



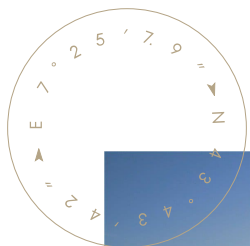
Brokerage

NAU  
YACHTS

DUKE

MOTOR YACHT    AZIMUT 31.39M    2010

(VAT paid)  
FLAG -



MOTOR YACHT

DUKE



[see more information about M/Y DUKE at www.nauyachts.com](http://www.nauyachts.com)

# SPECIFICATION

SHIPYARD, MODEL	Azimut 103S
BUILT	2010
LENGTH	31.39 m
WATERLINE LENGTH	N/A
HULL CONFIGURATION	PLANING
BEAM	7.1 m
RANGE	430
DRAFT	1.34 m
GROSS TONNAGE	110 GT
YACHT CLASS	N/A
CABINS	4+3
MASTER CABIN	LOWER DECK
GUESTS	10
BERTHS	10+6
CREW	6
HEADS	5+2

EXTERIOR DESIGN	STEFANO RIGHINI
INTERIOR DESIGN	GALEAZZI DESIGN
HULL	GRP
SUPERSTRUCTURE	GRP
ENGINES	2 x MTU 2430 h.p.
TYPE OF DRIVE	SHAFT LINE
ENGINE HOURS	N/A
MAXIMUM SPEED	34 kn
CRUISING SPEED	27 kn
FUEL CONSUMPTION AT ECONOMICAL SPEED	N/A
FUEL	12350 l
GREY WATER	N/A
BLACK WATER	N/A
FRESH WATER	N/A
DISPLACEMENT	N/A

[see more information about M/Y DUKE at www.nauyachts.com](http://www.nauyachts.com)





EXTERIOR AZIMUT 103S 2010 MY DUKE

M/Y DUKE





EXTERIOR AZIMUT 103S 2010 MY DUKE

M/Y DUKE





EXTERIOR AZIMUT 103S 2010 MY DUKE

M/Y DUKE





EXTERIOR AZIMUT 103S 2010 MY DUKE

M/Y DUKE





EXTERIOR AZIMUT 103S 2010 M/Y DUKE

M/Y DUKE





FLYBRIDGE

M/Y DUKE





FLYBRIDGE LOUNGE AREA

M/Y DUKE





BOW LOUNGE AREA

M/Y DUKE





COCKPIT SEATING AREA

M/Y DUKE





COCKPIT SEATING AREA

M/Y DUKE





COCKPIT SEATING AREA

M/Y DUKE





COCKPIT SEATING AREA

M/Y DUKE





COCKPIT SEATING AREA

M/Y DUKE





SWIMMING PLATFORM

M/Y DUKE





MAIN SALON

M/Y DUKE





MAIN HELM STATION

M/Y DUKE





MASTER CABIN

M/Y DUKE





VIP CABIN

M/Y DUKE





VIP CABIN

M/Y DUKE





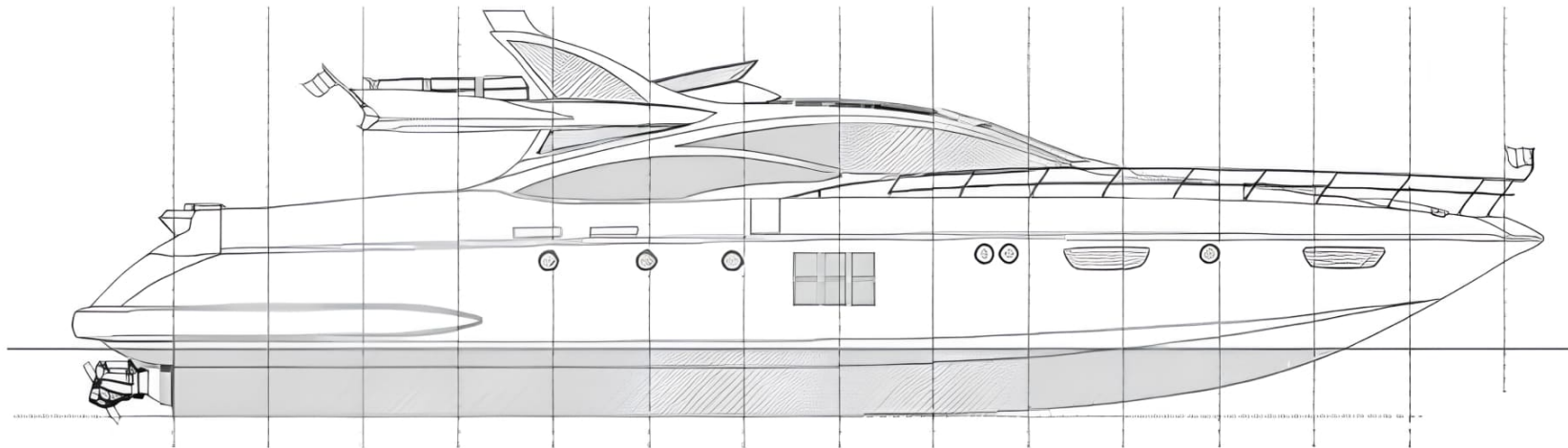
GUEST CABIN

M/Y DUKE



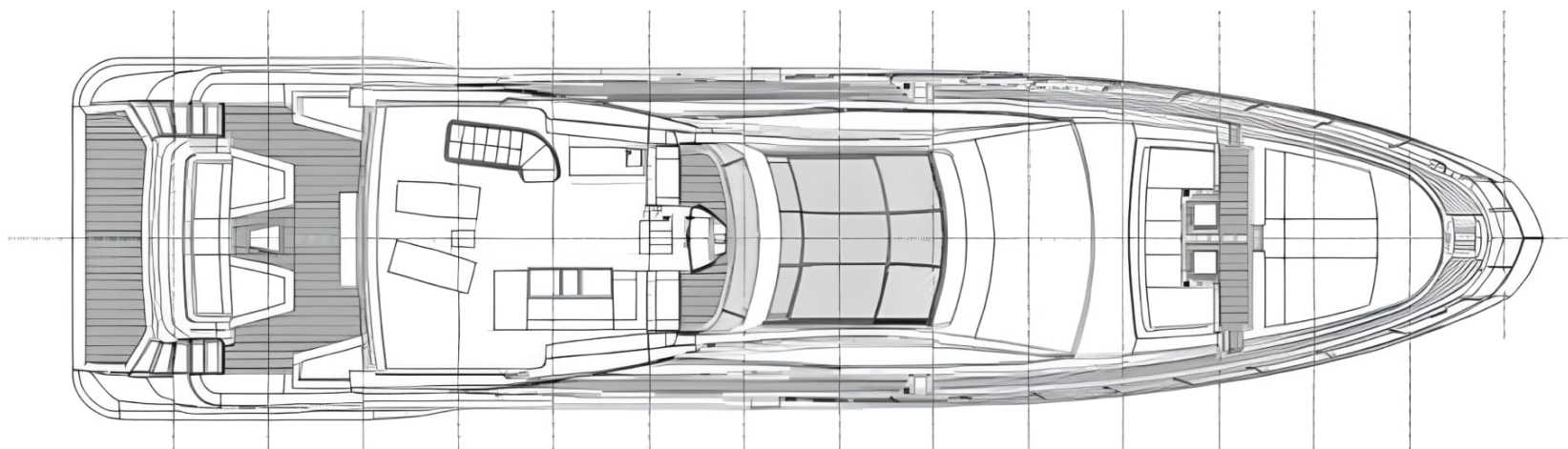
# General Arrangement





PROFILE





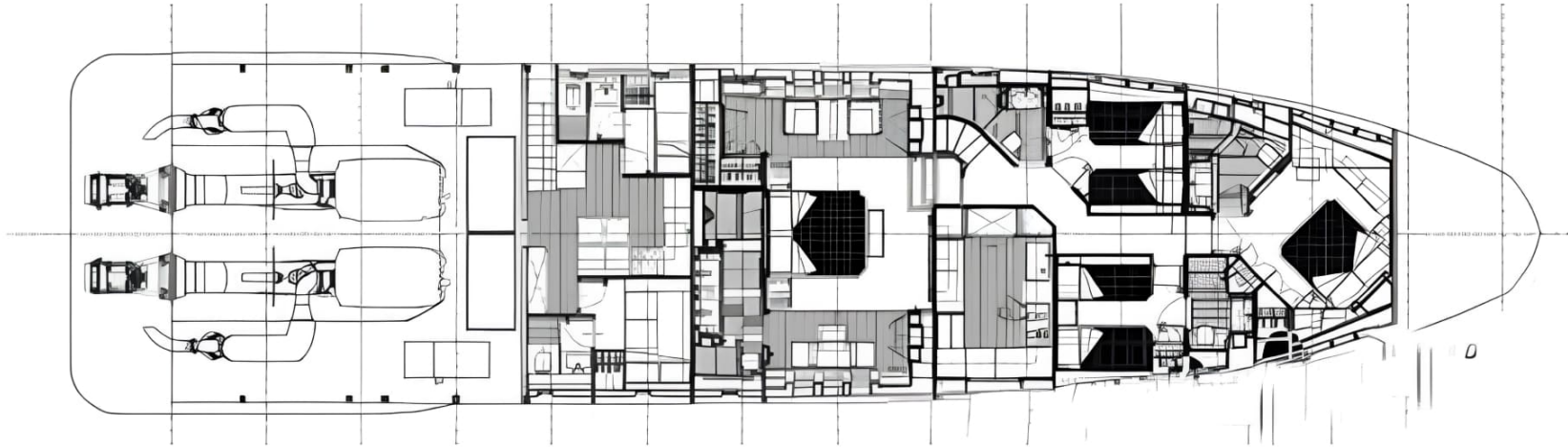
FLYBRIDGE





MAIN DECK





## LOWER DECK





KRISTINA KRAM

+377 678 63 33 13

Send e-mail

WhatsApp

Telegram

[More information about M/Y DUKE at www.nauyachts.com](http://www.nauyachts.com)