



Brokerage

**NAU**  
YACHTS

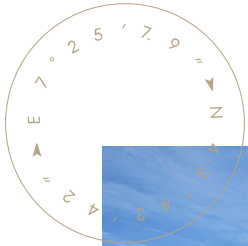
# GRAND CRU

MOTOR YACHT PRINCESS 22.35M 2014

€1,395,000 (VAT paid)  
FLAG - MALTA

MOTOR YACHT

## GRAND CRU



**GRAND CRU** is a **Princess 72** delivered in 2014 and extensively upgraded throughout her ownership. Combining the proven pedigree of one of Princess Yachts' most successful flybridge models with an enhanced technical specification, she offers an excellent platform for comfortable long-range cruising and extended time on board. Constructed with a GRP hull and superstructure, **GRAND CRU** benefits from the generous interior volume, practical layout and strong seakeeping characteristics that have made the **Princess 72** a benchmark in her class. What sets this particular yacht apart is a comprehensive upgrade programme that has significantly enhanced both onboard comfort and operational capability.

Among the key technical features are an **ABT Star 6X fin stabilisation system**, **hydraulic Slepner bow and stern thrusters**, increased generator capacity, a watermaker, shore power converter and an upgraded navigation package. Together, these systems improve autonomy, simplify operation and enhance comfort during extended cruising.

The stabilisation system significantly reduces motion both underway and at anchor, while the combination of hydraulic bow and stern thrusters provides precise manoeuvrability and increased confidence when docking or operating in confined marinas.

The interior has also benefited from a series of thoughtful upgrades. Enhancements include premium **Platinum leather upholstery**, updated carpeting, **Satin Light Oak** joinery and **Wenge** flooring. These refinements preserve the timeless character of the Princess design while introducing a more contemporary and sophisticated atmosphere throughout the living spaces.

**GRAND CRU** is offered together with a **Williams 385 Turbojet** tender and a wide range of additional upgrades designed to improve comfort, reliability and ease of operation. The result is a highly specified **Princess 72** that combines a proven platform with a level of equipment and refinement rarely found within this size category.

[see more information about M/Y GRAND CRU at www.nauyachts.com](http://www.nauyachts.com)

# SPECIFICATION

SHIPYARD, MODEL	Princess Y72
BUILT	2014
LENGTH	22.35 m
WATERLINE LENGTH	18.93 m
HULL CONFIGURATION	PLANING
BEAM	5.49 m
RANGE	700
DRAFT	1.68 m
GROSS TONNAGE	49 GT
YACHT CLASS	CE
CABINS	4+2
MASTER CABIN	LOWER DECK
GUESTS	8
BERTHS	8+3
CREW	3
HEADS	3+1

EXTERIOR DESIGN	BERNARD OLESINSKI
INTERIOR DESIGN	PRINCESS YACHTS
HULL	GRP
SUPERSTRUCTURE	GRP
ENGINES	2 x CAT C32 Acert 1622 h.p.
TYPE OF DRIVE	SHAFT LINE
ENGINE HOURS	2300 h
MAXIMUM SPEED	32 kn
CRUSING SPEED	28 kn
FUEL CONSUMPTION AT ECONOMICAL SPEED	~ 500 l/h
FUEL	4500 l
GREY WATER	400 l
BLACK WATER	400 l
FRESH WATER	836 l
DISPLACEMENT	52

[see more information about M/Y GRAND CRU at www.nauyachts.com](http://www.nauyachts.com)



EXTERIOR PRINCESS Y72 2014 MY GRAND  
CRU

M/Y GRAND CRU



COCKPIT DINING AREA

M/Y GRAND CRU



COCKPIT DINING AREA

M/Y GRAND CRU



FLYBRIDGE DINING AREA

M/Y GRAND CRU



FLYBRIDGE LOUNGE AREA

M/Y GRAND CRU



FLYBRIDGE GRILL

M/Y GRAND CRU



BOW LOUNGE AREA

M/Y GRAND CRU





MAIN SALON LOUNGE AREA

M/Y GRAND CRU



MAIN SALON LOUNGE AREA

M/Y GRAND CRU



MAIN SALON DINING AREA

M/Y GRAND CRU



MAIN HELM STATION

M/Y GRAND CRU



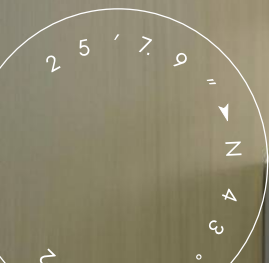
VIP CABIN

M/Y GRAND CRU



VIP CABIN

M/Y GRAND CRU



VIP CABIN

M/Y GRAND CRU



VIP CABIN

M/Y GRAND CRU



VIP CABIN

M/Y GRAND CRU



VIP CABIN

M/Y GRAND CRU



MASTER CABIN

M/Y GRAND CRU



MASTER CABIN

M/Y GRAND CRU



MAKE-UP TABLE IN MASTER CABIN

M/Y GRAND CRU



MASTER CABIN LOUNGE AREA

M/Y GRAND CRU



MASTER BATHROOM

M/Y GRAND CRU



GUEST CABIN

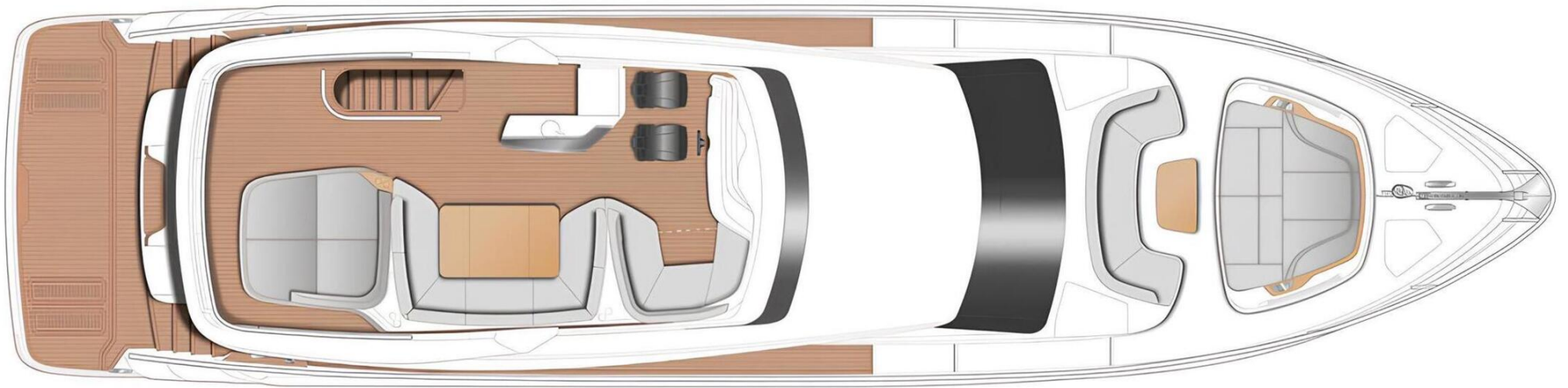
M/Y GRAND CRU



GUEST BATHROOM

M/Y GRAND CRU

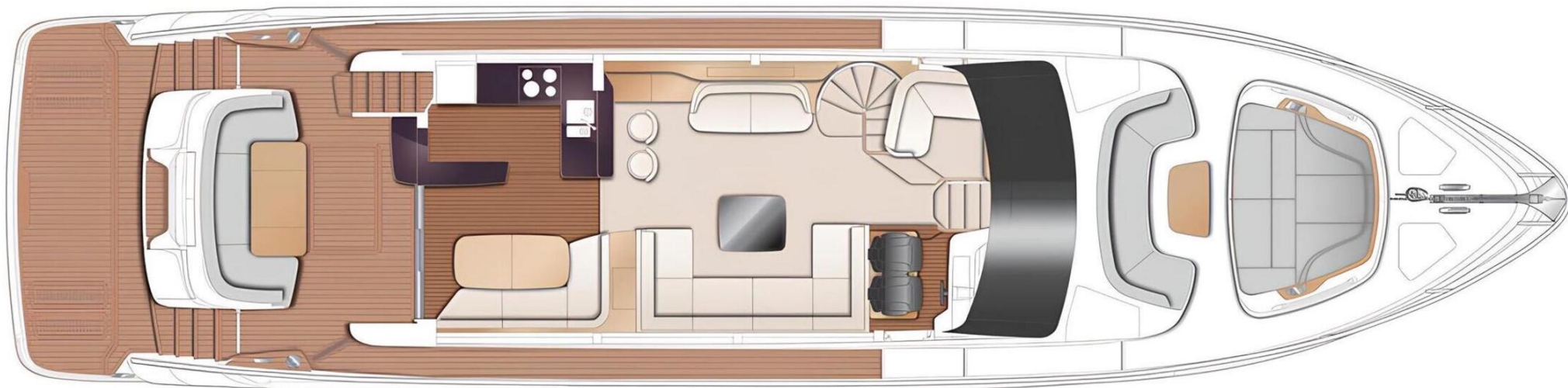
# General Arrangement



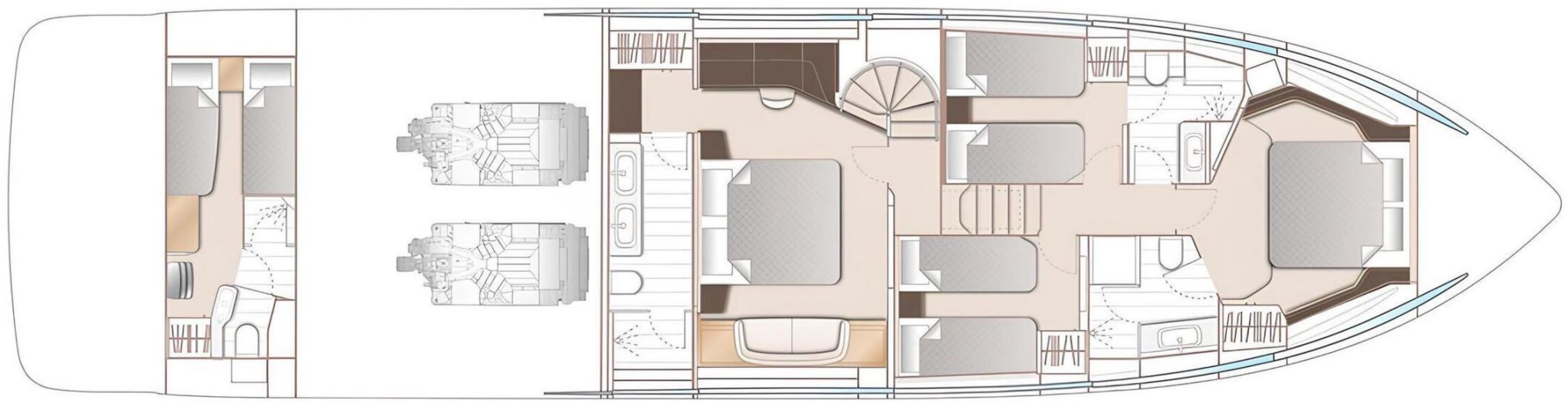
---

---

FLYBRIDGE



-----  
-----  
-----  
MAIN DECK



LOWER DECK



KIRILL KUATOV

+377 607 93 15 20

+39 333 576 44 44

[Send e-mail](#)

[WhatsApp](#)

[Telegram](#)