



Brokerage

NAU
YACHTS

KING BENJI

MOTOR YACHT CUSTOM BUILT 46.94M 2024

€26,499,000

FLAG - MARSHALL ISLANDS

MOTOR YACHT

KING BENJI



KING BENJI is a 46.94-metre explorer yacht delivered by **Dunya Yachts** in 2024 to a design by Gregory C. Marshall. Built with a steel hull and aluminium superstructure, she combines true long-range cruising capability with an exceptional level of comfort and a highly original approach to onboard living.

Since her launch, **KING BENJI** has received widespread recognition within the yachting industry. She appeared on the cover of *BOAT International* in 2024 and was subsequently awarded Best Interior Design in the category for yachts over 40 metres and under 499 GT at the 2025 *BOAT International Design & Innovation Awards*.

The yacht was conceived as a contemporary evolution of the renowned explorer yacht *Big Fish*, with a strong emphasis on outdoor living, long-range exploration and creating a closer connection between guests and the surrounding environment. Rather than focusing solely on interior volume, the design prioritises experience, versatility and access to the sea.

One of **KING BENJI**'s defining features is her entirely private owner's deck. This exclusive space includes a full-beam master suite with a California king bed, floor-to-ceiling glazing, private terraces and an outdoor shower. Forward, guests can enjoy Japanese-inspired hot and cold plunge pools positioned at the bow, offering uninterrupted views and a unique wellness experience rarely found aboard a yacht of this size.

Guest accommodation is arranged in spacious cabins complemented by interiors designed by Design Unlimited. Natural wood, leather, bamboo and carefully selected textures create a warm and inviting atmosphere that feels equally suited to adventure cruising and extended stays on board.

At the heart of the yacht's social life is an open-air teppanyaki bar with panoramic views, designed as a central gathering point for guests. In total, **KING BENJI** offers ten separate outdoor dining and lounge areas, including a crow's nest with 360-degree views, multiple deck lounges and a variety of al fresco dining spaces spread throughout the yacht.

The aft deck serves as both a relaxation area and an adventure hub. Equipped with a 10-tonne crane, it is capable of carrying a 12-metre Nor-Tech tender along with an extensive collection of water toys and expedition equipment. The inventory includes jet skis, eFoils, Seabobs, diving and sportfishing gear, inflatable platforms, a waterslide and numerous additional toys designed to support active cruising and exploration.

Combining true explorer-yacht capability, award-winning design, highly original guest spaces and an extensive range of adventure equipment, **KING BENJI** offers a distinctive yachting experience focused on exploration, outdoor living and long-range cruising in some of the world's most remote and rewarding destinations.

[see more information about M/Y KING BENJI at www.nauyachts.com](http://www.nauyachts.com)

SPECIFICATION

SHIPYARD, MODEL	Custom Built 47M
BUILT	2024
LENGTH	46.94 m
WATERLINE LENGTH	41.4 m
HULL CONFIGURATION	DISPLACEMENT
BEAM	9.14 m
RANGE	4000
DRAFT	3.05 m
GROSS TONNAGE	491 GT
YACHT CLASS	AMERICAN BUREAU OF SHIPPING
CABINS	5+5
MASTER CABIN	UPPER DECK
GUESTS	10
BERTHS	10+9
CREW	9
HEADS	6+5

EXTERIOR DESIGN	GREGORY C MARSHALL
INTERIOR DESIGN	DESIGN UNLIMITED
HULL	STEEL
SUPERSTRUCTURE	ALUMINIUM
ENGINES	2 x CAT C32 Acert 1218 h.p.
TYPE OF DRIVE	SHAFT LINE
ENGINE HOURS	2474 h
MAXIMUM SPEED	14 kn
CRUSING SPEED	12 kn
FUEL CONSUMPTION AT ECONOMICAL SPEED	~ 226 l/h
FUEL	67200 l
GREY WATER	N/A
BLACK WATER	N/A
FRESH WATER	16800 l
DISPLACEMENT	528

[see more information about M/Y KING BENJI at www.nauyachts.com](http://www.nauyachts.com)



EXTERIOR DUNYA YACHTS 47M 2024 MY KING BENJI

M/Y KING BENJI



EXTERIOR DUNYA YACHTS 47M 2024 MY KING BENJI

M/Y KING BENJI



EXTERIOR DUNYA YACHTS 47M 2024 MY KING
BENJI

M/Y KING BENJI



EXTERIOR DUNYA YACHTS 47M 2024 MY KING BENJI

M/Y KING BENJI



SWIMMING PLATFORM AND WATER TOYS

M/Y KING BENJI



SWIMMING PLATFORM AND WATER TOYS

M/Y KING BENJI



TENDER

M/Y KING BENJI



SWIMMING PLATFORM AND WATER TOYS

M/Y KING BENJI



SWIMMING PLATFORM AND WATER TOYS

M/Y KING BENJI



SWIMMING PLATFORM AND WATER TOYS

M/Y KING BENJI



SWIMMING PLATFORM AND WATER TOYS

M/Y KING BENJI



AFT MAIN DECK LOUNGE AREA

M/Y KING BENJI



AFT MAIN DECK LOUNGE AREA

M/Y KING BENJI



AFT MAIN DECK DINING AREA

M/Y KING BENJI



AFT UPPER DECK LOUNGE AREA

M/Y KING BENJI



AFT UPPER DECK LOUNGE AREA

M/Y KING BENJI



AFT UPPER DECK LOUNGE AREA

M/Y KING BENJI



BRIDGEDECK DINING AREA

M/Y KING BENJI



BRIDGEDECK DINING AREA

M/Y KING BENJI



AFT BRIDGEDECK LOUNGE AREA

M/Y KING BENJI



AFT BRIDGEDECK LOUNGE AREA

M/Y KING BENJI



BOW LOUNGE AREA

M/Y KING BENJI



BOW LOUNGE AREA

M/Y KING BENJI



BOW LOUNGE AREA

M/Y KING BENJI



BOW LOUNGE AREA

M/Y KING BENJI



SUNDECK LOUNGE AREA

M/Y KING BENJI



SUNDECK LOUNGE AREA

M/Y KING BENJI



MAIN HELM STATION

M/Y KING BENJI



MAIN HELM STATION

M/Y KING BENJI



UPPER DECK SALOON

M/Y KING BENJI



UPPER DECK SALOON

M/Y KING BENJI



UPPER DECK SALOON

M/Y KING BENJI



UPPER DECK SALOON

M/Y KING BENJI



UPPER DECK SALOON

M/Y KING BENJI



UPPER DECK SALOON

M/Y KING BENJI



MASTER BATHROOM

M/Y KING BENJI



MASTER BATHROOM

M/Y KING BENJI



MASTER CABIN

M/Y KING BENJI



MASTER CABIN

M/Y KING BENJI



MASTER CABIN

M/Y KING BENJI



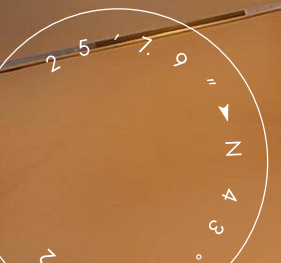
GALLEY

M/Y KING BENJI



GALLEY

M/Y KING BENJI



GALLEY

M/Y KING BENJI



GALLEY

M/Y KING BENJI



GALLEY

M/Y KING BENJI



GALLEY

M/Y KING BENJI



GALLEY

M/Y KING BENJI



MAIN SALON LOUNGE AREA

M/Y KING BENJI



MAIN SALON LOUNGE AREA

M/Y KING BENJI



MAIN SALON LOUNGE AREA

M/Y KING BENJI



MAIN SALON LOUNGE AREA

M/Y KING BENJI



MAIN SALON DINING AREA

M/Y KING BENJI



MAIN SALON DINING AREA

M/Y KING BENJI



GUEST CABIN

M/Y KING BENJI



GUEST CABIN

M/Y KING BENJI



GUEST CABIN

M/Y KING BENJI



GUEST BATHROOM

M/Y KING BENJI



VIP BATHROOM

M/Y KING BENJI



VIP CABIN

M/Y KING BENJI



VIP CABIN

M/Y KING BENJI



VIP CABIN

M/Y KING BENJI



VIP BATHROOM

M/Y KING BENJI



VIP CABIN

M/Y KING BENJI



VIP BATHROOM

M/Y KING BENJI



VIP CABIN

M/Y KING BENJI



VIP CABIN

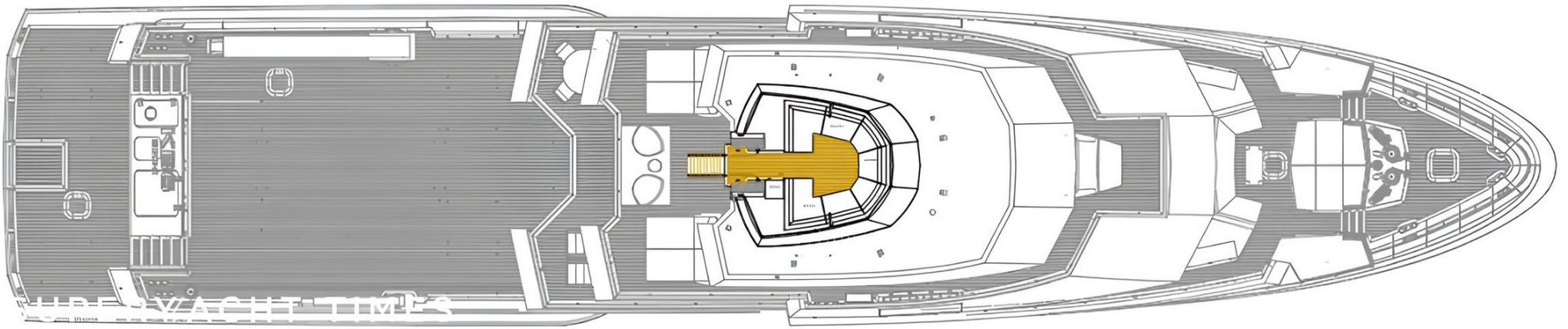
M/Y KING BENJI



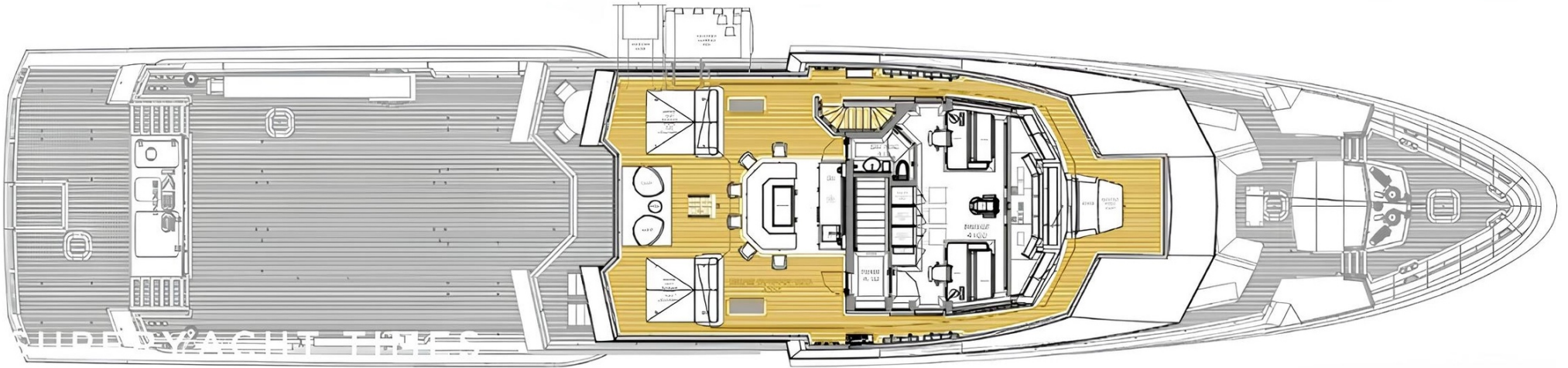
VIP CABIN

M/Y KING BENJI

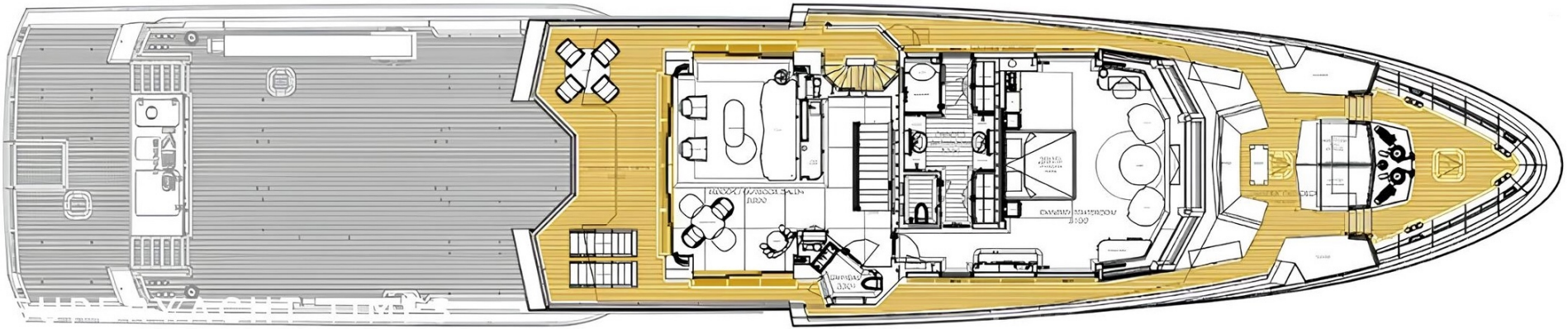
General Arrangement



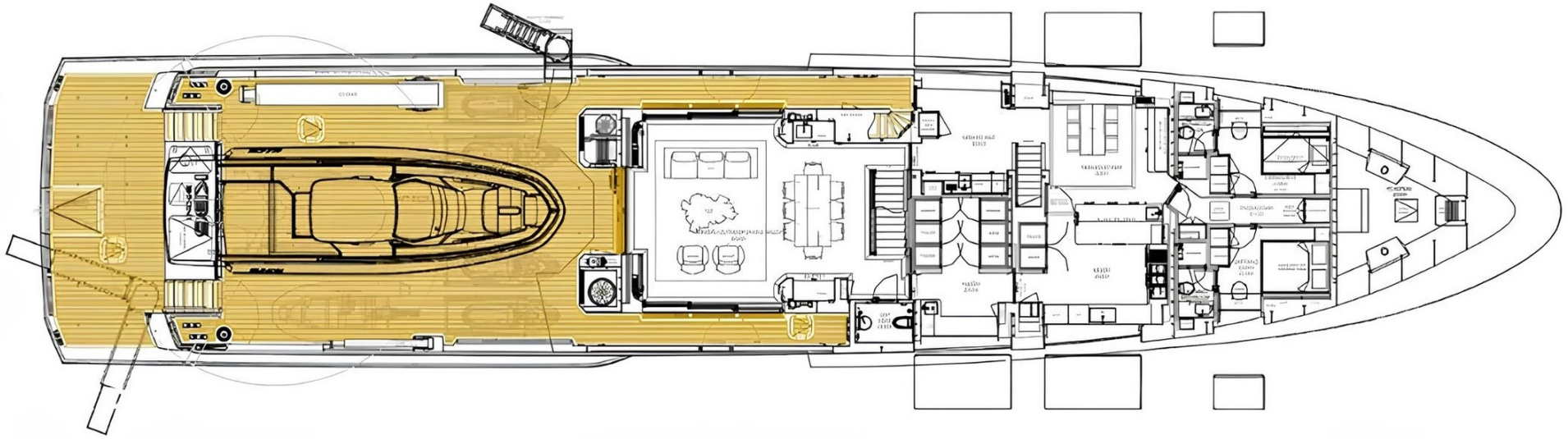
SUNDECK



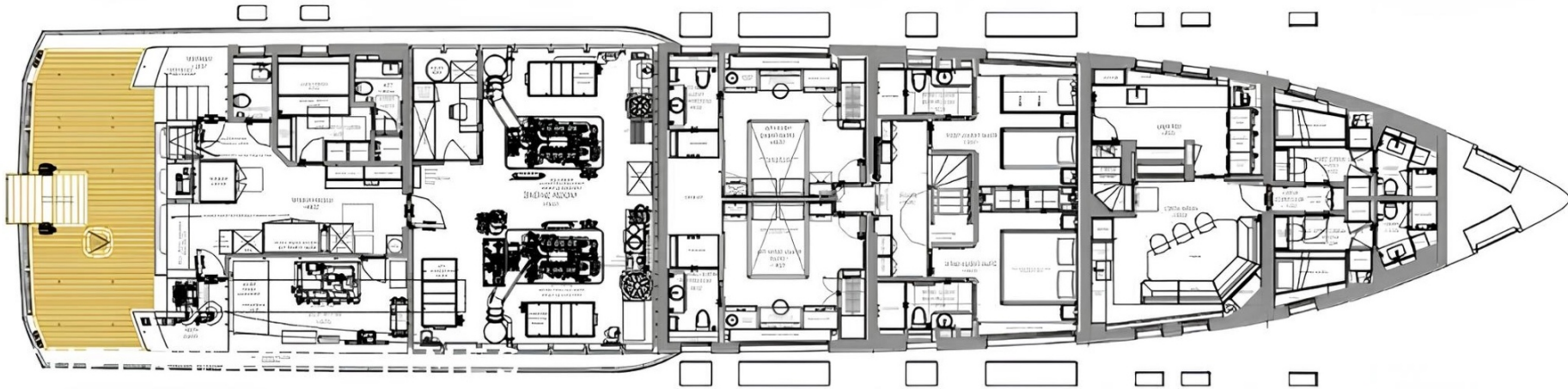
BRIDGE DECK



UPPER DECK



MAIN DECK



LOWER DECK



KIRILL KUATOV

+377 607 93 15 20

+39 333 576 44 44

[Send e-mail](#)

[WhatsApp](#)

[Telegram](#)

[More information about M/Y KING BENJI at www.nauyachts.com](http://www.nauyachts.com)

[Watch video](#)