



Brokerage

NAU
YACHTS

ANA

MOTOR YACHT AZIMUT 26.78M 2018

€5,200,000 (VAT paid)
FLAG - SAINT KITTS AND
NEVIS

MOTOR YACHT

ANA



ANA is a 26.78-metre **Azimut Grande 27 Metri** motor yacht built in 2018. She combines contemporary Italian styling by Stefano Righini, interiors by Achille Salvagni Architetti, and a rare five-cabin layout for this size category. A refit completed in 2025 has helped maintain the yacht in excellent condition.

Accommodation is arranged for up to 10 guests across 5 cabins. The owner's suite is positioned on the main deck and features large panoramic windows, a walk-in wardrobe, and a spacious bathroom. On the lower deck are a VIP cabin, one double cabin, and two twin cabins.

The interior is finished in a calm contemporary Italian style, with lacquered surfaces, walnut parquet flooring, natural fabrics, and large windows that make the saloon feel bright and open. The main deck combines lounge areas with a dining space for eight guests.

Outdoor living plays an important role in the yacht's layout. The flybridge is equipped with a dining area, bar, refrigerator, BBQ, and sunbathing spaces. Forward, the bow offers a separate lounge area with sun pads, while the aft cockpit connects directly to the saloon through large sliding glass doors.

ANA is powered by twin MAN V12 engines rated at 1,900 hp each. Cruising speed is approximately 24 knots, with a maximum speed of up to 28 knots. CMC zero-speed stabilisers provide comfort both underway and at anchor.

Technical equipment includes SIMRAD navigation systems, Cummins Onan generators, a Condaria air-conditioning system, a BOSE audio system, and a Williams 365 tender.

Overall, **ANA** is a balanced and versatile **Azimut Grande 27M**, combining a contemporary interior, strong performance, a rare five-cabin layout, and a comfortable format for private cruising or Mediterranean charter use.

[see more information about M/Y ANA at www.nauyachts.com](http://www.nauyachts.com)

SPECIFICATION

SHIPYARD, MODEL	Azimut Grande 27M
BUILT	2018
LENGTH	26.78 m
WATERLINE LENGTH	22.62 m
HULL CONFIGURATION	PLANING
BEAM	6.59 m
RANGE	360
DRAFT	1.93 m
GROSS TONNAGE	140 GT
YACHT CLASS	RINA
CABINS	5+2
MASTER CABIN	MAIN DECK
GUESTS	10
BERTHS	10+3
CREW	3
HEADS	6+1

EXTERIOR DESIGN	STEFANO RIGHINI DESIGN
INTERIOR DESIGN	ACHILLE SALVAGNI ARCHITETTI
HULL	GRP
SUPERSTRUCTURE	GRP
ENGINES	2 x MAN V12 1900 h.p.
TYPE OF DRIVE	SHAFT LINE
ENGINE HOURS	593 h
MAXIMUM SPEED	28 kn
CRUSING SPEED	24 kn
FUEL CONSUMPTION AT ECONOMICAL SPEED	N/A
FUEL	9500 l
GREY WATER	850 l
BLACK WATER	850 l
FRESH WATER	2000 l
DISPLACEMENT	92.96

[see more information about M/Y ANA at www.nauyachts.com](http://www.nauyachts.com)



EXTERIOR AZIMUT GRANDE 27 METRI 2018 MY
ANA

M/Y ANA



EXTERIOR AZIMUT GRANDE 27 METRI 2018 MY
ANA

M/Y ANA



EXTERIOR AZIMUT GRANDE 27 METRI 2018 MY
ANA

M/Y ANA



EXTERIOR AZIMUT GRANDE 27 METRI 2018 MY
ANA

M/Y ANA



EXTERIOR AZIMUT GRANDE 27 METRI 2018 MY
ANA

M/Y ANA



EXTERIOR AZIMUT GRANDE 27 METRI 2018 MY
ANA

M/Y ANA



SWIMMING PLATFORM

M/Y ANA



COCKPIT DINING AREA

M/Y ANA



FLYBRIDGE LOUNGE AREA

M/Y ANA



FLYBRIDGE DINING AREA

M/Y ANA



FLYBRIDGE LOUNGE AREA

M/Y ANA



BOW LOUNGE AREA

M/Y ANA



MAIN SALON LOUNGE AREA

M/Y ANA



MAIN SALON LOUNGE AREA

M/Y ANA



MAIN SALON DINING AREA

M/Y ANA



MAIN SALON DINING AREA

M/Y ANA



MAIN SALON DINING AREA

M/Y ANA



GALLEY

M/Y ANA



MASTER CABIN

M/Y ANA



MASTER CABIN

M/Y ANA



MASTER BATHROOM

M/Y ANA



MASTER BATHROOM

M/Y ANA



GUEST CABIN

M/Y ANA



GUEST CABIN

M/Y ANA



GUEST CABIN

M/Y ANA



GUEST BATHROOM

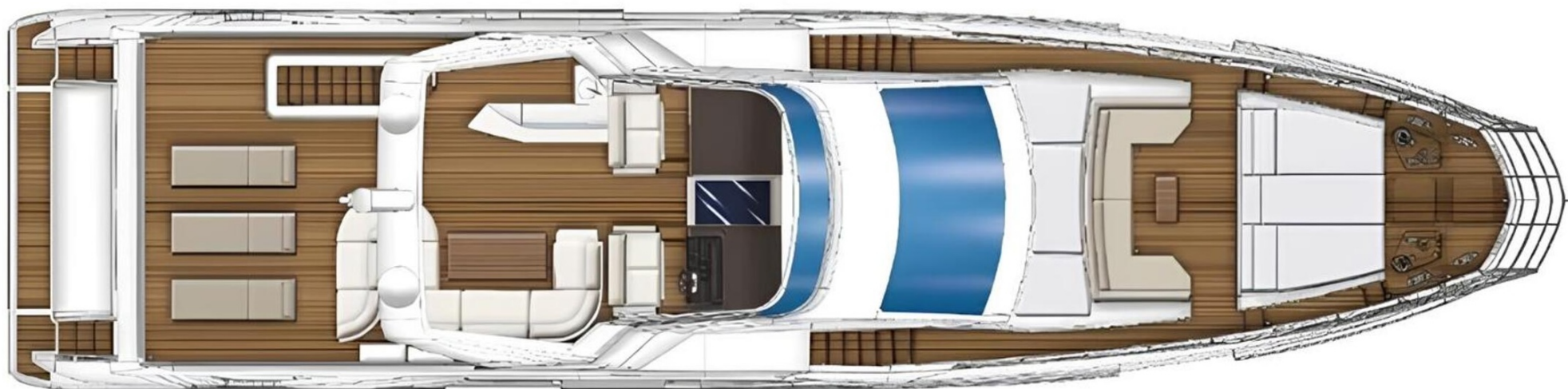
M/Y ANA



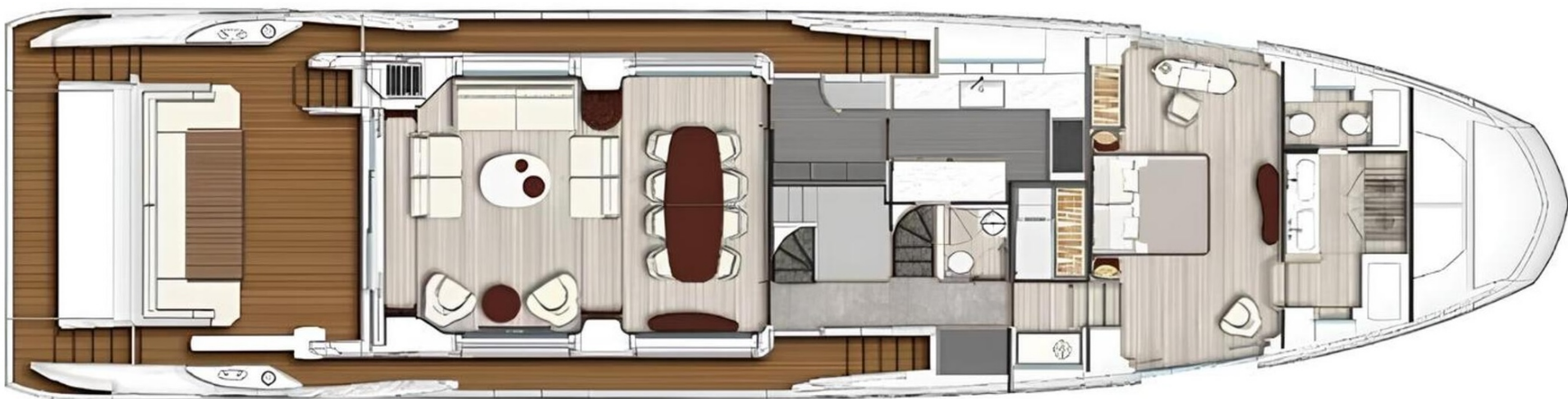
VIP CABIN

M/Y ANA

General Arrangement



FLYBRIDGE



MAIN DECK



LOWER DECK



KIRILL KUATOV

+377 607 93 15 20

+39 333 576 44 44

[Send e-mail](#)

[WhatsApp](#)

[Telegram](#)

[More information about M/Y ANA at www.nauyachts.com](http://www.nauyachts.com)

[Watch video](#)