



Brokerage

NAU  
YACHTS

TNT LEISURE

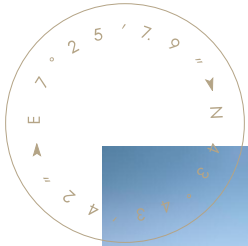
MOTOR YACHT SANLORENZO 26.76M 2019

€4,480,000  
FLAG -



MOTOR YACHT

## TNT LEISURE



The motor yacht **TNT LEISURE**, built by **Sanlorenzo** in 2019, is part of the **SL86** series - a planing yacht measuring 26.76 meters in length, with a beam of 6.35 meters and a gross tonnage of approximately 90 GT. Constructed with a GRP hull and superstructure, she offers an optimal balance of strength, weight, and efficiency. She is powered by twin MTU diesel engines, each delivering 1,947 hp, enabling a top speed of up to 32 knots and a cruising speed of around 26 knots. For enhanced comfort, **TNT LEISURE** is equipped with electric stabilizers by CMC Marine. The layout accommodates up to eight guests across four cabins. The full-beam master suite is located amidships on the lower deck and features large hull windows for natural light. Additional guest cabins are designed for comfortable family or group use. A crew of three is housed in separate quarters, ensuring professional service and guest privacy. The main saloon follows an open-plan design, filled with natural light thanks to floor-to-ceiling panoramic glazing and lowered bulwarks. Interior finishes include Canaletto walnut panels and a glass staircase that enhances the sense of space. The flybridge - one of the largest in her class - features a sliding hardtop with adjustable louvers, allowing precise control of light over the dining and bar areas. The foredeck offers a sunbathing lounge, while the aft deck is arranged for alfresco dining. Maintained in good technical condition and fully ready for operation, **TNT LEISURE** combines high performance, contemporary design, and a functional layout, making her equally suitable for private use or charter operations.

[see more information about M/Y TNT LEISURE at www.nauyachts.com](http://www.nauyachts.com)

# SPECIFICATION

SHIPYARD, MODEL	Sanlorenzo SL86
BUILT	2019
LENGTH	26.76 m
WATERLINE LENGTH	21.34 m
HULL CONFIGURATION	PLANING
BEAM	6.35 m
RANGE	355
DRAFT	1.9 m
GROSS TONNAGE	90 GT
YACHT CLASS	RINA
CABINS	4+2
MASTER CABIN	LOWER DECK
GUESTS	8
BERTHS	8+3
CREW	3
HEADS	5+1

EXTERIOR DESIGN	OFFICINA ITALIANA DESIGN
INTERIOR DESIGN	OFFICINA ITALIANA DESIGN
HULL	GRP
SUPERSTRUCTURE	GRP
ENGINES	2 x MTU 12V 2000 M96L 1849 h.p.
TYPE OF DRIVE	SHAFT LINE
ENGINE HOURS	N/A
MAXIMUM SPEED	32 kn
CRUSING SPEED	26 kn
FUEL CONSUMPTION AT ECONOMICAL SPEED	~ 529 l/h
FUEL	8000 l
GREY WATER	400 l
BLACK WATER	400 l
FRESH WATER	1700 l
DISPLACEMENT	82

[see more information about M/Y TNT LEISURE at www.nauyachts.com](http://www.nauyachts.com)





EXTERIOR SANLORENZO SL86 2019 MY TNT  
LEISURE

M/Y TNT LEISURE





FLYBRIDGE DINING AREA

M/Y TNT LEISURE





FLYBRIDGE DINING AREA

M/Y TNT LEISURE





FLYBRIDGE GRILL

M/Y TNT LEISURE



BOW LOUNGE AREA

M/Y TNT LEISURE





COCKPIT SEATING AREA

M/Y TNT LEISURE





SWIMMING PLATFORM AND WATER TOYS

M/Y TNT LEISURE





SWIMMING PLATFORM AND WATER TOYS

M/Y TNT LEISURE





MAIN SALON DINING AREA

M/Y TNT LEISURE





MAIN HELM STATION

M/Y TNT LEISURE





GALLEY

M/Y TNT LEISURE





MASTER CABIN

M/Y TNT LEISURE





MASTER CABIN

M/Y TNT LEISURE





MASTER CABIN

M/Y TNT LEISURE





MASTER CABIN

M/Y TNT LEISURE





MASTER BATHROOM

M/Y TNT LEISURE

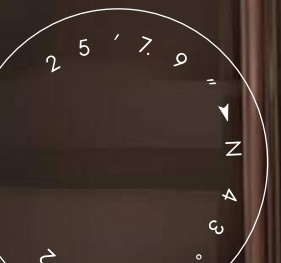




# MASTER BATHROOM

M/Y TNT LEISURE





MASTER BATHROOM

M/Y TNT LEISURE





VIP CABIN

M/Y TNT LEISURE





VIP CABIN

M/Y TNT LEISURE





VIP BATHROOM

M/Y TNT LEISURE

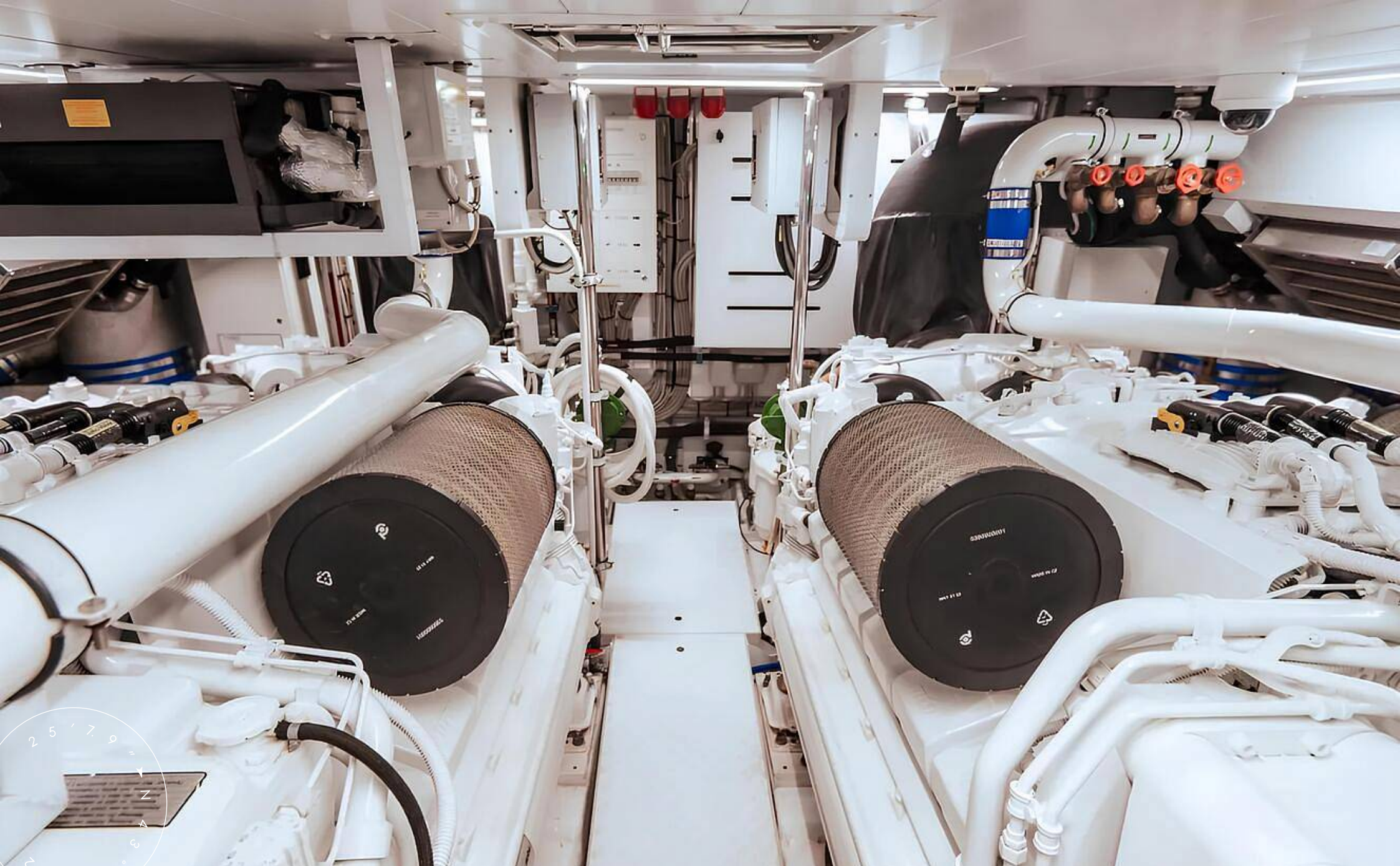




VIP CABIN

M/Y TNT LEISURE





ENGINE ROOM

M/Y TNT LEISURE

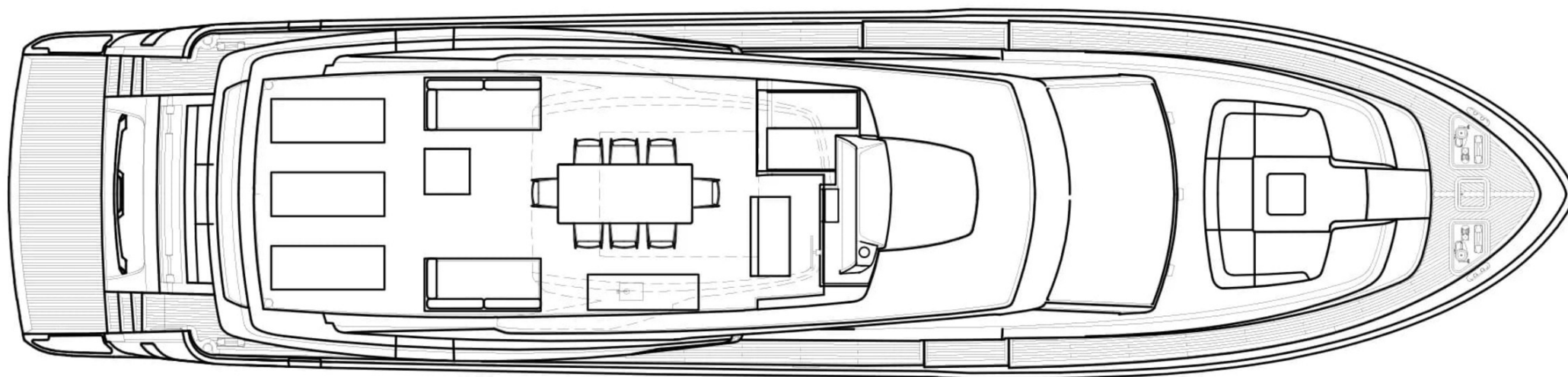


# General Arrangement



PROFILE

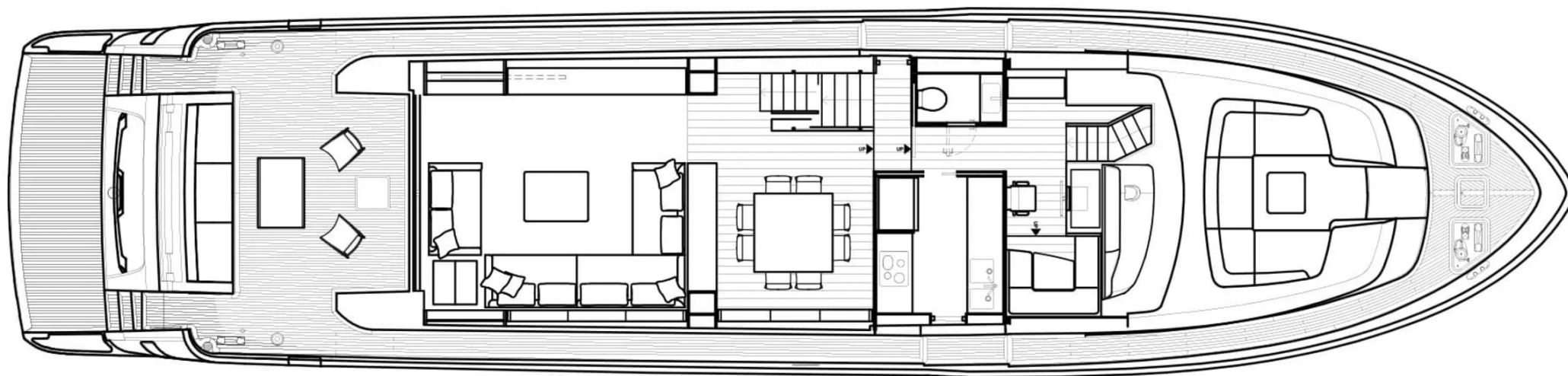




---

---

FLYBRIDGE

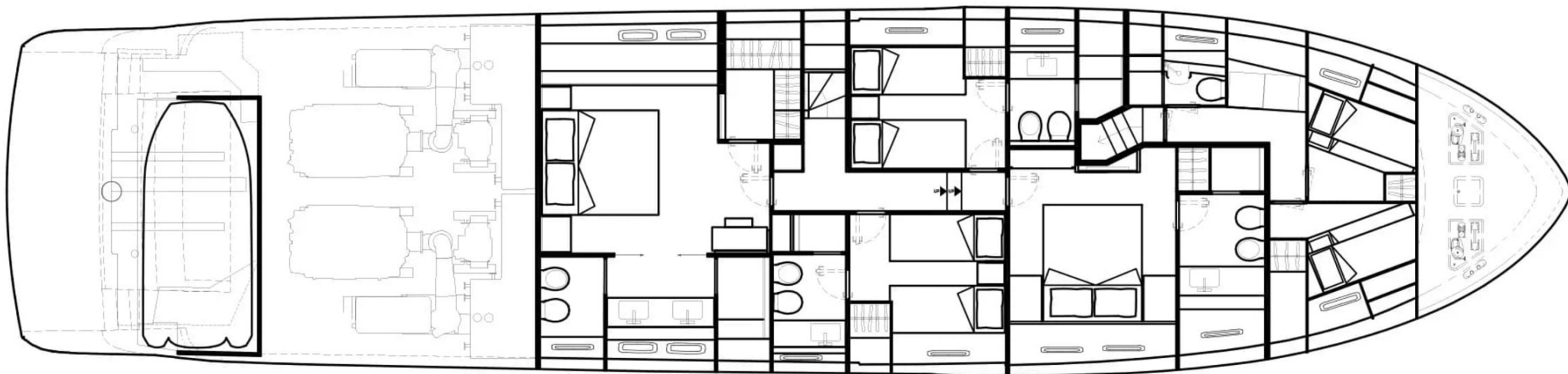


---

---

## MAIN DECK





---

---

LOWER DECK



KIRILL KUATOV

+377 607 93 15 20

+39 333 576 44 44

[Send e-mail](#)

[WhatsApp](#)

[Telegram](#)