



New Build

NAU
YACHTS

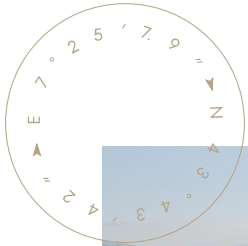
TELL NO ONE

MOTOR YACHT SANLORENZO 26.6M 2026

€7,850,000
FLAG -

MOTOR YACHT

TELL NO ONE



The motor yacht **TELL NO ONE Sanlorenzo SL86 Asymmetric**, launched in 2026 by **Sanlorenzo**, is a modern 26-meter vessel that further develops the shipyard's signature asymmetric concept, offering a new approach to onboard space utilization. A defining feature of the design is the elimination of the port-side walkway, allowing for increased interior volume and the creation of a bright, open-plan main deck. The layout seamlessly connects the aft lounge area with the forward dining space, forming a unified living environment.

An additional engineering highlight is the concealed aft staircase, integrated behind a прозрачная panel and deployable when needed. This solution provides easy access to the water without disrupting the yacht's clean exterior lines. The aft section features a beach club at water level and a garage designed to accommodate a Williams tender and a jet ski. Outdoor areas are arranged for relaxation and socializing, with sunbathing zones on the foredeck and a flybridge ideal for alfresco dining and panoramic lounge areas.

The layout accommodates up to eight guests across four cabins on the lower deck, including a full-beam master suite and three additional en-suite guest cabins. Crew quarters are located forward in two cabins, ensuring privacy for guest areas. The interior follows the Arcaica design concept, emphasizing natural materials such as wood, stone, marble, and natural-fiber textiles.

Built to RINA Class A standards, the yacht incorporates engineering solutions focused on energy efficiency and the use of advanced materials.

TELL NO ONE combines innovative layout solutions, refined architecture, and strong performance, delivering a contemporary 26-meter yachting experience with a focus on space, comfort, and functionality.

[see more information about M/Y TELL NO ONE at www.nauyachts.com](http://www.nauyachts.com)

SPECIFICATION

SHIPYARD, MODEL	Sanlorenzo SL86 Asymmetric
BUILT	2026
LENGTH	26.6 m
WATERLINE LENGTH	21.34 m
HULL CONFIGURATION	PLANING
BEAM	6.53 m
RANGE	500
DRAFT	1.8 m
GROSS TONNAGE	92 GT
YACHT CLASS	CE
CABINS	4+2
MASTER CABIN	LOWER DECK
GUESTS	8
BERTHS	8+3
CREW	3
HEADS	5+1

EXTERIOR DESIGN	ZUCCON INTERNATIONAL PROJECT
INTERIOR DESIGN	ZUCCON INTERNATIONAL PROJECT
HULL	GRP
SUPERSTRUCTURE	GRP
ENGINES	2 x MAN 2000 h.p.
TYPE OF DRIVE	SHAFT LINE
ENGINE HOURS	N/A
MAXIMUM SPEED	29 kn
CRUSING SPEED	25 kn
FUEL CONSUMPTION AT ECONOMICAL SPEED	~ 550 l/h
FUEL	8000 l
GREY WATER	400 l
BLACK WATER	400 l
FRESH WATER	1700 l
DISPLACEMENT	90

[see more information about M/Y TELL NO ONE at www.nauyachts.com](http://www.nauyachts.com)



EXTERIOR SANLORENZO SL86 ASYMMETRIC
2026 MY TELL NO ONE

M/Y TELL NO ONE



EXTERIOR SANLORENZO SL86 ASYMMETRIC
2026 MY TELL NO ONE

M/Y TELL NO ONE



EXTERIOR SANLORENZO SL86 ASYMMETRIC
2026 M/Y TELL NO ONE

M/Y TELL NO ONE



EXTERIOR SANLORENZO SL86 ASYMMETRIC
2026 MY TELL NO ONE

M/Y TELL NO ONE



EXTERIOR SANLORENZO SL86 ASYMMETRIC
2026 MY TELL NO ONE

M/Y TELL NO ONE



FLYBRIDGE LOUNGE AREA

M/Y TELL NO ONE



MAIN SALON LOUNGE AREA

M/Y TELL NO ONE



MAIN SALON LOUNGE AREA

M/Y TELL NO ONE



MAIN SALON LOUNGE AREA

M/Y TELL NO ONE



MAIN SALON LOUNGE AREA

M/Y TELL NO ONE



MAIN SALON LOUNGE AREA

M/Y TELL NO ONE



MAIN SALON LOUNGE AREA

M/Y TELL NO ONE



MAIN SALON LOUNGE AREA

M/Y TELL NO ONE



MASTER CABIN

M/Y TELL NO ONE



MASTER CABIN

M/Y TELL NO ONE



MASTER BATHROOM

M/Y TELL NO ONE



VIP CABIN

M/Y TELL NO ONE



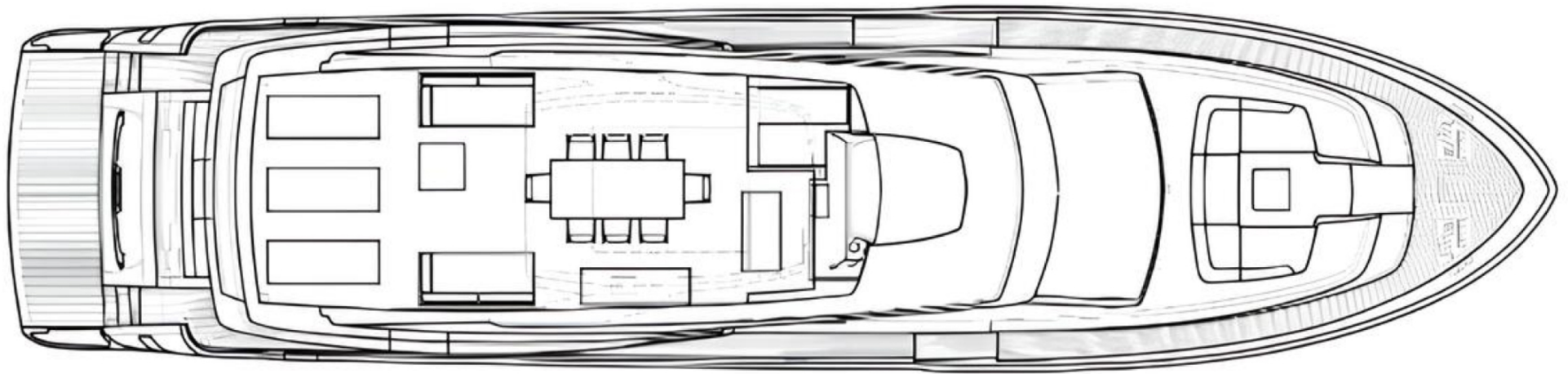
GUEST CABIN

M/Y TELL NO ONE

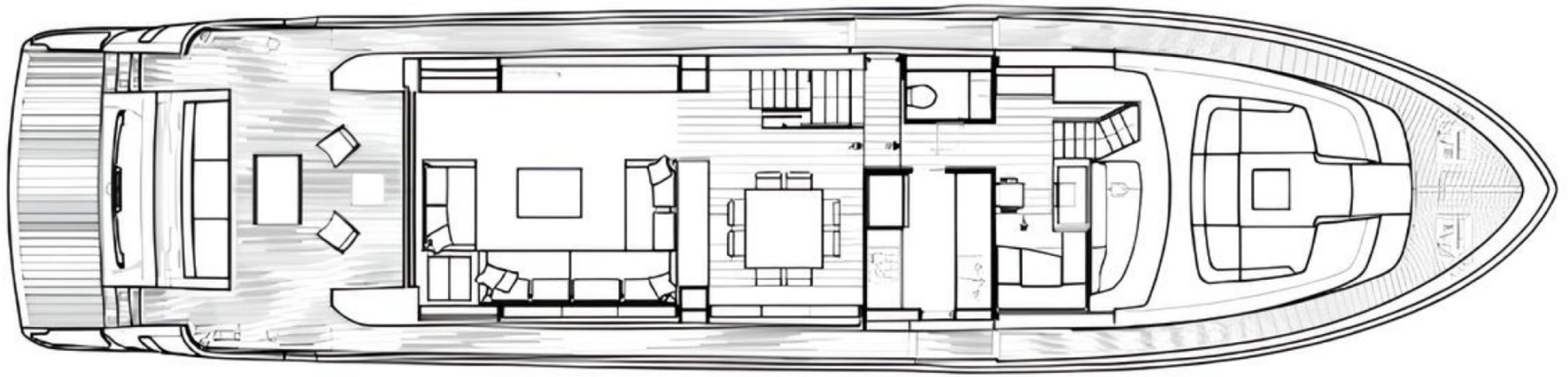
General Arrangement



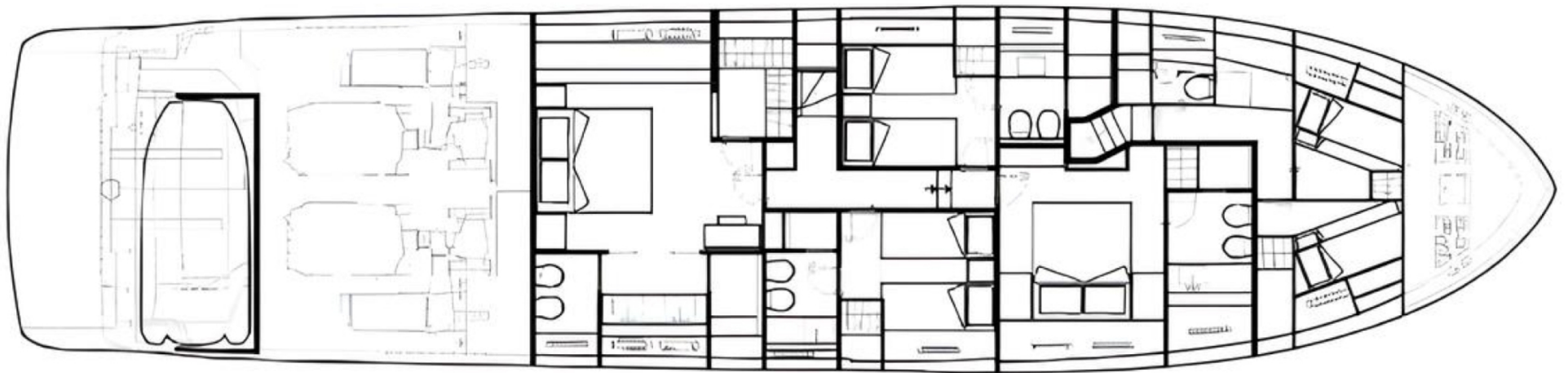
PROFILE



FLYBRIDGE



MAIN DECK



LOWER DECK



KIRILL KUATOV

+377 607 93 15 20

+39 333 576 44 44

[Send e-mail](#)

[WhatsApp](#)

[Telegram](#)