



Brokerage

NAU  
YACHTS

CARAT

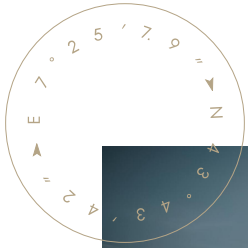
MOTOR YACHT WALLY 27.03M 2024

€7,500,000

FLAG - PALAU

MOTOR YACHT

# CARAT



**CARAT** is a 27-meter motor yacht built by **Wally** in 2024. This yacht offers a unique blend of innovative design and comfort, with an interior volume of around 200 GT, despite its relatively compact size. This is achieved thanks to the futuristic layout with a hull inspired by spacecraft design.

Onboard, **CARAT** accommodates up to 8 guests in 4 cabins. The master suite on the main deck features panoramic windows and separate his-and-hers bathrooms, offering stunning views. On the lower deck, there is a VIP cabin and two guest cabins, each with an en-suite bathroom. The spacious salon, which is 50% larger than those on yachts of similar class, connects the lower deck to the flybridge via a central staircase.

The flybridge features a lounge area with sunbeds and a shaded dining table, while the main deck's folding terraces expand the beach club to 32 square meters. The yacht also has hidden garages for the Williams tender and other water toys.

Powered by two Volvo Penta D13 IPS1350 engines, each delivering 1000 horsepower, **CARAT** can reach a top speed of 23 knots and a cruising speed of 20 knots. For added comfort, **CARAT** is equipped with Seakeeper stabilizers to ensure smooth sailing.

[see more information about M/Y CARAT at www.nauyachts.com](http://www.nauyachts.com)

# SPECIFICATION

SHIPYARD, MODEL	Wally Wallywhy200
BUILT	2024
LENGTH	27.03 m
WATERLINE LENGTH	24.12 m
HULL CONFIGURATION	SEMI-DISPLACEMENT
BEAM	7.66 m
RANGE	1000
DRAFT	2 m
GROSS TONNAGE	199 GT
YACHT CLASS	RINA
CABINS	4+3
MASTER CABIN	MAIN DECK
GUESTS	8
BERTHS	8+5
CREW	5
HEADS	5+3

EXTERIOR DESIGN	LUCA BASSANI DESIGN
INTERIOR DESIGN	VALLICELLI
HULL	GRP
SUPERSTRUCTURE	GRP
ENGINES	4 x Volvo Penta IPS 1000 h.p.
TYPE OF DRIVE	VOLVO PENTA IPS
ENGINE HOURS	360 h
MAXIMUM SPEED	23 kn
CRUSING SPEED	20 kn
FUEL CONSUMPTION AT ECONOMICAL SPEED	N/A
FUEL	12000 l
GREY WATER	N/A
BLACK WATER	N/A
FRESH WATER	2200 l
DISPLACEMENT	N/A

[see more information about M/Y CARAT at www.nauyachts.com](http://www.nauyachts.com)



EXTERIOR WALLYWHY200 2024 MY CARAT

M/Y CARAT



EXTERIOR WALLYWHY200 2024 MY CARAT

M/Y CARAT



EXTERIOR WALLYWHY200 2024 MY CARAT

M/Y CARAT



EXTERIOR WALLYWHY200 2024 MY CARAT

M/Y CARAT



EXTERIOR WALLYWHY200 2024 MY CARAT

M/Y CARAT



EXTERIOR WALLYWHY200 2024 MY CARAT

M/Y CARAT



EXTERIOR WALLYWHY200 2024 MY CARAT

M/Y CARAT



SWIMMING PLATFORM

M/Y CARAT



SWIMMING PLATFORM

M/Y CARAT



AFT MAIN DECK DINING AREA

M/Y CARAT



AFT MAIN DECK DINING AREA

M/Y CARAT



BOW LOUNGE AREA

M/Y CARAT



FLYBRIDGE DINING AREA

M/Y CARAT



FLYBRIDGE LOUNGE AREA

M/Y CARAT



FLYBRIDGE LOUNGE AREA

M/Y CARAT



MAIN HELM STATION

M/Y CARAT



MAIN SALON LOUNGE AREA

M/Y CARAT



MAIN SALON LOUNGE AREA

M/Y CARAT



MAIN SALON LOUNGE AREA

M/Y CARAT



MAIN SALON LOUNGE AREA

M/Y CARAT



MASTER CABIN

M/Y CARAT



MASTER BATHROOM

M/Y CARAT



MASTER BATHROOM

M/Y CARAT



VIP CABIN

M/Y CARAT



VIP CABIN

M/Y CARAT



VIP CABIN

M/Y CARAT





VIP CABIN

M/Y CARAT



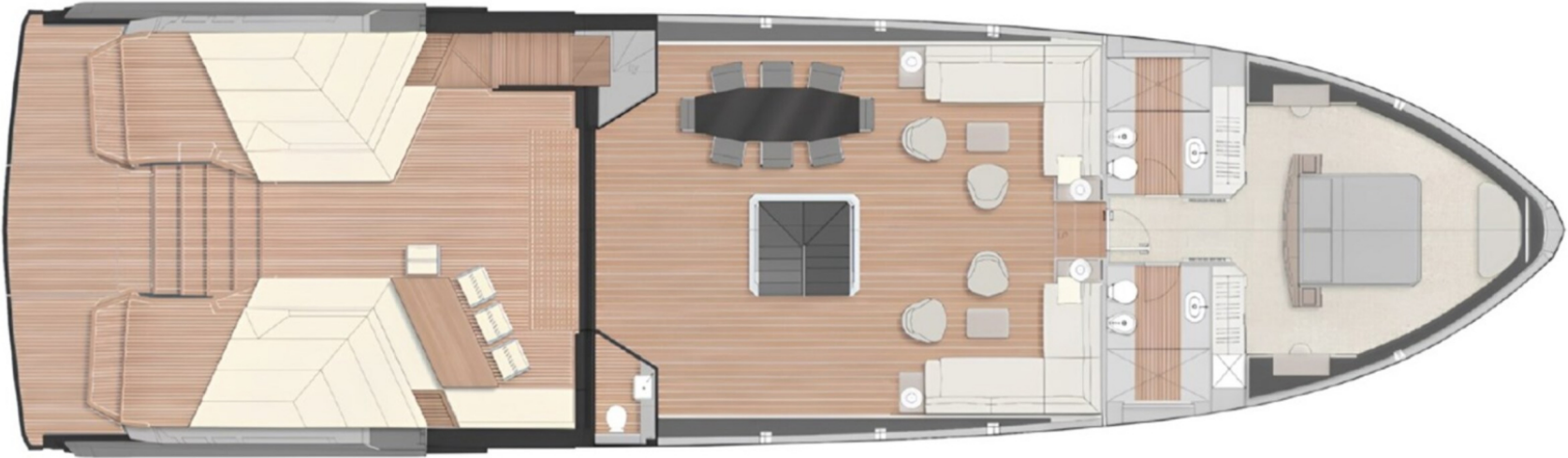
VIP BATHROOM

M/Y CARAT

# General Arrangement



FLYBRIDGE



MAIN DECK



LOWER DECK



KIRILL KUATOV

+377 607 93 15 20

+39 333 576 44 44

[Send e-mail](#)

[WhatsApp](#)

[Telegram](#)