



Brokerage

NAU  
YACHTS

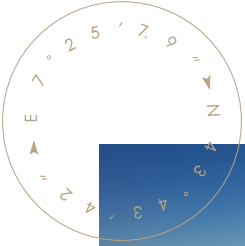
MYTHOS G

MOTOR YACHT POSILLIPO 25.91M 2009

€1,350,000 (VAT paid)  
FLAG - MALTA

MOTOR YACHT

## MYTHOS G



**MYTHOS G** is a 26-metre **Posillipo** motor yacht, consistently maintained to a high technical standard. In 2025, both main generators were replaced, further enhancing onboard reliability and operational efficiency. Her planing hull and twin MTU engines rated at 1,830 hp each deliver a comfortable cruising speed of 23 knots and a top speed of up to 29 knots, making her well suited for fast island-hopping and efficient coastal cruising.

She accommodates up to 10 guests in four cabins, including a full-beam Master suite, a VIP cabin, and two guest cabins with Pullman berths, offering flexible sleeping arrangements for families or mixed groups. All cabins feature en-suite bathrooms and have been refreshed as part of the recent refit.

The main salon, filled with natural light through panoramic windows, combines a lounge and dining area in a single, open space. Outside, the yacht offers several inviting deck areas, with sun pads on the foredeck, an alfresco dining area in the cockpit, and a flybridge with 360-degree views, a dining table, sun loungers, and a grill for relaxed open-air entertaining.

For water sports and fun on the water, **MYTHOS G** comes fully equipped with a 4.3-metre Zar tender, a Sea-Doo, two Seabob F5 units, SUP boards, inflatable toys, and snorkelling and fishing gear.

With commercial Maltese registration, low engine hours, and a professional crew of four, **MYTHOS G** represents a turnkey opportunity for both charter operations and private ownership, combining strong performance with a freshly updated, guest-friendly layout.

[see more information about M/Y MYTHOS G at www.nauyachts.com](http://www.nauyachts.com)



# SPECIFICATION

SHIPYARD, MODEL	Posillipo 85'
BUILT	2009
LENGTH	25.91 m
WATERLINE LENGTH	21.79 m
HULL CONFIGURATION	PLANING
BEAM	6.4 m
RANGE	600
DRAFT	2.44 m
GROSS TONNAGE	65 GT
YACHT CLASS	CE
CABINS	4+2
MASTER CABIN	LOWER DECK
GUESTS	10
BERTHS	10+4
CREW	4
HEADS	5+2

EXTERIOR DESIGN	POSILLIPO YACHTS
INTERIOR DESIGN	POSILLIPO YACHTS
HULL	GRP
SUPERSTRUCTURE	GRP
ENGINES	2 x MTU 16V 2000 M91 2000 h.p.
TYPE OF DRIVE	SHAFT LINE
ENGINE HOURS	1700 h
MAXIMUM SPEED	29 kn
CRUISING SPEED	23 kn
FUEL CONSUMPTION AT ECONOMICAL SPEED	~ 130 l/h
FUEL	9960 l
GREY WATER	420 l
BLACK WATER	500 l
FRESH WATER	1500 l
DISPLACEMENT	N/A

[see more information about M/Y MYTHOS G at www.nauyachts.com](http://www.nauyachts.com)



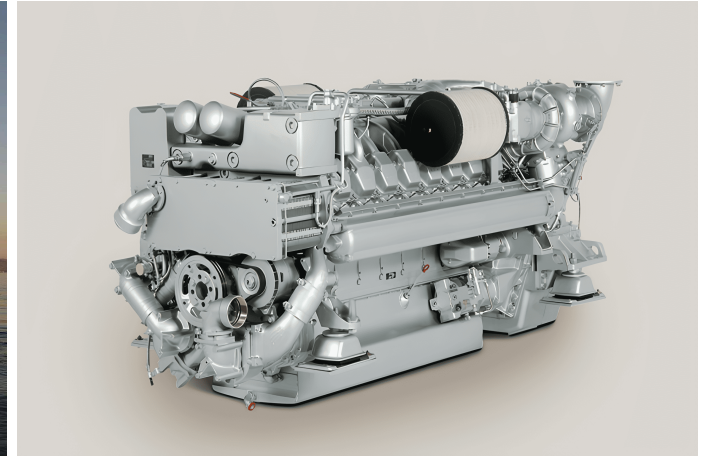
### 1. COMMERCIAL MALTESE REGISTRATION

Fully charter-compliant with a proven charter track record and strong market demand, allowing the next owner to place the yacht into charter immediately and generate income from day one.



### 2. EU VAT PAID

The yacht is EU VAT paid, ensuring smooth ownership transfer and unrestricted use within EU waters.



### 3. LOW ENGINE HOURS

Only 1,700 engine hours for her year, well below market average, reflecting careful operation and strong technical condition.





EXTERIOR POSILLIPO 85 2009 MY MYTHOS G

M/Y MYTHOS G





EXTERIOR POSILLIPO 85 2009 MY MYTHOS G

M/Y MYTHOS G





EXTERIOR POSILLIPO 85 2009 MY MYTHOS G

M/Y MYTHOS G





EXTERIOR POSILLIPO 85 2009 MY MYTHOS G

M/Y MYTHOS G





EXTERIOR POSILLIPO 85 2009 MY MYTHOS G

M/Y MYTHOS G





AFT AREA

M/Y MYTHOS G





SWIMMING PLATFORM

M/Y MYTHOS G





COCKPIT DINING AREA

M/Y MYTHOS G





FLYBRIDGE LOUNGE AREA

M/Y MYTHOS G





FLYBRIDGE LOUNGE AREA

M/Y MYTHOS G





FLYBRIDGE LOUNGE AREA

M/Y MYTHOS G





FLYBRIDGE DINING AREA

M/Y MYTHOS G





BOW AREA

M/Y MYTHOS G





BOW SUNBATHING AREA

M/Y MYTHOS G





MAIN SALON LOUNGE AREA

M/Y MYTHOS G





MAIN SALON DINING AREA

M/Y MYTHOS G





MAIN SALON DINING AREA

M/Y MYTHOS G





MAIN SALON DINING AREA

M/Y MYTHOS G





MAIN SALON DINING AREA

M/Y MYTHOS G





MAIN SALON DINING AREA

M/Y MYTHOS G





MAIN SALON

M/Y MYTHOS G





MAIN HELM STATION

M/Y MYTHOS G





MASTER CABIN

M/Y MYTHOS G





MASTER CABIN

M/Y MYTHOS G





MASTER CABIN

M/Y MYTHOS G





MASTER CABIN

M/Y MYTHOS G





MASTER CABIN

M/Y MYTHOS G





MASTER CABIN

M/Y MYTHOS G





MASTER CABIN LOUNGE AREA

M/Y MYTHOS G





MASTER BATHROOM

M/Y MYTHOS G





MASTER BATHROOM

M/Y MYTHOS G





MASTER BATHROOM

M/Y MYTHOS G





VIP CABIN

M/Y MYTHOS G





VIP CABIN

M/Y MYTHOS G





VIP CABIN

M/Y MYTHOS G





VIP CABIN

M/Y MYTHOS G





VIP BATHROOM

M/Y MYTHOS G





GUEST CABIN

M/Y MYTHOS G





GUEST CABIN

M/Y MYTHOS G





GUEST BATHROOM





GUEST CABIN

M/Y MYTHOS G





GUEST CABIN

M/Y MYTHOS G





GUEST CABIN

M/Y MYTHOS G





GUEST BATHROOM

M/Y MYTHOS G

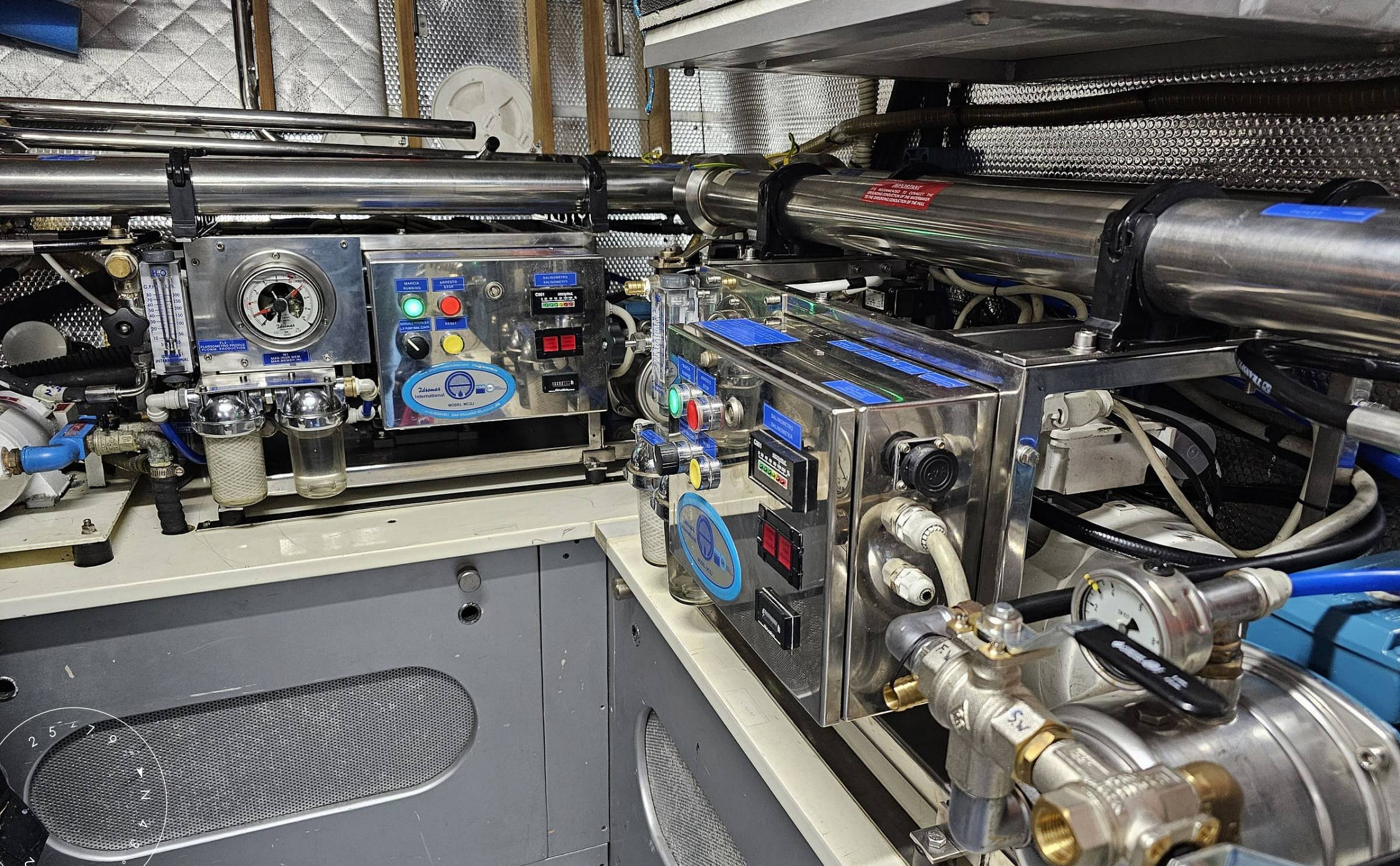




GALLEY

M/Y MYTHOS G





ENGINE ROOM

M/Y MYTHOS G





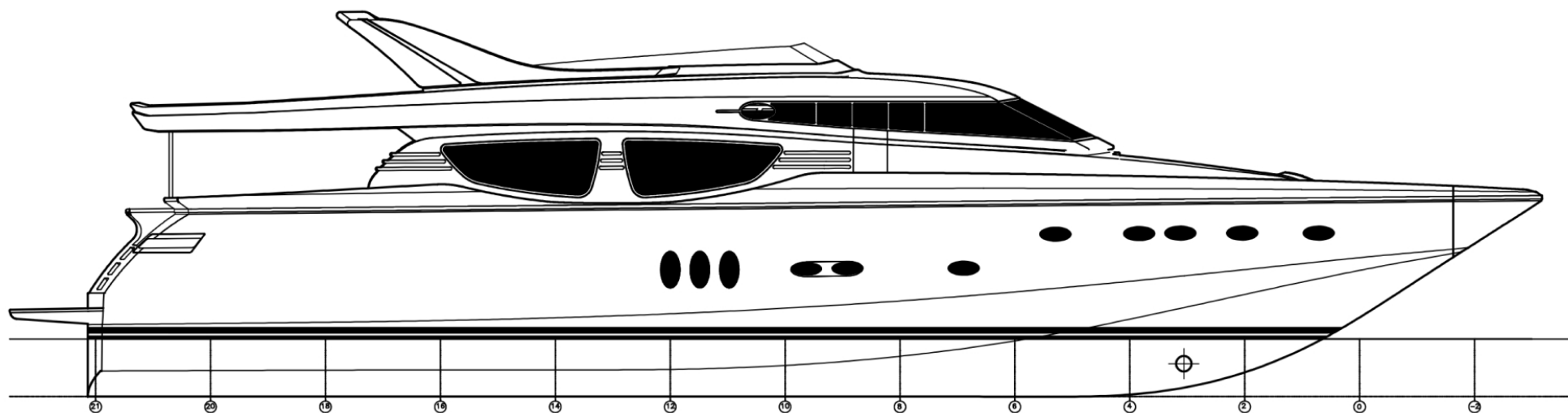
ENGINE ROOM

M/Y MYTHOS G



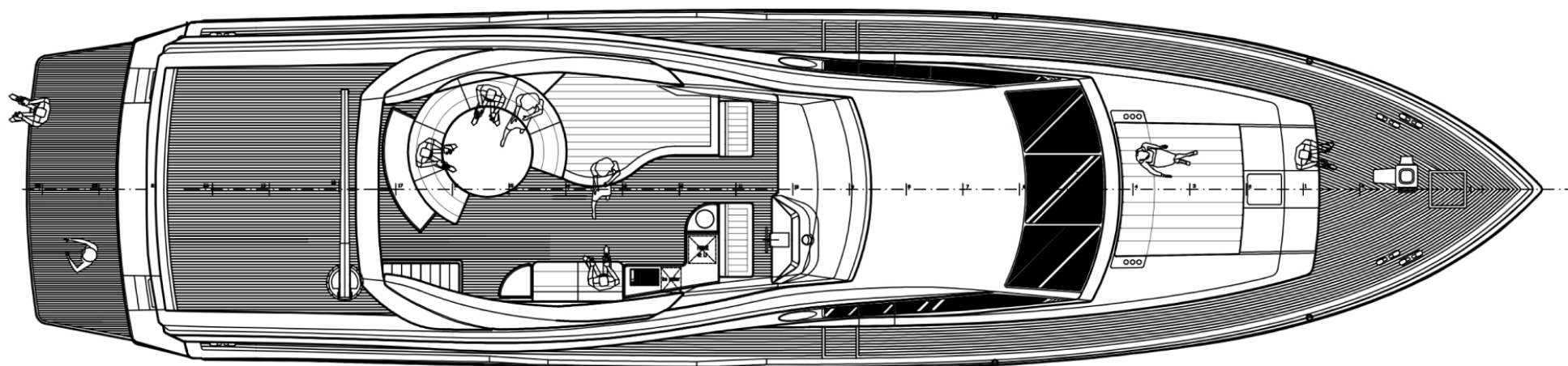
# General Arrangement





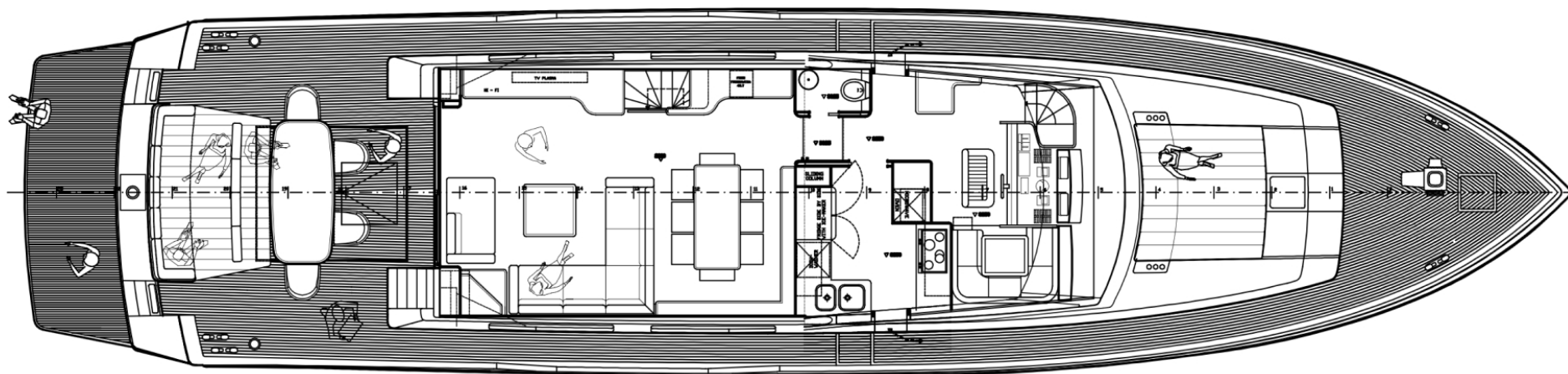
PROFILE





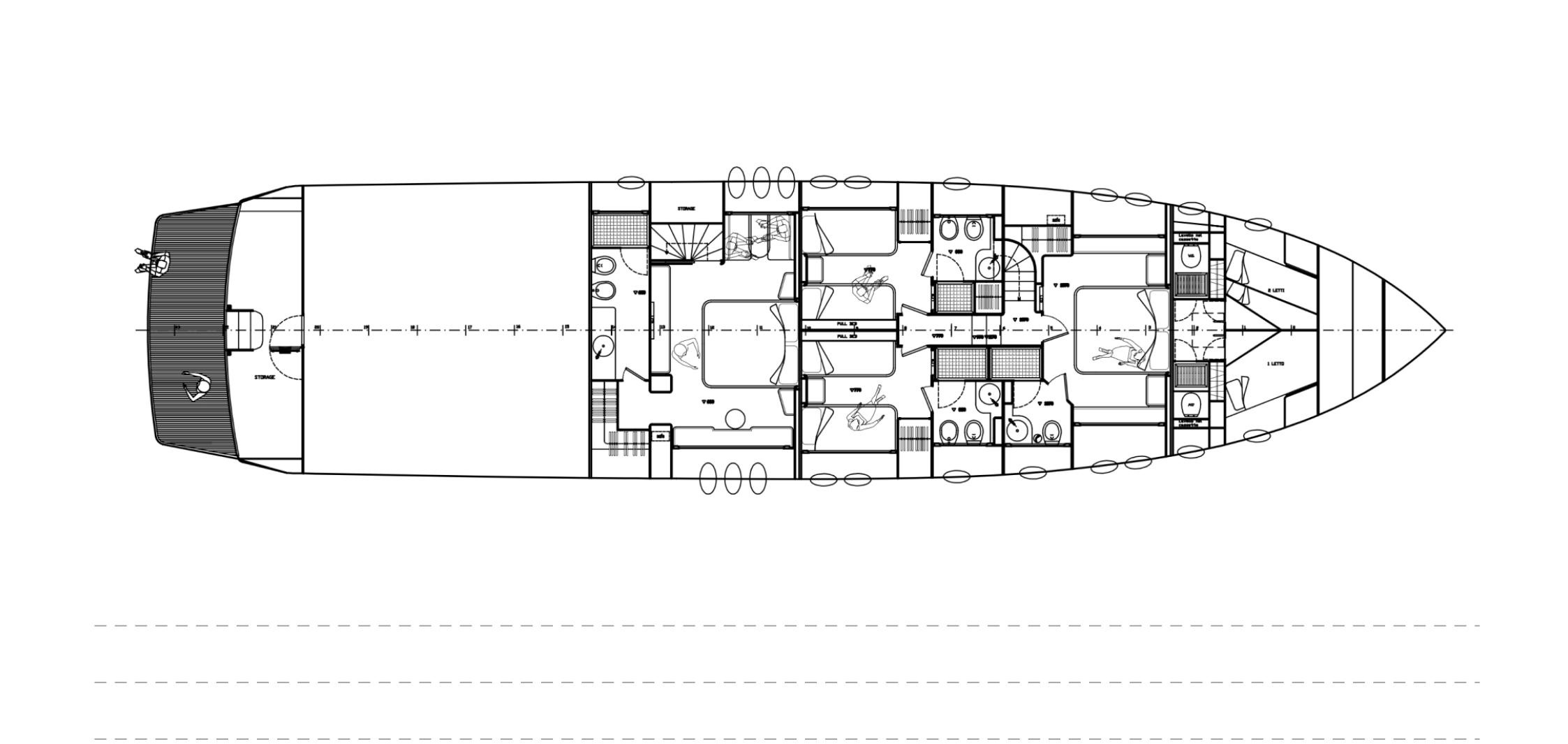
FLYBRIDGE





MAIN DECK







# EQUIPMENT

GENERAL	EXTERIOR	INTERIOR	ELECTRONICS AND NAVIGATION	OTHER
<ul style="list-style-type: none"> <li>• Onan generators – 2 × 29 kW</li> <li>• Bow thruster</li> <li>• Stern thruster</li> <li>• Freshwater maker – 2 units (capacity: 230 l/h + 160 l/h)</li> <li>• Air conditioning system – total capacity 160,000 BTU</li> </ul>	<ul style="list-style-type: none"> <li>• Trim tabs</li> <li>• Flybridge deck crane (davits)</li> <li>• Blue hull paint</li> <li>• Illuminated yacht name on the stern</li> <li>• Aft mooring lights</li> <li>• CCTV system: aft docking camera and side-deck cameras</li> <li>• Cockpit side access gates</li> <li>• Sea-Doo jet ski – 260 hp</li> <li>• Tender: Zar ZF-43 with Yamaha 60 hp outboard</li> <li>• Teak cockpit table</li> <li>• Teak decking in cockpit</li> <li>• Teak decking on side decks</li> <li>• Teak decking on swim platform</li> <li>• Teak decking on flybridge</li> <li>• Life rafts – 2 × 6 persons</li> <li>• Flybridge bimini top</li> <li>• EPIRB ...</li> </ul>	<ul style="list-style-type: none"> <li>• Additional pullman berths in both guest cabins</li> <li>• 43" TV on electric lift in the main saloon</li> <li>• 43" TV in the owner's cabin</li> <li>• Blackout blinds in the owner's cabin</li> <li>• Main saloon dining table for 8 guests</li> <li>• Vertical blinds in the main saloon</li> <li>• Electrically adjustable captain's chair at the main helm</li> <li>• Dimmer switches for all interior and exterior lighting</li> <li>• Opening portlights in all cabins</li> </ul>	<ul style="list-style-type: none"> <li>• Simrad radar antenna</li> <li>• Searchlight mounted on the radar mast</li> <li>• Intellian satellite antenna</li> <li>• Additional spare radar antenna dome (empty housing)</li> <li>• Simrad autopilot</li> <li>• VHF radio</li> <li>• Furuno fish-finding echo sounder</li> </ul>	<ul style="list-style-type: none"> <li>• Major upgrades 2022-2025 New Smart TV's x 5</li> <li>• Installation of Wi-Fi upgrade throughout the boat</li> <li>• New carpets, curtains, blinds throughout the boat</li> <li>• New electric stove, hob, fridge, washer dryer in the galley</li> <li>• CCTV recorder</li> <li>• New GPS plotter on the flybridge</li> <li>• Additional 25m of chain</li> <li>• All MTU coolers cleaned</li> <li>• MTU sea pumps replaced with new ones</li> <li>• Turbine overhaul</li> <li>• MTU starters maintenance</li> <li>• MTU crankcase gaskets replacement</li> <li>• Maintenance of all pumps on the boat (grey, black, bilge, a/c, fire, fresh water x2, new ...</li> </ul>





KIRILL KUATOV

+377 607 93 15 20

+39 333 576 44 44

 [Send e-mail](#)

 WhatsApp

 Telegram