



New Build

NAU
YACHTS

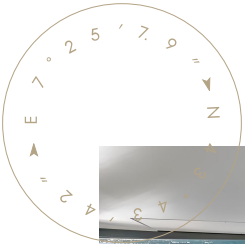
FLY 68

MOTOR YACHT AZIMUT 20.98M 2028

FLAG -

MOTOR YACHT

FLY 68



Azimut Fly 68 is a 20.98-metre flybridge motor yacht that retains the signature **Fly Series** identity while combining a well-balanced spatial architecture with confident performance.

The exterior, designed by Alberto Mancini, features clean, dynamic lines, while the GRP hull with carbon fibre elements achieves an optimal balance between weight, strength and efficiency. Powered by two Volvo Penta IPS 1350 engines of 1,000 hp each, the **Fly 68** reaches speeds of up to 32 knots and cruises comfortably at around 27 knots, offering excellent manoeuvrability and responsive handling.

One of the key strengths of the **Fly 68** is the flexibility of the main deck layout. Owners can choose between a closed galley, an open galley, or an aft galley configuration. Regardless of the option selected, the central area remains a bright, functional saloon with a dedicated dining space, designed for both daily living and entertaining.

The lower deck accommodates four guest cabins for up to eight guests, including a full-beam master suite with en-suite bathroom, as well as a separate crew cabin.

The flybridge is arranged as a versatile outdoor living area with sunbathing spaces, a dining zone and a relaxed lounge atmosphere.

Azimut Fly 68 is well suited to owners who value layout versatility, clear zoning and a balanced combination of comfort, performance and Italian design.

[see more information about M/Y FLY 68 at www.nauyachts.com](http://www.nauyachts.com)

SPECIFICATION

SHIPYARD, MODEL	Azimut Fly 68
DELIVERY AT THE SHIPYARD	2028
LENGTH	20.98 m
WATERLINE LENGTH	17.32 m
HULL CONFIGURATION	PLANING
BEAM	5.23 m
RANGE	424
DRAFT	1.6 m
GROSS TONNAGE	43.7 GT
YACHT CLASS	CE CLASS A
CABINS	4+1
MASTER CABIN	LOWER DECK
GUESTS	8
BERTHS	8+2
CREW	2
HEADS	3+1

EXTERIOR DESIGN	ALBERTO MANCINI
INTERIOR DESIGN	ACHILLE SALVAGNI ARCHITETTI
HULL	GRP
SUPERSTRUCTURE	CARBON FIBRE
ENGINES	2 x Volvo Penta IPS 1000 h.p.
TYPE OF DRIVE	VOLVO PENTA IPS
ENGINE HOURS	N/A
MAXIMUM SPEED	32 kn
CRUISING SPEED	27 kn
FUEL CONSUMPTION AT ECONOMICAL SPEED	~ 120 l/h
FUEL	3700 l
GREY WATER	N/A
BLACK WATER	N/A
FRESH WATER	1000 l
DISPLACEMENT	43.7

[see more information about M/Y FLY 68 at www.nauyachts.com](http://www.nauyachts.com)



EXTERIOR AZIMUT FLY 68

M/Y FLY 68



EXTERIOR AZIMUT FLY 68

M/Y FLY 68



COCKPIT DINING AREA

M/Y FLY 68



COCKPIT DINING AREA

M/Y FLY 68



BOW LOUNGE AREA

M/Y FLY 68



BOW LOUNGE AREA

M/Y FLY 68



BOW LOUNGE AREA

M/Y FLY 68



FLYBRIDGE LOUNGE AREA

M/Y FLY 68



FLYBRIDGE LOUNGE AREA

M/Y FLY 68



FLYBRIDGE LOUNGE AREA

M/Y FLY 68



MAIN SALON LOUNGE AREA

M/Y FLY 68



MAIN SALON LOUNGE AREA

M/Y FLY 68



MAIN SALON LOUNGE AREA

M/Y FLY 68



MAIN SALON LOUNGE AREA

M/Y FLY 68



MAIN SALON LOUNGE AREA

M/Y FLY 68



MAIN SALON LOUNGE AREA

M/Y FLY 68



MAIN SALON LOUNGE AREA

M/Y FLY 68



MAIN SALON LOUNGE AREA

M/Y FLY 68



MASTER CABIN

M/Y FLY 68



MASTER BATHROOM

M/Y FLY 68



VIP CABIN

M/Y FLY 68



GUEST CABIN

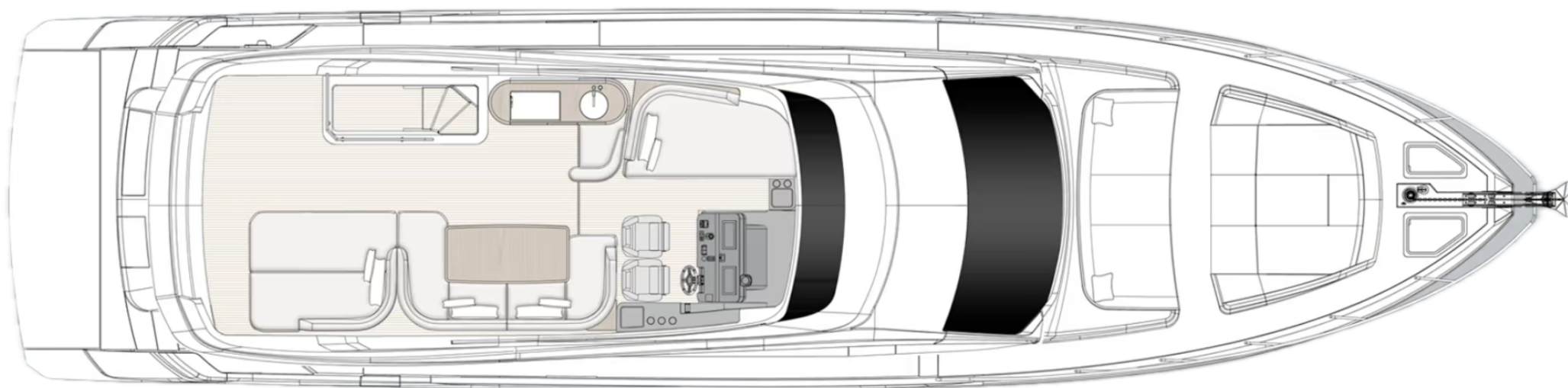
M/Y FLY 68



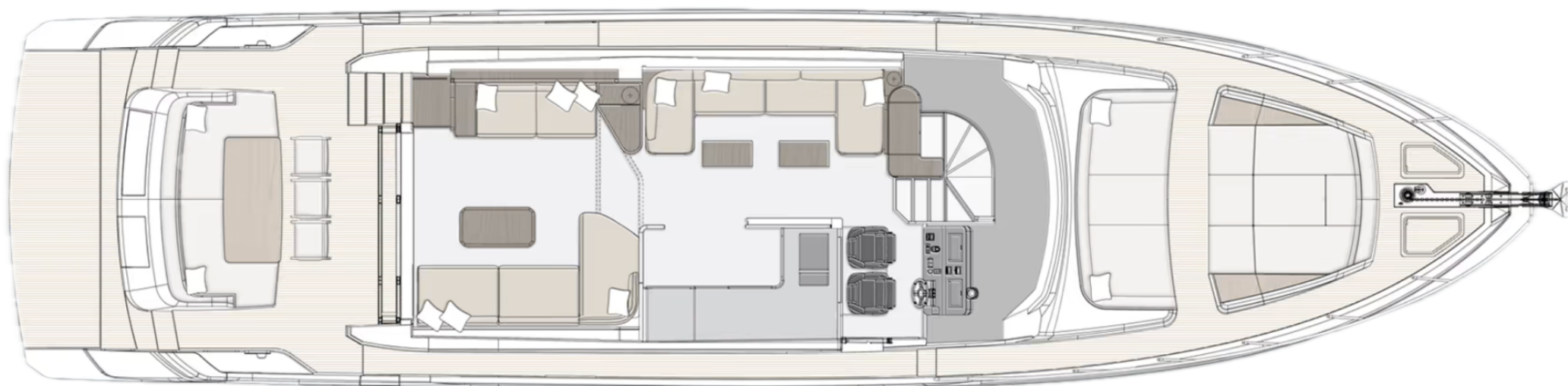
CREW CABIN

M/Y FLY 68

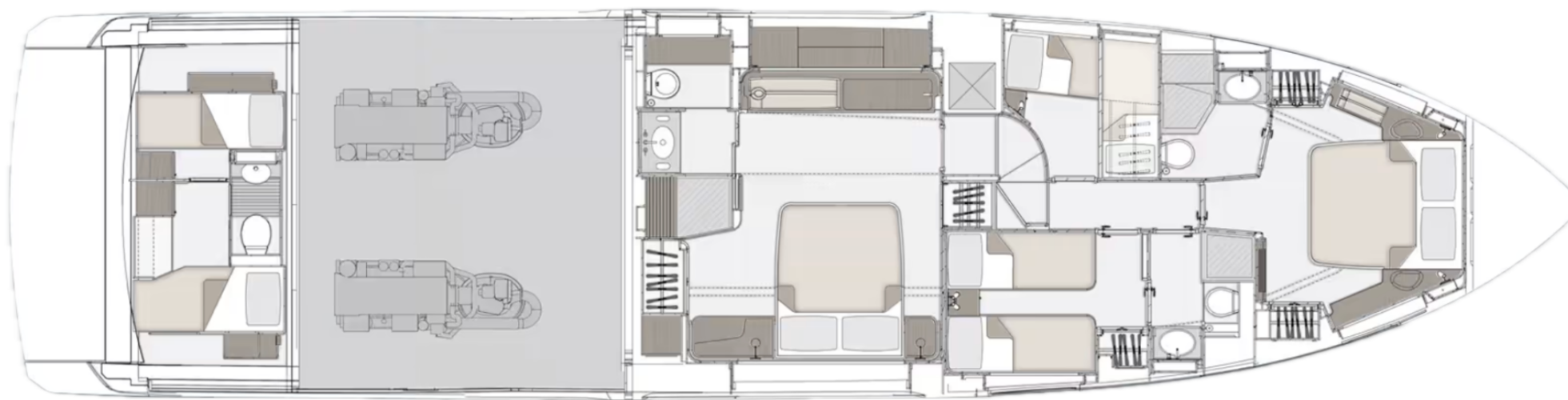
General Arrangement



FLYBRIDGE



MAIN DECK




LOWER DECK



KIRILL KUATOV

+377 607 93 15 20

+39 333 576 44 44

 [Send e-mail](#)

 WhatsApp

 Telegram

[More information about M/Y FLY 68 at www.nauyachts.com](#)

[Watch video](#)