



New Build

NAU  
YACHTS

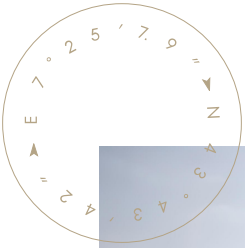
FLY 72

MOTOR YACHT    AZIMUT 22.69M    2028

FLAG -

MOTOR YACHT

## FLY 72



**Azimut Fly 72** is a modern flybridge yacht that combines generous living spaces with confident performance. The GRP hull, enhanced with carbon fibre, reduces weight and improves efficiency, delivering stable, predictable handling and responsive control underway.

The flybridge is designed as a versatile outdoor living area, featuring a dining space, bar and an open aft section that can be easily adapted to different uses, from relaxation to social gatherings. Forward, a transformable bow lounge with optional sunshade provides a comfortable setting for sunbathing or quiet moments at anchor.

On the main deck, the saloon and dining area are filled with natural light thanks to expansive panoramic glazing. The galley is strategically positioned near the helm station and side access door and can be closed off when required, enhancing privacy for guest areas. The overall layout is logical and functional, with smooth circulation and no unnecessary transitions.

The lower deck accommodates four guest cabins for up to eight guests, along with a separate crew cabin. The full-beam master cabin stands out for its generous volume, private bathroom and walk-in wardrobe, making the yacht well suited for extended stays on board.

Powered by twin MAN CR V12 engines producing 1,400 hp each, the **Azimut Fly 72** reaches speeds of up to 32 knots and cruises comfortably at around 26 knots. CE Category A certification confirms the yacht's readiness for open-sea operation.

[see more information about M/Y FLY 72 at www.nauyachts.com](http://www.nauyachts.com)

# SPECIFICATION

SHIPYARD, MODEL	Azimut Fly 72
DELIVERY AT THE SHIPYARD	2028
LENGTH	22.69 m
WATERLINE LENGTH	19.77 m
HULL CONFIGURATION	PLANING
BEAM	5.62 m
RANGE	451
DRAFT	1.82 m
GROSS TONNAGE	94 GT
YACHT CLASS	CE CLASS A
CABINS	4+1
MASTER CABIN	LOWER DECK
GUESTS	8
BERTHS	8+2
CREW	2
HEADS	4+1

EXTERIOR DESIGN	ALBERTO MANCINI
INTERIOR DESIGN	FABIO FANTOLINO
HULL	GRP
SUPERSTRUCTURE	CARBON FIBRE
ENGINES	2 x MAN V12 1400 h.p.
TYPE OF DRIVE	SHAFT LINE
ENGINE HOURS	N/A
MAXIMUM SPEED	32 kn
CRUISING SPEED	26 kn
FUEL CONSUMPTION AT ECONOMICAL SPEED	~ 140 l/h
FUEL	5200 l
GREY WATER	N/A
BLACK WATER	N/A
FRESH WATER	1100 l
DISPLACEMENT	53.5

[see more information about M/Y FLY 72 at www.nauyachts.com](http://www.nauyachts.com)





EXTERIOR AZIMUT FLY 72

M/Y FLY 72





COCKPIT DINING AREA

M/Y FLY 72





BOW LOUNGE AREA

M/Y FLY 72





FLYBRIDGE LOUNGE AREA

M/Y FLY 72





FLYBRIDGE LOUNGE AREA

M/Y FLY 72





FLYBRIDGE LOUNGE AREA

M/Y FLY 72





FLYBRIDGE LOUNGE AREA

M/Y FLY 72





FLYBRIDGE GRILL

M/Y FLY 72





MAIN SALON LOUNGE AREA

M/Y FLY 72



MAIN SALON LOUNGE AREA

M/Y FLY 72





MAIN SALON LOUNGE AREA

M/Y FLY 72



MAIN SALON LOUNGE AREA

M/Y FLY 72





MAIN SALON LOUNGE AREA

M/Y FLY 72



GALLEY

M/Y FLY 72





MASTER CABIN

M/Y FLY 72





MASTER CABIN

M/Y FLY 72





MASTER CABIN

M/Y FLY 72





VIP CABIN

M/Y FLY 72





GUEST CABIN

M/Y FLY 72





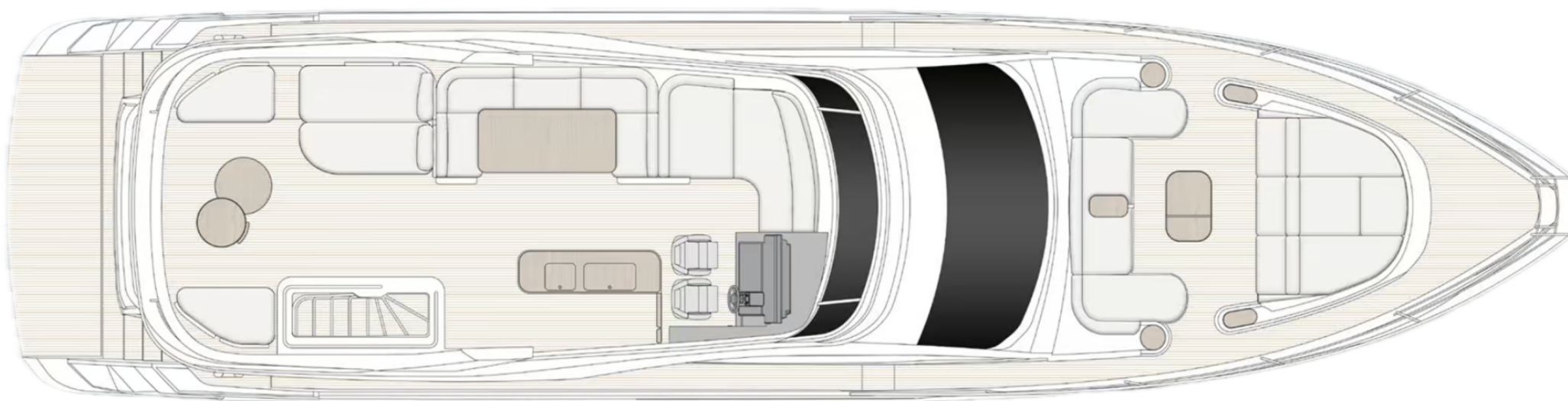
GUEST CABIN

M/Y FLY 72



# General Arrangement

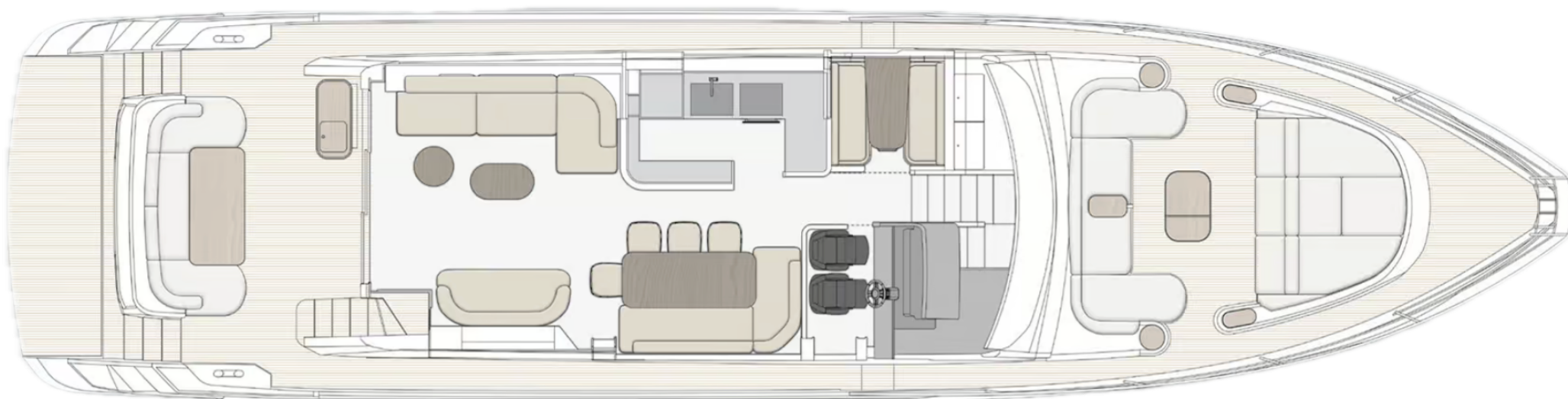




---

FLYBRIDGE

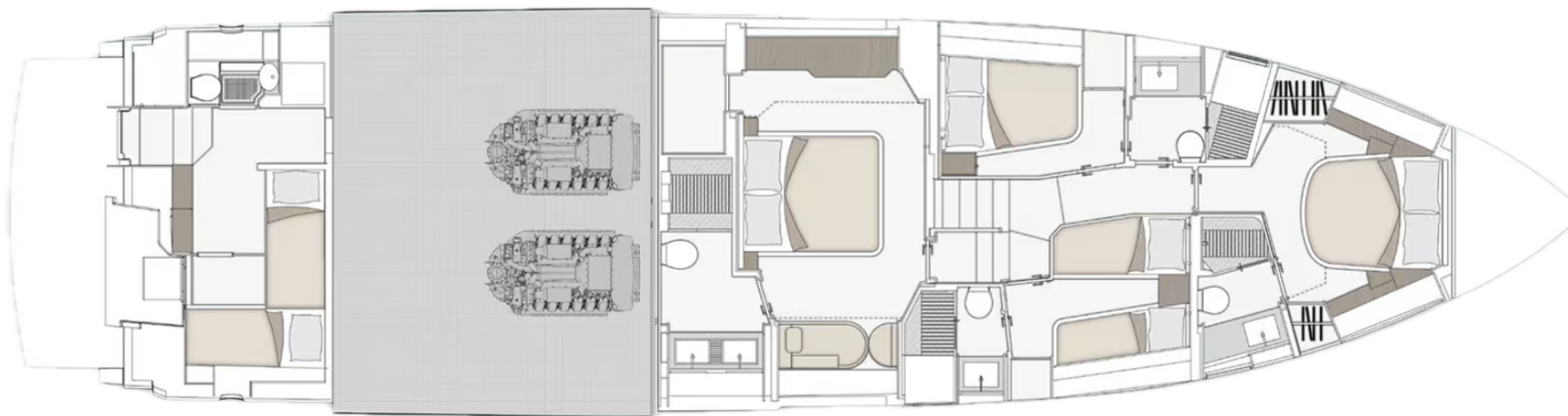




---

MAIN DECK





---

LOWER DECK



## KIRILL KUATOV

+377 607 93 15 20

+39 333 576 44 44

 [Send e-mail](#)

 WhatsApp

 Telegram

[More information about M/Y FLY 72 at www.nauyachts.com](#)

[Watch video](#)