



New Build

NAU  
YACHTS

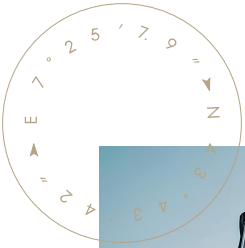
FLY 78

MOTOR YACHT    AZIMUT 23.64M    2028

FLAG -

MOTOR YACHT

## FLY 78



**Azimut Fly 78** is a 23.64-metre flybridge motor yacht designed for owners seeking the volume and comfort of a larger class while retaining agility, performance and easy handling. The GRP hull, enhanced with carbon fibre, delivers a stable, predictable ride and efficient cruising characteristics.

The exterior styling by Alberto Mancini is defined by strong horizontal lines and well-balanced proportions. The flybridge serves as the yacht's primary outdoor living area, featuring a lounge, a dining space under a hardtop with bar, and an open aft section that can be configured for different uses, from sunbathing to entertaining. The main deck offers a bright, flexible layout where the salon and cockpit transition seamlessly between lounge and dining configurations. Panoramic glazing enhances the sense of openness and maintains a constant visual connection with the sea.

Interiors by Achille Salvagni Architects are executed in a refined contemporary style, combining soft forms with high-quality materials. Service areas and the galley are kept separate from guest spaces, ensuring privacy and smooth onboard operation. The lower deck accommodates four guest cabins for up to eight guests, all with en-suite bathrooms, along with a separate crew cabin, making the **Azimut Fly 78** a well-balanced yacht for both private cruising and extended stays on board.

[see more information about M/Y FLY 78 at www.nauyachts.com](http://www.nauyachts.com)

# SPECIFICATION

SHIPYARD, MODEL	Azimut 78 Fly
DELIVERY AT THE SHIPYARD	2028
LENGTH	23.64 m
WATERLINE LENGTH	20.92 m
HULL CONFIGURATION	PLANING
BEAM	5.75 m
RANGE	420
DRAFT	1.77 m
GROSS TONNAGE	58 GT
YACHT CLASS	CE CLASS A
CABINS	4+1
MASTER CABIN	LOWER DECK
GUESTS	8
BERTHS	8+2
CREW	2
HEADS	4+1

EXTERIOR DESIGN	ALBERTO MANCINI
INTERIOR DESIGN	ACHILLE SALVAGNI ARCHITETTI
HULL	GRP
SUPERSTRUCTURE	CARBON FIBRE
ENGINES	3 x Volvo Penta IPS 1200 900 h.p.
TYPE OF DRIVE	VOLVO PENTA IPS
ENGINE HOURS	N/A
MAXIMUM SPEED	33 kn
CRUISING SPEED	26 kn
FUEL CONSUMPTION AT ECONOMICAL SPEED	~ 175 l/h
FUEL	5000 l
GREY WATER	N/A
BLACK WATER	N/A
FRESH WATER	1100 l
DISPLACEMENT	58

[see more information about M/Y FLY 78 at www.nauyachts.com](http://www.nauyachts.com)





EXTERIOR AZIMUT FLY 78

M/Y FLY 78





EXTERIOR AZIMUT FLY 78

M/Y FLY 78





EXTERIOR AZIMUT FLY 78

M/Y FLY 78





GARAGE

M/Y FLY 78





COCKPIT DINING AREA

M/Y FLY 78





COCKPIT DINING AREA

M/Y FLY 78





STARBOARD

M/Y FLY 78





BOW LOUNGE AREA

M/Y FLY 78





FLYBRIDGE LOUNGE AREA

M/Y FLY 78





FLYBRIDGE LOUNGE AREA

M/Y FLY 78





FLYBRIDGE LOUNGE AREA

M/Y FLY 78





FLYBRIDGE LOUNGE AREA

M/Y FLY 78





SECOND HELM STATION

M/Y FLY 78





MAIN SALON LOUNGE AREA

M/Y FLY 78





MAIN SALON LOUNGE AREA

M/Y FLY 78





MAIN SALON LOUNGE AREA

M/Y FLY 78





MAIN SALON DINING AREA

M/Y FLY 78





MAIN HELM STATION

M/Y FLY 78





MAIN HELM STATION

M/Y FLY 78





MASTER CABIN

M/Y FLY 78





MASTER CABIN

M/Y FLY 78





MASTER BATHROOM

M/Y FLY 78





VIP CABIN

M/Y FLY 78





VIP CABIN

M/Y FLY 78





GUEST CABIN

M/Y FLY 78



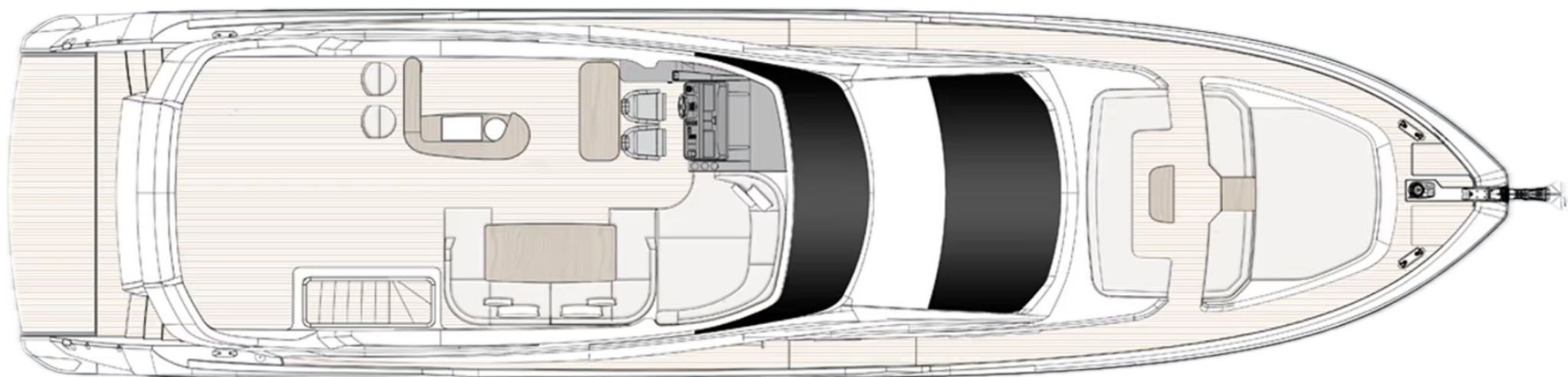


CREW CABIN

M/Y FLY 78

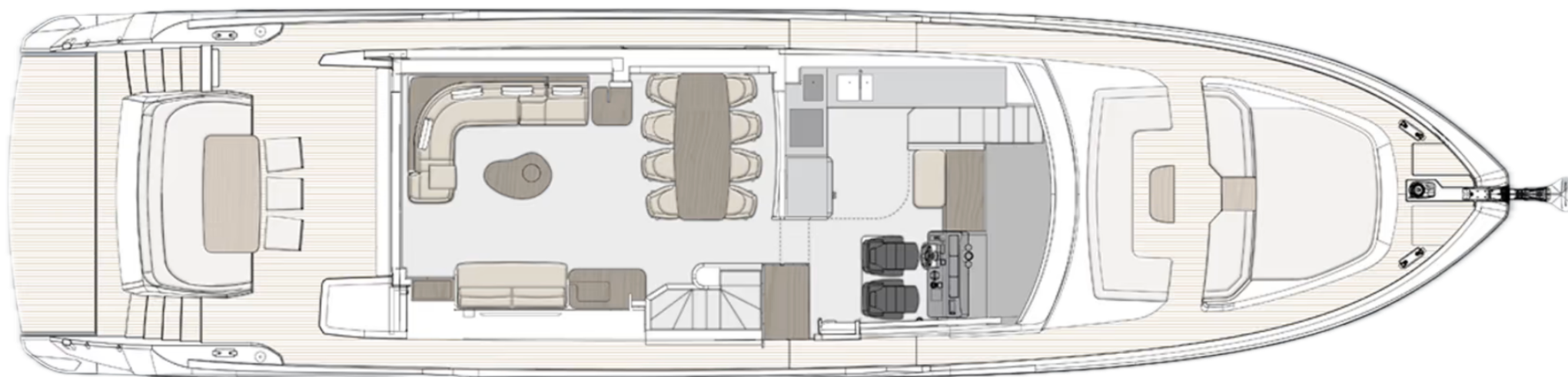
# General Arrangement





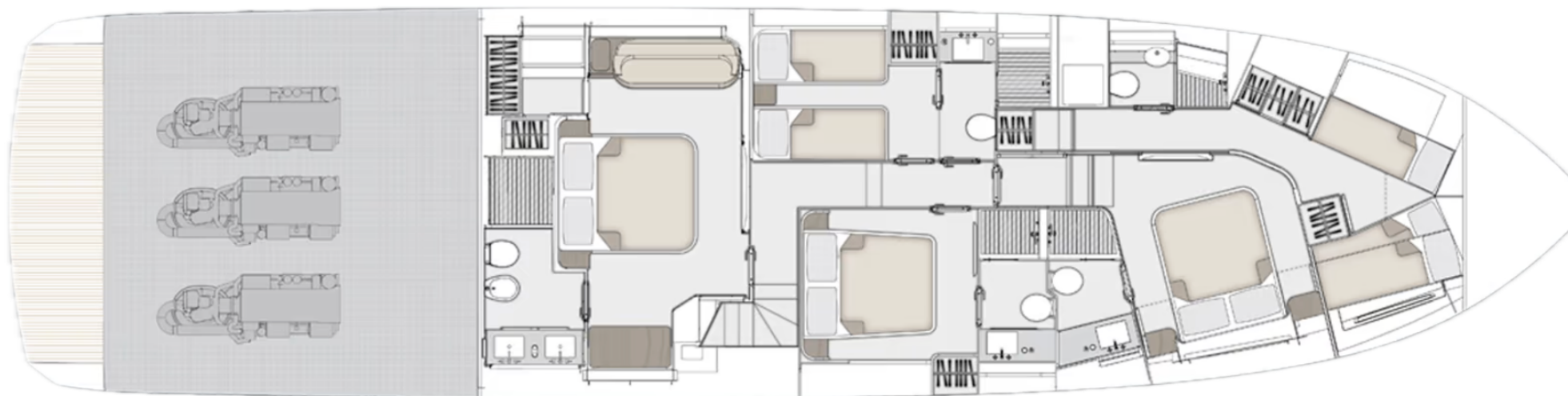
---

FLYBRIDGE



## MAIN DECK





---


## LOWER DECK



## KIRILL KUATOV

+377 607 93 15 20

+39 333 576 44 44

 [Send e-mail](#)

 WhatsApp

 Telegram

[More information about M/Y FLY 78 at www.nauyachts.com](http://www.nauyachts.com)

[Watch video](#)