



New Build

NAU  
YACHTS

FLY 53

MOTOR YACHT    AZIMUT 16.78M    2028

FLAG -

MOTOR YACHT

## FLY 53



**Fly 53** is a family-oriented motor yacht by **Azimut Yachts**, designed with an emphasis on generous space, a practical layout, and contemporary Italian styling. The flybridge serves as the main outdoor living area, featuring a comfortable lounge and a convertible table suitable for both relaxed daytime use and al fresco dining. The overall layout allows for easy circulation and comfort whether underway or at anchor.

The main deck follows an open-plan concept. The galley is positioned aft and directly connected to the saloon and the forward lounge area, simplifying service and enhancing everyday usability. Enlarged glazing and minimal level changes visually expand the interior and flood the space with natural light.

The lower deck accommodates three guest cabins and two bathrooms. The full-beam master cabin is fitted with a double bed, a private en-suite bathroom, and a dedicated wardrobe area, providing a comfortable setting for extended stays on board. A separate crew cabin with its own bathroom increases operational independence.

Powered by twin Volvo Penta IPS 950 engines producing 725 hp each, **Fly 53** reaches a top speed of up to 31 knots and cruises comfortably at around 26 knots. Overall, **Fly 53** represents a well-balanced mid-size yacht for owners who value functionality, comfort, and performance in a versatile cruising platform.

[see more information about M/Y FLY 53 at www.nauyachts.com](http://www.nauyachts.com)

# SPECIFICATION

SHIPYARD, MODEL	Azimut Fly 53
DELIVERY AT THE SHIPYARD	2028
LENGTH	16.78 m
WATERLINE LENGTH	13.2 m
HULL CONFIGURATION	PLANING
BEAM	4.95 m
RANGE	281
DRAFT	1.41 m
GROSS TONNAGE	N/A
YACHT CLASS	CE (B)
CABINS	3+1
MASTER CABIN	LOWER DECK
GUESTS	6
BERTHS	6+1
CREW	1
HEADS	2+1

EXTERIOR DESIGN	ALBERTO MANCINI
INTERIOR DESIGN	AZIMUT YACHTS
HULL	GRP
SUPERSTRUCTURE	GRP
ENGINES	2 x Volvo Penta IPS 725 h.p.
TYPE OF DRIVE	VOLVO PENTA IPS
ENGINE HOURS	N/A
MAXIMUM SPEED	31 kn
CRUISING SPEED	26 kn
FUEL CONSUMPTION AT ECONOMICAL SPEED	~ 115 l/h
FUEL	2400 l
GREY WATER	N/A
BLACK WATER	N/A
FRESH WATER	590 l
DISPLACEMENT	30

[see more information about M/Y FLY 53 at www.nauyachts.com](http://www.nauyachts.com)





EXTERIOR AZIMUT FLY 53

M/Y FLY 53





EXTERIOR AZIMUT FLY 53

M/Y FLY 53





EXTERIOR AZIMUT FLY 53

M/Y FLY 53





EXTERIOR AZIMUT FLY 53

M/Y FLY 53





SWIMMING PLATFORM

M/Y FLY 53





COCKPIT DINING AREA

M/Y FLY 53





COCKPIT DINING AREA

M/Y FLY 53





BOW LOUNGE AREA

M/Y FLY 53





FLYBRIDGE LOUNGE AREA

M/Y FLY 53





SECOND HELM STATION

M/Y FLY 53





FLYBRIDGE LOUNGE AREA

M/Y FLY 53





MAIN SALON LOUNGE AREA

M/Y FLY 53





MAIN SALON LOUNGE AREA

M/Y FLY 53





MAIN SALON LOUNGE AREA

M/Y FLY 53





MAIN SALON DINING AREA

M/Y FLY 53





MAIN HELM STATION

M/Y FLY 53





MASTER CABIN

M/Y FLY 53





MASTER CABIN

M/Y FLY 53





MASTER CABIN

M/Y FLY 53





VIP CABIN

M/Y FLY 53





VIP BATHROOM

M/Y FLY 53





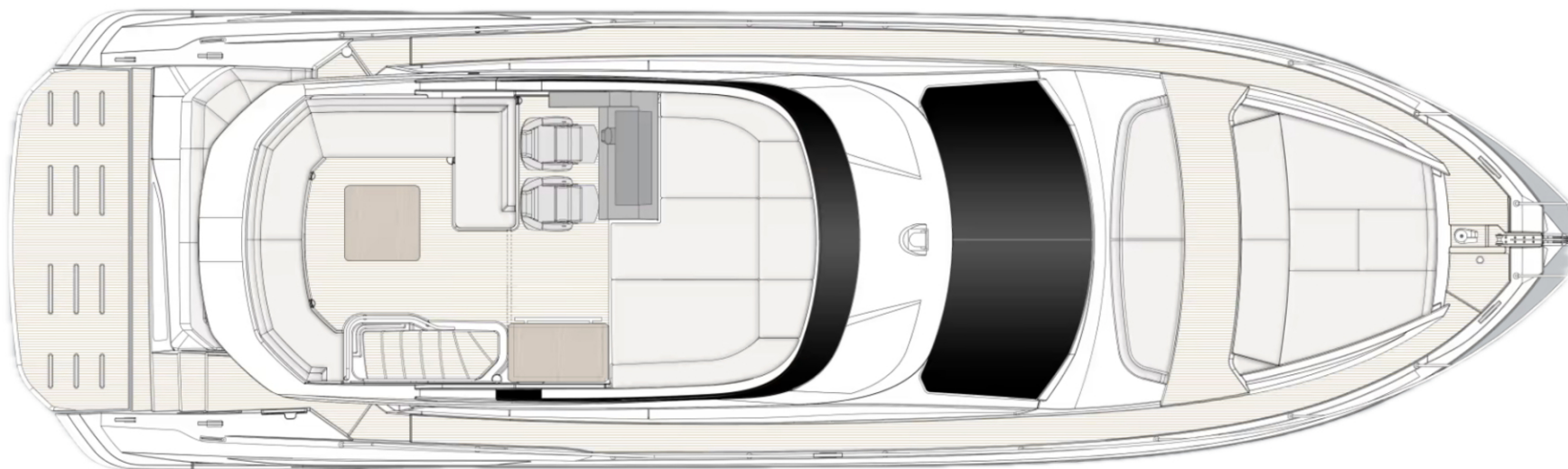
GUEST CABIN

M/Y FLY 53



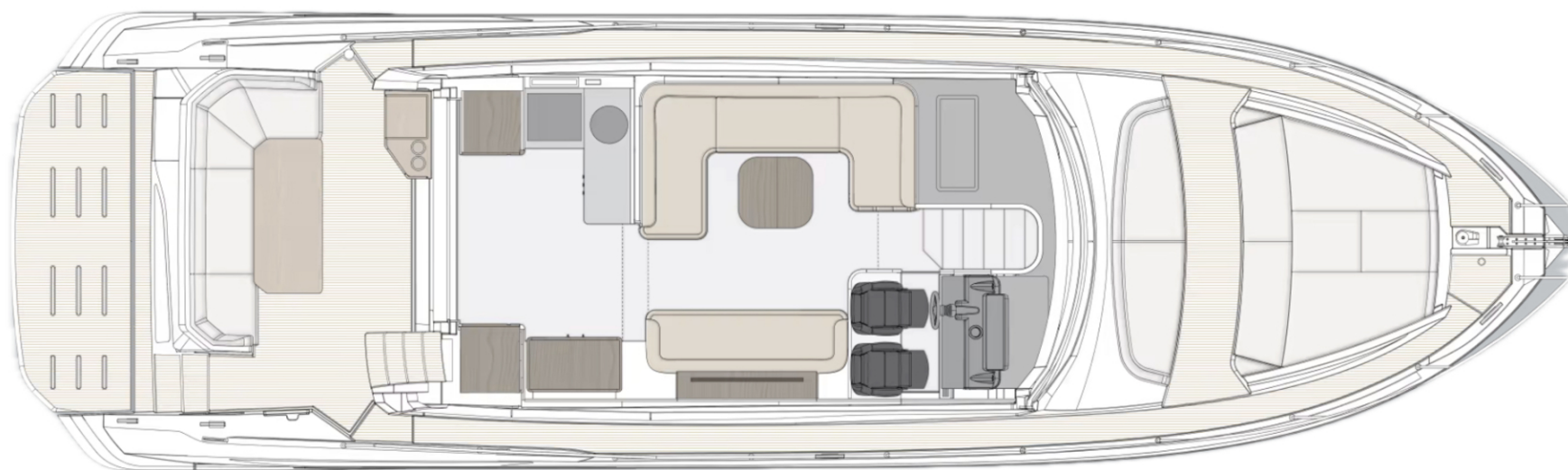
# General Arrangement





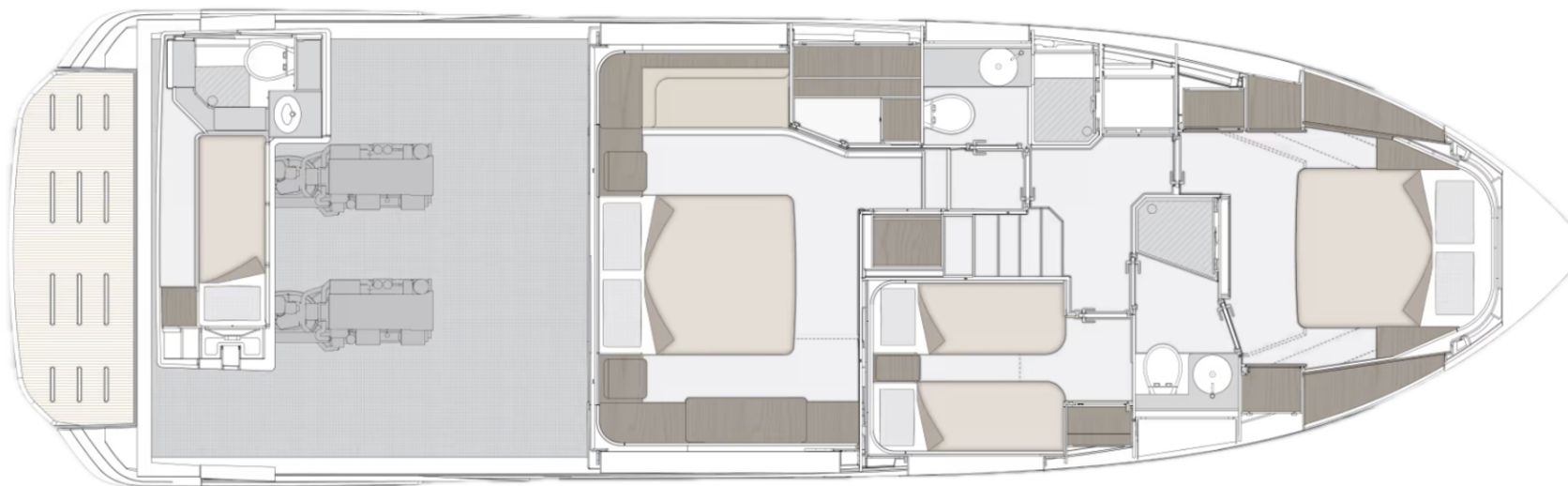
FLYBRIDGE





MAIN DECK





---

---

---

## LOWER DECK





## KIRILL KUATOV

+377 607 93 15 20

+39 333 576 44 44

 [Send e-mail](#)

 WhatsApp

 Telegram

[More information about M/Y FLY 53 at www.nauyachts.com](http://www.nauyachts.com)

[Watch video](#)