



New Build

NAU  
YACHTS

7X

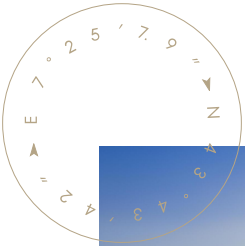
MOTOR YACHT   PERSHING 21.11M   2028

FLAG -



MOTOR YACHT

## 7X



**Pershing 7X** is an **X-Generation** motor yacht featuring the unmistakable design by Fulvio De Simoni, engineered with a strong focus on speed, precision handling, and weight reduction. The extensive use of carbon fiber in both the hull and superstructure delivers exceptional rigidity and performance without compromising comfort or safety. Surface drives combined with an advanced steer-by-wire system and gyroscopic stabilizers ensure outstanding stability and full control at high speeds.

Powered by three Volvo Penta engines with IPS propulsion, the yacht reaches speeds in excess of 50 knots while maintaining confident, predictable behavior across a wide operating range. The layout accommodates guests in three cabins, each with its own en-suite bathroom, while the interior is styled in a contemporary manner with an emphasis on light, ergonomics, and practicality.

**Pershing 7X** is a compact, highly technological maxi coupé designed for owners who value dynamic performance, engineering precision, and the unmistakable character of the Pershing brand - without compromise.

[see more information about M/Y 7X at www.nauyachts.com](http://www.nauyachts.com)

# SPECIFICATION

SHIPYARD, MODEL	Pershing 7X
DELIVERY AT THE SHIPYARD	2028
LENGTH	21.11 m
WATERLINE LENGTH	16.13 m
HULL CONFIGURATION	PLANING
BEAM	5.35 m
RANGE	300
DRAFT	1.52 m
GROSS TONNAGE	35 GT
YACHT CLASS	N/A
CABINS	3+1
MASTER CABIN	LOWER DECK
GUESTS	6
BERTHS	6+2
CREW	2
HEADS	3+1

EXTERIOR DESIGN	FULVIO DE SIMONI
INTERIOR DESIGN	FULVIO DE SIMONI
HULL	CARBON FIBRE
SUPERSTRUCTURE	CARBON FIBRE
ENGINES	2 x MAN V12 1800 h.p.
TYPE OF DRIVE	SURFACE DRIVE
ENGINE HOURS	N/A
MAXIMUM SPEED	50 kn
CRUISING SPEED	42 kn
FUEL CONSUMPTION AT ECONOMICAL SPEED	N/A
FUEL	3600 l
GREY WATER	N/A
BLACK WATER	N/A
FRESH WATER	800 l
DISPLACEMENT	42

[see more information about M/Y 7X at www.nauyachts.com](http://www.nauyachts.com)





EXTERIOR PERSHING 7X

M/Y 7X





EXTERIOR PERSHING 7X

M/Y 7X





EXTERIOR PERSHING 7X

M/Y 7X





EXTERIOR PERSHING 7X

M/Y 7X





EXTERIOR PERSHING 7X

M/Y 7X





EXTERIOR PERSHING 7X

M/Y 7X





EXTERIOR PERSHING 7X

M/Y 7X





EXTERIOR PERSHING 7X

M/Y 7X





STARBOARD

M/Y 7X





BOW AREA

M/Y 7X





COCKPIT DINING AREA

M/Y 7X





MAIN SALON LOUNGE AREA

M/Y 7X





MAIN SALON LOUNGE AREA

M/Y 7X





MAIN SALON LOUNGE AREA

M/Y 7X





MAIN HELM STATION

M/Y 7X





GALLEY

M/Y 7X





MASTER CABIN

M/Y 7X





MASTER CABIN

M/Y 7X





MASTER BATHROOM

M/Y 7X





VIP CABIN

M/Y 7X





VIP BATHROOM

M/Y 7X





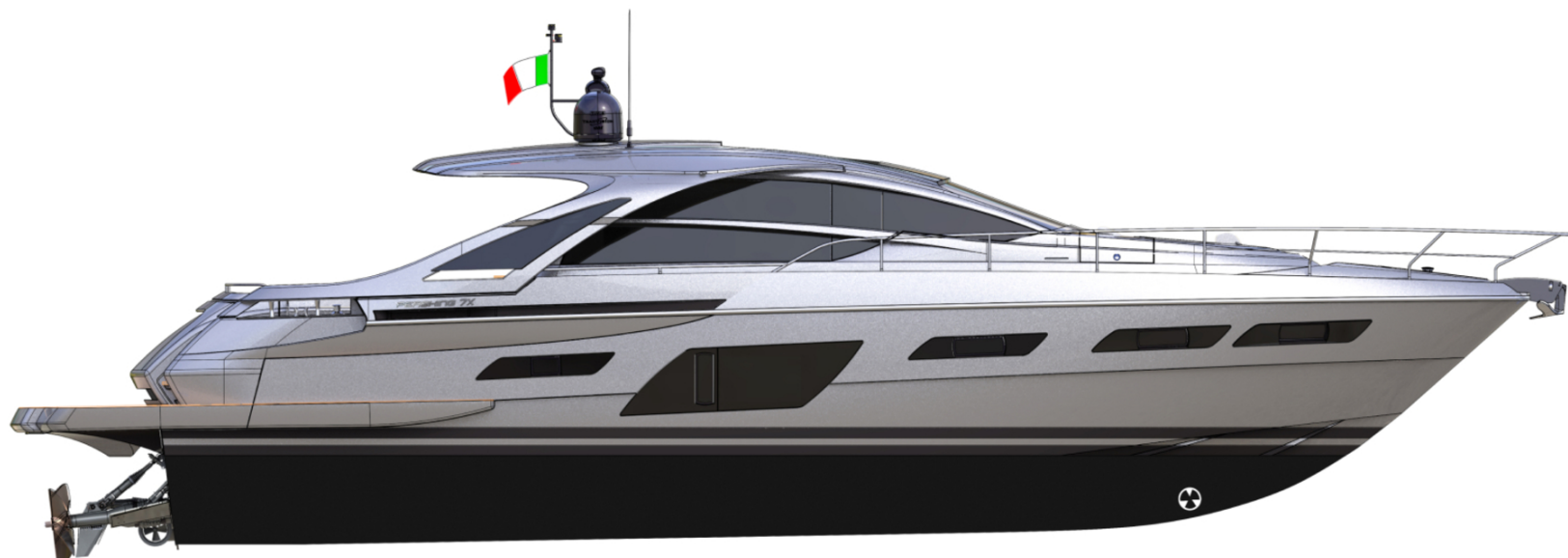
GUEST CABIN

M/Y 7X



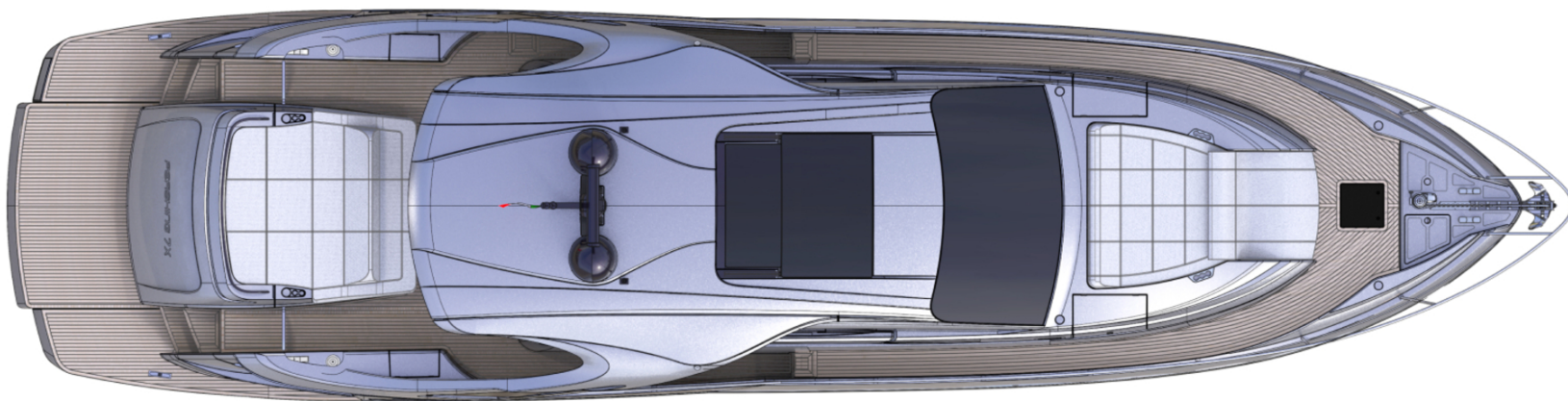
# General Arrangement





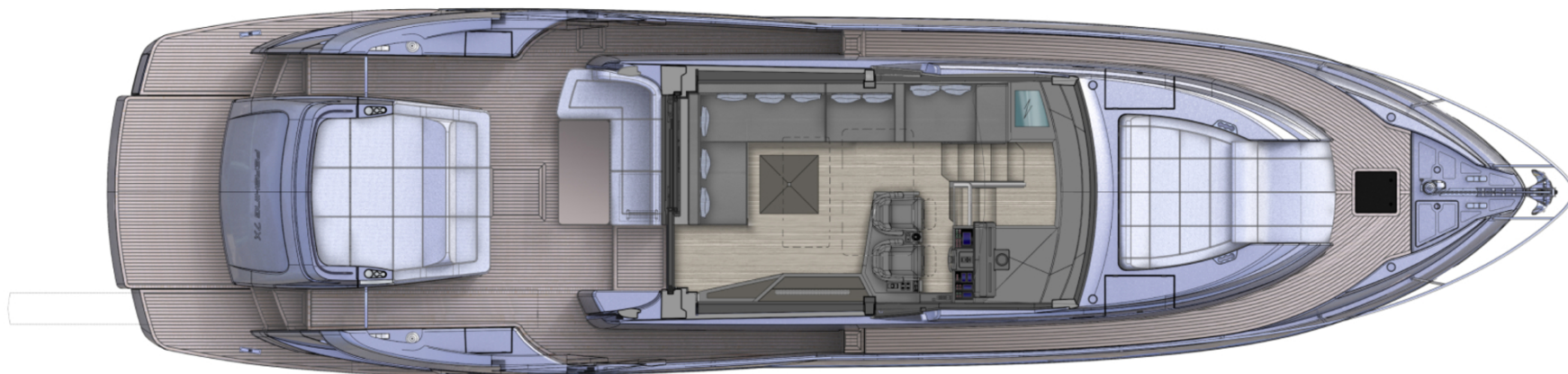
PROFILE





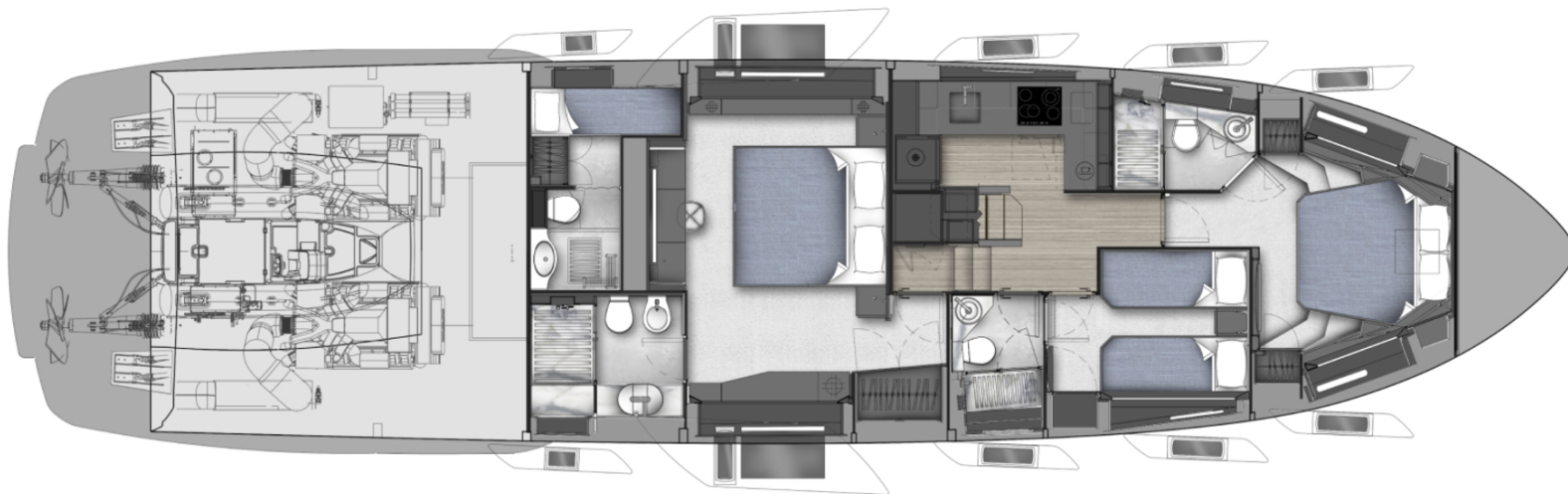
FLYBRIDGE





MAIN DECK





---

---

---

## LOWER DECK





KIRILL KUATOV

+377 607 93 15 20

+39 333 576 44 44

 [Send e-mail](#)

 WhatsApp

 Telegram

[More information about M/Y 7X at www.nauyachts.com](http://www.nauyachts.com)

[Watch video](#)