



Brokerage

NAU
YACHTS

AMUSSAY

MOTOR YACHT PRINCESS 19.34M 2020

€1,620,000
FLAG -

MOTOR YACHT

AMUSSAY



AMUSSAY, a 2020 **Princess F62**, is a 19.34-metre cruising motor yacht designed for comfortable onboard living and effortless coastal cruising. She accommodates up to six guests across a full-beam master stateroom on the lower deck, a forward VIP cabin and a convertible twin cabin. A dedicated, air-conditioned crew cabin for two is located in the bow, ensuring smooth service and enhanced privacy for guests. Powered by twin Volvo D13-1000 engines (1,000 hp each, 967 hours as of August 2025), **AMUSSAY** reaches a top speed of approximately 32 knots and cruises comfortably at around 30 knots. Her engine room is equipped with an Onan 19 kW generator with water cooling (2,409 hours), a reverse-cycle air-conditioning system, Rainman watermaker, Seakeeper stabiliser, bow and stern thrusters, fire-suppression systems and comprehensive automatic monitoring.

Exterior teak decks create a cohesive flow between the yacht's outdoor spaces. The flybridge, protected by a hardtop, features a bar, BBQ, U-shaped seating and an aft sunpad. The foredeck offers adjustable sunbeds, a table and a carbon sunshade - ideal for relaxed afternoons at anchor. A hydraulic swim platform, passerelle, and deck shower enhance convenience at the water's edge, while underwater lights add ambience in the evening.

AMUSSAY comes equipped with a Williams 345 Jet Tender, two SUP boards, fishing gear and a towable tube, offering a range of water activities for guests of all ages.

see more information about M/Y AMUSSAY at www.nauyachts.com

SPECIFICATION

SHIPYARD, MODEL	Princess F62
BUILT	2020
LENGTH	19.34 m
WATERLINE LENGTH	16.11 m
HULL CONFIGURATION	PLANING
BEAM	5.03 m
RANGE	325
DRAFT	1.48 m
GROSS TONNAGE	49 GT
YACHT CLASS	RINA
CABINS	3+1
MASTER CABIN	LOWER DECK
GUESTS	6
BERTHS	6+2
CREW	2
HEADS	3+1

EXTERIOR DESIGN	PRINCESS YACHTS
INTERIOR DESIGN	PRINCESS YACHTS
HULL	GRP
SUPERSTRUCTURE	GRP
ENGINES	2 x Volvo Penta 940 h.p.
TYPE OF DRIVE	VOLVO PENTA IPS
ENGINE HOURS	967 h
MAXIMUM SPEED	32 kn
CRUISING SPEED	30 kn
FUEL CONSUMPTION AT ECONOMICAL SPEED	N/A
FUEL	4500 l
GREY WATER	120 l
BLACK WATER	120 l
FRESH WATER	800 l
DISPLACEMENT	29

[see more information about M/Y AMUSSAY at www.nauyachts.com](http://www.nauyachts.com)



EXTERIOR PRINCESS F62 2020 MY AMUSSAY

M/Y AMUSSAY



EXTERIOR PRINCESS F62 2020 MY AMUSSAY

M/Y AMUSSAY



EXTERIOR PRINCESS F62 2020 MY AMUSSAY

M/Y AMUSSAY



EXTERIOR PRINCESS F62 2020 MY AMUSSAY

M/Y AMUSSAY



EXTERIOR PRINCESS F62 2020 MY AMUSSAY

M/Y AMUSSAY



EXTERIOR PRINCESS F62 2020 MY AMUSSAY

M/Y AMUSSAY



FLYBRIDGE LOUNGE AREA

M/Y AMUSSAY



SECOND HELM STATION

M/Y AMUSSAY



BOW LOUNGE AREA

M/Y AMUSSAY



BOW LOUNGE AREA

M/Y AMUSSAY



COCKPIT DINING AREA

M/Y AMUSSAY



MAIN SALON LOUNGE AREA

M/Y AMUSSAY



MAIN SALON LOUNGE AREA

M/Y AMUSSAY



MAIN SALON DINING AREA

M/Y AMUSSAY



MAIN HELM STATION

M/Y AMUSSAY



MASTER CABIN

M/Y AMUSSAY



MASTER CABIN

M/Y AMUSSAY



MASTER BATHROOM

M/Y AMUSSAY



VIP CABIN

M/Y AMUSSAY



VIP BATHROOM

M/Y AMUSSAY



GUEST CABIN

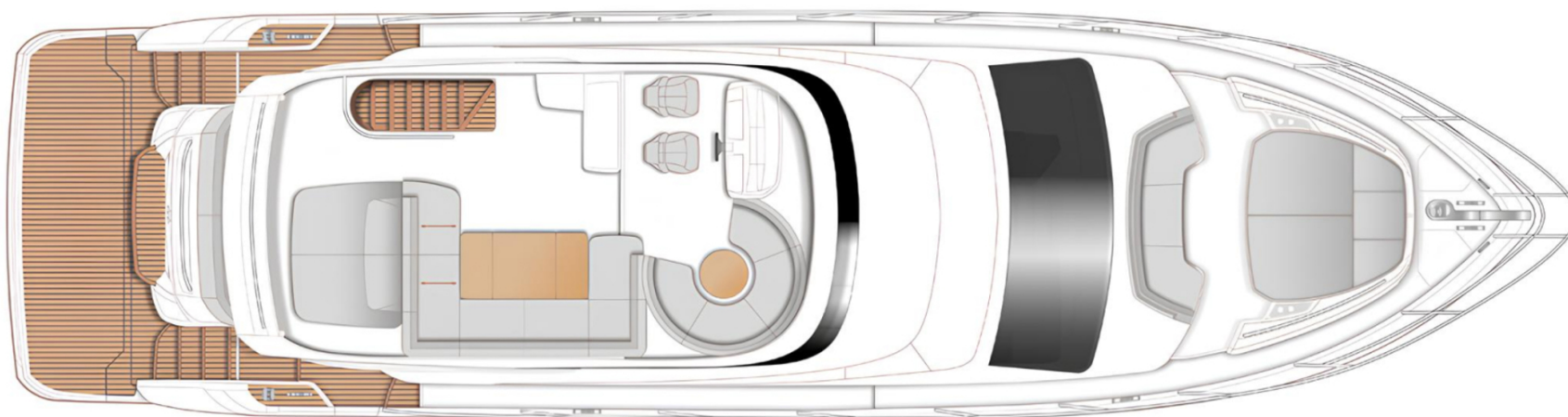
M/Y AMUSSAY



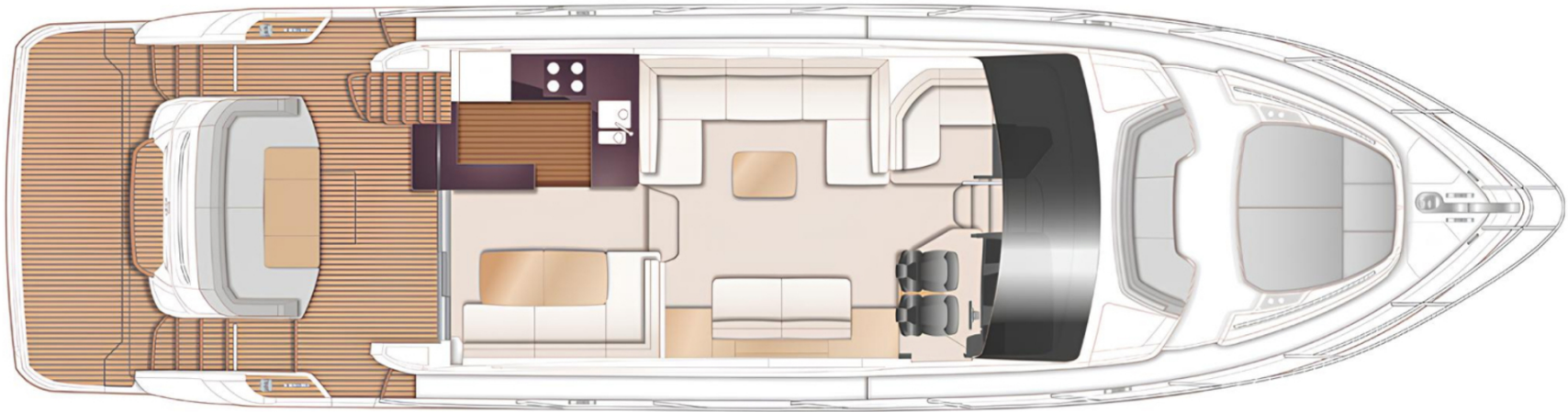
GUEST BATHROOM

M/Y AMUSSAY

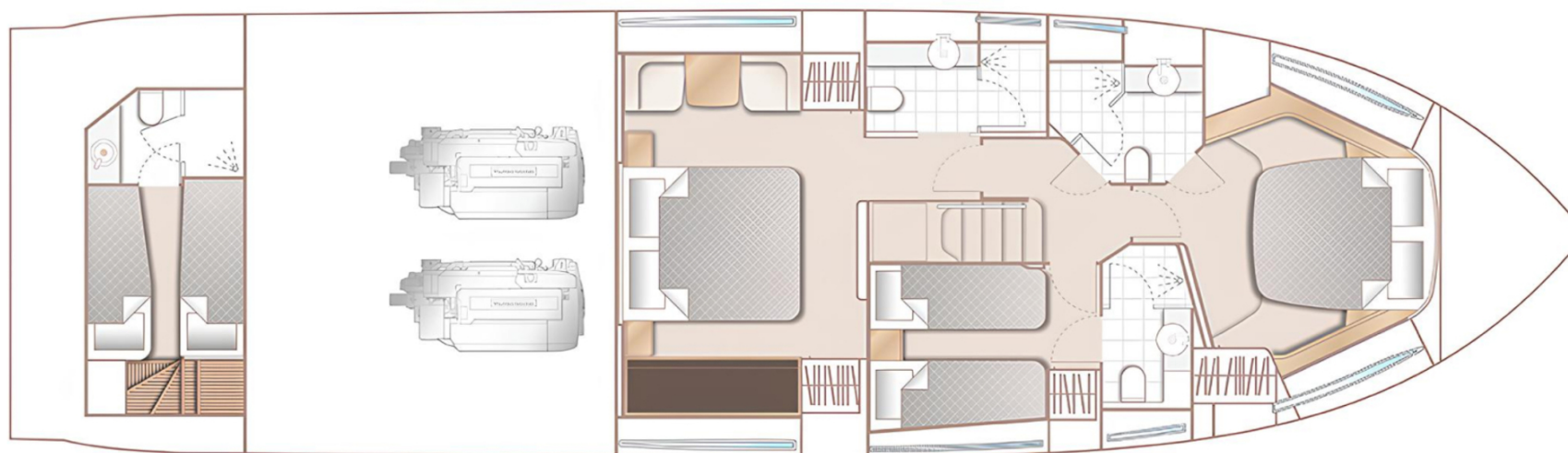
General Arrangement



FLYBRIDGE



MAIN DECK



LOWER DECK



KIRILL KUATOV

+377 607 93 15 20

+39 333 576 44 44

 [Send e-mail](#)

 WhatsApp

 Telegram