



Brokerage

NAU  
YACHTS

NO RUSH

MOTOR YACHT MANGUSTA (OVERMARINE) 49.95M 2023

€33,500,000  
FLAG - ITALY

MOTOR YACHT

# NO RUSH



**NO RUSH** is a 49.95-metre **Mangusta 165 REV**, delivered by **Overmarine** in 2023. Designed with a strong focus on high performance and smart spatial efficiency, she pairs four MTU 16V 2000 M96L engines with Rolls-Royce waterjets, delivering a top speed of 35 knots and a remarkably stable cruising speed of 30 knots. Her composite hull and waterjet configuration enhance manoeuvrability, reduce vibration, and ensure a smooth ride even at high speeds. A seamless teak deck connects the aft lounge area, wide side decks, and the open foredeck, where guests will find a private Jacuzzi with panoramic views. Multiple sunbathing, dining, and social spaces are spread across the outdoor decks, creating versatile options for relaxation and entertainment. Interiors by Marcello Pianosì reflect a contemporary aesthetic defined by clean lines, warm wood tones, and soft textures. Accommodation is provided for 10 guests in five suites, including a main-deck master suite offering exceptional privacy. Four guest cabins are located on the lower deck, while the crew quarters forward allow discreet service without intruding on guest areas. Additional amenities include a fully equipped gym and steam room, offering guests wellness and recreational options during longer stays on board. Combining speed, modern design, and a custom-crafted interior, **NO RUSH** delivers a versatile platform for weekend escapes, extended cruising, and dynamic, fast-paced itineraries.

[see more information about M/Y NO RUSH at www.nauyachts.com](http://www.nauyachts.com)

# SPECIFICATION

SHIPYARD, MODEL	Mangusta (Overmarine) 165 REV
BUILT	2023
LENGTH	49.95 m
WATERLINE LENGTH	42.98 m
HULL CONFIGURATION	PLANING
BEAM	9.29 m
RANGE	650
DRAFT	2 m
GROSS TONNAGE	499 GT
YACHT CLASS	RINA
CABINS	5+5
MASTER CABIN	MAIN DECK
GUESTS	10
BERTHS	10+9
CREW	9
HEADS	6+5

EXTERIOR DESIGN	LOBANOV DESIGN
INTERIOR DESIGN	MARCELLO PIANOSI
HULL	GRP
SUPERSTRUCTURE	GRP
ENGINES	4 x MTU 16V 2000 M96L
TYPE OF DRIVE	JET
ENGINE HOURS	446 h
MAXIMUM SPEED	35 kn
CRUISING SPEED	30 kn
FUEL CONSUMPTION AT ECONOMICAL SPEED	N/A
FUEL	40000 l
GREY WATER	N/A
BLACK WATER	N/A
FRESH WATER	4000 l
DISPLACEMENT	310

[see more information about M/Y NO RUSH at www.nauyachts.com](http://www.nauyachts.com)





EXTERIOR MANGUSTA 165 REV 2023 MY NO  
RUSH

M/Y NO RUSH





EXTERIOR MANGUSTA 165 REV 2023 MY NO  
RUSH

M/Y NO RUSH





EXTERIOR MANGUSTA 165 REV 2023 MY NO  
RUSH

M/Y NO RUSH





AFT AREA

M/Y NO RUSH





BEACH CLUB

M/Y NO RUSH





BEACH CLUB

M/Y NO RUSH





AFT MAIN DECK DINING AREA

M/Y NO RUSH





AFT MAIN DECK DINING AREA

M/Y NO RUSH





AFT MAIN DECK DINING AREA

M/Y NO RUSH





AFT MAIN DECK DINING AREA

M/Y NO RUSH





UPPER DECK

M/Y NO RUSH





UPPER DECK LOUNGE AREA

M/Y NO RUSH





UPPER DECK LOUNGE AREA

M/Y NO RUSH





UPPER DECK BAR

M/Y NO RUSH





BOW LOUNGE AREA

M/Y NO RUSH





BOW LOUNGE AREA

M/Y NO RUSH





MAIN SALON DINING AREA

M/Y NO RUSH





MAIN SALON DINING AREA

M/Y NO RUSH





MAIN SALON DINING AREA

M/Y NO RUSH





MASTER CABIN

M/Y NO RUSH





MASTER CABIN

M/Y NO RUSH





MASTER CABIN

M/Y NO RUSH





MASTER BATHROOM

M/Y NO RUSH





MASTER BATHROOM

M/Y NO RUSH





MASTER BATHROOM

M/Y NO RUSH





CHILDREN'S CABIN

M/Y NO RUSH





VIP CABIN

M/Y NO RUSH









VIP BATHROOM

M/Y NO RUSH





WELLNESS AREA

M/Y NO RUSH





WELLNESS AREA

M/Y NO RUSH





WELLNESS AREA

M/Y NO RUSH



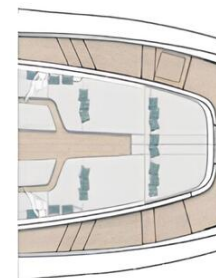
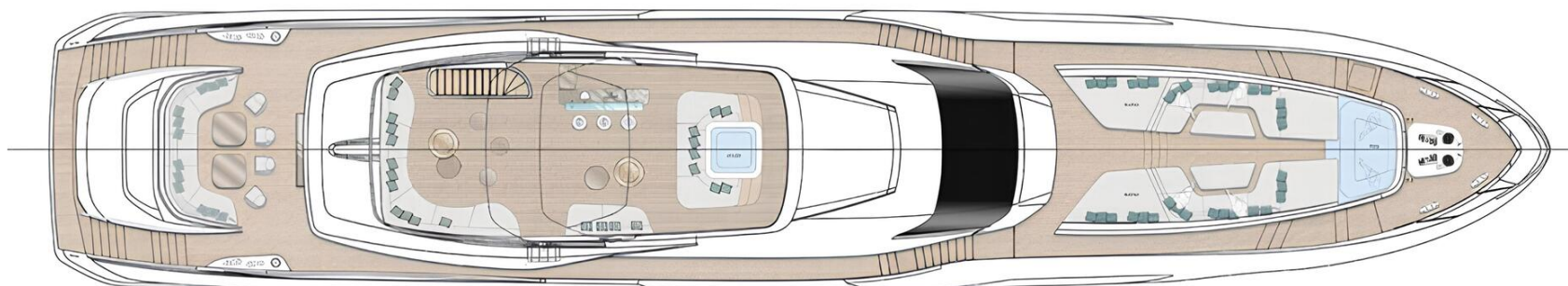
# General Arrangement





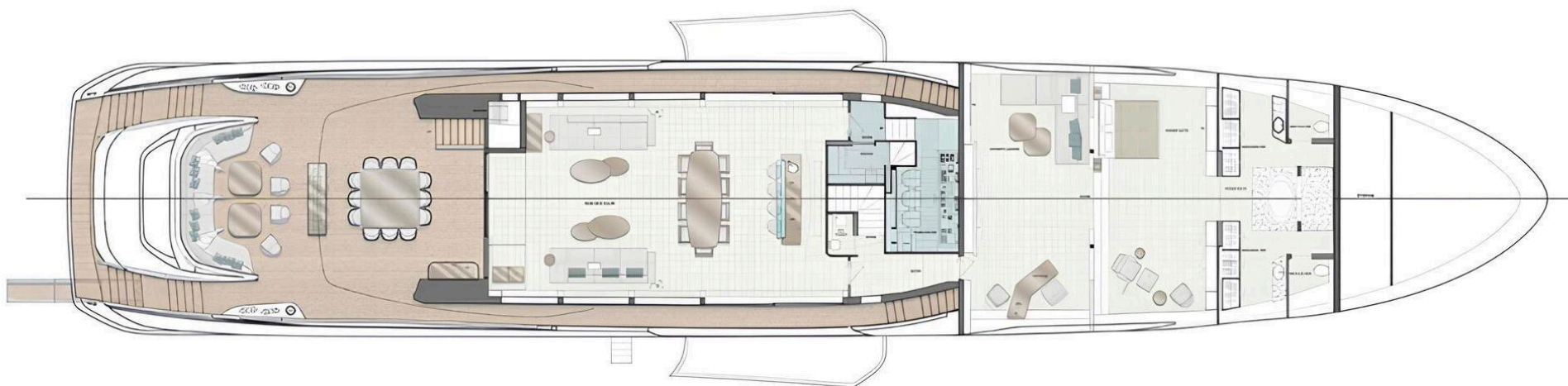
PROFILE





UPPER DECK





MAIN DECK





LOWER DECK





KIRILL KUATOV

+377 607 93 15 20

+39 333 576 44 44

 [Send e-mail](#)

 WhatsApp

 Telegram