



Brokerage

NAU
YACHTS

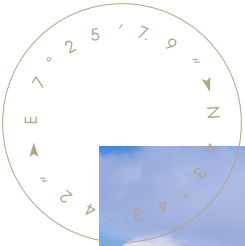
ICE

MOTOR YACHT HORIZON 27.19M 2019

€6,850,000 (VAT paid)
FLAG - SWISS

MOTOR YACHT

ICE



ICE is a 27.19 m **Horizon FD87** motor yacht delivered in 2019, offering a rare blend of innovative design, thoughtful layout and exceptional comfort. Privately owned from new, VAT paid in the EU and showing minimal engine hours, she is the only **Horizon FD87** built to European specification currently on the market. With a 2023 Williams 395 Jet Tender included, she is presented in true turnkey condition.

Designed inside and out by **Horizon Yachts**, **ICE** features a GRP hull and superstructure with teak decks. Her open-plan main saloon seamlessly connects to the galley and, via sliding glass doors, to the aft deck, creating one large convivial space. A notable highlight for a yacht of this size, the full-beam master suite is forward on the main deck, while four additional guest cabins comfortably accommodate up to eight guests. Two crew cabins for four are located aft, ensuring excellent service and guest privacy.

On the flybridge, guests can enjoy a fully enclosed lounge and an open-air area with a well-equipped bar and dining space – the perfect setting for evening cocktails or relaxed gatherings.

Powered by twin MTU 10V 2000 M96L diesel engines of 1,600 hp each, **ICE** cruises comfortably at 12 knots and reaches a top speed of 18 knots. With fuel capacity of 13,170 litres and water capacity of 1,500 litres, she offers an excellent range for extended cruising.

[see more information about M/Y ICE at www.nauyachts.com](http://www.nauyachts.com)

SPECIFICATION

SHIPYARD, MODEL	Horizon FD87
BUILT	2019
LENGTH	27.19 m
WATERLINE LENGTH	24.15 m
HULL CONFIGURATION	SEMI-DISPLACEMENT
BEAM	7.1 m
RANGE	1200
DRAFT	1.9 m
GROSS TONNAGE	187 GT
YACHT CLASS	BUREAU VERITAS
CABINS	5+2
MASTER CABIN	MAIN DECK
GUESTS	10
BERTHS	10+4
CREW	4
HEADS	5+1

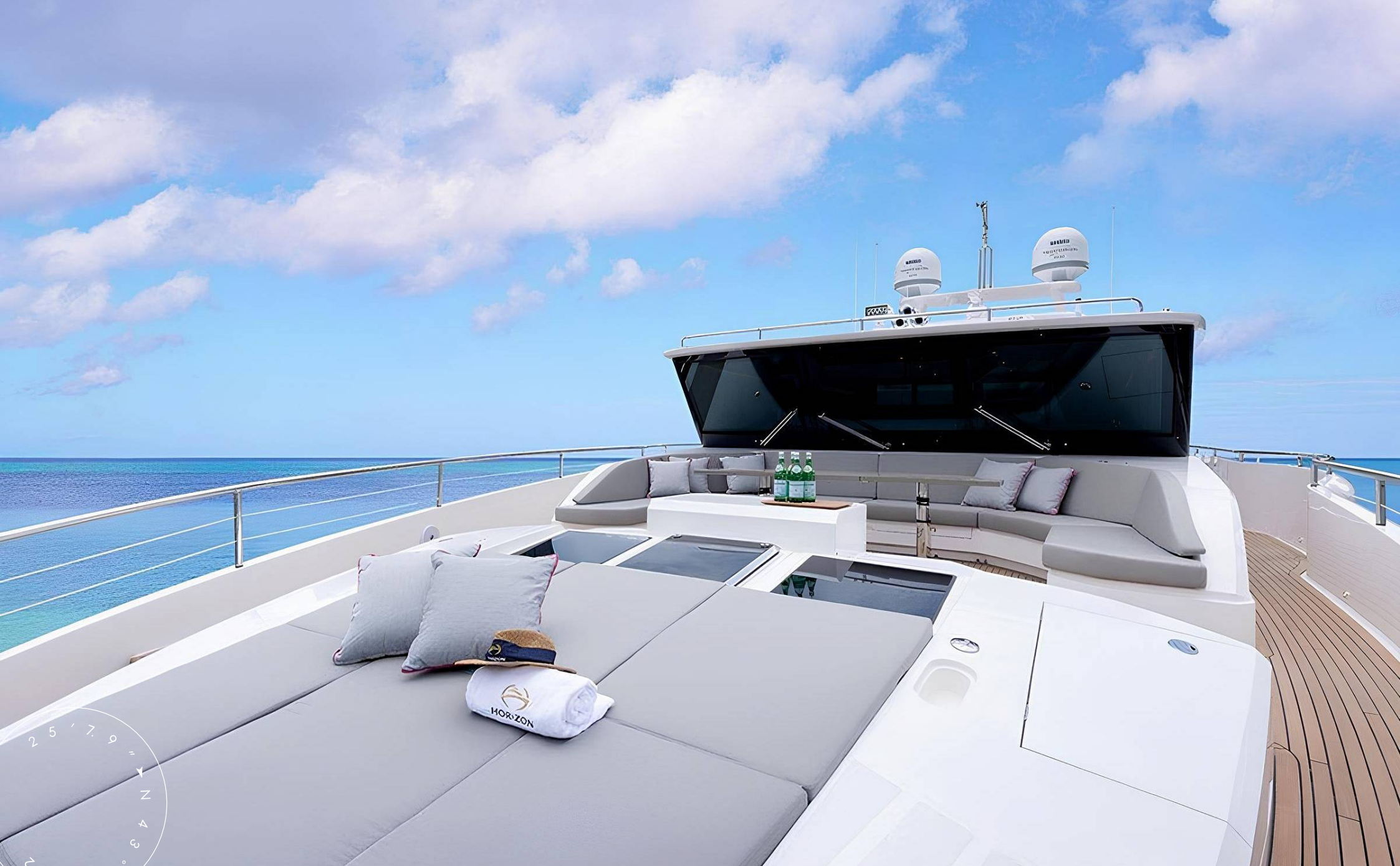
EXTERIOR DESIGN	HORIZON YACHTS
INTERIOR DESIGN	HORIZON YACHTS
HULL	GRP
SUPERSTRUCTURE	GRP
ENGINES	2 x MTU 10V 2000 M96L 1600 h.p.
TYPE OF DRIVE	SHAFT LINE
ENGINE HOURS	820 h
MAXIMUM SPEED	18 kn
CRUISING SPEED	12 kn
FUEL CONSUMPTION AT ECONOMICAL SPEED	~ 77 l/h
FUEL	13170 l
GREY WATER	757 l
BLACK WATER	757 l
FRESH WATER	1500 l
DISPLACEMENT	95

[see more information about M/Y ICE at www.nauyachts.com](http://www.nauyachts.com)



EXTERIOR HORIZON FD87 2019 MY ICE

M/Y ICE



BOW SUNBATHING AREA

M/Y ICE



BOW LOUNGE AREA

M/Y ICE



BOW LOUNGE AREA

M/Y ICE



PORT SIDE

M/Y ICE



FLYBRIDGE BAR

M/Y ICE



FLYBRIDGE BAR

M/Y ICE



COCKPIT SEATING AREA

M/Y ICE



COCKPIT SEATING AREA

M/Y ICE



COCKPIT SEATING AREA

M/Y ICE



MAIN SALON LOUNGE AREA

M/Y ICE



MAIN SALON LOUNGE AREA

M/Y ICE



MAIN SALON DINING AREA

M/Y ICE



MAIN SALON DINING AREA

M/Y ICE



MAIN SALON DINING AREA

M/Y ICE



GALLEY

M/Y ICE



GALLEY

M/Y ICE



GALLEY

M/Y ICE



MASTER CABIN

M/Y ICE



MASTER BATHROOM

M/Y ICE



LOWER DECK LOBBY

M/Y ICE



VIP CABIN

M/Y ICE



VIP CABIN

M/Y ICE



VIP BATHROOM

M/Y ICE



VIP CABIN

M/Y ICE



VIP BATHROOM

M/Y ICE



VIP CABIN

M/Y ICE



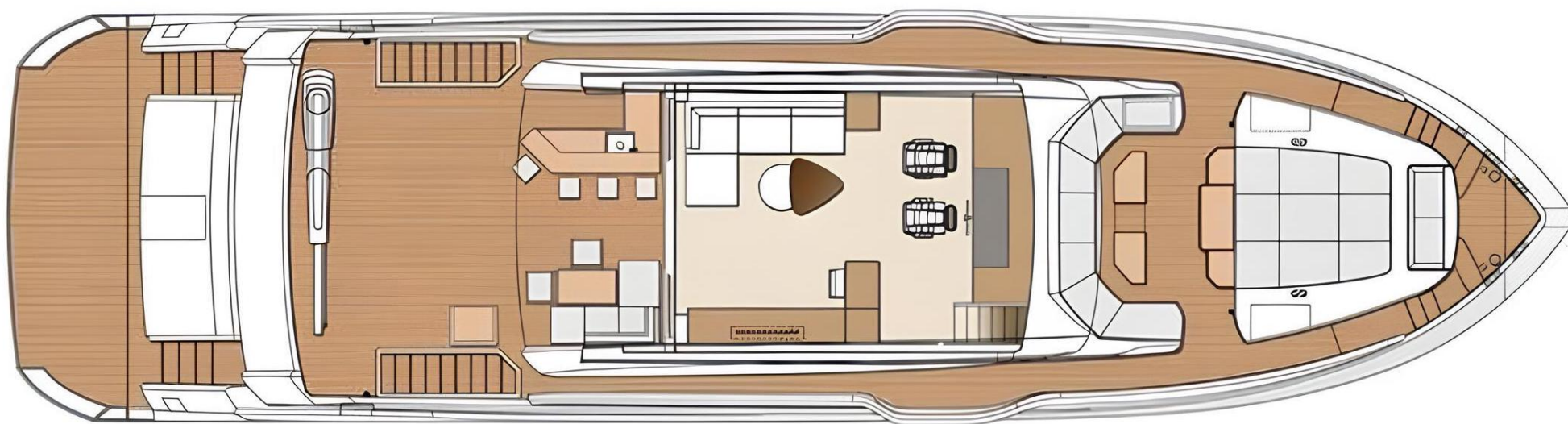
VIP BATHROOM

M/Y ICE

General Arrangement



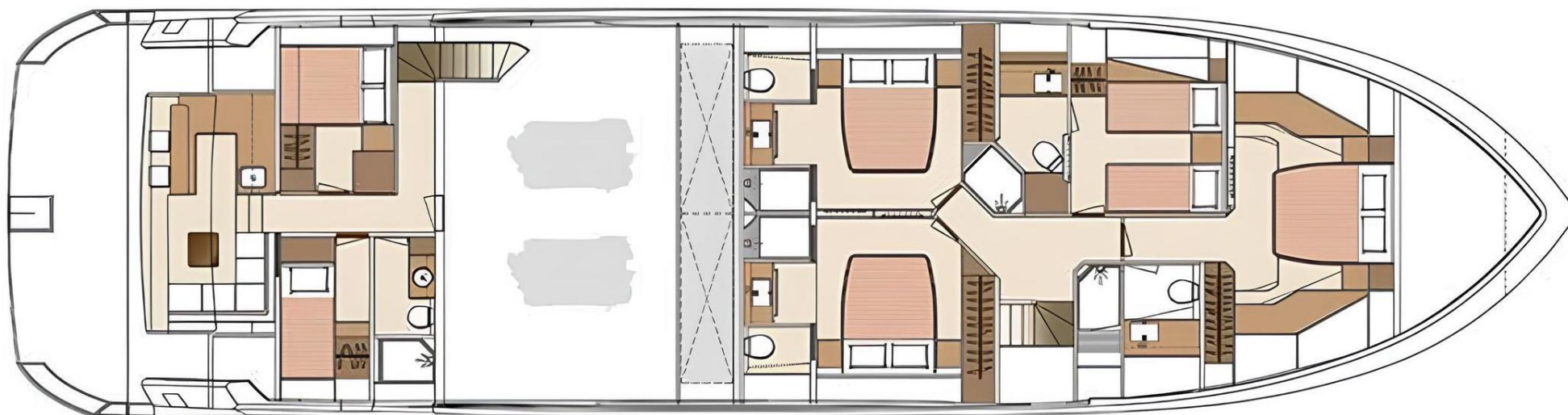
PROFILE



FLYBRIDGE



MAIN DECK



LOWER DECK



KIRILL KUATOV

+377 607 93 15 20

+39 333 576 44 44

 [Send e-mail](#)

 WhatsApp

 Telegram