



Brokerage

NAU
YACHTS

LADY LARISA

MOTOR YACHT SANLORENZO 26.7M 2018

€5,200,000 (VAT paid)
FLAG - MALTA

MOTOR YACHT

LADY LARISA



LADY LARISA is a 26.7-metre **Sanlorenzo SX88**, one of the few yachts in her class featuring a full-beam owner's suite on the main deck. Her exterior design is by Officina Italiana Design, with interiors by Piero Lissoni, combining contemporary style with functional luxury.

She accommodates up to eight guests across a full-beam main-deck master, a VIP cabin, and two twin guest cabins on the lower deck. Crew quarters comprise two cabins for four crew members, with a separate entrance to the galley to ensure seamless service.

Powered by three Volvo Penta IPS 1050 engines, **LADY LARISA** cruises at 20 knots with a top speed of 23 knots, offering a range of 1,000 nautical miles at 10 knots. Additional battery capacity allows up to 24 hours at anchor without running the generators.

Decks are finished in teak and feature multiple relaxation areas, al fresco dining, and sunbathing zones. Her shallow 1.7-metre draft provides access to secluded bays and anchorages. Launched in 2021, the yacht is professionally crewed and meticulously maintained, ready for immediate enjoyment.

see more information about M/Y LADY LARISA at www.nauyachts.com

SPECIFICATION

SHIPYARD, MODEL	Sanlorenzo SX88
BUILT	2018
LENGTH	26.7 m
WATERLINE LENGTH	24.5 m
HULL CONFIGURATION	PLANING
BEAM	7.2 m
RANGE	1000
DRAFT	1.7 m
GROSS TONNAGE	131 GT
YACHT CLASS	RINA
CABINS	4+2
MASTER CABIN	MAIN DECK
GUESTS	8
BERTHS	8+4
CREW	4
HEADS	4+1

EXTERIOR DESIGN	OFFICINA ITALIANA DESIGN
INTERIOR DESIGN	PIERO LISSONI
HULL	GRP
SUPERSTRUCTURE	GRP
ENGINES	3 x Volvo Penta IPS 800 h.p.
TYPE OF DRIVE	VOLVO PENTA IPS
ENGINE HOURS	830 h
MAXIMUM SPEED	23 kn
CRUSING SPEED	20 kn
FUEL CONSUMPTION AT ECONOMICAL SPEED	~ 660 l/h
FUEL	13750 l
GREY WATER	N/A
BLACK WATER	N/A
FRESH WATER	2000 l
DISPLACEMENT	90

[see more information about M/Y LADY LARISA at www.nauyachts.com](http://www.nauyachts.com)



EXTERIOR SANLORENZO SX88 2018 MY LADY
LARISA

M/Y LADY LARISA



EXTERIOR SANLORENZO SX88 2018 MY LADY
LARISA

M/Y LADY LARISA



EXTERIOR SANLORENZO SX88 2018 MY LADY
LARISA

M/Y LADY LARISA



EXTERIOR SANLORENZO SX88 2018 MY LADY
LARISA

M/Y LADY LARISA



COCKPIT SEATING AREA

M/Y LADY LARISA



FLYBRIDGE GRILL

M/Y LADY LARISA



FLYBRIDGE LOUNGE AREA

M/Y LADY LARISA



FLYBRIDGE LOUNGE AREA

M/Y LADY LARISA



BOW LOUNGE AREA

M/Y LADY LARISA



BOW LOUNGE AREA

M/Y LADY LARISA



BOW LOUNGE AREA

M/Y LADY LARISA



BOW LOUNGE AREA

M/Y LADY LARISA



MAIN SALON LOUNGE AREA

M/Y LADY LARISA



MAIN SALON LOUNGE AREA

M/Y LADY LARISA



MAIN SALON LOUNGE AREA

M/Y LADY LARISA



MAIN SALON LOUNGE AREA

M/Y LADY LARISA



MASTER CABIN

M/Y LADY LARISA



MASTER CABIN

M/Y LADY LARISA



MASTER BATHROOM

M/Y LADY LARISA



VIP CABIN

M/Y LADY LARISA



VIP CABIN

M/Y LADY LARISA



VIP BATHROOM

M/Y LADY LARISA



GUEST CABIN

M/Y LADY LARISA



GUEST BATHROOM

M/Y LADY LARISA



GALLEY

M/Y LADY LARISA



CREW AREA

M/Y LADY LARISA



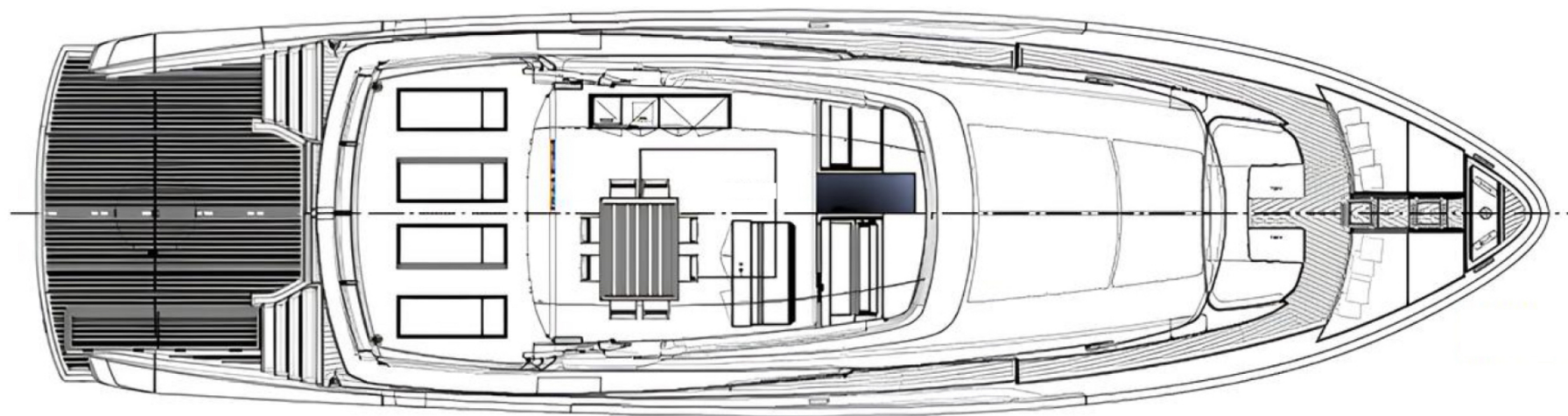
MAIN HELM STATION

M/Y LADY LARISA

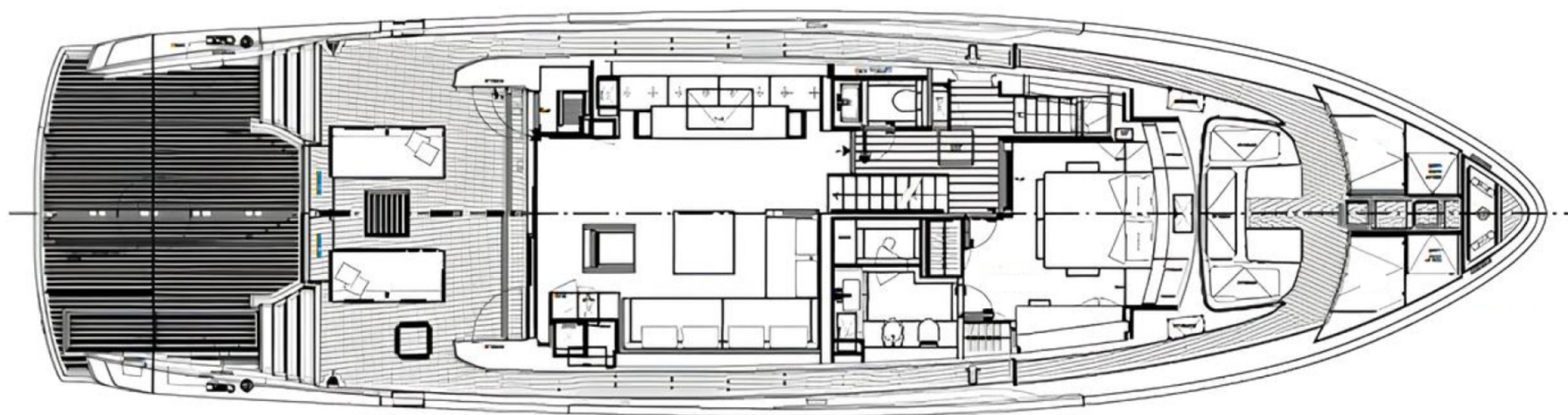
General Arrangement



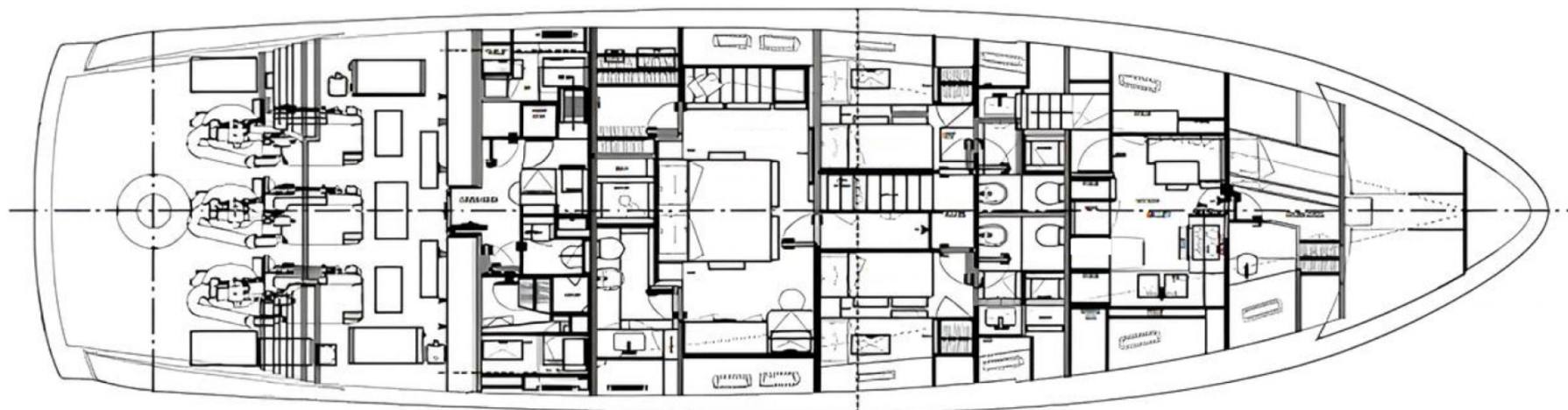
PROFILE



FLYBRIDGE



MAIN DECK



LOWER DECK



KIRILL KUATOV

+377 607 93 15 20

+39 333 576 44 44

 [Send e-mail](#)

 WhatsApp

 Telegram