



Brokerage

NAU
YACHTS

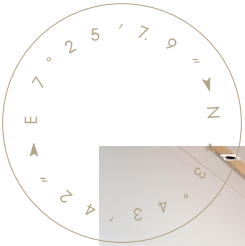
PALMAX

MOTOR YACHT AZIMUT 29.48M 2022

€9,500,000 (VAT paid)
FLAG - MALTA

MOTOR YACHT

PALMAX



PALMAX, the first hull of the **Azimut Magellano 30 Metri** series, was launched in 2022 and awarded the World Yacht Trophy for Best Layout (24–30 m). She combines a distinctive exterior by Ken Freivokh with refined interiors by Vincenzo De Cotiis, blending style, comfort, and functionality.

Outdoor areas are designed for relaxation and entertaining, including a spacious flybridge lounge, forward sunbathing zone, and aft cockpit dining area. A hydraulic swim platform provides easy access to the water and water toys.

Powered by twin MAN V12-1900 engines with 715 hours each, **PALMAX** cruises comfortably at 12 knots with a top speed of 20 knots. Her 1,200-nautical-mile range, combined with RINA certification, ensures reliability and safety, making her ideal for both coastal cruising and longer passages.

Accommodation is for up to 10 guests in five spacious cabins with panoramic windows and high-quality finishes. The main-deck owner's suite is complemented by two VIP cabins and two guest cabins on the lower deck. A crew of five, accommodated in three separate cabins, ensures attentive service.

Privately owned since launch, **PALMAX** has been meticulously maintained and is ready for immediate adventures, whether a summer cruise in the Mediterranean or exploring more distant exotic destinations. With her award-winning layout, elegant exterior, and impeccable interior, **PALMAX** is a truly exceptional yacht.

see more information about M/Y PALMAX at www.nauyachts.com

SPECIFICATION

SHIPYARD, MODEL	Azimut Magellano 30M
BUILT	2022
LENGTH	29.48 m
WATERLINE LENGTH	26.9 m
HULL CONFIGURATION	SEMI-DISPLACEMENT
BEAM	7.06 m
RANGE	1200
DRAFT	2.05 m
GROSS TONNAGE	195 GT
YACHT CLASS	RINA
CABINS	5+3
MASTER CABIN	MAIN DECK
GUESTS	10
BERTHS	10+5
CREW	5
HEADS	6+3

EXTERIOR DESIGN	KEN FREIVOKH
INTERIOR DESIGN	DE COTIS ARCHITECTS
HULL	GRP
SUPERSTRUCTURE	GRP
ENGINES	2 x MAN V12 1900 h.p.
TYPE OF DRIVE	SHAFT LINE
ENGINE HOURS	715 h
MAXIMUM SPEED	20 kn
CRUISING SPEED	12 kn
FUEL CONSUMPTION AT ECONOMICAL SPEED	~ 145 l/h
FUEL	14500 l
GREY WATER	900 l
BLACK WATER	900 l
FRESH WATER	2130 l
DISPLACEMENT	136

[see more information about M/Y PALMAX at www.nauyachts.com](http://www.nauyachts.com)



EXTERIOR AZIMUT MAGELLANO 30 METRI
2022 MY PALMAX

M/Y PALMAX



EXTERIOR AZIMUT MAGELLANO 30 METRI
2022 MY PALMAX

M/Y PALMAX



EXTERIOR AZIMUT MAGELLANO 30 METRI
2022 MY PALMAX

M/Y PALMAX



EXTERIOR AZIMUT MAGELLANO 30 METRI
2022 MY PALMAX

M/Y PALMAX



EXTERIOR AZIMUT MAGELLANO 30 METRI
2022 MY PALMAX

M/Y PALMAX



EXTERIOR AZIMUT MAGELLANO 30 METRI
2022 MY PALMAX

M/Y PALMAX



EXTERIOR AZIMUT MAGELLANO 30 METRI
2022 MY PALMAX

M/Y PALMAX



BOW LOUNGE AREA

M/Y PALMAX



BOW LOUNGE AREA

M/Y PALMAX



BOW LOUNGE AREA

M/Y PALMAX



AFT AREA

M/Y PALMAX



AFT AREA

M/Y PALMAX



FLYBRIDGE LOUNGE AREA

M/Y PALMAX



FLYBRIDGE DINING AREA

M/Y PALMAX



FLYBRIDGE DINING AREA

M/Y PALMAX



FLYBRIDGE DINING AREA

M/Y PALMAX



COCKPIT SEATING AREA

M/Y PALMAX



COCKPIT SEATING AREA

M/Y PALMAX



MAIN SALON LOUNGE AREA

M/Y PALMAX



MAIN SALON LOUNGE AREA

M/Y PALMAX



MAIN SALON LOUNGE AREA

M/Y PALMAX



MAIN SALON DINING AREA

M/Y PALMAX



MAIN SALON DINING AREA

M/Y PALMAX



MAIN SALON DINING AREA

M/Y PALMAX



MAIN HELM STATION

M/Y PALMAX



MASTER CABIN

M/Y PALMAX



MASTER CABIN

M/Y PALMAX



MASTER CABIN

M/Y PALMAX



MASTER CABIN

M/Y PALMAX



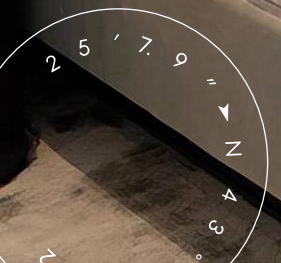
MASTER BATHROOM

M/Y PALMAX



MASTER BATHROOM

M/Y PALMAX



VIP CABIN

M/Y PALMAX



VIP BATHROOM

M/Y PALMAX



GUEST CABIN

M/Y PALMAX



GUEST CABIN

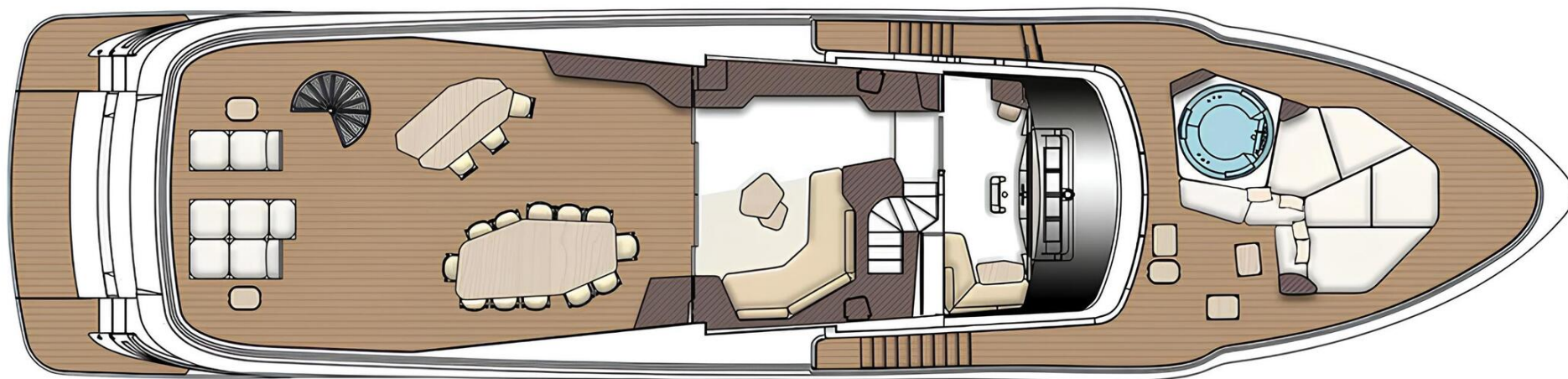
M/Y PALMAX



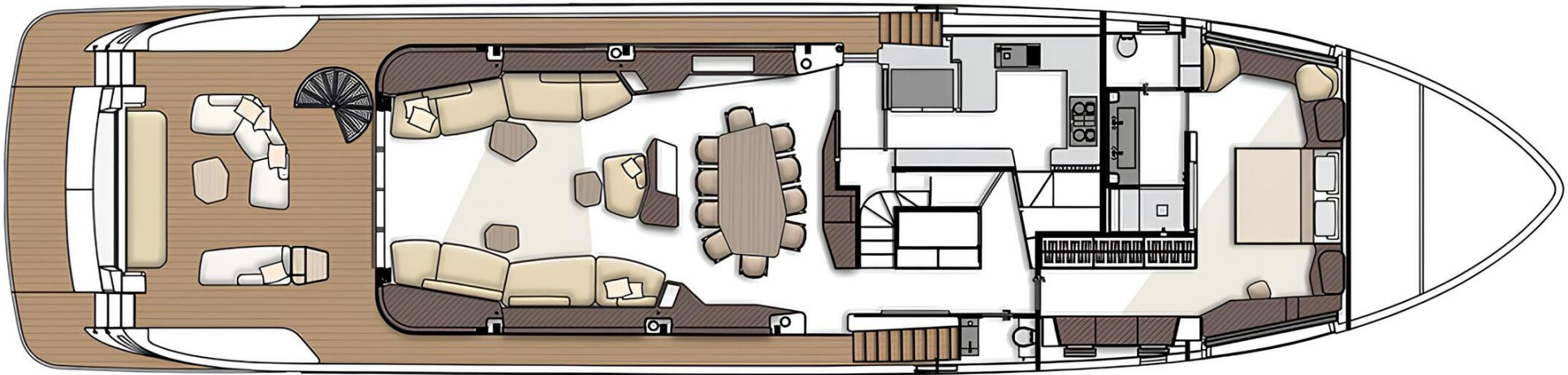
GALLEY

M/Y PALMAX

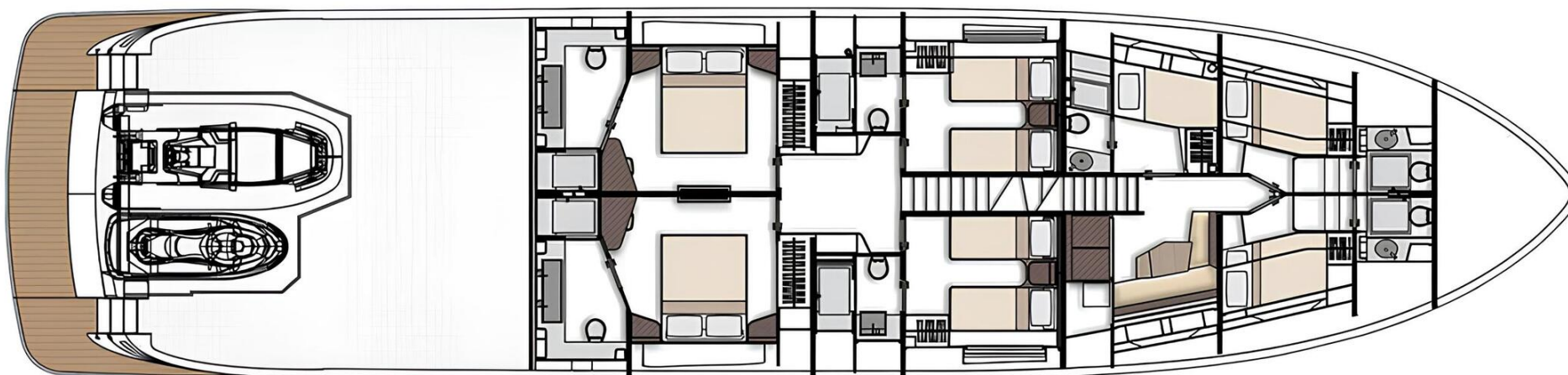
General Arrangement



FLYBRIDGE



MAIN DECK



LOWER DECK



KIRILL KUATOV

+377 607 93 15 20

+39 333 576 44 44

 [Send e-mail](#)

 WhatsApp

 Telegram

[More information about M/Y PALMAX at www.nauyachts.com](#)

[Watch video](#)