



Brokerage

NAU  
YACHTS

CYBELE

MOTOR YACHT    SANLORENZO 29.1M    2015

FLAG - UK



MOTOR YACHT

## CYBELE

**CYBELE** is a 29-metre (96') **Sanlorenzo SL96** motor yacht, launched in 2015 and refitted in 2022, maintained in impeccable condition. Her interior layout is versatile and well thought out, offering a full-beam owner's suite, a VIP cabin, and two guest cabins on the lower deck. The main deck features a comfortable lounge and a formal dining area for eight guests.

Exterior spaces include a hydraulic swim platform, an aft cockpit with dining area, forward sunbathing zone, and a flybridge lounge, providing multiple areas for relaxation and entertaining.

Powered by twin MTU 16V 2000M84 engines of 2,216 hp each, **CYBELE** cruises comfortably at 25 knots and reaches a maximum speed of 29 knots. With a 10,000-litre fuel capacity and 1,900 litres of fresh water, she offers excellent autonomy for extended cruising.



[see more information about M/Y CYBELE at www.nauyachts.com](http://www.nauyachts.com)

# SPECIFICATION

SHIPYARD, MODEL	Sanlorenzo SL96
BUILT	2015
LENGTH	29.1 m
WATERLINE LENGTH	23.18 m
HULL CONFIGURATION	PLANING
BEAM	6.7 m
RANGE	1250
DRAFT	1.9 m
GROSS TONNAGE	155 GT
YACHT CLASS	RINA
CABINS	4+2
MASTER CABIN	MAIN DECK
GUESTS	8
BERTHS	8+4
CREW	4
HEADS	4+2

EXTERIOR DESIGN	FRANCESCO PASZKOWSKI
INTERIOR DESIGN	LAURA SESSA
HULL	GRP
SUPERSTRUCTURE	GRP
ENGINES	2 x MTU 16V 2000M84 2216 h.p.
TYPE OF DRIVE	SHAFT LINE
ENGINE HOURS	2012 h
MAXIMUM SPEED	29 kn
CRUISING SPEED	25 kn
FUEL CONSUMPTION AT ECONOMICAL SPEED	~ 500 l/h
FUEL	10350 l
GREY WATER	760 l
BLACK WATER	560 l
FRESH WATER	1900 l
DISPLACEMENT	110

[see more information about M/Y CYBELE at www.nauyachts.com](http://www.nauyachts.com)





EXTERIOR SANLORENZO SL96 2015 MY  
CYBELE

M/Y CYBELE





EXTERIOR SANLORENZO SL96 2015 MY  
CYBELE

M/Y CYBELE





EXTERIOR SANLORENZO SL96 2015 MY  
CYBELE

M/Y CYBELE





EXTERIOR SANLORENZO SL96 2015 MY  
CYBELE

M/Y CYBELE





EXTERIOR SANLORENZO SL96 2015 MY  
CYBELE

M/Y CYBELE





EXTERIOR SANLORENZO SL96 2015 MY  
CYBELE

M/Y CYBELE





BOW LOUNGE AREA

M/Y CYBELE





FLYBRIDGE DINING AREA

M/Y CYBELE





FLYBRIDGE DINING AREA

M/Y CYBELE





COCKPIT DINING AREA

M/Y CYBELE





COCKPIT DINING AREA

M/Y CYBELE





COCKPIT DINING AREA

M/Y CYBELE





MAIN SALON LOUNGE AREA

M/Y CYBELE





MAIN SALON LOUNGE AREA

M/Y CYBELE





MAIN SALON LOUNGE AREA

M/Y CYBELE





MAIN SALON LOUNGE AREA

M/Y CYBELE





MAIN SALON DINING AREA

M/Y CYBELE





MAIN HELM STATION

M/Y CYBELE





MAIN HELM STATION

M/Y CYBELE





GALLEY

M/Y CYBELE





MASTER CABIN

M/Y CYBELE





MASTER CABIN

M/Y CYBELE





MAKE-UP TABLE IN MASTER CABIN

M/Y CYBELE





MASTER BATHROOM

M/Y CYBELE

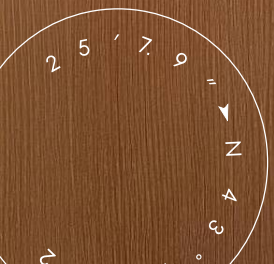




STAIRS FROM MD TO LD

M/Y CYBELE





GUEST CABIN

M/Y CYBELE





GUEST BATHROOM

M/Y CYBELE





VIP CABIN

M/Y CYBELE





VIP BATHROOM

M/Y CYBELE





CREW AREA

M/Y CYBELE





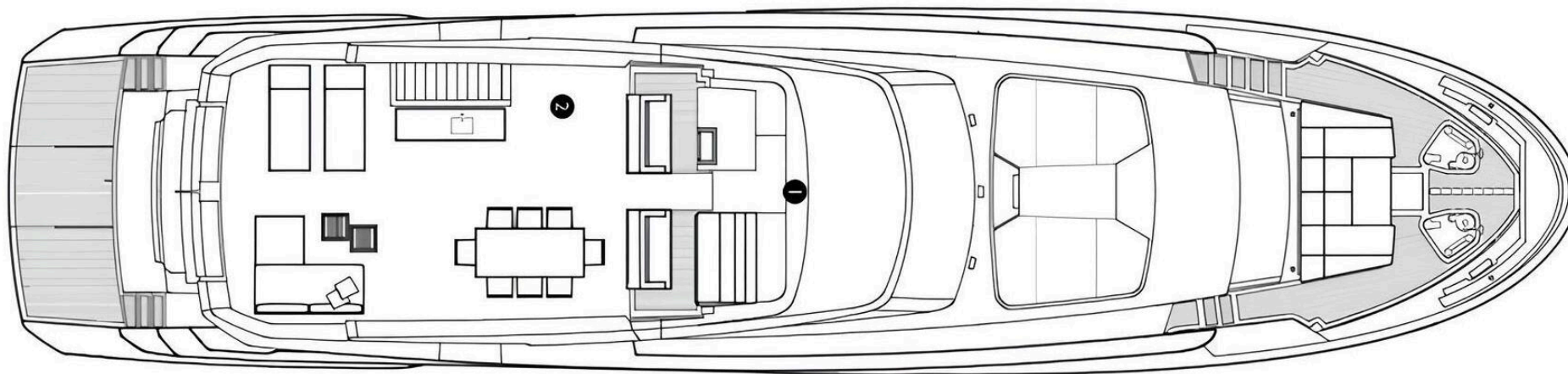
CREW AREA

M/Y CYBELE



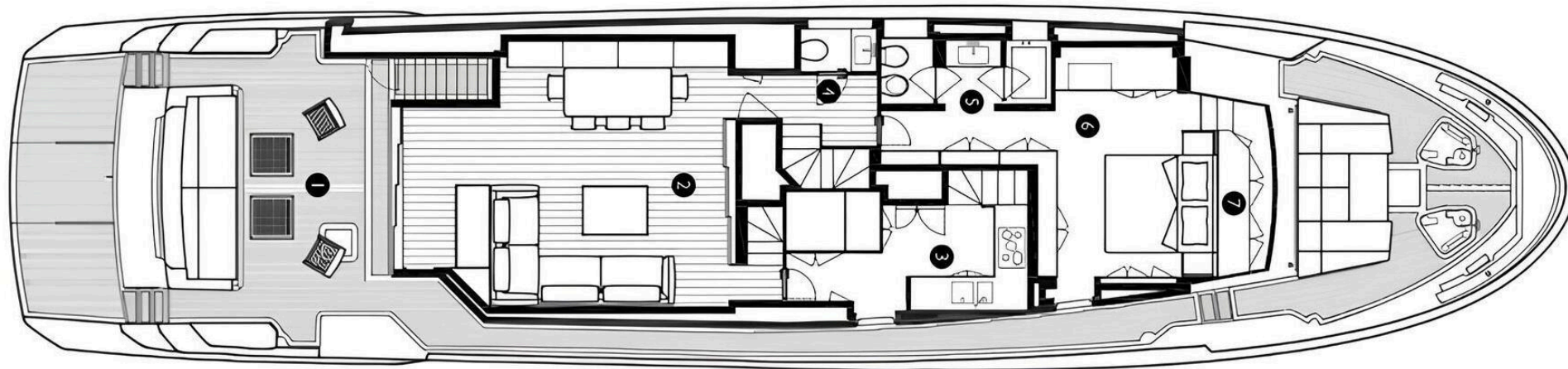
# General Arrangement





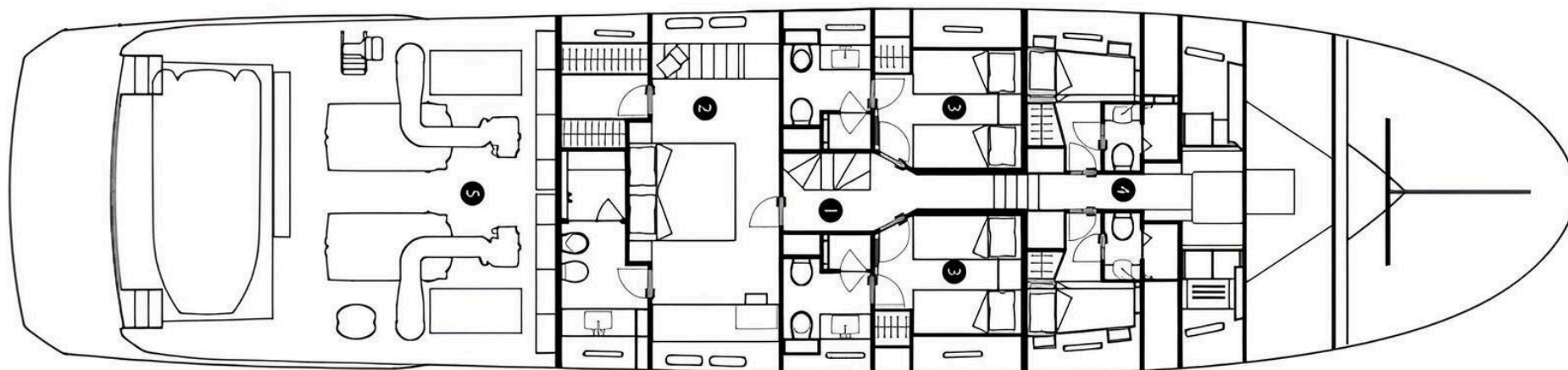
FLYBRIDGE





MAIN DECK





LOWER DECK





KIRILL KUATOV

+377 607 93 15 20

+39 333 576 44 44

 [Send e-mail](#)

 WhatsApp

 Telegram