



Brokerage

NAU  
YACHTS

ARIA

MOTOR YACHT    AZIMUT 29.63M    2024

€9,500,000  
FLAG - JERSEY



MOTOR YACHT

## ARIA



Launched in July 2024, **ARIA (Azimut Magellano 30 Metri)** stands out as one of the most technologically advanced yachts in her class. Equipped with Azimut's innovative Low Emission system, she reduces fuel consumption and CO<sub>2</sub> emissions by up to 20%, ensuring compliance with future environmental standards.

More than €3 million has been invested in options, including €800,000 in targeted upgrades—placing her well ahead of comparable new builds. Her striking Stardust Silver hull was designed by Ken Freivokh, while interiors by Vincenzo De Cotiis showcase refined Italian craftsmanship.

Measuring 29.63 m with a 7 m beam, **ARIA** offers generous outdoor living spaces: a Jacuzzi on the flybridge, marble-topped bar, modular sunloungers and enhanced lighting. Inside, she accommodates 10 guests in five staterooms, including a main-deck owner's suite with a spacious en-suite bathroom and lounge area. Crew quarters sleep up to six. Finishes include Arabescato Orobico marble, high-gloss lacquered details and an upgraded Platinum audio-video package.

Powered by twin MAN V12-1900 engines, she cruises at 16 knots and reaches a top speed of 19.4 knots. Zero-speed stabilisers, upgraded generators, a tender refuelling station and enhanced soundproofing further elevate comfort and efficiency.

With only 280 engine hours and 600 generator hours, **ARIA** remains in impeccable condition. She benefits from factory warranty coverage until July 2026 and is offered as a genuine turnkey opportunity—ready for immediate delivery and saving significant time compared to a new build.

[see more information about M/Y ARIA at www.nauyachts.com](http://www.nauyachts.com)

# SPECIFICATION

SHIPYARD, MODEL	Azimut Magellano 30M
BUILT	2024
LENGTH	29.63 m
WATERLINE LENGTH	28.34 m
HULL CONFIGURATION	PLANING
BEAM	7 m
RANGE	315
DRAFT	1.95 m
GROSS TONNAGE	199 GT
YACHT CLASS	RINA
CABINS	5+3
MASTER CABIN	MAIN DECK
GUESTS	10
BERTHS	10+6
CREW	6
HEADS	6+3

EXTERIOR DESIGN	KEN FREIVOKH
INTERIOR DESIGN	DE COTIS ARCHITECTS
HULL	GRP
SUPERSTRUCTURE	GRP
ENGINES	2 x MAN V12 1900 h.p.
TYPE OF DRIVE	SHAFT LINE
ENGINE HOURS	280 h
MAXIMUM SPEED	20 kn
CRUISING SPEED	16 kn
FUEL CONSUMPTION AT ECONOMICAL SPEED	N/A
FUEL	14500 l
GREY WATER	N/A
BLACK WATER	N/A
FRESH WATER	2130 l
DISPLACEMENT	136

[see more information about M/Y ARIA at www.nauyachts.com](http://www.nauyachts.com)





EXTERIOR AZIMUT MAGELLANO 30 METRI  
2024 MY ARIA

M/Y ARIA





EXTERIOR AZIMUT MAGELLANO 30 METRI  
2024 MY ARIA

M/Y ARIA





EXTERIOR AZIMUT MAGELLANO 30 METRI  
2024 MY ARIA

M/Y ARIA





EXTERIOR AZIMUT MAGELLANO 30 METRI  
2024 MY ARIA

M/Y ARIA





BOW AREA

M/Y ARIA





BOW AREA

M/Y ARIA





AFT AREA

M/Y ARIA





AFT MAIN DECK LOUNGE AREA

M/Y ARIA





AFT MAIN DECK LOUNGE AREA

M/Y ARIA





FLYBRIDGE AFT SUNBATHING AREA

M/Y ARIA





FLYBRIDGE BAR

M/Y ARIA





FLYBRIDGE DINING AREA

M/Y ARIA





MAIN SALON LOUNGE AREA

M/Y ARIA





MAIN SALON LOUNGE AREA

M/Y ARIA





MAIN SALON DINING AREA

M/Y ARIA





MAIN SALON DINING AREA

M/Y ARIA





MAIN HELM STATION

M/Y ARIA





MAIN HELM STATION

M/Y ARIA





MASTER CABIN

M/Y ARIA





MASTER CABIN

M/Y ARIA





MASTER CABIN LOUNGE AREA

M/Y ARIA





MAKE-UP TABLE IN MASTER CABIN

M/Y ARIA





MASTER BATHROOM

M/Y ARIA





STAIRS FROM MD TO LD

M/Y ARIA





VIP CABIN

M/Y ARIA





VIP BATHROOM

M/Y ARIA





VIP CABIN

M/Y ARIA





VIP BATHROOM

M/Y ARIA





GUEST CABIN

M/Y ARIA





GUEST CABIN

M/Y ARIA





GUEST BATHROOM

M/Y ARIA





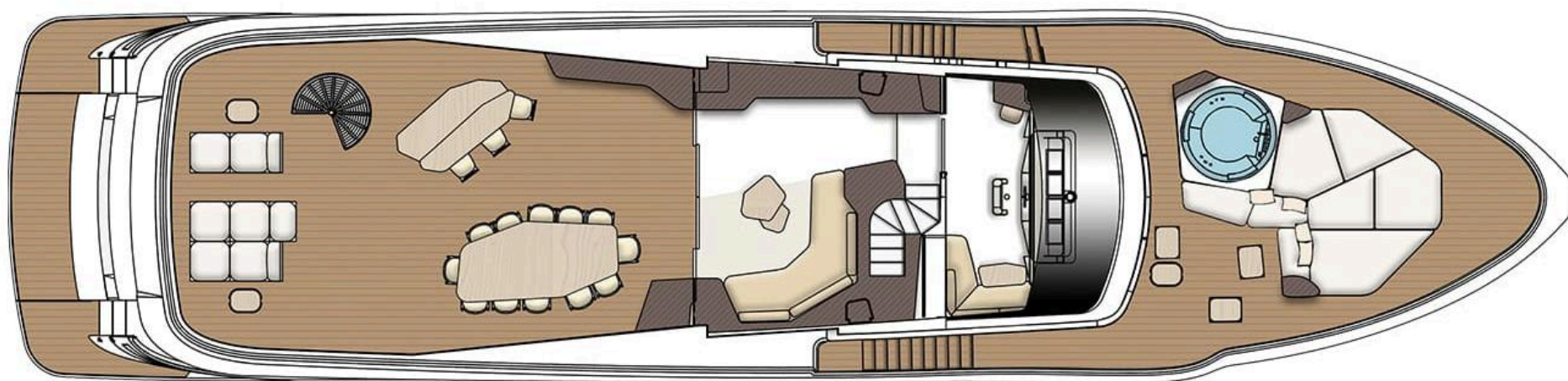
GALLEY

M/Y ARIA



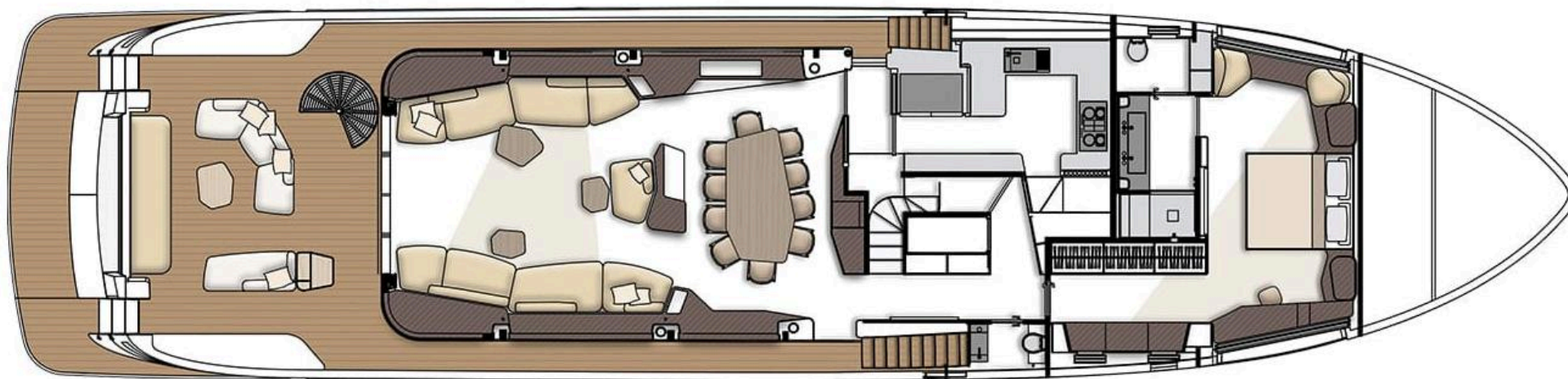
# General Arrangement





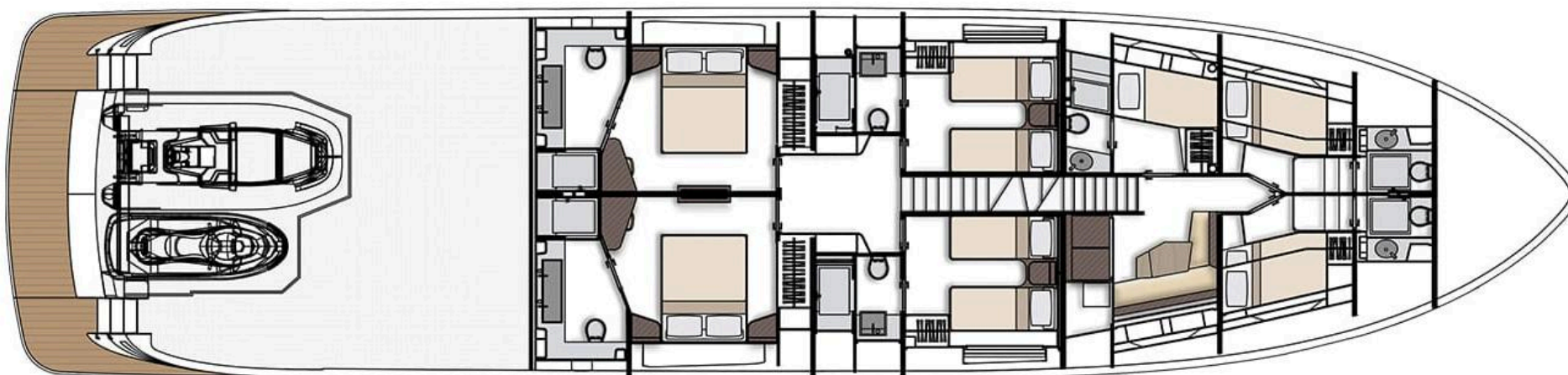
FLYBRIDGE





MAIN DECK





LOWER DECK





KIRILL KUATOV

+377 607 93 15 20

+39 333 576 44 44

 [Send e-mail](#)

 WhatsApp

 Telegram