



Brokerage

NAU
YACHTS

DIAMOND BINTA

MOTOR YACHT

TANKOA 58M

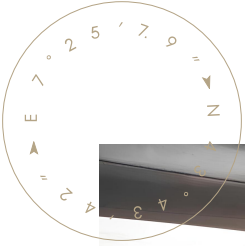
2024

€61,000,000

FLAG - MALTA

MOTOR YACHT

DIAMOND BINTA



Launched in 2024 by **Tankoa Yachts**, the 58-metre superyacht **DIAMOND BINTA** blends the contemporary styling of Francesco Paszkowski with the renowned engineering quality of Italian shipbuilding. With a steel hull, aluminium superstructure, 10-metre beam and 1,013 GT, she offers exceptional strength, stability and generous interior volumes.

Her twin Caterpillar 3512E engines (a combined 2,700 kW), working in tandem with CAT generators and Reintjes shaft generators, deliver quiet and efficient performance. A range of over 5,500 nautical miles ensures comfortable long-distance cruising.

On the lower deck, five guest cabins are connected by a central corridor leading to a beach club with lounge areas and a massage room. The owner's suite occupies the main deck and features a private lounge, terrace, study, dressing rooms and a large bathroom. Accommodation for 14 crew is arranged across seven cabins, including the captain's cabin on the upper deck.

Interiors by Paszkowski in collaboration with Margherita Casprini are finished in light, contemporary tones. The sun deck hosts a pool, sunbathing areas, gym and bar. A forward garage accommodates a 9-metre tender and a 7-metre RIB, while the certified helipad is designed for an Airbus ACH160.

Combining cutting-edge design, expansive spaces and transoceanic capability, **DIAMOND BINTA** represents a new generation of **Tankoa** superyachts.

see more information about M/Y DIAMOND BINTA at www.nauyachts.com

SPECIFICATION

SHIPYARD, MODEL	Tankoa T580
BUILT	2024
LENGTH	58 m
WATERLINE LENGTH	52.12 m
HULL CONFIGURATION	DISPLACEMENT
BEAM	10 m
RANGE	5400
DRAFT	3 m
GROSS TONNAGE	1013 GT
YACHT CLASS	LY3
CABINS	6+7
MASTER CABIN	MAIN DECK
GUESTS	14
BERTHS	14+14
CREW	14
HEADS	7+7

EXTERIOR DESIGN	FRANCESCO PASZKOWSKI DESIGN
INTERIOR DESIGN	FRANCESCO PASZKOWSKI DESIGN
HULL	STEEL
SUPERSTRUCTURE	ALUMINIUM
ENGINES	2 x CAT 3512E 1835 h.p.
TYPE OF DRIVE	SHAFT LINE
ENGINE HOURS	N/A
MAXIMUM SPEED	17 kn
CRUSING SPEED	15 kn
FUEL CONSUMPTION AT ECONOMICAL SPEED	~ 200 l/h
FUEL	126000 l
GREY WATER	7000 l
BLACK WATER	6200 l
FRESH WATER	30000 l
DISPLACEMENT	900

[see more information about M/Y DIAMOND BINTA at www.nauyachts.com](http://www.nauyachts.com)



EXTERIOR TANKOA T580 2024 MY DIAMOND
BINTA

M/Y DIAMOND BINTA



EXTERIOR TANKOA T580 2024 MY DIAMOND
BINTA

M/Y DIAMOND BINTA



EXTERIOR TANKOA T580 2024 MY DIAMOND
BINTA

M/Y DIAMOND BINTA



EXTERIOR TANKOA T580 2024 MY DIAMOND
BINTA

M/Y DIAMOND BINTA



EXTERIOR TANKOA T580 2024 MY DIAMOND
BINTA

M/Y DIAMOND BINTA



BEACH CLUB

M/Y DIAMOND BINTA



BEACH CLUB

M/Y DIAMOND BINTA



BEACH CLUB

M/Y DIAMOND BINTA



AFT MAIN DECK LOUNGE AREA

M/Y DIAMOND BINTA



AFT MAIN DECK LOUNGE AREA

M/Y DIAMOND BINTA



AFT MAIN DECK LOUNGE AREA

M/Y DIAMOND BINTA



AFT MAIN DECK DINING AREA

M/Y DIAMOND BINTA



BOW AREA

M/Y DIAMOND BINTA



BOW AREA

M/Y DIAMOND BINTA



BOW AREA

M/Y DIAMOND BINTA



SUNDECK LOUNGE AREA

M/Y DIAMOND BINTA



LOWER DECK LOUNGE AREA

M/Y DIAMOND BINTA



LOWER DECK LOUNGE AREA

M/Y DIAMOND BINTA



MAIN SALON LOUNGE AREA

M/Y DIAMOND BINTA



MAIN SALON DINING AREA

M/Y DIAMOND BINTA



MASTER CABIN

M/Y DIAMOND BINTA



MASTER CABIN LOUNGE AREA

M/Y DIAMOND BINTA



MASTER CABIN LOUNGE AREA

M/Y DIAMOND BINTA



MASTER BATHROOM

M/Y DIAMOND BINTA



VIP CABIN

M/Y DIAMOND BINTA



VIP CABIN

M/Y DIAMOND BINTA



VIP BATHROOM

M/Y DIAMOND BINTA



GUEST CABIN

M/Y DIAMOND BINTA



GUEST CABIN

M/Y DIAMOND BINTA



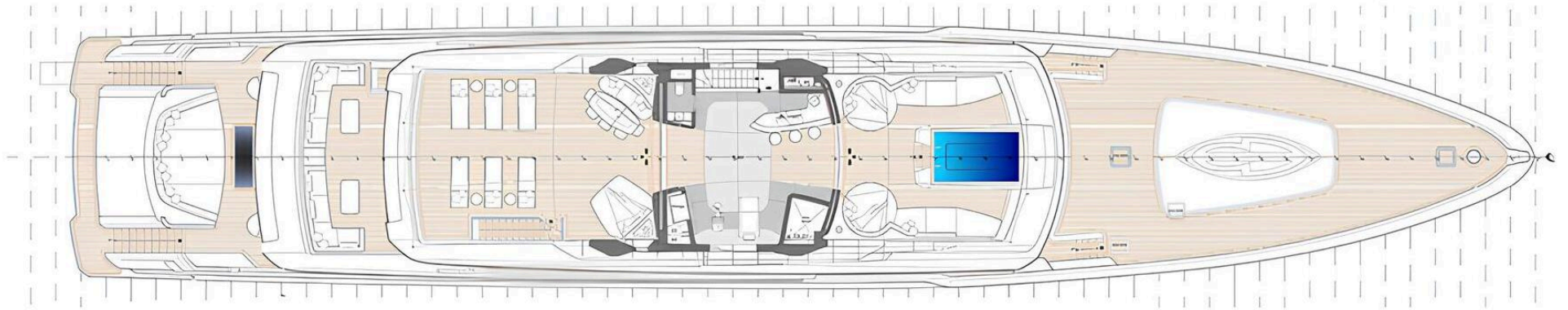
MAIN HELM STATION

M/Y DIAMOND BINTA

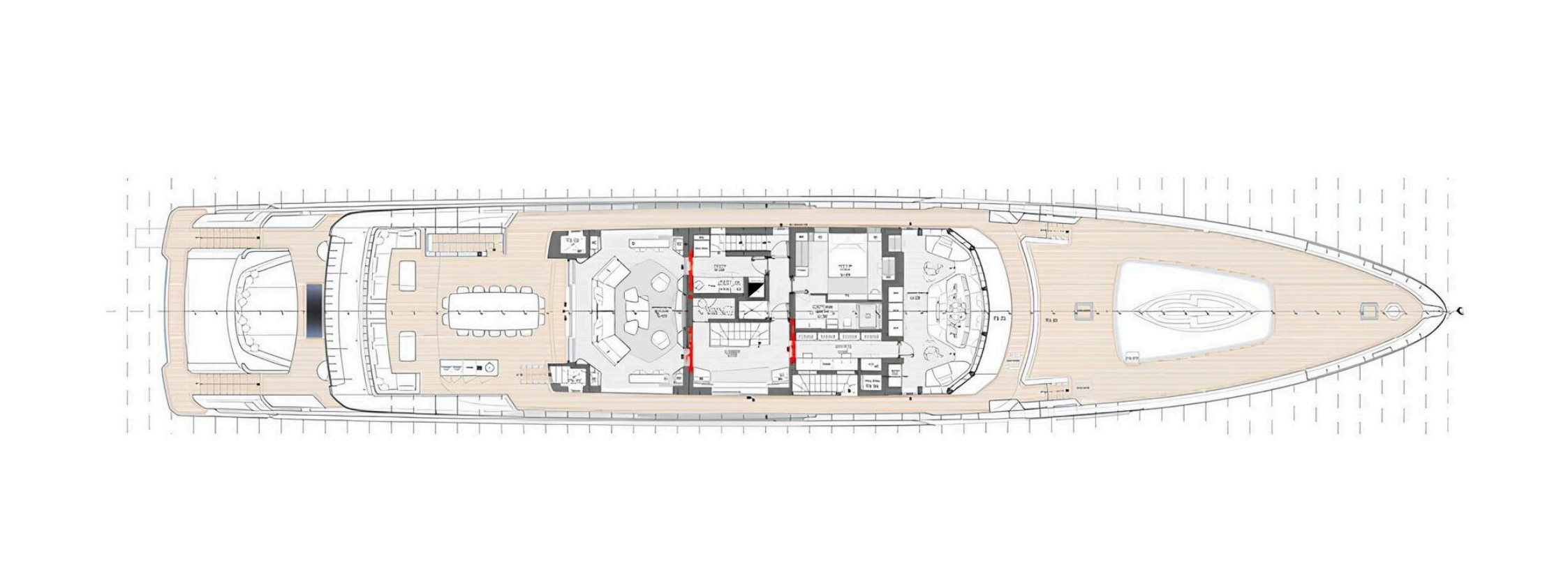
General Arrangement

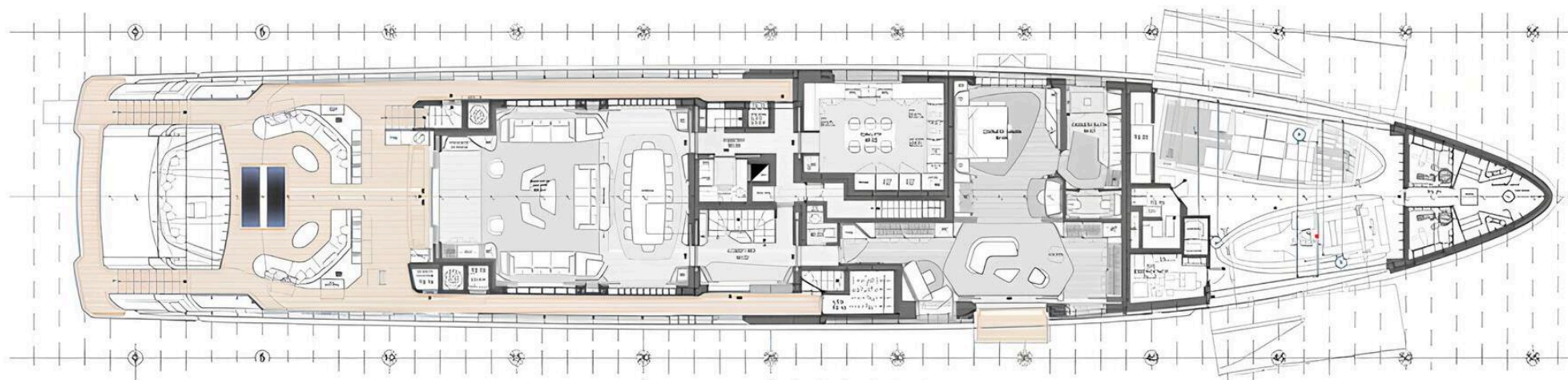


PROFILE

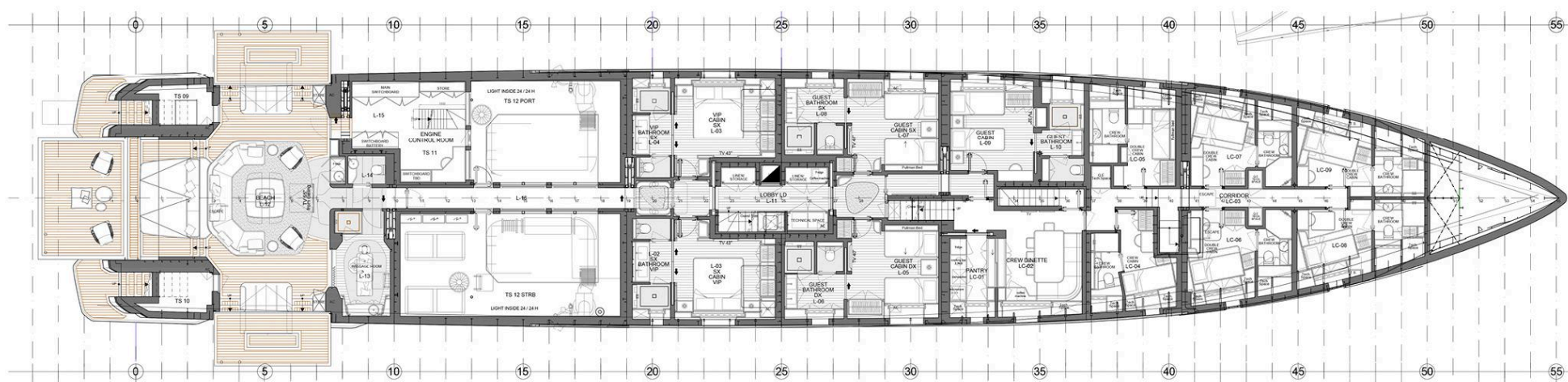


SUNDECK





MAIN DECK



LOWER DECK



KIRILL KUATOV

+377 607 93 15 20

+39 333 576 44 44

 [Send e-mail](#)

 WhatsApp

 Telegram

[More information about M/Y DIAMOND BINTA at www.nauyachts.com](http://www.nauyachts.com)

[Watch video](#)