



Brokerage

NAU
YACHTS

JANGADA

MOTOR YACHT VAN DER VALK 32M 2019

€8,500,000 (VAT paid)
FLAG - MALTA

MOTOR YACHT

JANGADA



JANGADA is a 32-metre motor yacht built by **Van der Valk** and delivered to her owner in 2019. Classed to RINA and having completed her five-year survey in June 2024, she combines Dutch craftsmanship with cutting-edge engineering. Her all-aluminium hull and superstructure were created by Nick Top, Guido de Groot and Van Ossanen.

Featuring Van Ossanen's Hull Vane® for improved fuel efficiency and stability, and a VEEM gyrostabiliser for comfort both underway and at anchor, **JANGADA** also benefits from a 2-metre draft allowing access to shallow waters. Twin MTU diesel engines deliver a top speed of 23 knots and an economical cruising speed of 10 knots with a range of 1,600 nautical miles.

She accommodates up to eight guests in four cabins, including a full-beam owner's suite on the lower deck and a VIP cabin on the main deck. An additional single cabin and separate quarters for five crew ensure smooth operations. The raised pilothouse integrates with a panoramic dining area, while underfloor heating throughout adds to onboard comfort.

Exterior spaces include a flybridge with lounge area and tender storage, and a stern garage capable of holding two jet skis or other water toys. **JANGADA** offers a ready-to-enjoy platform for extended cruising, blending modern technology with functional layouts.

see more information about M/Y JANGADA at www.nauyachts.com

SPECIFICATION

SHIPYARD, MODEL	Van Der Valk WV0120
BUILT	2019
LENGTH	32 m
WATERLINE LENGTH	26.24 m
HULL CONFIGURATION	SEMI-DISPLACEMENT
BEAM	7.05 m
RANGE	1600
DRAFT	2 m
GROSS TONNAGE	175 GT
YACHT CLASS	RINA
CABINS	4+3
MASTER CABIN	LOWER DECK
GUESTS	8
BERTHS	8+5
CREW	5
HEADS	5+3

EXTERIOR DESIGN	NICK TOP & GUIDO DE GROOT DESIGN
INTERIOR DESIGN	NICK TOP & GUIDO DE GROOT DESIGN
HULL	ALUMINUM
SUPERSTRUCTURE	ALUMINIUM
ENGINES	2 x MTU 12V2000M96L 1920 h.p.
TYPE OF DRIVE	SHAFT LINE
ENGINE HOURS	N/A
MAXIMUM SPEED	23 kn
CRUSING SPEED	10 kn
FUEL CONSUMPTION AT ECONOMICAL SPEED	N/A
FUEL	12900 l
GREY WATER	N/A
BLACK WATER	N/A
FRESH WATER	2600 l
DISPLACEMENT	127

[see more information about M/Y JANGADA at www.nauyachts.com](http://www.nauyachts.com)



EXTERIOR VAN DER VALK 32M 2019 MY
JANGADA

M/Y JANGADA



EXTERIOR VAN DER VALK 32M 2019 MY
JANGADA

M/Y JANGADA



EXTERIOR VAN DER VALK 32M 2019 MY
JANGADA

M/Y JANGADA



EXTERIOR VAN DER VALK 32M 2019 MY
JANGADA

M/Y JANGADA



FLYBRIDGE LOUNGE AREA

M/Y JANGADA



BOW LOUNGE AREA

M/Y JANGADA



COCKPIT SEATING AREA

M/Y JANGADA



GARAGE

M/Y JANGADA



MAIN SALON LOUNGE AREA

M/Y JANGADA



MAIN SALON LOUNGE AREA

M/Y JANGADA



MAIN SALON DINING AREA

M/Y JANGADA



VIP CABIN

M/Y JANGADA



MASTER CABIN

M/Y JANGADA



VIP CABIN

M/Y JANGADA



GUEST CABIN

M/Y JANGADA



GUEST BATHROOM

M/Y JANGADA



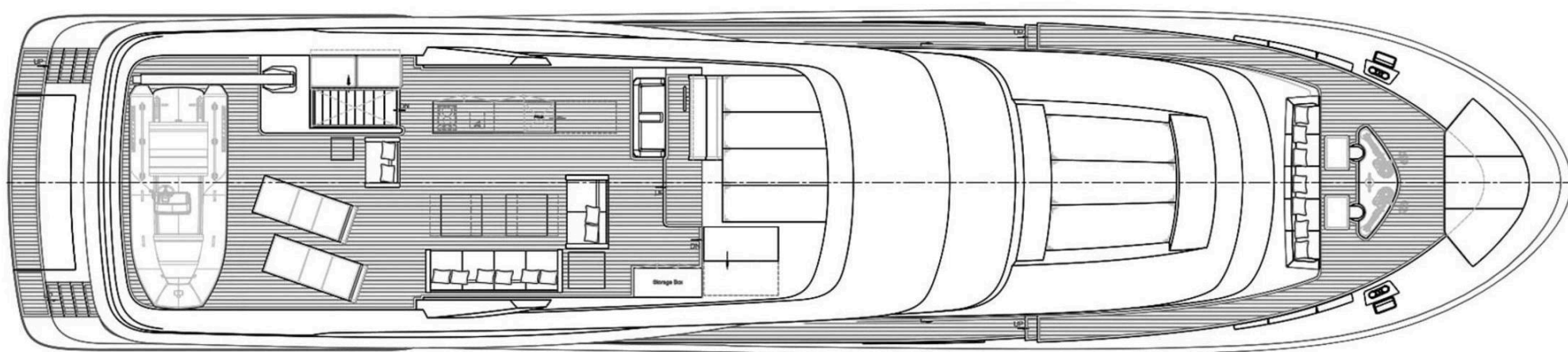
GALLEY

M/Y JANGADA

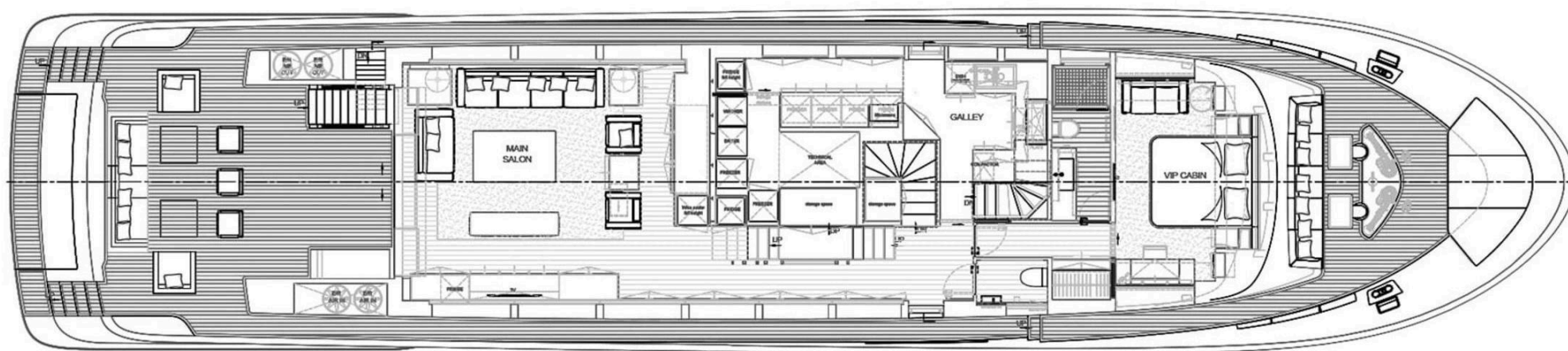
General Arrangement



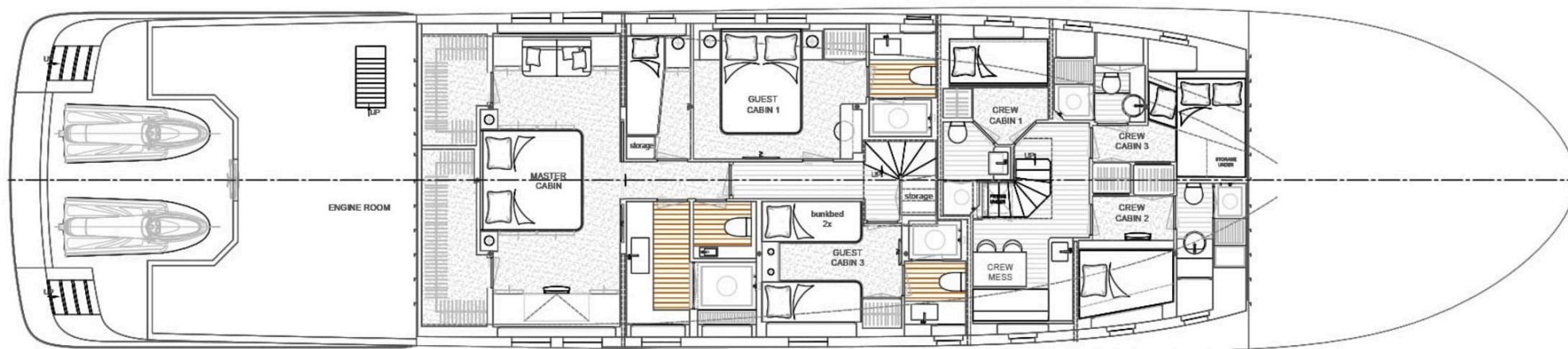
PROFILE



FLYBRIDGE



MAIN DECK



LOWER DECK



KIRILL KUATOV

+377 607 93 15 20

+39 333 576 44 44

 [Send e-mail](#)

 WhatsApp

 Telegram