



Brokerage

NAU
YACHTS

JUST MARIE III

MOTOR YACHT SANLORENZO 34.16M 2021

€9,800,000
FLAG - GREEK

MOTOR YACHT

JUST MARIE III



The 34.16-meter motor yacht **JUST MARIE III**, part of **Sanlorenzo's** acclaimed **SX112** series, was built in 2021. Her striking silver-grey hull, exterior styling by Zuccon International Project, and interiors by Piero Lissoni showcase the very best of contemporary Italian design and craftsmanship.

Constructed with a composite hull and aluminum superstructure, **JUST MARIE III** combines reliability with efficiency. Her layout is conceived for seamless indoor-outdoor living: a spacious beach club with fold-out terraces at the stern creates a waterside lounge, while the enclosed flybridge above offers panoramic views with a dining area and comfortable lounge. Large windows throughout flood the interiors with natural light, enhancing the sense of openness.

She accommodates up to eight guests in four cabins, with separate quarters for five crew members to ensure maximum privacy. Powered by four Volvo Penta D13B engines of 1,000 hp each, **JUST MARIE III** reaches 24 knots with a cruising speed of 20 knots. An 8-meter beam and a gross tonnage of 228 GT give her exceptional volume for a yacht of her length.

JUST MARIE III represents a rare opportunity to acquire a near-new **Sanlorenzo SX112**, combining modern styling with expansive social and relaxation spaces.

[see more information about M/Y JUST MARIE III at www.nauyachts.com](http://www.nauyachts.com)

SPECIFICATION

SHIPYARD, MODEL	Sanlorenzo SX112
BUILT	2021
LENGTH	34.16 m
WATERLINE LENGTH	31.06 m
HULL CONFIGURATION	SEMI-DISPLACEMENT
BEAM	7.32 m
RANGE	2500
DRAFT	1.8 m
GROSS TONNAGE	228 GT
YACHT CLASS	RINA
CABINS	4+3
MASTER CABIN	LOWER DECK
GUESTS	8
BERTHS	8+5
CREW	5
HEADS	4+3

EXTERIOR DESIGN	ZUCCON INTERNATIONAL PROJECT
INTERIOR DESIGN	PIERO LISSONI
HULL	GRP
SUPERSTRUCTURE	ALUMINIUM
ENGINES	4 x Volvo Penta IPS3 1000 h.p.
TYPE OF DRIVE	VOLVO PENTA IPS
ENGINE HOURS	2150 h
MAXIMUM SPEED	24 kn
CRUISING SPEED	20 kn
FUEL CONSUMPTION AT ECONOMICAL SPEED	~ 550 l/h
FUEL	10000 l
GREY WATER	950 l
BLACK WATER	850 l
FRESH WATER	2200 l
DISPLACEMENT	149

[see more information about M/Y JUST MARIE III at www.nauyachts.com](http://www.nauyachts.com)



EXTERIOR SANLORENZO SX112 2021 MY JUST
MARIE III

M/Y JUST MARIE III



EXTERIOR SANLORENZO SX112 2021 MY JUST
MARIE III

M/Y JUST MARIE III



EXTERIOR SANLORENZO SX112 2021 MY JUST
MARIE III

M/Y JUST MARIE III



FLYBRIDGE LOUNGE AREA

M/Y JUST MARIE III



SECOND HELM STATION

M/Y JUST MARIE III



FLYBRIDGE AFT SUNBATHING AREA

M/Y JUST MARIE III



BOW LOUNGE AREA

M/Y JUST MARIE III



BOW LOUNGE AREA

M/Y JUST MARIE III



COCKPIT SEATING AREA

M/Y JUST MARIE III



COCKPIT SEATING AREA

M/Y JUST MARIE III



MAIN SALON

M/Y JUST MARIE III



MAIN SALON LOUNGE AREA

M/Y JUST MARIE III



MAIN SALON LOUNGE AREA

M/Y JUST MARIE III



MAIN SALON LOUNGE AREA

M/Y JUST MARIE III



MAIN SALON LOUNGE AREA

M/Y JUST MARIE III



VIP CABIN

M/Y JUST MARIE III



VIP CABIN

M/Y JUST MARIE III



VIP BATHROOM

M/Y JUST MARIE III



VIP CABIN

M/Y JUST MARIE III



MASTER CABIN

M/Y JUST MARIE III



MASTER CABIN LOUNGE AREA

M/Y JUST MARIE III



MASTER BATHROOM

M/Y JUST MARIE III



MASTER BATHROOM

M/Y JUST MARIE III



LOWER DECK LOBBY

M/Y JUST MARIE III



LOWER DECK LOBBY

M/Y JUST MARIE III



LOWER DECK LOBBY

M/Y JUST MARIE III



GYM

M/Y JUST MARIE III



GYM

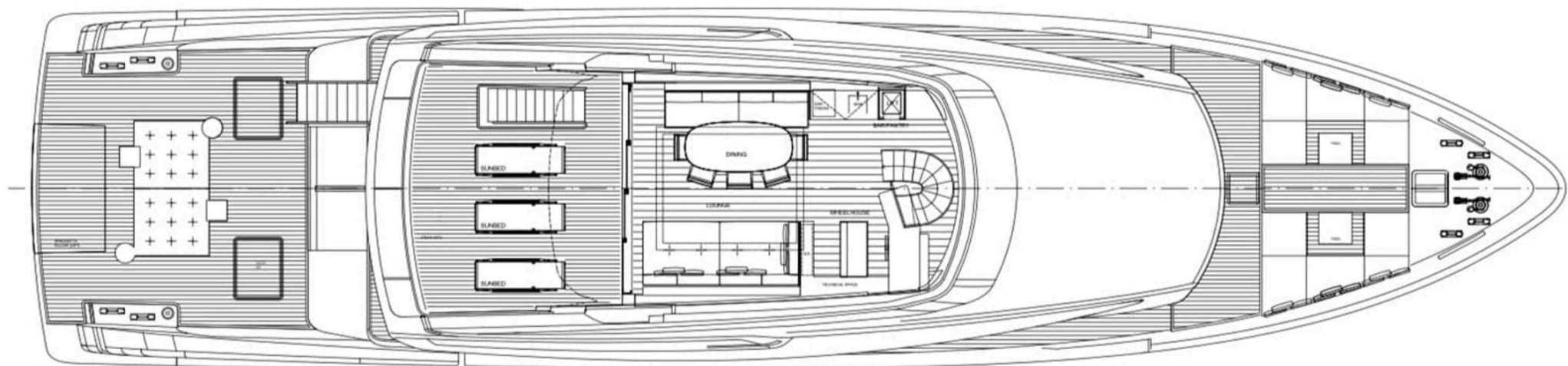
M/Y JUST MARIE III



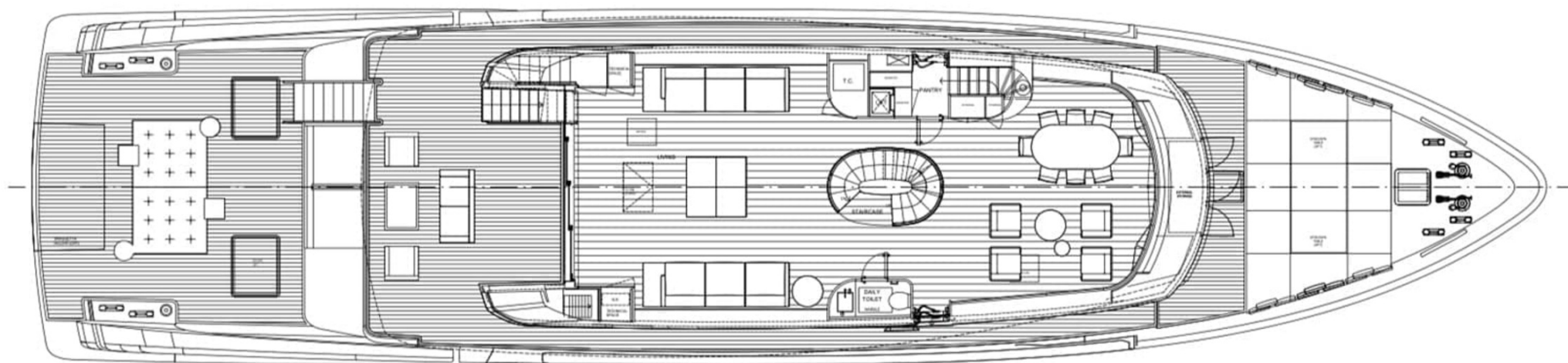
GYM

M/Y JUST MARIE III

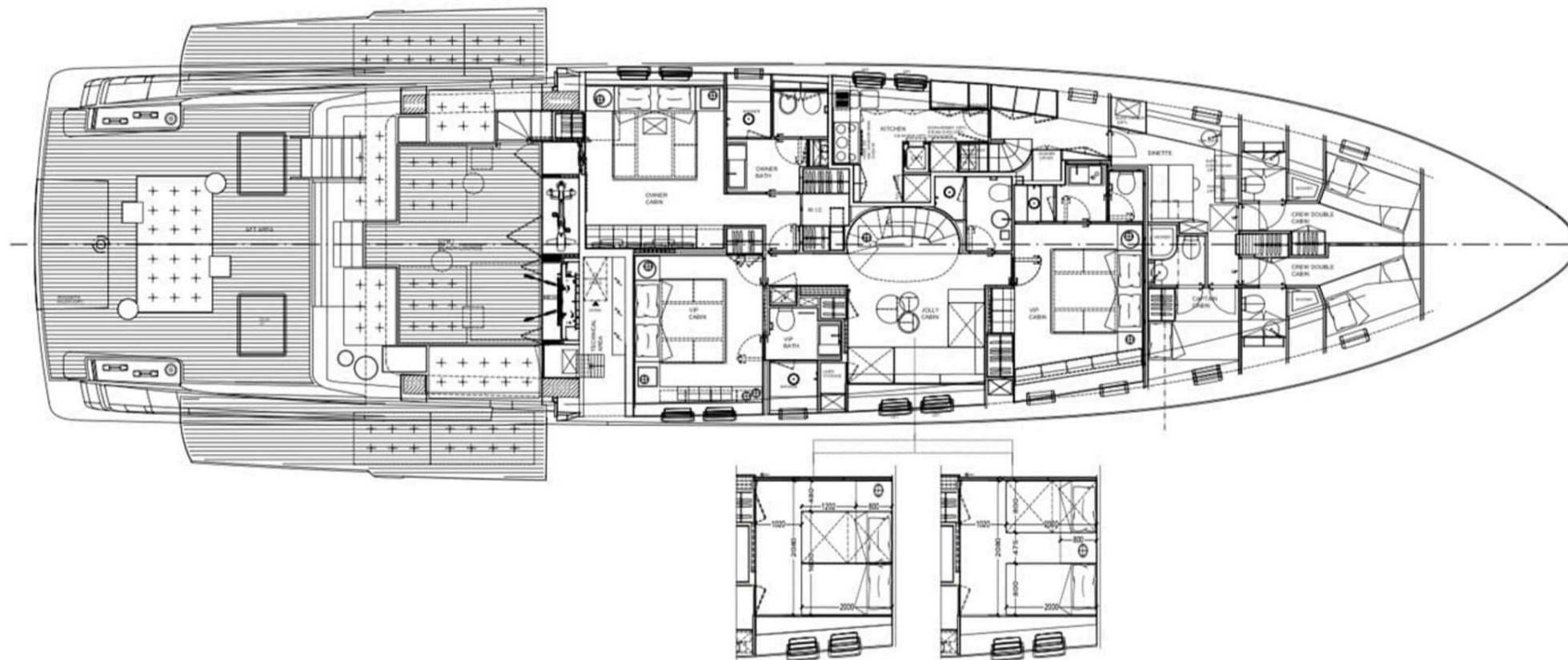
General Arrangement



FLYBRIDGE



MAIN DECK



LOWER DECK



KIRILL KUATOV

+377 607 93 15 20

+39 333 576 44 44

 [Send e-mail](#)

 WhatsApp

 Telegram

[More information about M/Y JUST MARIE III at www.nauyachts.com](#)

[Watch video](#)