



Brokerage

NAU  
YACHTS

GRANIL

MOTOR YACHT   CANTIERE DELLE MARCHE 26.07M   2014

€7,500,000 (VAT paid)  
FLAG - ITALY



MOTOR YACHT

## GRANIL



**GRANIL** is a 26.1-metre **Darwin 86** explorer yacht, built in 2014 by the renowned Italian shipyard **Cantiere delle Marche**. She is one of only six models in the **Darwin 86** series and embodies the robust, ocean-going DNA of the line with a full-displacement steel hull, light-grey exterior, and an aluminium superstructure. Her exterior styling is by Jonathan Quinn Barnett, while the interiors were designed by Hydro Tec, blending functionality with refined Italian craftsmanship. Built to DNV, MCA, and RINA standards, **GRANIL** is engineered for both coastal cruising and extended offshore voyages.

Powered by twin MAN 2876 LE 403 engines (331 kW each), **GRANIL** cruises at 10 knots and reaches a top speed of 11.5 knots. With a fuel capacity of 16,500 litres, she offers a range of approximately 1,500 nautical miles. Her 203 GT of internal volume allows for generous living and social spaces across all decks, complemented by teak-laid exteriors for a classic yachting experience.

Accommodation is provided for eight guests in four en-suite staterooms, while up to four crew members are housed in two separate cabins, ensuring a high level of service and operational independence. The main deck features a salon and dining area, a fully equipped galley, and expansive outdoor lounging and dining spaces, designed for comfort and long-term cruising.

Well-equipped with modern navigation and auxiliary systems, **GRANIL** offers an ideal balance of durability, style, and autonomy — a true explorer yacht for owners seeking adventure without compromising on comfort.

see more information about M/Y GRANIL at [www.nauyachts.com](http://www.nauyachts.com)

# SPECIFICATION

SHIPYARD, MODEL	Cantiere Delle Marche Darwin 86
BUILT	2014
LENGTH	26.07 m
WATERLINE LENGTH	22.9 m
HULL CONFIGURATION	DISPLACEMENT
BEAM	7.43 m
RANGE	1500
DRAFT	2.42 m
GROSS TONNAGE	203 GT
YACHT CLASS	DNV, MCA, RINA
CABINS	4+2
MASTER CABIN	LOWER DECK
GUESTS	8
BERTHS	8+4
CREW	4
HEADS	4+2

EXTERIOR DESIGN	PFA DESIGN
INTERIOR DESIGN	HYDRO TEC
HULL	STEEL
SUPERSTRUCTURE	ALUMINIUM
ENGINES	2 x MAN 2876 LE 445 h.p.
TYPE OF DRIVE	SHAFT LINE
ENGINE HOURS	N/A
MAXIMUM SPEED	11.5 kn
CRUISING SPEED	10 kn
FUEL CONSUMPTION AT ECONOMICAL SPEED	~ 146 l/h
FUEL	16500 l
GREY WATER	1250 l
BLACK WATER	1250 l
FRESH WATER	3000 l
DISPLACEMENT	210

[see more information about M/Y GRANIL at www.nauyachts.com](http://www.nauyachts.com)





EXTERIOR CANTIERE DELLE MARCHE DARWIN  
86 2014 MY GRANIL

M/Y GRANIL





EXTERIOR CANTIERE DELLE MARCHE DARWIN  
86 2014 MY GRANIL

M/Y GRANIL





EXTERIOR CANTIERE DELLE MARCHE DARWIN  
86 2014 MY GRANIL

M/Y GRANIL



EXTERIOR CANTIERE DELLE MARCHE DARWIN  
86 2014 MY GRANIL

M/Y GRANIL





EXTERIOR CANTIERE DELLE MARCHE DARWIN  
86 2014 M/Y GRANIL

M/Y GRANIL





UPPER DECK SALOON

M/Y GRANIL





MAIN SALON LOUNGE AREA

M/Y GRANIL





MAIN SALON LOUNGE AREA

M/Y GRANIL





MAIN SALON LOUNGE AREA

M/Y GRANIL





MASTER CABIN

M/Y GRANIL





MASTER CABIN

M/Y GRANIL





MASTER CABIN

M/Y GRANIL





MASTER CABIN

M/Y GRANIL





MASTER CABIN

M/Y GRANIL





VIP CABIN

M/Y GRANIL





GALLEY

M/Y GRANIL





GALLEY

M/Y GRANIL





GALLEY

M/Y GRANIL





CREW AREA

M/Y GRANIL





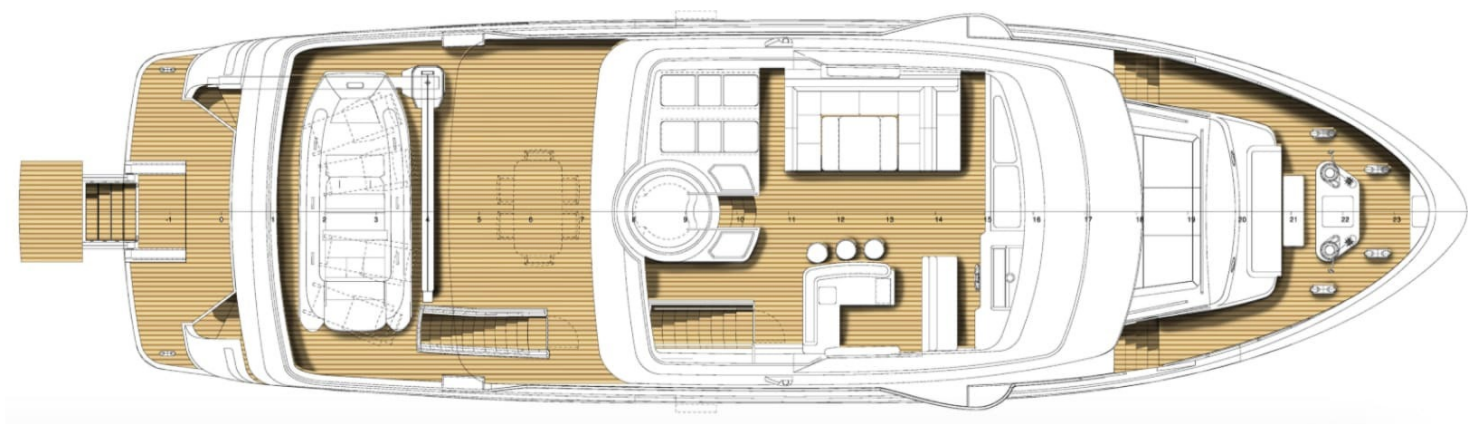
CREW AREA

M/Y GRANIL



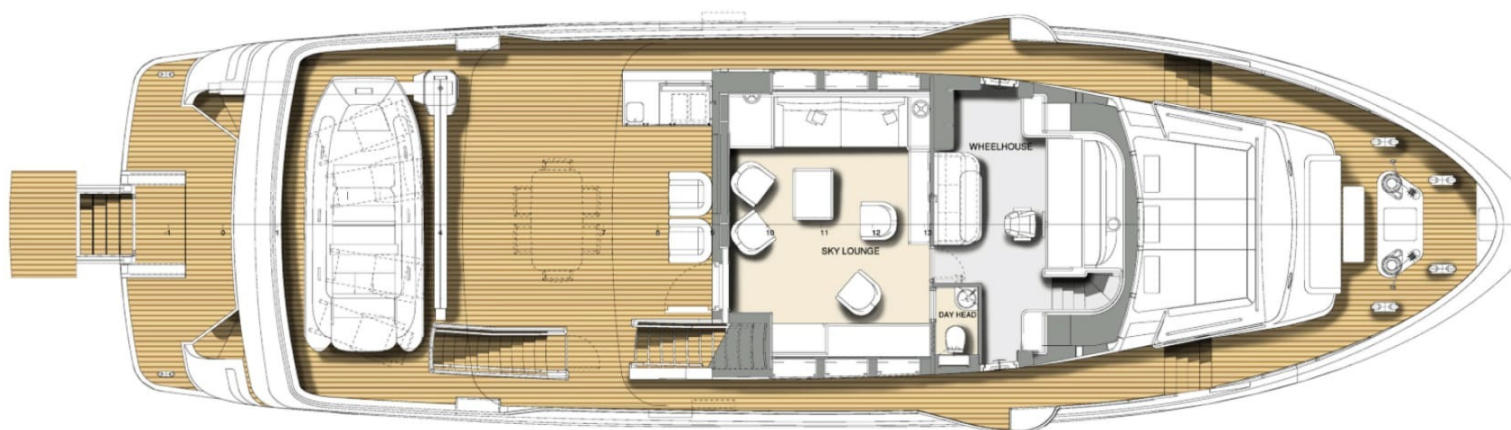
# General Arrangement





SUNDECK





---

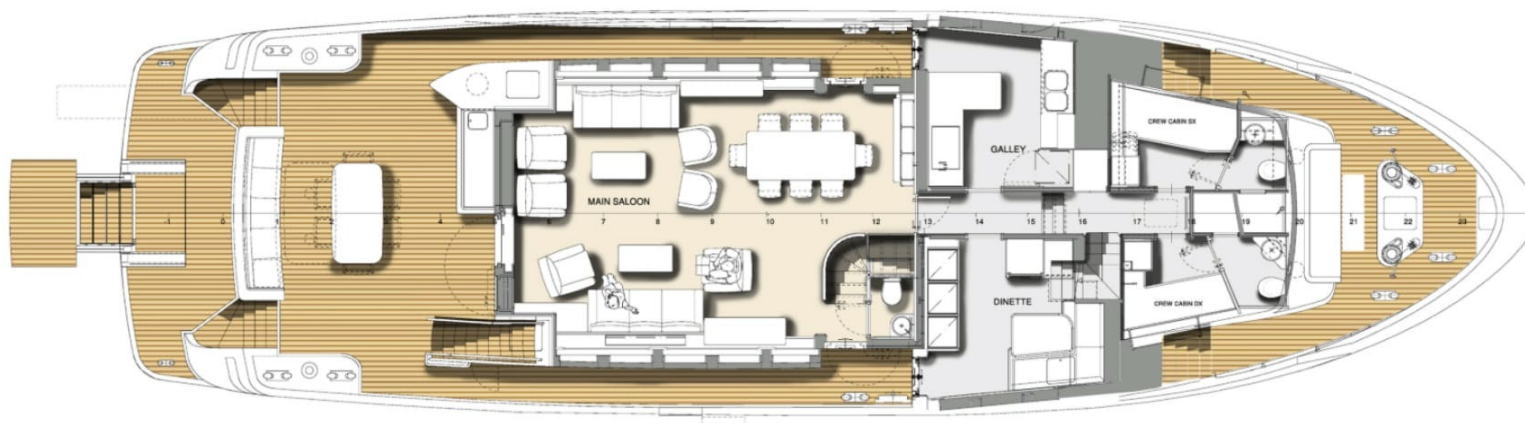
---

---

---

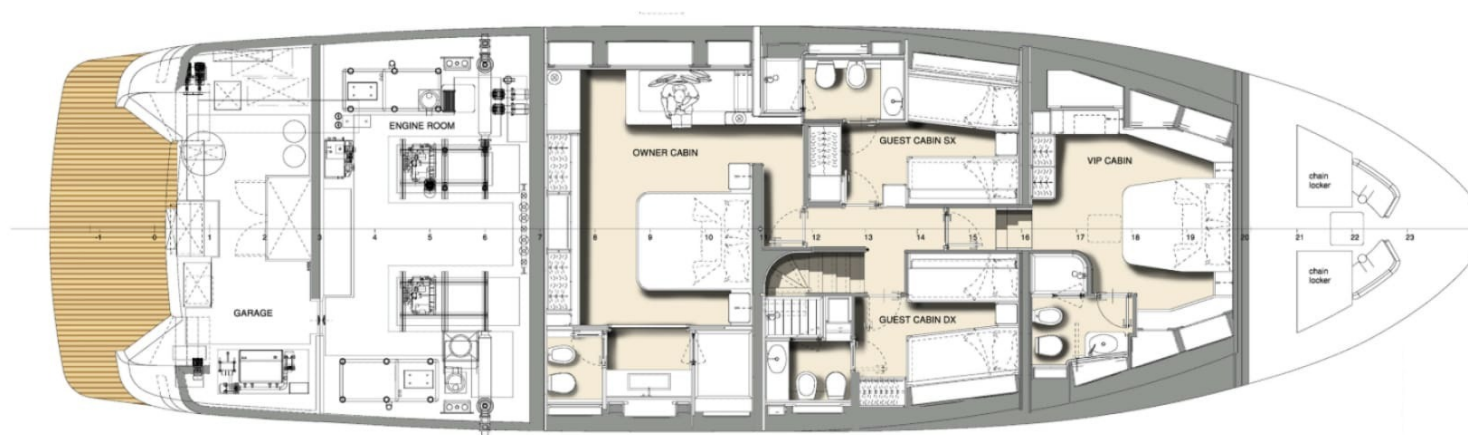
## UPPER DECK





MAIN DECK





LOWER DECK





KIRILL KUATOV

+377 607 93 15 20

+39 333 576 44 44

 [Send e-mail](#)

 WhatsApp

 Telegram