



Brokerage

NAU
YACHTS

ATLAS

MOTOR YACHT

CANTIERE DELLE MARCHE 31.09M

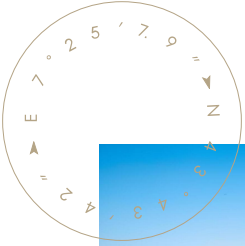
2017

€8,538,462

FLAG -

MOTOR YACHT

ATLAS



ATLAS is a 31-metre **Darwin-class** explorer yacht, delivered in 2017 by **Cantiere delle Marche** and designed by Hydro Tec with interiors by PFA Design. Built with a steel hull and aluminium superstructure, she embodies the ruggedness, seaworthiness, and autonomy required for extended cruising in all seasons.

Powered by twin Caterpillar C18 ACERT engines, **ATLAS** cruises comfortably at 10 knots and reaches a top speed of approximately 13 knots. At an economical speed of 9 knots, she offers an impressive range of up to 4,000 nautical miles. Equipped with CMC zero-speed stabilisers, she ensures excellent stability both underway and at anchor. Her gross tonnage of 244 GT and beam of 7.37 metres provide exceptional onboard volume for a yacht of her size.

ATLAS accommodates up to 10 guests in four staterooms, including a full-beam master suite and three additional guest cabins. The crew area is designed for six staff members, ensuring high service standards and efficiency during long passages. Interiors are contemporary and inviting, with natural materials, soft tones, and large panoramic windows enhancing light and space.

Outdoor living is equally well considered, with a sun deck featuring a Jacuzzi, bar, and sun loungers, as well as a sky lounge on the upper deck for more intimate gatherings. A dedicated garage houses the tender, water toys, and diving equipment, while technical systems include Kohler generators, wastewater treatment, and comprehensive autonomy features in line with LY3 classification.

Professionally maintained and offered in excellent condition, **ATLAS** is a true expedition-ready yacht, ideal for private world cruising or luxury charter adventures.

[see more information about M/Y ATLAS at www.nauyachts.com](http://www.nauyachts.com)

SPECIFICATION

SHIPYARD, MODEL	Cantiere Delle Marche Darwin 102
BUILT	2017
LENGTH	31.09 m
WATERLINE LENGTH	28.03 m
HULL CONFIGURATION	DISPLACEMENT
BEAM	7.37 m
RANGE	4000
DRAFT	2.55 m
GROSS TONNAGE	244 GT
YACHT CLASS	LY3
CABINS	4+3
MASTER CABIN	LOWER DECK
GUESTS	10
BERTHS	10+6
CREW	6
HEADS	5+3

EXTERIOR DESIGN	HYDRO TEC
INTERIOR DESIGN	PFA DESIGN
HULL	STEEL
SUPERSTRUCTURE	ALUMINIUM
ENGINES	2 x Caterpillar C18 670 h.p.
TYPE OF DRIVE	SHAFT LINE
ENGINE HOURS	2903 h
MAXIMUM SPEED	12.9 kn
CRUISING SPEED	10 kn
FUEL CONSUMPTION AT ECONOMICAL SPEED	N/A
FUEL	40000 l
GREY WATER	550 l
BLACK WATER	550 l
FRESH WATER	6000 l
DISPLACEMENT	250

[see more information about M/Y ATLAS at www.nauyachts.com](http://www.nauyachts.com)



EXTERIOR CANTIERE DELLE MARCHE DARWIN
102 2017 MY ATLAS

M/Y ATLAS



EXTERIOR CANTIERE DELLE MARCHE DARWIN
102 2017 MY ATLAS

M/Y ATLAS



AFT MAIN DECK DINING AREA

M/Y ATLAS



AFT MAIN DECK DINING AREA

M/Y ATLAS



AFT UPPER DECK LOUNGE AREA

M/Y ATLAS



AFT UPPER DECK DINING AREA

M/Y ATLAS



AFT UPPER DECK DINING AREA

M/Y ATLAS



AFT UPPER DECK LOUNGE AREA

M/Y ATLAS



BOW LOUNGE AREA

M/Y ATLAS



SUNDECK AFT SUNBATHING AREA

M/Y ATLAS



SUNDECK AFT SUNBATHING AREA

M/Y ATLAS



SUNDECK LOUNGE AREA

M/Y ATLAS



UPPER DECK SALOON

M/Y ATLAS



UPPER DECK SALOON

M/Y ATLAS



MAIN SALON LOUNGE AREA

M/Y ATLAS



MAIN SALON LOUNGE AREA

M/Y ATLAS



MAIN SALON LOUNGE AREA

M/Y ATLAS



MAIN SALON DINING AREA

M/Y ATLAS



MASTER CABIN

M/Y ATLAS



MASTER CABIN

M/Y ATLAS



MASTER CABIN

M/Y ATLAS



MASTER CABIN DRESSING ROOM

M/Y ATLAS



MASTER BATHROOM

M/Y ATLAS



MASTER BATHROOM

M/Y ATLAS



STAIRS FROM MD TO LD

M/Y ATLAS



GUEST CABIN

M/Y ATLAS



GUEST CABIN

M/Y ATLAS



GUEST CABIN

M/Y ATLAS



GUEST CABIN

M/Y ATLAS



GUEST CABIN

M/Y ATLAS



GUEST BATHROOM

M/Y ATLAS



MAIN HELM STATION

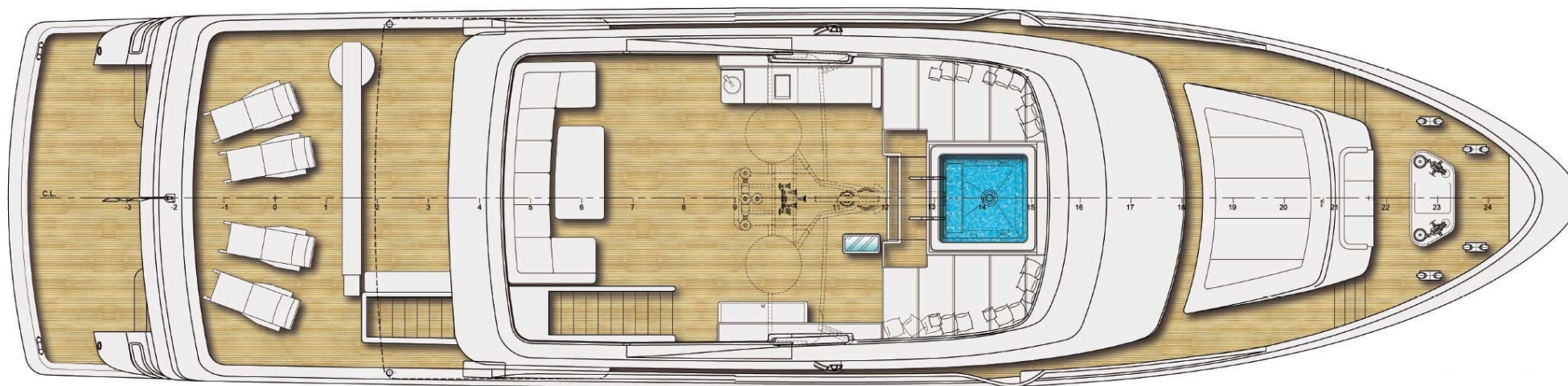
M/Y ATLAS



GALLEY

M/Y ATLAS

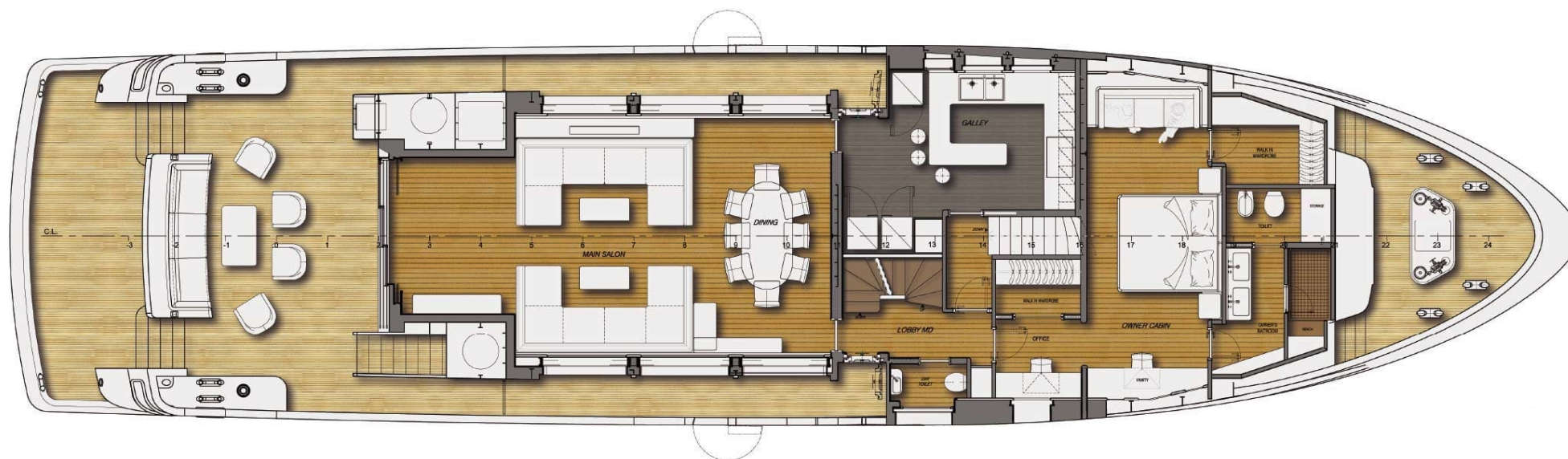
General Arrangement



SUNDECK



UPPER DECK



MAIN DECK



LOWER DECK



KIRILL KUATOV

+377 607 93 15 20

+39 333 576 44 44

 [Send e-mail](#)

 WhatsApp

 Telegram