



Brokerage

NAU
YACHTS

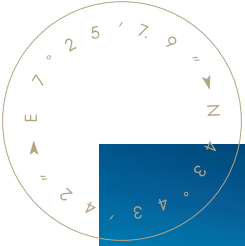
ACALA

MOTOR YACHT CANTIERE DELLE MARCHE 42.9M 2022

€29,995,000
FLAG - CAYMAN ISLANDS

MOTOR YACHT

ACALA



ACALA is a 42.9-metre explorer yacht, delivered in 2022 by **Cantiere delle Marche**. Designed for long-range autonomy and off-the-grid cruising, she features a steel hull and aluminium superstructure, with exterior styling by Horacio Bozzo and naval architecture by Sergio Cutolo (Hydro Tec). Her robust construction and 499 GT volume ensure stability, comfort, and capability in a wide range of sea conditions. Powered by twin Caterpillar C32 engines of 1014 hp each, **ACALA** reaches a top speed of 14 knots, with a cruising speed of 10 knots. At that pace, she offers a remarkable range of up to 5,000 nautical miles, ideal for extended expeditions without the need for frequent refuelling.

ACALA accommodates up to 12 guests across six staterooms, including a full-beam master suite and five additional guest cabins, making her ideal for private family use or charter. The crew quarters are arranged across six cabins for up to 11 crew, allowing for professional-level service during long voyages.

Interior design by Simon Hamui reflects a refined and natural aesthetic, with a calming palette and organic materials that enhance the sense of understated luxury. Generous saloons, panoramic lounges, and well-planned open decks offer a seamless connection with the sea and multiple options for relaxing or entertaining.

ACALA is a true modern expedition yacht — rugged, efficient, and beautifully finished — offering the perfect blend of luxury and capability for those seeking immersive cruising experiences in remote parts of the world.

[see more information about M/Y ACALA at www.nauyachts.com](http://www.nauyachts.com)

SPECIFICATION

| | |
|--------------------|---------------------------|
| SHIPYARD, MODEL | Cantiere Delle Marche 43M |
| BUILT | 2022 |
| LENGTH | 42.9 m |
| WATERLINE LENGTH | 40.35 m |
| HULL CONFIGURATION | DISPLACEMENT |
| BEAM | 8.6 m |
| RANGE | 5000 |
| DRAFT | 2.6 m |
| GROSS TONNAGE | 499 GT |
| YACHT CLASS | LLOYD'S |
| CABINS | 6+6 |
| MASTER CABIN | MAIN DECK |
| GUESTS | 12 |
| BERTHS | 12+11 |
| CREW | 11 |
| HEADS | 7+6 |

| | |
|--------------------------------------|-------------------------------|
| EXTERIOR DESIGN | HORACIO BOZZO DESIGN |
| INTERIOR DESIGN | SIMON HAMUI |
| HULL | STEEL |
| SUPERSTRUCTURE | ALUMINIUM |
| ENGINES | 2 x Caterpillar C32 1014 h.p. |
| TYPE OF DRIVE | SHAFT LINE |
| ENGINE HOURS | N/A |
| MAXIMUM SPEED | 14 kn |
| CRUISING SPEED | 10 kn |
| FUEL CONSUMPTION AT ECONOMICAL SPEED | N/A |
| FUEL | 62400 l |
| GREY WATER | N/A |
| BLACK WATER | N/A |
| FRESH WATER | 11100 l |
| DISPLACEMENT | N/A |

[see more information about M/Y ACALA at www.nauyachts.com](http://www.nauyachts.com)



EXTERIOR CANTIERE DELLE MARCHE 43M
2022 MY ACALA

M/Y ACALA



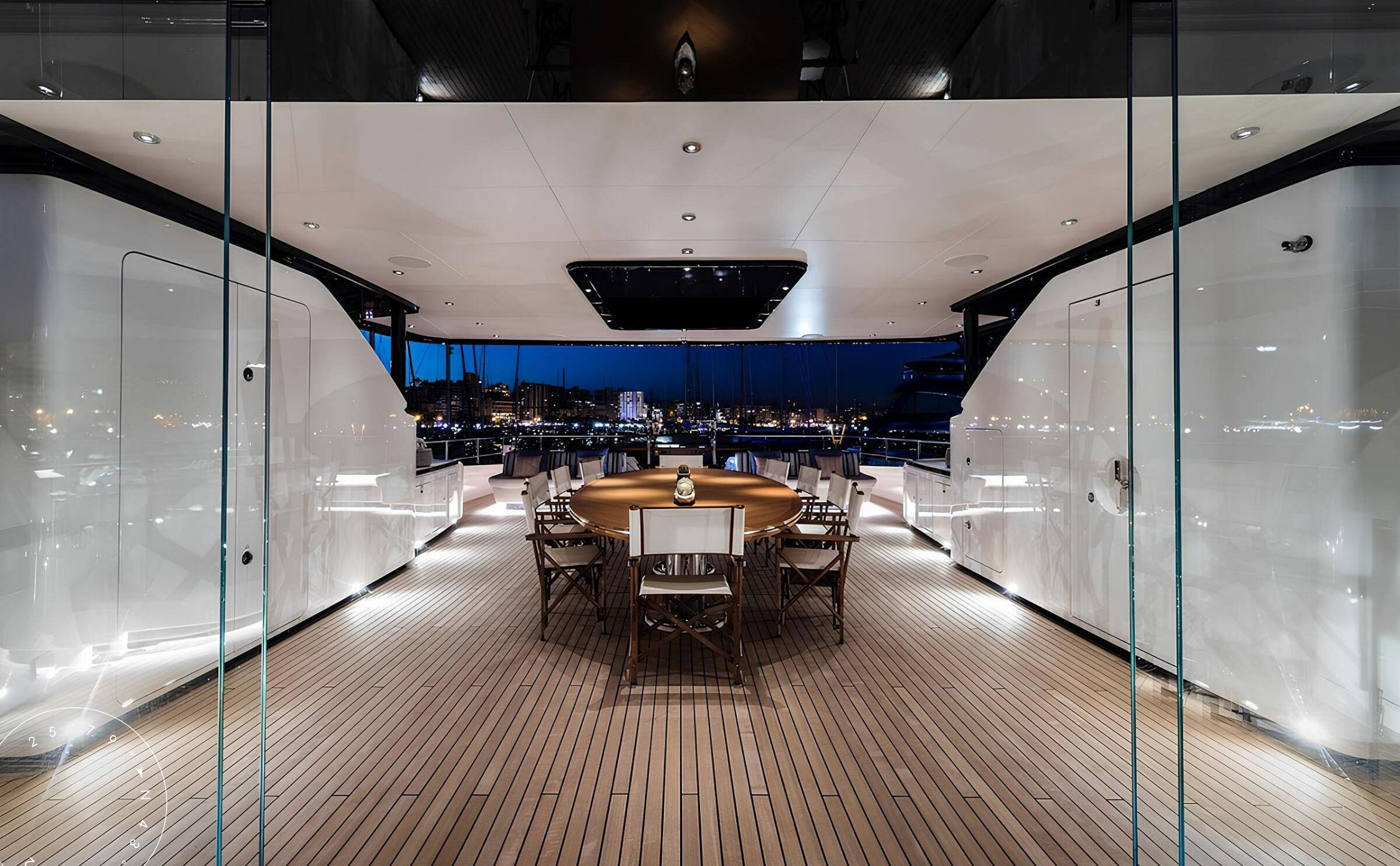
SUNDECK LOUNGE AREA

M/Y ACALA



SUNDECK LOUNGE AREA

M/Y ACALA



SUNDECK DINING AREA

M/Y ACALA



AFT UPPER DECK LOUNGE AREA

M/Y ACALA



AFT UPPER DECK LOUNGE AREA

M/Y ACALA



PORT SIDE

M/Y ACALA



STARBOARD

M/Y ACALA



AFT MAIN DECK LOUNGE AREA

M/Y ACALA



AFT MAIN DECK LOUNGE AREA

M/Y ACALA



AFT MAIN DECK LOUNGE AREA

M/Y ACALA



VIP CABIN

M/Y ACALA





VIP BATHROOM

M/Y ACALA



VIP CABIN

M/Y ACALA



VIP CABIN

M/Y ACALA



VIP CABIN

M/Y ACALA



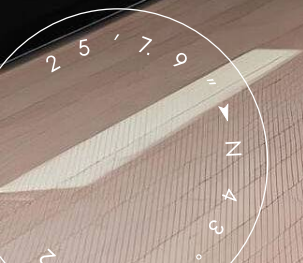
VIP BATHROOM

M/Y ACALA



VIP BATHROOM

M/Y ACALA



UPPER DECK SALOON DINING AREA

M/Y ACALA



UPPER DECK SALOON DINING AREA

M/Y ACALA



UPPER DECK SALOON DINING AREA

M/Y ACALA



GUEST CABIN

M/Y ACALA



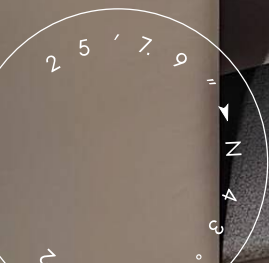
GUEST CABIN

M/Y ACALA



GUEST BATHROOM

M/Y ACALA



GUEST CABIN

M/Y ACALA



MAIN SALON LOUNGE AREA

M/Y ACALA



MAIN SALON LOUNGE AREA

M/Y ACALA



MAIN SALON LOUNGE AREA

M/Y ACALA



MAIN SALON LOUNGE AREA

M/Y ACALA



VIP CABIN

M/Y ACALA



VIP CABIN

M/Y ACALA



VIP CABIN

M/Y ACALA



MASTER CABIN

M/Y ACALA



MASTER CABIN

M/Y ACALA



MASTER CABIN

M/Y ACALA



MASTER BATHROOM

M/Y ACALA



MASTER BATHROOM

M/Y ACALA



MASTER CABIN DRESSING ROOM

M/Y ACALA



MASTER BATHROOM

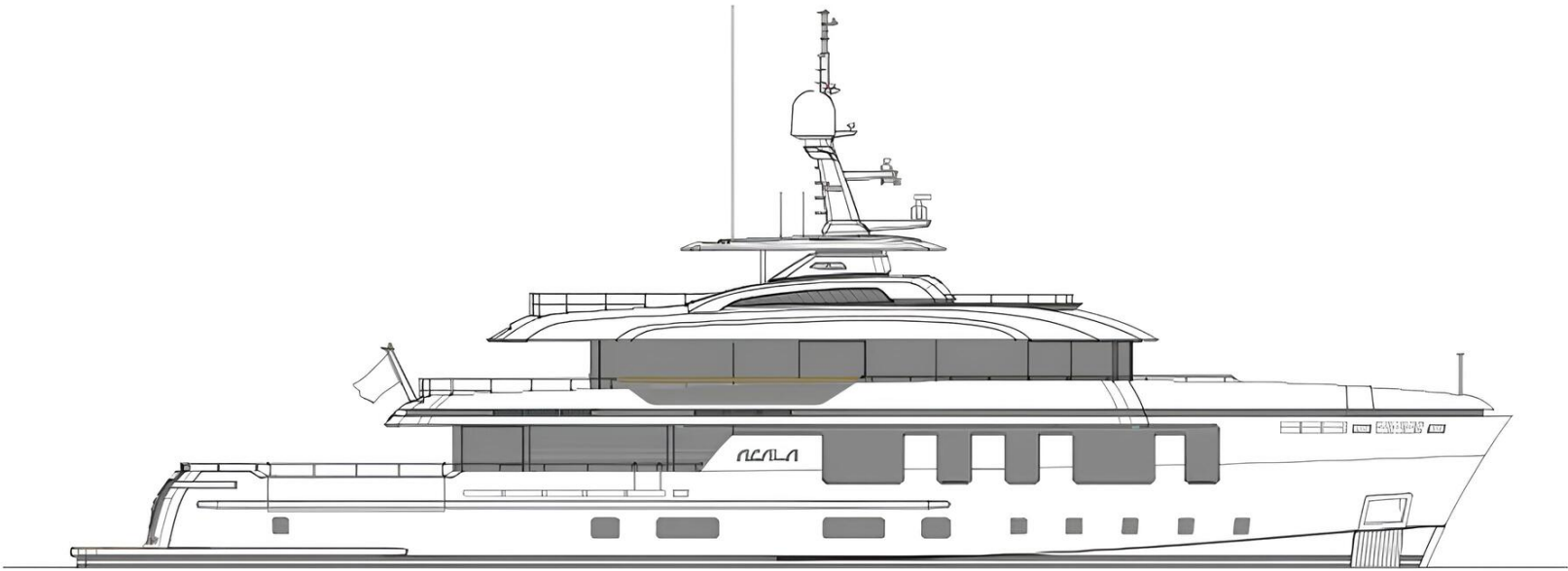
M/Y ACALA



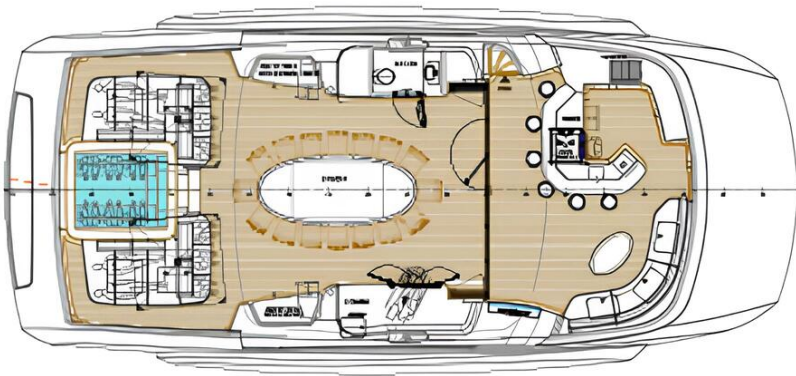
MAIN HELM STATION

M/Y ACALA

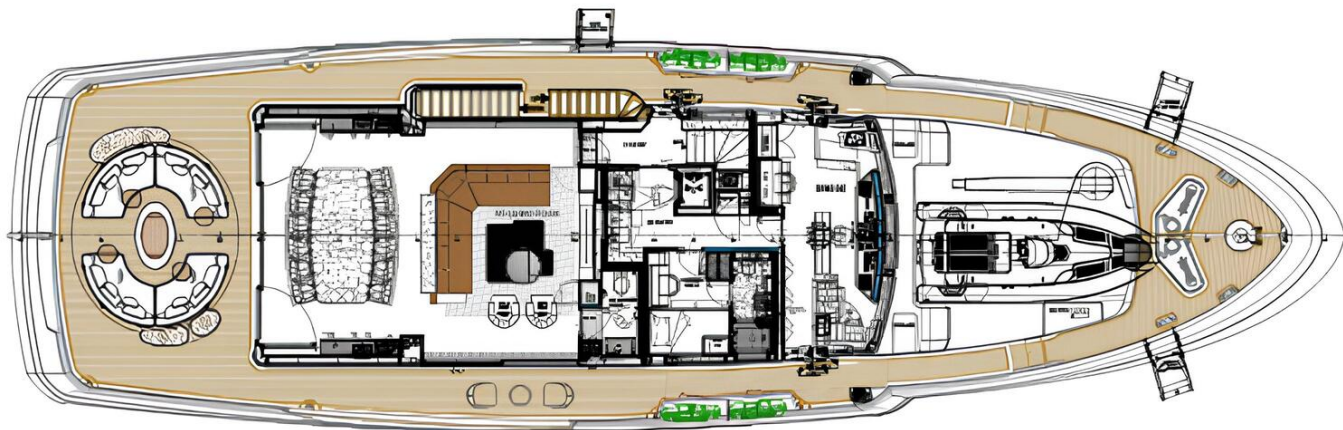
General Arrangement



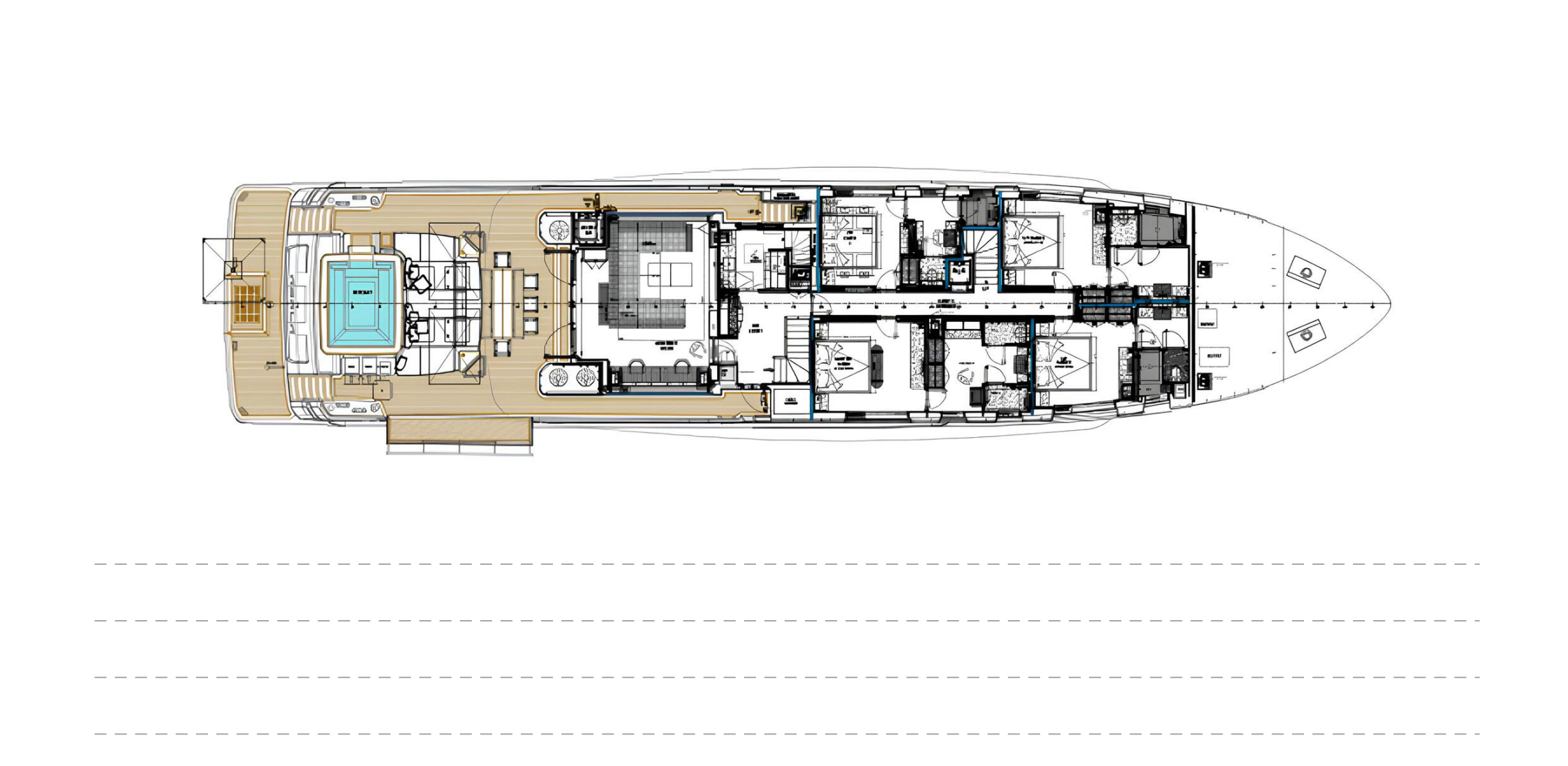
PROFILE

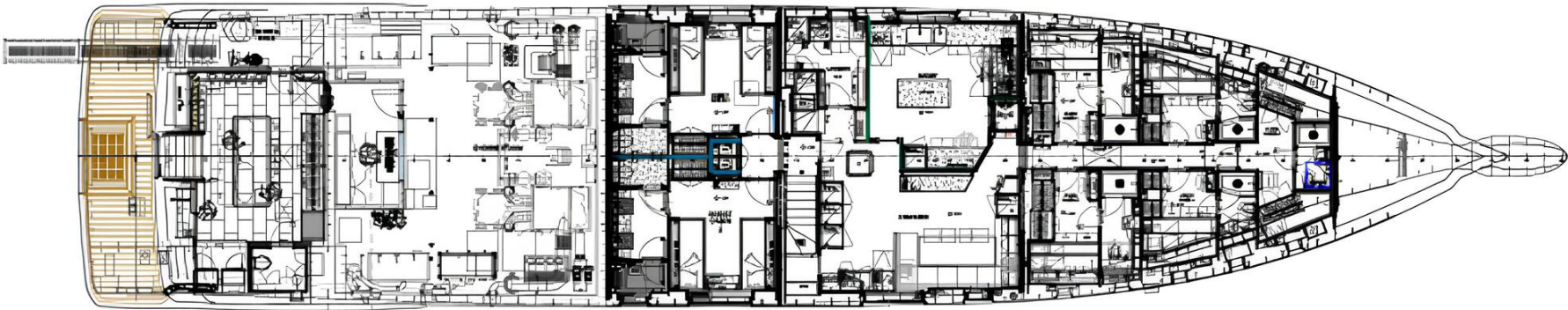


SUNDECK



UPPER DECK





LOWER DECK



KIRILL KUATOV

+377 607 93 15 20

+39 333 576 44 44

 [Send e-mail](#)

 WhatsApp

 Telegram

[More information about M/Y ACALA at www.nauyachts.com](http://www.nauyachts.com)

[Watch video](#)