



New Build

NAU  
YACHTS

ORIGAMI

MOTOR YACHT    CUSTOM BUILT 65M    2027

€48,000,000  
FLAG - CAYMAN ISLAND

MOTOR YACHT

# ORIGAMI



**ORIGAMI** is far more than a typical support yacht. Built by Spanish shipyard **Astilleros Armon** and designed by Kirsten Schwalgien Yacht Design, this 65-meter vessel commands attention from the first glance. Its sharply angular aluminum hull references the Japanese art of origami, where every fold is both aesthetically and structurally significant. The bold exterior is not just eye-catching - it embodies strength, seaworthiness, and functional intent.

With a beam of 12.1 meters and substantial fuel capacity, **ORIGAMI** is built for extended autonomous operation. Twin MTU 16V4000 M73L engines deliver a top speed of 21 knots, while selective catalytic reduction (SCR) systems ensure compliance with IMO Tier III standards, reinforcing the yacht's environmentally responsible design. Constructed to Lloyd's Register standards as a support vessel and certified for helideck operations, **ORIGAMI** delivers uncompromising technical performance.

Helicopter functionality is central to her concept. The vessel features a fully certified landing pad and an enclosed hangar capable of housing an Airbus H135 without folding the rotor blades - ideal for expeditions, charter support, or mothership logistics where rapid deployment is key.

The main deck offers a vast and versatile space suitable for tenders, containers, submersibles, heavy toys, or mission-specific equipment. Integrated Ferri Beam cranes streamline loading and unloading, and the available stowage capacity rivals that of much larger expedition vessels.

Accommodations are provided for 22 crew across 12 en suite cabins, including a captain's cabin. The vessel also includes a spacious crew mess, a professional-grade galley, medical room, gym, workshop, and a dedicated AV/IT control suite. All spaces are served by a high-performance Turbocor chiller-based HVAC system, ensuring comfort in climates ranging from polar to tropical.

The interiors are modular and fully adaptable, allowing reconfiguration into guest quarters, technical labs, or operational support areas - tailored to suit scientific missions, private exploration, or superyacht logistics. **ORIGAMI** is a rugged, intelligent platform designed to support the boldest adventures without compromising comfort, capability, or design.

[see more information about M/Y ORIGAMI at www.nauyachts.com](http://www.nauyachts.com)

# SPECIFICATION

SHIPYARD, MODEL	Custom Built 65M
DELIVERY AT THE SHIPYARD	2027
LENGTH	65 m
WATERLINE LENGTH	62.2 m
HULL CONFIGURATION	SEMI-DISPLACEMENT
BEAM	12.1 m
RANGE	N/A
DRAFT	3.2 m
GROSS TONNAGE	2000 GT
YACHT CLASS	LLOYD'S
CABINS	12
MASTER CABIN	LOWER DECK
GUESTS	N/A
BERTHS	22
CREW	22
HEADS	12

EXTERIOR DESIGN	KIRSTEN SCHWALGIEN YACHT DESIGN
INTERIOR DESIGN	KIRSTEN SCHWALGIEN YACHT DESIGN
HULL	ALUMINUM
SUPERSTRUCTURE	ALUMINIUM
ENGINES	2 x MTU 16V4000
TYPE OF DRIVE	SHAFT LINE
ENGINE HOURS	N/A
MAXIMUM SPEED	21 kn
CRUSING SPEED	16 kn
FUEL CONSUMPTION AT ECONOMICAL SPEED	~ 200 l/h
FUEL	7000 l
GREY WATER	N/A
BLACK WATER	N/A
FRESH WATER	20000 l
DISPLACEMENT	N/A

[see more information about M/Y ORIGAMI at www.nauyachts.com](http://www.nauyachts.com)





EXTERIOR ASTILLEROS ARMON 2027 MY  
ORIGAMI

M/Y ORIGAMI





EXTERIOR ASTILLEROS ARMON 2027 MY  
ORIGAMI

M/Y ORIGAMI





EXTERIOR ASTILLEROS ARMON 2027 MY  
ORIGAMI

M/Y ORIGAMI





EXTERIOR ASTILLEROS ARMON 2027 MY  
ORIGAMI

M/Y ORIGAMI





EXTERIOR ASTILLEROS ARMON 2027 MY  
ORIGAMI

M/Y ORIGAMI





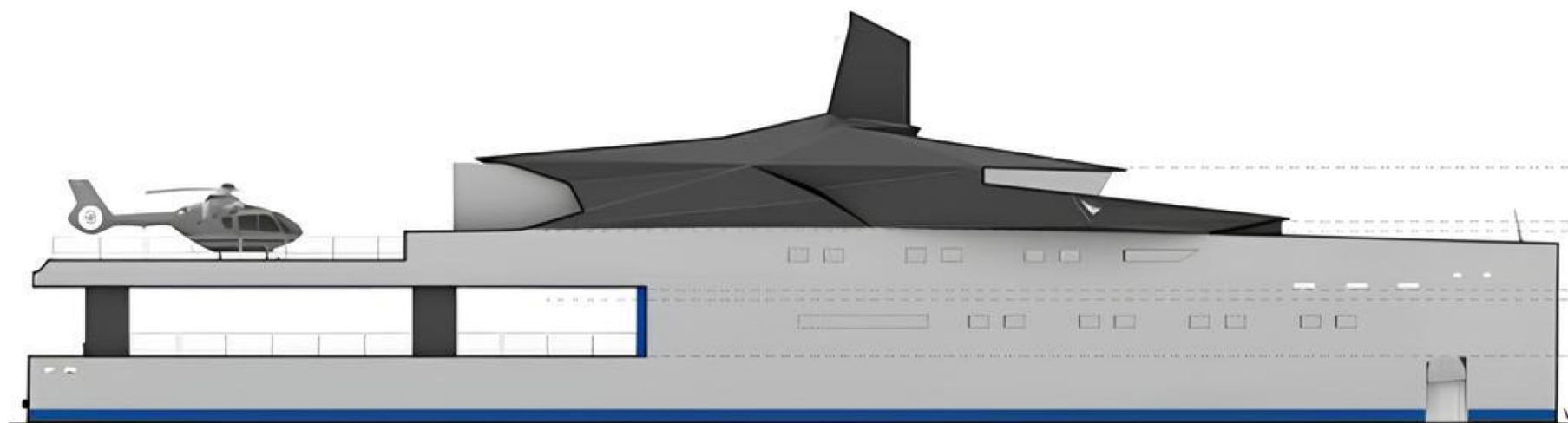
EXTERIOR ASTILLEROS ARMON 2027 MY  
ORIGAMI

M/Y ORIGAMI



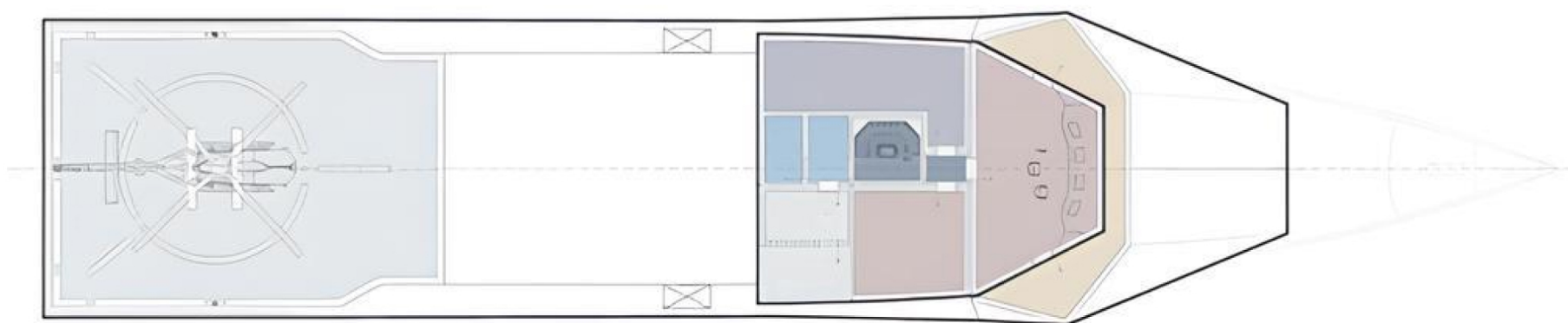
# General Arrangement



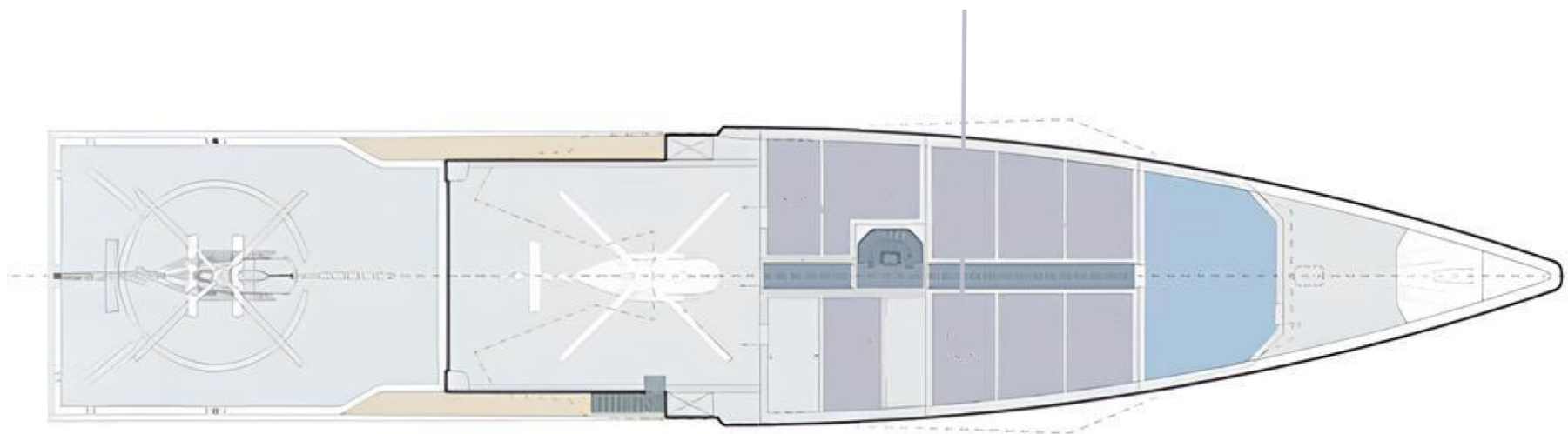


PROFILE





SUNDECK

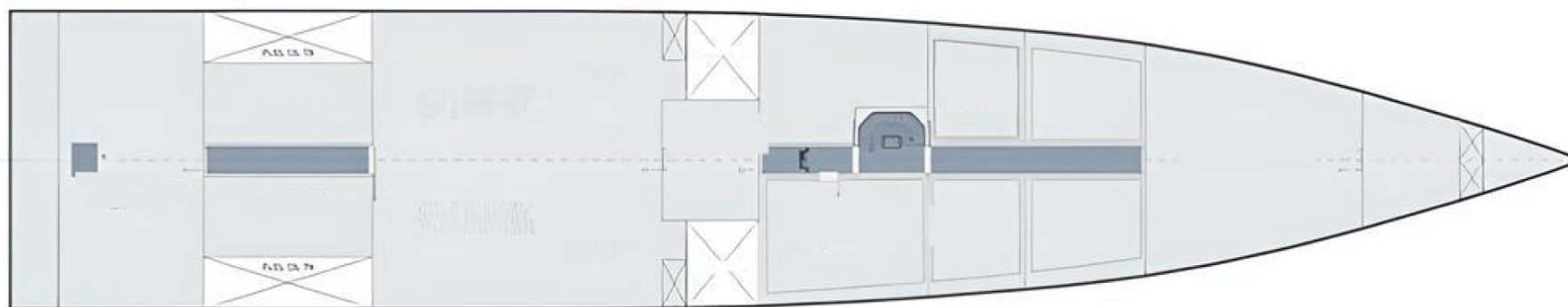


UPPER DECK





MAIN DECK



LOWER DECK





KRISTINA KRAM

+377 678 63 33 13

Send e-mail

WhatsApp

Telegram

[More information about M/Y ORIGAMI at www.nauyachts.com](http://www.nauyachts.com)