



New Build

NAU
YACHTS

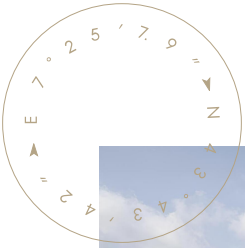
CROSSOVER 27

MOTOR YACHT LYNX 27.4M 2026

FLAG -

MOTOR YACHT

CROSSOVER 27



CROSSOVER 27M by Lynx Yachts is a 27.4-meter motor yacht that blends the practicality of the YXT explorer series with the comfort and refined styling of the **Adventure** line. Launched in 2022, it is the first model in a new range designed for owners who value both technical capability and elevated interior design. Built with a steel displacement hull and featuring a wide 70-square-meter main deck, the yacht offers flexible usage options — from storing tenders and water toys to creating a spacious open-air lounge. With a cruising speed of 12 knots and a top speed of 14 knots, and thanks to a fuel capacity of around 18,000 liters, **CROSSOVER 27M** is well suited for long-range journeys and autonomous cruising. The interiors are designed in a clean, contemporary style and accommodate up to six guests across three cabins. Large windows allow natural light to flood the saloon, while the layout includes both dining and relaxation areas. The flybridge offers 360-degree views and combines navigation functions with lounge space, serving equally well as an observation deck or a private retreat. Crew accommodations include two cabins for four, with technical and guest areas arranged to support smooth operation during both short trips and extended voyages.

[see more information about M/Y Crossover 27 at www.nauyachts.com](http://www.nauyachts.com)

SPECIFICATION

SHIPYARD, MODEL	Lynx Crossover 27
BUILT	2026
LENGTH	27.4 m
WATERLINE LENGTH	26.25 m
HULL CONFIGURATION	DISPLACEMENT
BEAM	7.1 m
RANGE	3000
DRAFT	1.9 m
GROSS TONNAGE	110 GT
YACHT CLASS	BUREAU VERITAS
CABINS	3+2
MASTER CABIN	LOWER DECK
GUESTS	6
BERTHS	6+4
CREW	5
HEADS	3+2

EXTERIOR DESIGN	BERND WEEL
INTERIOR DESIGN	LYNX YACHTS
HULL	STEEL
SUPERSTRUCTURE	ALUMINIUM
ENGINES	2 x Caterpillar C12.9
TYPE OF DRIVE	SHAFT LINE
ENGINE HOURS	N/A
MAXIMUM SPEED	14 kn
CRUSING SPEED	12 kn
FUEL CONSUMPTION AT ECONOMICAL SPEED	~ 320 l/h
FUEL	15300 l
GREY WATER	N/A
BLACK WATER	N/A
FRESH WATER	4000 l
DISPLACEMENT	120

[see more information about M/Y Crossover 27 at www.nauyachts.com](http://www.nauyachts.com)



EXTERIOR LYNX CROSSOVER 27M 2026

M/Y CROSSOVER 27



EXTERIOR LYNX CROSSOVER 27M 2026

M/Y CROSSOVER 27



EXTERIOR LYNX CROSSOVER 27M 2026

M/Y CROSSOVER 27



EXTERIOR LYNX CROSSOVER 27M 2026

M/Y CROSSOVER 27



EXTERIOR LYNX CROSSOVER 27M 2026

M/Y CROSSOVER 27



EXTERIOR LYNX CROSSOVER 27M 2026

M/Y CROSSOVER 27



EXTERIOR LYNX CROSSOVER 27M 2026

M/Y CROSSOVER 27



EXTERIOR LYNX CROSSOVER 27M 2026

M/Y CROSSOVER 27



EXTERIOR LYNX CROSSOVER 27M 2026

M/Y CROSSOVER 27



EXTERIOR LYNX CROSSOVER 27M 2026

M/Y CROSSOVER 27



AFT MAIN DECK LOUNGE AREA

M/Y CROSSOVER 27



AFT MAIN DECK LOUNGE AREA

M/Y CROSSOVER 27



AFT MAIN DECK LOUNGE AREA

M/Y CROSSOVER 27



AFT MAIN DECK STORAGE AREA

M/Y CROSSOVER 27



BOW LOUNGE AREA

M/Y CROSSOVER 27



FLYBRIDGE LOUNGE AREA

M/Y CROSSOVER 27



MAIN SALON LOUNGE AREA

M/Y CROSSOVER 27



MASTER CABIN

M/Y CROSSOVER 27



MASTER BATHROOM

M/Y CROSSOVER 27



GUEST CABIN

M/Y CROSSOVER 27



GUEST CABIN

M/Y CROSSOVER 27



GUEST BATHROOM

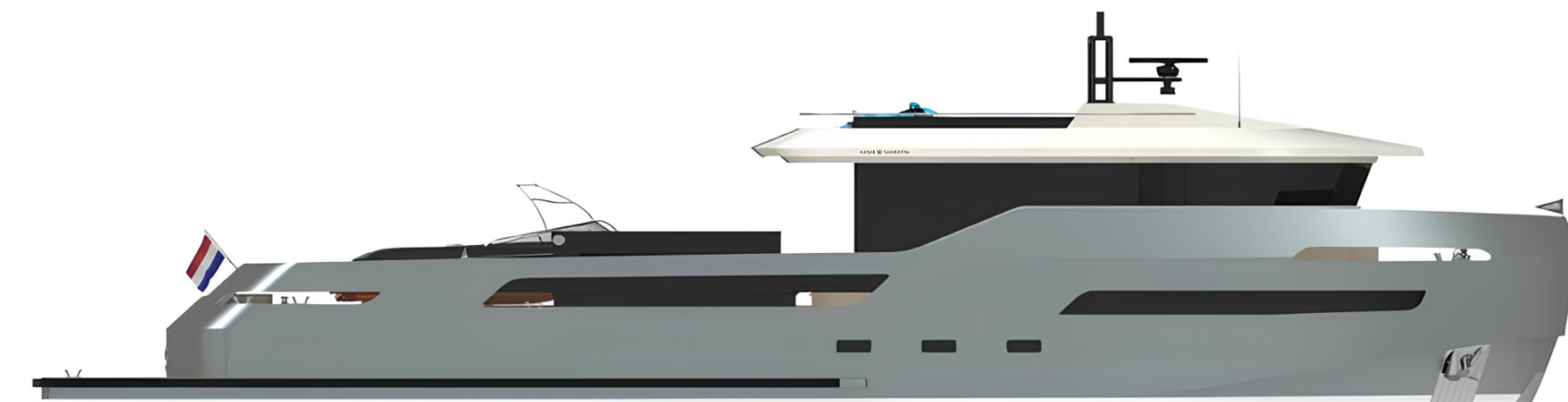
M/Y CROSSOVER 27



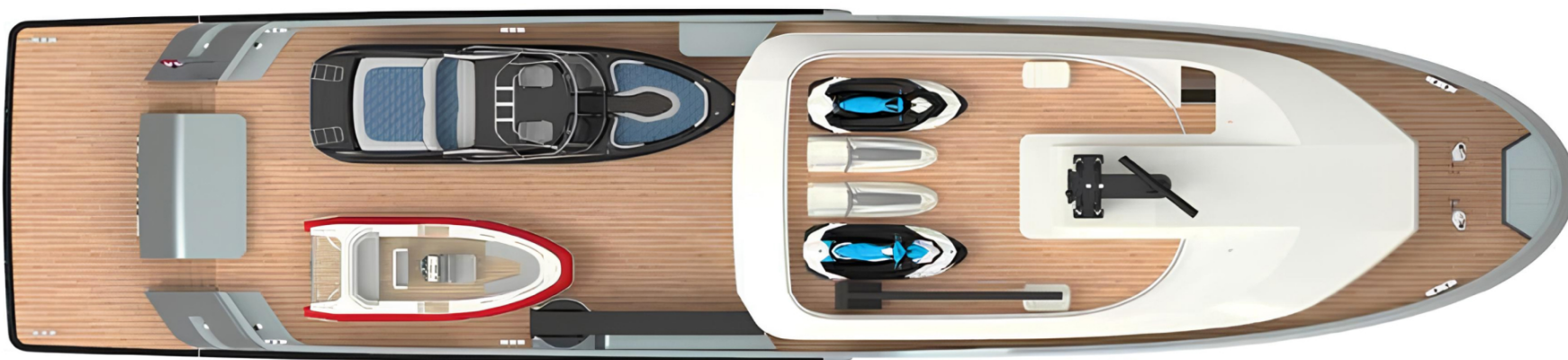
GARAGE

M/Y CROSSOVER 27

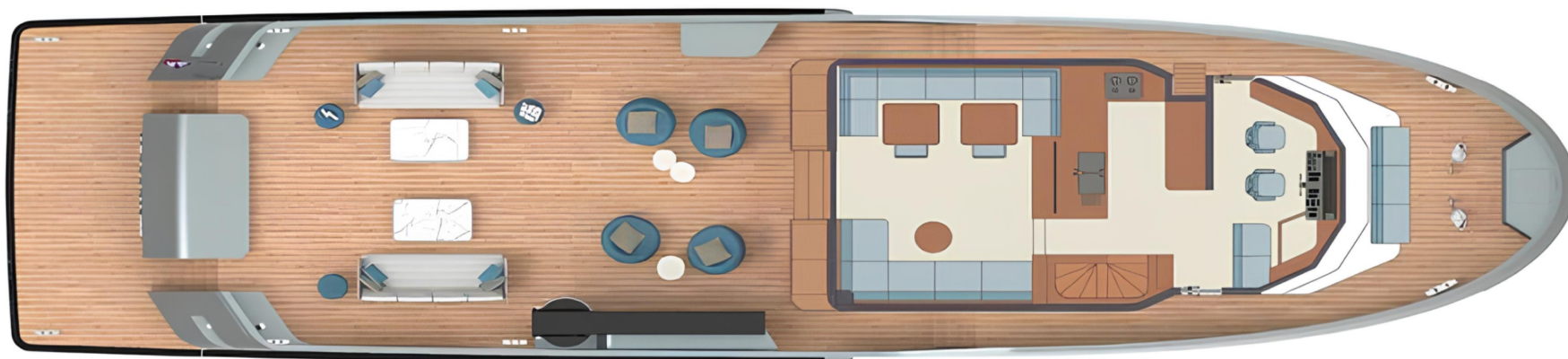
General Arrangement



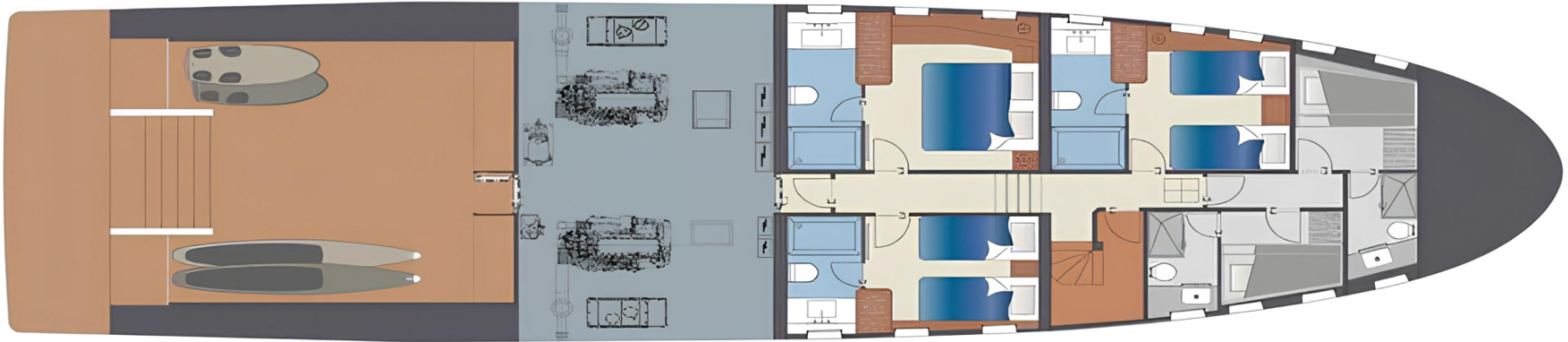
PROFILE



FLYBRIDGE



MAIN DECK



LOWER DECK



KIRILL KUATOV

+377 607 93 15 20

+39 333 576 44 44

 [Send e-mail](#)

 WhatsApp

 Telegram