



New Build

NAU
YACHTS

YXT 34

MOTOR YACHT LYNX 33.8M 2026

FLAG -

MOTOR YACHT

YXT 34



YXT 34, built by **Lynx Yachts**, is a robust and versatile 33.8-meter support vessel designed for active owners who value durability, high performance, and maximum functionality. This yacht serves as a dynamic platform for exploration and tender support, offering extensive storage capacity and customization options. The main deck spans an impressive 145 square meters, covered with durable non-slip material, providing virtually unlimited space for carrying a wide range of equipment. It can accommodate a large RIB, a tender, four WaveRunner jet skis, and even a submarine simultaneously. Additionally, the deck can be used to transport containers with spare parts. A panoramic 360-degree view from this deck greatly enhances navigation and maneuvering, especially in marinas and confined spaces. **YXT 34** is equipped with a powerful crane capable of lifting up to 15.2 tons at 3.5 meters height and 4.2 tons at 11.4 meters, ensuring safe and efficient handling of heavy equipment and gear. The lower deck houses three multifunctional cabins of 14.5 square meters each, which can be adapted to meet the owner's specific requirements. One of the configurations includes a fully equipped laundry area with ironing stations, washers, dryers, and a cold storage room. The aft machinery space features a spacious 62-square-meter garage designed to store inflatable toys, surfboards, kayaks, and diving equipment. With a gross tonnage of 199 tons, a beam of 8.85 meters, and a fuel capacity of 52,000 liters, **YXT 34** showcases unmatched capabilities as a support vessel, combining elegant design with maximum practicality and reliability.

[see more information about M/Y YXT 34 at www.nauyachts.com](http://www.nauyachts.com)

SPECIFICATION

SHIPYARD, MODEL	Lynx YXT 34
BUILT	2026
LENGTH	33.8 m
WATERLINE LENGTH	31.8 m
HULL CONFIGURATION	DISPLACEMENT
BEAM	8.85 m
RANGE	4100
DRAFT	2.25 m
GROSS TONNAGE	199 GT
YACHT CLASS	BUREAU VERITAS
CABINS	2+1
MASTER CABIN	LOWER DECK
GUESTS	2
BERTHS	4+2
CREW	4
HEADS	2+1

EXTERIOR DESIGN	BERND WEEL DESIGN
INTERIOR DESIGN	LYNX YACHTS
HULL	STEEL
SUPERSTRUCTURE	ALUMINIUM
ENGINES	2 x Caterpillar 1350 h.p.
TYPE OF DRIVE	SHAFT LINE
ENGINE HOURS	N/A
MAXIMUM SPEED	16 kn
CRUISING SPEED	14 kn
FUEL CONSUMPTION AT ECONOMICAL SPEED	~ 760 l/h
FUEL	52000 l
GREY WATER	2000 l
BLACK WATER	2000 l
FRESH WATER	N/A
DISPLACEMENT	230

[see more information about M/Y YXT 34 at www.nauyachts.com](http://www.nauyachts.com)



EXTERIOR LYNX YXT 34 2027

M/Y YXT 34



EXTERIOR LYNX YXT 34 2027

M/Y YXT 34



EXTERIOR LYNX YXT 34 2027

M/Y YXT 34



AFT MAIN DECK STORAGE AREA

M/Y YXT 34



AFT MAIN DECK STORAGE AREA

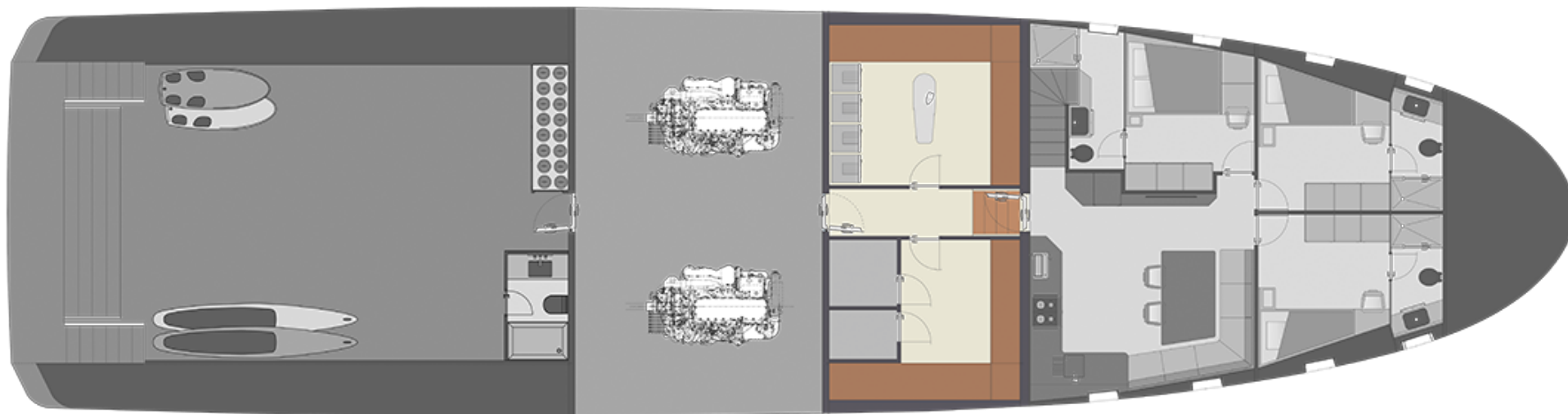
M/Y YXT 34



AFT MAIN DECK STORAGE AREA

M/Y YXT 34

General Arrangement




LOWER DECK



KIRILL KUATOV

+377 607 93 15 20

+39 333 576 44 44

 [Send e-mail](#)

 WhatsApp

 Telegram