



New Build

NAU
YACHTS

SL120 ASYMMETRIC

FLAG -

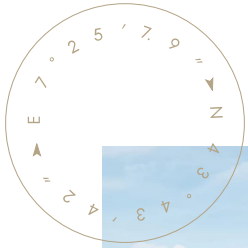
MOTOR YACHT

SANLORENZO 36.92M

2027

MOTOR YACHT

SL120 ASYMMETRIC



Having revolutionized marine design with the world's first asymmetric yacht, **Sanlorenzo** continues to take the asymmetric concept to new expressive heights: space, comfort, functional quality, flexibility in the use of spaces all combine in the **SL120Asymmetric** yacht, **Sanlorenzo's** new offering.

The **SL120Asymmetric** is the new flagship of **Sanlorenzo's Asymmetric** series, a 36.92-meter gliding model that will make its official debut at the 2021 Cannes Yachting Festival. With this model, **Sanlorenzo** once again demonstrates its particular talent for working on the concept of space and shaping it as it sees fit to guarantee maximum comfort on board. In this model, Sanlorenzo has applied an asymmetrical configuration only in the main deck living area, extending from the cockpit to the center of the vessel.

First of all, this choice allows this area to be extended by 8 square meters, eliminating the starboard deck and maximizing the connection with the sea by creating a spacious dining area on one side, with full-height glazing, and a living area on the other side, which opens onto a balcony thanks to a sliding door and an outdoor terrace. This also allows full utilization of the interior space of the adjacent forward area, where the owner's cabin is located, which extends the full width of the hull.

Another fundamental design feature of the **SL120Asymmetric** is the organization of the open spaces. For example, the open lounge area forward of the yacht is located on two decks connected by a staircase, with direct access from the owner's cabin. It is a 15 square meter space conceived for different purposes: while the fore deck is fully equipped as a large sunbathing area, the upper deck has a table for outdoor dining. In addition, the C-shaped sofa can be replaced by a Jacuzzi.

Full connection to the sea and the convenience of open spaces reach their peak in the aft area of the lower deck. The garage can be transformed into a wonderful 45 sqm beach club thanks to the folding terraces, offering guests comfortable access to the sea.

[see more information about M/Y SL120 Asymmetric at www.nauyachts.com](http://www.nauyachts.com)

SPECIFICATION

SHIPYARD, MODEL	Sanlorenzo SL120 Asymmetric
DELIVERY AT THE SHIPYARD	2027
LENGTH	36.92 m
WATERLINE LENGTH	30.4 m
HULL CONFIGURATION	SEMI-DISPLACEMENT
BEAM	7.49 m
RANGE	1400
DRAFT	2.25 m
GROSS TONNAGE	279 GT
YACHT CLASS	RINA
CABINS	5+3
MASTER CABIN	MAIN DECK
GUESTS	10
BERTHS	10+6
CREW	6
HEADS	6

EXTERIOR DESIGN	ZUCCON INTERNATIONAL PROJECT
INTERIOR DESIGN	SANLORENZO
HULL	GRP
SUPERSTRUCTURE	GRP
ENGINES	2 x MTU 16V 2637 h.p.
TYPE OF DRIVE	SHAFT LINE
ENGINE HOURS	N/A
MAXIMUM SPEED	27 kn
CRUISING SPEED	23 kn
FUEL CONSUMPTION AT ECONOMICAL SPEED	~ 420 l/h
FUEL	19900 l
GREY WATER	2350 l
BLACK WATER	1100 l
FRESH WATER	4200 l
DISPLACEMENT	175

[see more information about M/Y SL120 Asymmetric at www.nauyachts.com](http://www.nauyachts.com)



EXTERIOR

M/Y SL120 ASYMMETRIC



EXTERIOR

M/Y SL120 ASYMMETRIC



EXTERIOR

M/Y SL120 ASYMMETRIC



EXTERIOR

M/Y SL120 ASYMMETRIC



FLYBRIDGE

M/Y SL120 ASYMMETRIC



LOUNGE AREA ON THE BOW

M/Y SL120 ASYMMETRIC



AFT LOUNGE AREA MAIN DECK

M/Y SL120 ASYMMETRIC



STERN

M/Y SL120 ASYMMETRIC



FOLDING TERRACES FROM THE BEACH CLUB

M/Y SL120 ASYMMETRIC



BEACH CLUB

M/Y SL120 ASYMMETRIC



MAIN SALOON

M/Y SL120 ASYMMETRIC



LOUNGE AREA IN THE MAIN SALON

M/Y SL120 ASYMMETRIC



FOLDING BALCONY IN THE MAIN SALON

M/Y SL120 ASYMMETRIC



LOUNGE AREA IN THE MAIN SALON

M/Y SL120 ASYMMETRIC



MASTER CABIN

M/Y SL120 ASYMMETRIC



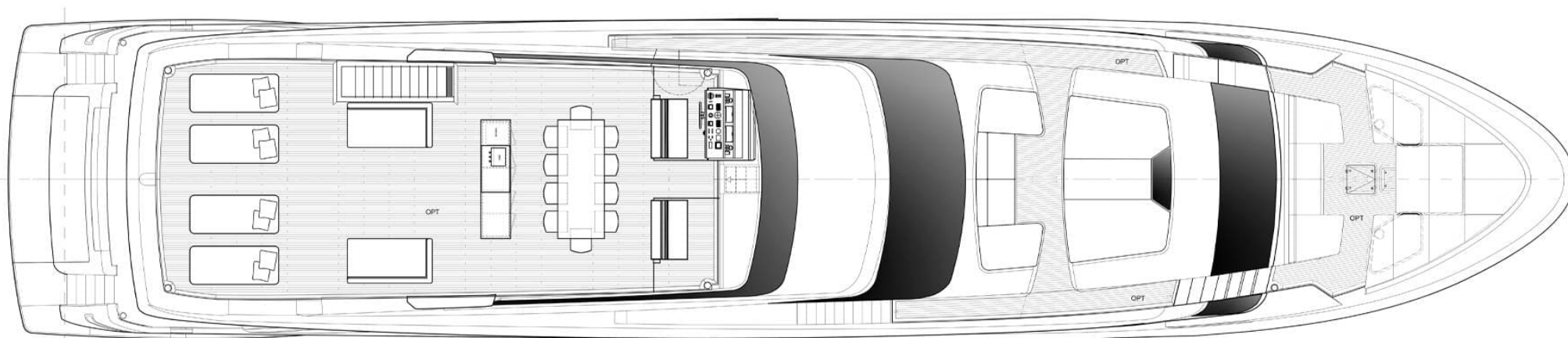
MASTER CABIN

M/Y SL120 ASYMMETRIC

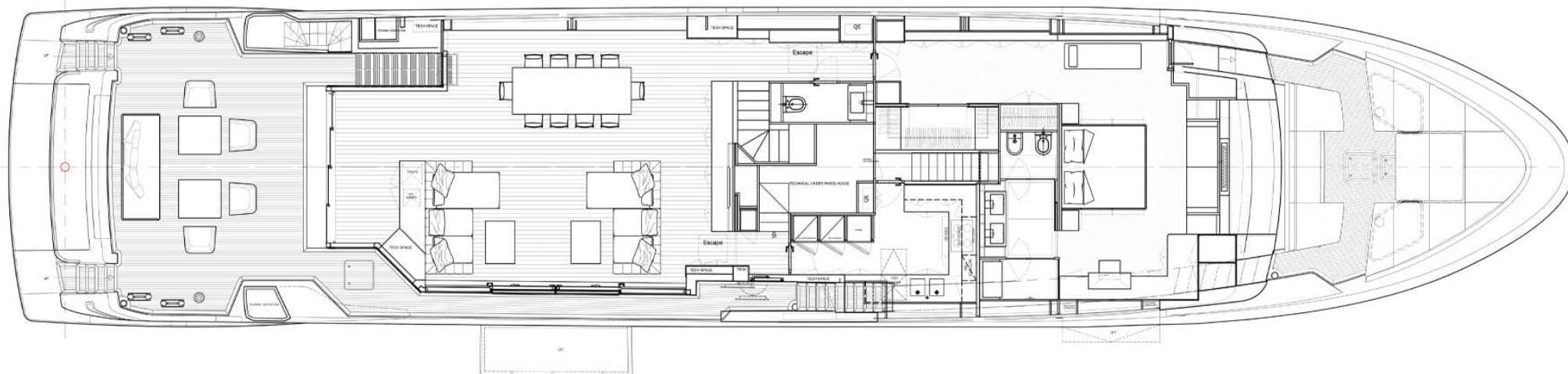
General Arrangement



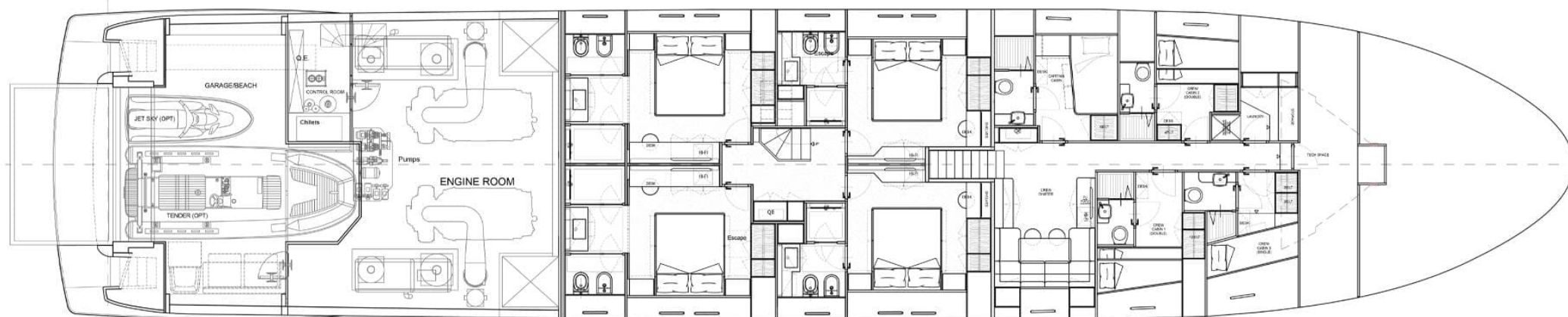
PROFILE



FLYBRIDGE



MAIN DECK



LOWER DECK



KIRILL KUATOV

+377 607 93 15 20

+39 333 576 44 44

 [Send e-mail](#)

 WhatsApp

 Telegram

[More information about M/Y SL120 Asymmetric at www.nauyachts.com](#)

[Watch video](#)