



New Build

NAU
YACHTS

GRANDE TRIDECK

MOTOR YACHT

AZIMUT 38.22M

2027

FLAG -

MOTOR YACHT

GRANDE TRIDECK

The 38.2-meter **Azimut Grande Trideck** is a model from **Azimut Yachts**, with exterior design by **Alberto Mancini** and interior by **Achille Salvagni**. **Grande Trideck** can accommodate up to 10 guests and 6 crew members. The yacht is characterized by an innovative layout: the beach club is located where the tender garage has traditionally been, making the connection with the sea more intimate. On the main deck there is a spacious dining and lounge area aft, while forward there is a large terrace ideal for sunbathing.

Azimut Grande 38 Trideck offers a layout of 5 or 6 well-appointed cabins that can accommodate 10 or 12 guests. The master stateroom is on the main deck and the four guest cabins are on the lower deck. The 6 cabin layout allows for an additional VIP cabin on the upper deck, while the master stateroom is forward on the lower deck. A more standard layout is also possible, with an enclosed storage room and captain's cabin on the upper deck aft. It all depends on the owner's preferences.

The **Azimut Grande 38 Trideck** is also available with two MTU diesel engines of 2,400 horsepower each or an even more powerful 2,600 horsepower. Equipped with two MTU diesel engines of 2,400 horsepower each, the yacht can reach speeds of up to 23 knots, and with the more powerful engines, the flagship can reach 24 knots. At economical speed, the 38 Trideck can cover 1,800 nautical miles on a 22,500-liter fuel tank.

[see more information about M/Y Grande Trideck at www.nauyachts.com](http://www.nauyachts.com)

SPECIFICATION

SHIPYARD, MODEL	Azimut Grande Trideck
DELIVERY AT THE SHIPYARD	2027
LENGTH	38.22 m
WATERLINE LENGTH	34.44 m
HULL CONFIGURATION	SEMI-DISPLACEMENT
BEAM	7.87 m
RANGE	1650
DRAFT	2.05 m
GROSS TONNAGE	299 GT
YACHT CLASS	RINA
CABINS	6+4
MASTER CABIN	MAIN DECK
GUESTS	10
BERTHS	10+6
CREW	6
HEADS	7+4

EXTERIOR DESIGN	ALBERTO MANCINI
INTERIOR DESIGN	ACHILLE SALVAGNI ARCHITETTI
HULL	GRP
SUPERSTRUCTURE	CARBON FIBRE
ENGINES	2 x MTU 2400 h.p.
TYPE OF DRIVE	SHAFT LINE
ENGINE HOURS	N/A
MAXIMUM SPEED	23 kn
CRUISING SPEED	19 kn
FUEL CONSUMPTION AT ECONOMICAL SPEED	N/A
FUEL	22500 l
GREY WATER	1830 l
BLACK WATER	1530 l
FRESH WATER	4000 l
DISPLACEMENT	190

[see more information about M/Y Grande Trideck at www.nauyachts.com](http://www.nauyachts.com)



EXTERIOR AZIMUT GRANDE TRIDECK NEW

M/Y GRANDE TRIDECK



EXTERIOR AZIMUT GRANDE TRIDECK NEW

M/Y GRANDE TRIDECK



EXTERIOR AZIMUT GRANDE TRIDECK NEW

M/Y GRANDE TRIDECK



EXTERIOR AZIMUT GRANDE TRIDECK NEW

M/Y GRANDE TRIDECK



STERN

M/Y GRANDE TRIDECK



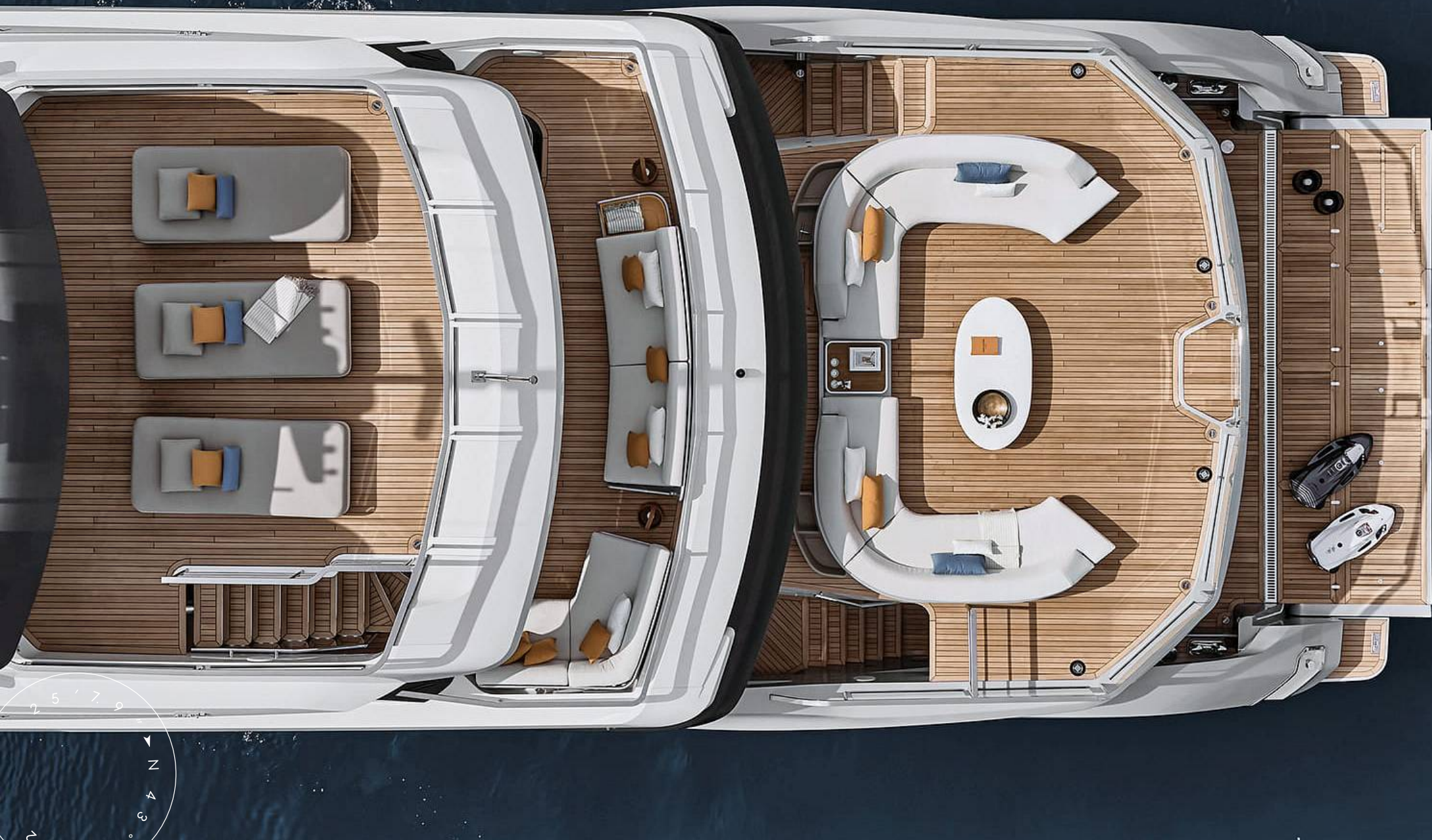
STERN

M/Y GRANDE TRIDECK



STERN

M/Y GRANDE TRIDECK



STERN

M/Y GRANDE TRIDECK



BOW AREA

M/Y GRANDE TRIDECK



SUNDECK LOUNGE AREA

M/Y GRANDE TRIDECK



SUNDECK LOUNGE AREA

M/Y GRANDE TRIDECK



SUNDECK DINING AREA

M/Y GRANDE TRIDECK



AFT UPPER DECK DINING AREA

M/Y GRANDE TRIDECK



AFT UPPER DECK DINING AREA

M/Y GRANDE TRIDECK



JACUZZI ON THE BOW

M/Y GRANDE TRIDECK



JACUZZI ON THE BOW

M/Y GRANDE TRIDECK



BOW LOUNGE AREA

M/Y GRANDE TRIDECK



AFT MAIN DECK DINING AREA

M/Y GRANDE TRIDECK



AFT MAIN DECK DINING AREA

M/Y GRANDE TRIDECK



AFT MAIN DECK DINING AREA

M/Y GRANDE TRIDECK



AFT MAIN DECK LOUNGE AREA

M/Y GRANDE TRIDECK



AFT MAIN DECK LOUNGE AREA

M/Y GRANDE TRIDECK



AFT MAIN DECK LOUNGE AREA

M/Y GRANDE TRIDECK



BEACH CLUB

M/Y GRANDE TRIDECK



BEACH CLUB

M/Y GRANDE TRIDECK



BEACH CLUB

M/Y GRANDE TRIDECK



MAIN SALON LOUNGE AREA

M/Y GRANDE TRIDECK



MAIN SALON LOUNGE AREA

M/Y GRANDE TRIDECK



MAIN SALON LOUNGE AREA

M/Y GRANDE TRIDECK



MAIN SALON LOUNGE AREA

M/Y GRANDE TRIDECK



MAIN SALON LOUNGE AREA

M/Y GRANDE TRIDECK

MAIN SALON LOUNGE AREA

M/Y GRANDE TRIDECK



MAIN SALON LOUNGE AREA

M/Y GRANDE TRIDECK



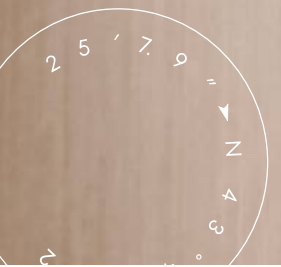
MASTER CABIN

M/Y GRANDE TRIDECK



MASTER CABIN

M/Y GRANDE TRIDECK



MASTER CABIN LOUNGE AREA

M/Y GRANDE TRIDECK



MASTER CABIN

M/Y GRANDE TRIDECK



MASTER CABIN

M/Y GRANDE TRIDECK



MASTER BATHROOM

M/Y GRANDE TRIDECK



GUEST CABIN

M/Y GRANDE TRIDECK



GUEST CABIN

M/Y GRANDE TRIDECK



VIP CABIN

M/Y GRANDE TRIDECK



VIP CABIN

M/Y GRANDE TRIDECK



VIP CABIN

M/Y GRANDE TRIDECK



VIP CABIN

M/Y GRANDE TRIDECK



UPPER DECK SALOON

M/Y GRANDE TRIDECK



UPPER DECK SALOON

M/Y GRANDE TRIDECK



UPPER DECK SALOON DINING AREA

M/Y GRANDE TRIDECK



UPPER DECK SALOON DINING AREA

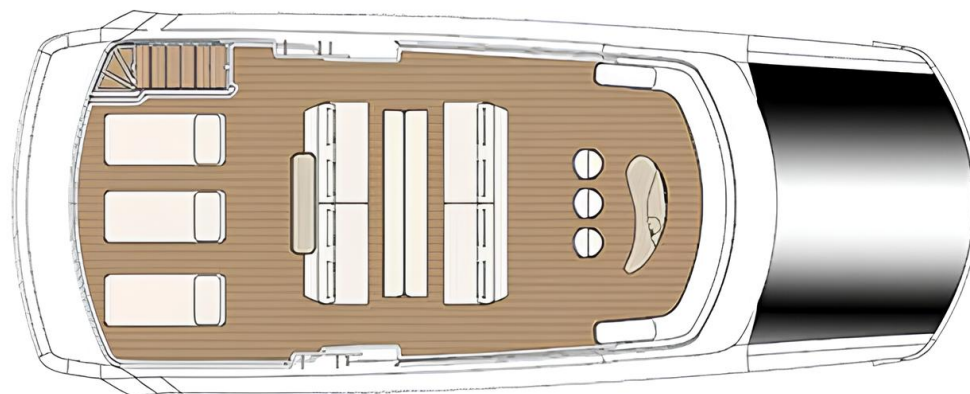
M/Y GRANDE TRIDECK



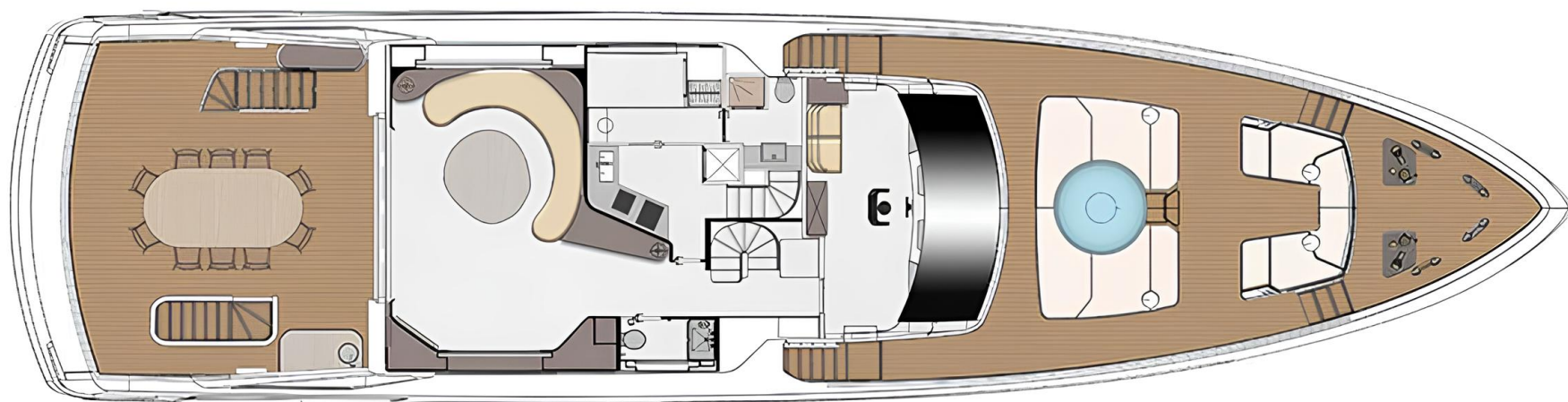
MAIN HELM STATION

M/Y GRANDE TRIDECK

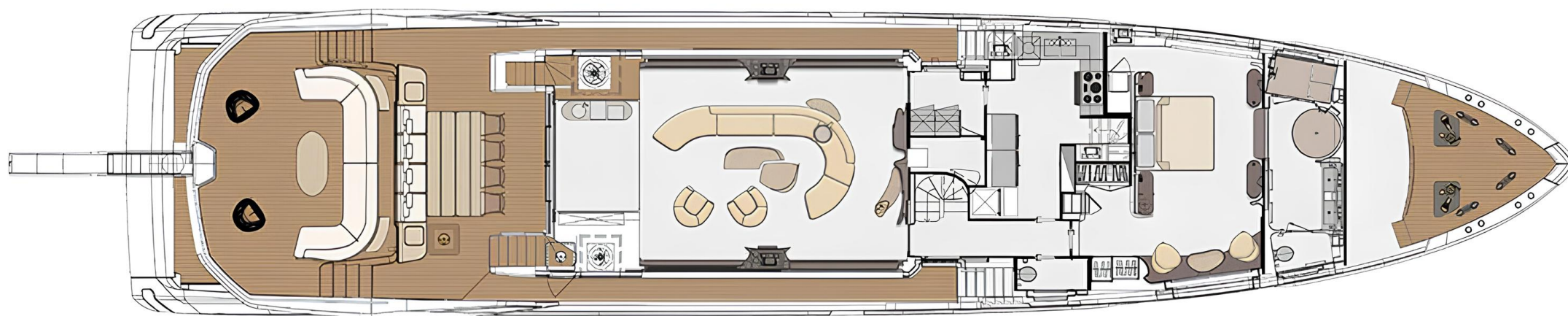
General Arrangement



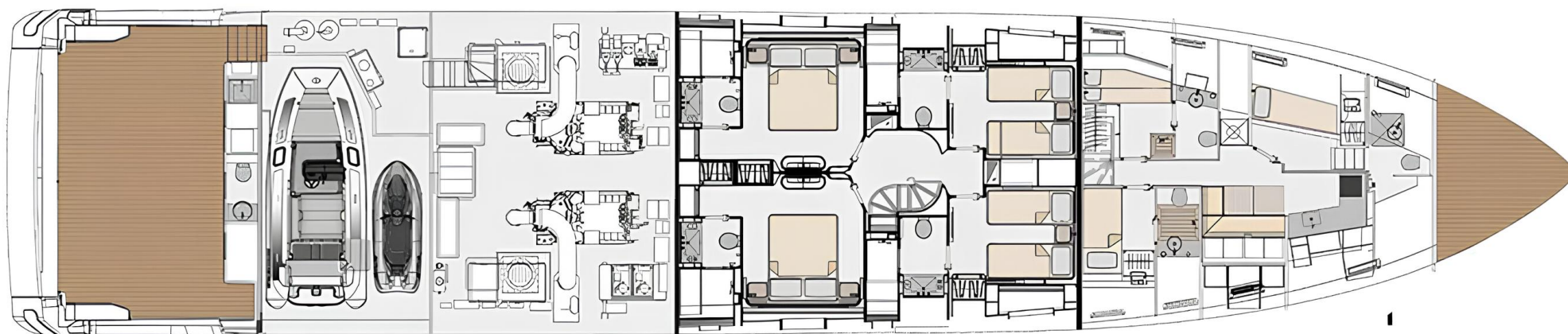
SUNDECK



UPPER DECK






MAIN DECK



LOWER DECK



KIRILL KUATOV

 +377 607 93 15 20 +39 333 576 44 44 [Send e-mail](#) WhatsApp Telegram

//

Be like no-one else

The Trideck sets the standard in beach club areas with its innovative mezzanine floor, ensuring the beach club is always ready without needing to clear tenders and jetskis, unlike other models. The yacht offers a six-cabin version or an option for a dedicated owner's office on the upper deck. Designed by Alberto Mancini, its exterior lines are sure to attract envious glances.

[More information about M/Y Grande Trideck at www.nauyachts.com](http://www.nauyachts.com)

[Watch video](#)