



Brokerage

NAU
YACHTS

HELGA

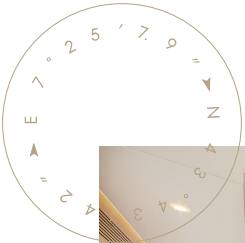
MOTOR YACHT VAN DER VALK 27.3M 2021

€4,950,000

FLAG - SAN MARINO

MOTOR YACHT

HELGA



HELGA is a 27.3-meter custom motor yacht built by **Van der Valk** for her current owner, presented in pristine condition. With only 721 engine hours, she is an excellent opportunity for prospective buyers.

The yacht's layout includes four guest cabins on the lower deck, accommodating eight guests, while the crew quarters are situated in the forward section of the main deck for enhanced privacy.

Designed by Guido de Groot, **HELGA** features an aluminum hull and superstructure, painted in RAL 5024, with teak decks. Built with enhanced thermal and sound insulation, she is finished with a durable Alexseal coating and equipped with a gyroscopic stabilizer for superior comfort at sea.

The yacht is equipped with a hydraulic swim platform with a 1,000 kg capacity, heated floors throughout all interior spaces, and infrared heating in the cockpit. A soundproof generator with minimal vibration ensures a quiet and comfortable experience on board.

Powered by twin MTU 12V 2000 M96L diesel engines producing 1,920 hp each, **HELGA** reaches a cruising speed of 23 knots and a maximum speed of 27 knots. With a draft of 1.8 meters, she can easily access most marinas, while her beam of 6.25 meters ensures spacious interiors.

[see more information about M/Y HELGA at www.nauyachts.com](http://www.nauyachts.com)

SPECIFICATION

SHIPYARD, MODEL	Van Der Valk 26M Pilot
BUILT	2021
LENGTH	27.3 m
WATERLINE LENGTH	20.68 m
HULL CONFIGURATION	PLANING
BEAM	6.25 m
RANGE	N/A
DRAFT	1.8 m
GROSS TONNAGE	129 GT
YACHT CLASS	MCA-MGN-280 VESSEL OP.CAT. 2
CABINS	4+2
MASTER CABIN	LOWER DECK
GUESTS	8
BERTHS	8+4
CREW	4
HEADS	5+1

EXTERIOR DESIGN	GUIDO DE GROOT DESIGN
INTERIOR DESIGN	GUIDO DE GROOT DESIGN
HULL	ALUMINUM
SUPERSTRUCTURE	ALUMINIUM
ENGINES	2 x MTU 12V 2000 M96L 1920 h.p.
TYPE OF DRIVE	SHAFT LINE
ENGINE HOURS	721 h
MAXIMUM SPEED	27 kn
CRUISING SPEED	23 kn
FUEL CONSUMPTION AT ECONOMICAL SPEED	N/A
FUEL	8500 l
GREY WATER	1000 l
BLACK WATER	1000 l
FRESH WATER	1900 l
DISPLACEMENT	73

[see more information about M/Y HELGA at www.nauyachts.com](http://www.nauyachts.com)



EXTERIOR VAN DER VALK 2021 MY HELGA

M/Y HELGA



EXTERIOR VAN DER VALK 2021 MY HELGA

M/Y HELGA



EXTERIOR VAN DER VALK 2021 MY HELGA

M/Y HELGA



MAIN SALON LOUNGE AREA

M/Y HELGA



MAIN SALON LOUNGE AREA

M/Y HELGA



GALLEY

M/Y HELGA



MASTER CABIN

M/Y HELGA



MASTER CABIN WORKSPACE

M/Y HELGA



MASTER CABIN LOUNGE AREA

M/Y HELGA



MASTER BATHROOM

M/Y HELGA



MASTER BATHROOM

M/Y HELGA



GUEST CABIN

M/Y HELGA



GUEST BATHROOM

M/Y HELGA



VIP CABIN

M/Y HELGA



VIP BATHROOM

M/Y HELGA



GUEST CABIN

M/Y HELGA



GUEST BATHROOM

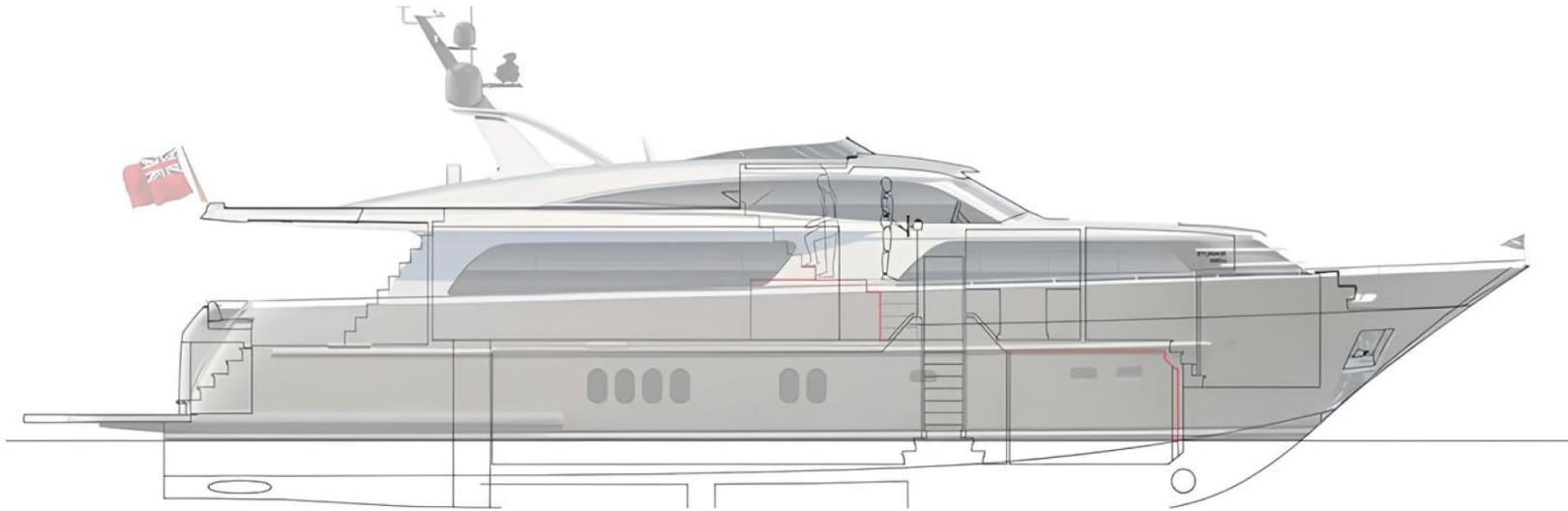
M/Y HELGA



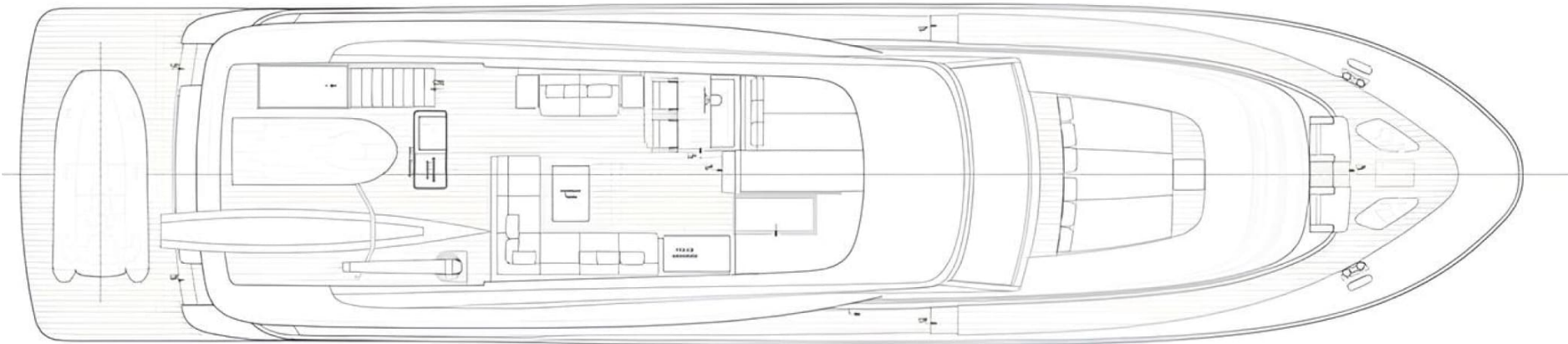
ENGINE ROOM

M/Y HELGA

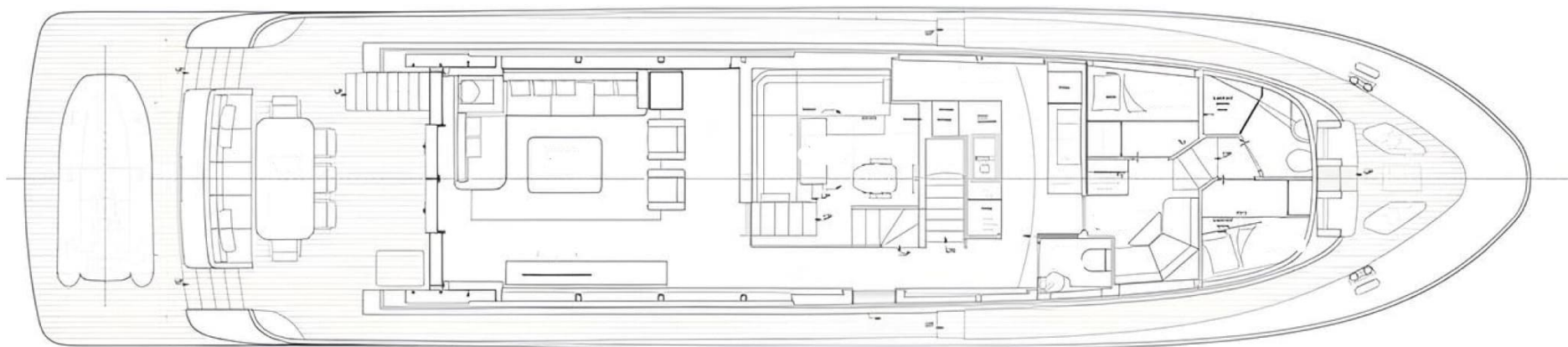
General Arrangement



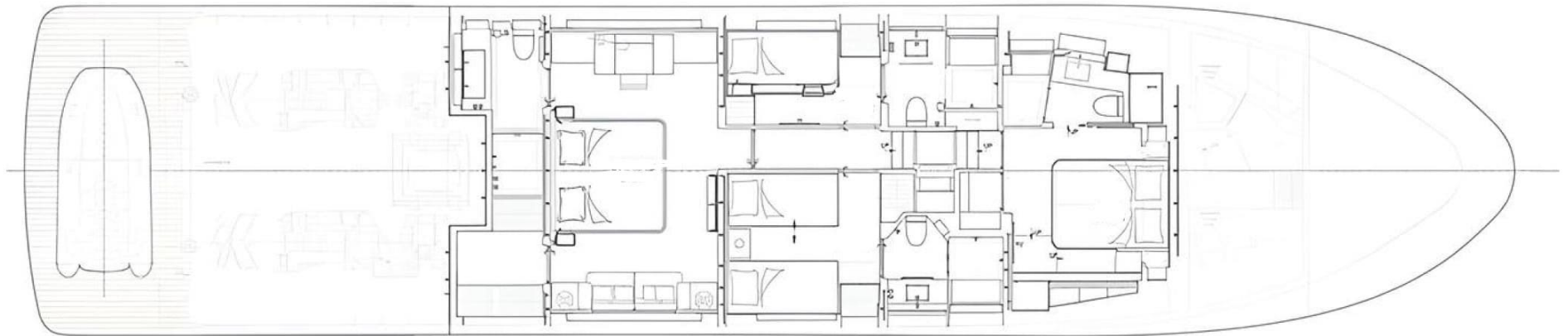
PROFILE



FLYBRIDGE



MAIN DECK



LOWER DECK



KIRILL KUATOV

+377 607 93 15 20

+39 333 576 44 44

 [Send e-mail](#)

 WhatsApp

 Telegram