



Brokerage

NAU
YACHTS

OLYMPUS

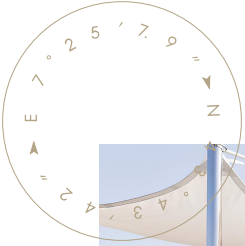
MOTOR YACHT LEADSHIP 55M 1996

€19,750,000

FLAG - CAYMAN ISLANDS

MOTOR YACHT

OLYMPUS



OLYMPUS is a 55-meter motor yacht with an internal volume of 881 GT, built by **C. Van Lent & Zonen (Feardship group)** in 1996 to a design by Andrew Winch and De Voogt Naval Architects. Between 2024 and 2025, she underwent a comprehensive refit at the **Royal Van Lent** shipyard in Amsterdam. This extensive project included technical upgrades, interior refurbishment, and enhancements to exterior guest areas, all carried out with respect for the yacht's original architecture and in line with the latest industry standards.

Accommodation is provided for up to 16 guests across eight staterooms, including two master suites - one located forward on the main deck and the second positioned on the upper deck. Four guest cabins are found on the lower deck, while two additional cabins are suitable for staff or support personnel. All decks are connected via an internal elevator. The sun deck features a jacuzzi, bar, and a touch-and-go helipad with a certified lifting capacity of 3,100 kg.

The refit included:

- Complete refurbishment of the guest interiors, with new furniture, textiles, flooring, and fixtures.
- Full renovation of the galley with new professional-grade appliances and optimized storage.
- Renewal of lacquered finishes, upholstery, and lighting across all decks.
- Modernization of the jacuzzi and installation of illuminated stainless-steel nameplates.
- Upgrade of the navigation console, bridge lighting, and electronics.
- Overhaul of HVAC, power management, alarm, and monitoring systems.
- Full servicing of three cranes, improvements to the anchor system, and a redesigned lazarette for crew functionality.

Powered by twin 2,600 hp Caterpillar diesel engines, **OLYMPUS** reaches a top speed of 17.5 knots and cruises at 12 knots with a transoceanic range of 4,000 nautical miles. At anchor, her stabilizers ensure exceptional comfort. She is fully compliant with Lloyd's Register and MCA standards, making her a viable candidate for private or commercial charter use.

see more information about M/Y OLYMPUS at www.nauyachts.com

SPECIFICATION

| | |
|--------------------|--------------|
| SHIPYARD, MODEL | Feadship 55M |
| BUILT | 1996 |
| LENGTH | 55 m |
| WATERLINE LENGTH | 49.4 m |
| HULL CONFIGURATION | DISPLACEMENT |
| BEAM | 10 m |
| RANGE | 4000 |
| DRAFT | 3.2 m |
| GROSS TONNAGE | 881 GT |
| YACHT CLASS | RINA |
| CABINS | 8+8 |
| MASTER CABIN | MAIN DECK |
| GUESTS | 16 |
| BERTHS | 16+16 |
| CREW | 16 |
| HEADS | 10+8 |

| | |
|--------------------------------------|-------------------------------------|
| EXTERIOR DESIGN | WINCH DESIGN |
| INTERIOR DESIGN | WINCH DESIGN |
| HULL | STEEL |
| SUPERSTRUCTURE | ALUMINIUM |
| ENGINES | 2 x Caterpillar 3516DI-TA 2600 h.p. |
| TYPE OF DRIVE | SHAFT LINE |
| ENGINE HOURS | 2302 h |
| MAXIMUM SPEED | 17.5 kn |
| CRUISING SPEED | 12 kn |
| FUEL CONSUMPTION AT ECONOMICAL SPEED | ~ 263 l/h |
| FUEL | 103100 l |
| GREY WATER | 4000 l |
| BLACK WATER | 2100 l |
| FRESH WATER | 38900 l |
| DISPLACEMENT | 715 |

[see more information about M/Y OLYMPUS at www.nauyachts.com](http://www.nauyachts.com)



EXTERIOR FEADSHIP 55M 1996 MY OLYMPUS

M/Y OLYMPUS



EXTERIOR FEADSHIP 55M 1996 MY OLYMPUS

M/Y OLYMPUS



EXTERIOR FEADSHIP 55M 1996 MY OLYMPUS

M/Y OLYMPUS



EXTERIOR FEADSHIP 55M 1996 MY OLYMPUS

M/Y OLYMPUS



SUNDECK

M/Y OLYMPUS



SUNDECK JACUZZI

M/Y OLYMPUS



SUNDECK JACUZZI

M/Y OLYMPUS



SUNDECK LOUNGE AREA

M/Y OLYMPUS



SUNDECK LOUNGE AREA

M/Y OLYMPUS



AFT MAIN DECK DINING AREA

M/Y OLYMPUS



MAIN SALON LOUNGE AREA

M/Y OLYMPUS



MAIN SALON LOUNGE AREA

M/Y OLYMPUS



MAIN SALON LOBBY

M/Y OLYMPUS



MASTER CABIN

M/Y OLYMPUS



MASTER CABIN LOUNGE AREA

M/Y OLYMPUS



MAKE-UP TABLE IN MASTER CABIN

M/Y OLYMPUS



OFFICE IN THE MASTER CABIN

M/Y OLYMPUS



MASTER BATHROOM

M/Y OLYMPUS



VIP CABIN

M/Y OLYMPUS



VIP CABIN

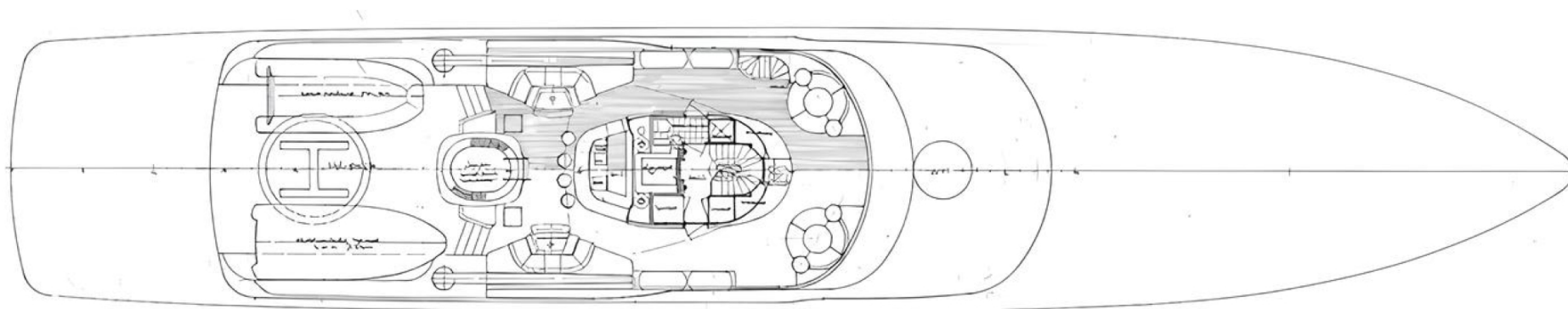
M/Y OLYMPUS



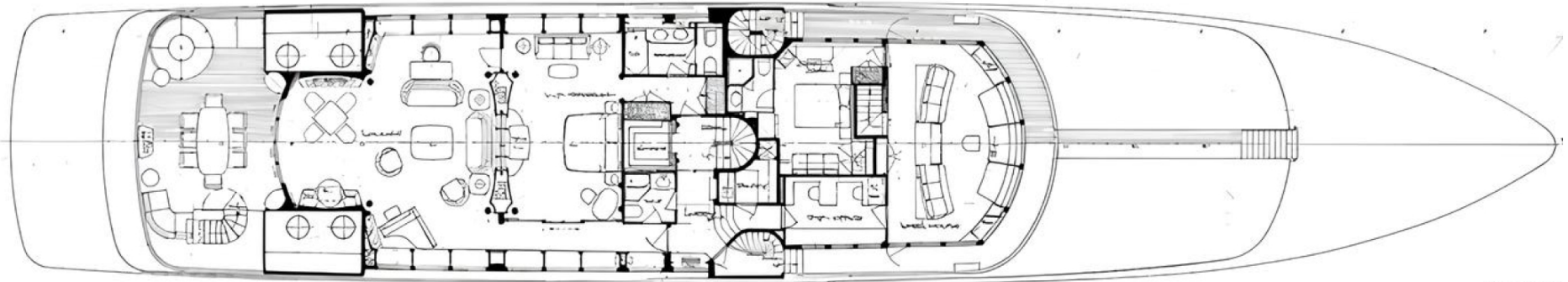
UPPER DECK SALOON

M/Y OLYMPUS

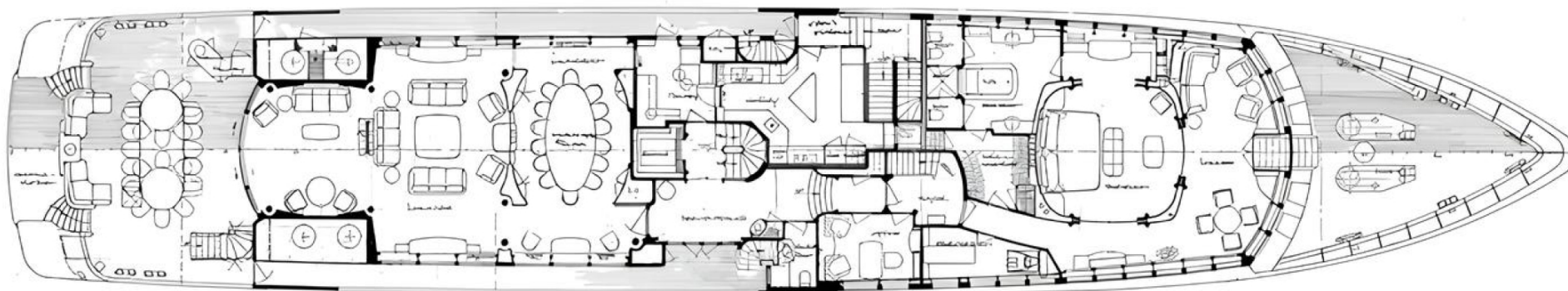
General Arrangement



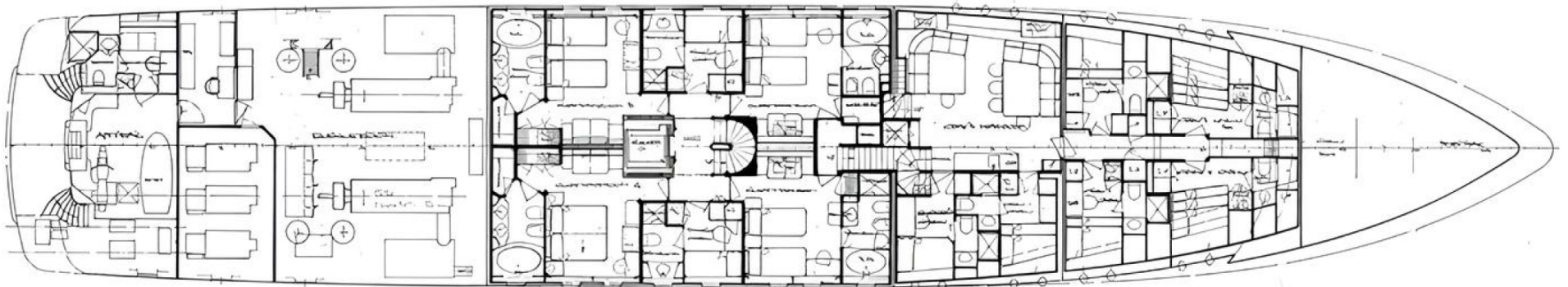
SUNDECK



UPPER DECK



MAIN DECK



LOWER DECK



KIRILL KUATOV

+377 607 93 15 20

+39 333 576 44 44

 [Send e-mail](#)

 WhatsApp

 Telegram

[More information about M/Y OLYMPUS at www.nauyachts.com](http://www.nauyachts.com)

[Watch video](#)