



Brokerage

NAU
YACHTS

NITA K II

MOTOR YACHT AMELS 52.02M 2004

€19,230,769
FLAG - JAMAICA

MOTOR YACHT

NITA K II



NITA K II is a 52-metre motor yacht with a distinguished Dutch pedigree, built by **Amels** in 2004 and fully refitted in 2024. Combining the strength of a steel hull with the lightness of an aluminium superstructure, she offers excellent stability, comfort, and long-range capability — ideal for global cruising.

Her interiors, styled by Alberto Pinto and Laura Sessa, are warm, refined, and detail-focused. Guest accommodation is arranged across five cabins, including a full-beam master suite on the main deck. The master includes a private lounge and study, two bathrooms, and walk-in wardrobes. On the lower deck are two VIP suites with whirlpool baths and two additional guest cabins.

The sundeck has been entirely reimagined during the 2024 refit, now featuring a new Jacuzzi, panoramic seating areas, and contemporary furnishings. Additional open-air lounges and al fresco dining areas are located on the bridge and main decks. A 24-foot Novurania tender is stored on the foredeck, preserving guest space aft.

Powered by twin 1,200 hp Cummins engines, **NITA K II** reaches a top speed of 15 knots and cruises comfortably at 12.5 knots, with a transoceanic range of up to 5,000 nautical miles. Her extensive refit included a Lloyd's 20-year survey, full repaint with ceramic coating, AV/IT upgrades, new watermakers, engine realignment, engineering improvements, and teak deck refurbishment.

With proven **Amels** build quality and robust technical upgrades, **NITA K II** is a compelling option for an owner seeking a reliable Northern European yacht — equally suited to family cruising or adventurous world voyages.

[see more information about M/Y NITA K II at www.nauyachts.com](http://www.nauyachts.com)

SPECIFICATION

SHIPYARD, MODEL	Amels Tigre D'Or 50
BUILT	2004
LENGTH	52.02 m
WATERLINE LENGTH	48.31 m
HULL CONFIGURATION	DISPLACEMENT
BEAM	9.14 m
RANGE	5000
DRAFT	3 m
GROSS TONNAGE	628 GT
YACHT CLASS	RINA
CABINS	5+7
MASTER CABIN	MAIN DECK
GUESTS	12
BERTHS	12+14
CREW	14
HEADS	7+6

EXTERIOR DESIGN	TERENCE DISDALE
INTERIOR DESIGN	ALBERTO PINTO AND LAURA SESSA
HULL	STEEL
SUPERSTRUCTURE	ALUMINIUM
ENGINES	2 x Cummins 1200 h.p.
TYPE OF DRIVE	SHAFT LINE
ENGINE HOURS	N/A
MAXIMUM SPEED	14 kn
CRUISING SPEED	12 kn
FUEL CONSUMPTION AT ECONOMICAL SPEED	~ 280 l/h
FUEL	118014 l
GREY WATER	N/A
BLACK WATER	N/A
FRESH WATER	17999 l
DISPLACEMENT	628

[see more information about M/Y NITA K II at www.nauyachts.com](http://www.nauyachts.com)



EXTERIOR AMELS TIGRE D'OR 50 2004 MY
NITA K II

M/Y NITA K II



EXTERIOR AMELS TIGRE D'OR 50 2004 MY
NITA K II

M/Y NITA K II



EXTERIOR AMELS TIGRE D'OR 50 2004 MY
NITA K II

M/Y NITA K II



SLIDE

M/Y NITA K II



BOW AREA

M/Y NITA K II



SUNDECK LOUNGE AREA

M/Y NITA K II



SUNDECK JACUZZI

M/Y NITA K II



AFT UPPER DECK LOUNGE AREA

M/Y NITA K II



AFT UPPER DECK DINING AREA

M/Y NITA K II



AFT MAIN DECK LOUNGE AREA

M/Y NITA K II



WATER TOYS

M/Y NITA K II



UPPER DECK SALOON

M/Y NITA K II



UPPER DECK SALOON

M/Y NITA K II



UPPER DECK SALON BAR

M/Y NITA K II



MAIN SALON LOUNGE AREA

M/Y NITA K II



MAIN SALON DINING AREA

M/Y NITA K II



MAIN SALON DINING AREA

M/Y NITA K II



MAIN HELM STATION

M/Y NITA K II



GALLEY

M/Y NITA K II



MASTER CABIN

M/Y NITA K II



MASTER CABIN

M/Y NITA K II



MASTER CABIN DRESSING ROOM

M/Y NITA K II



MASTER BATHROOM

M/Y NITA K II



VIP CABIN

M/Y NITA K II



VIP CABIN

M/Y NITA K II



VIP BATHROOM

M/Y NITA K II



VIP CABIN

M/Y NITA K II



VIP BATHROOM

M/Y NITA K II



VIP CABIN

M/Y NITA K II



GUEST CABIN

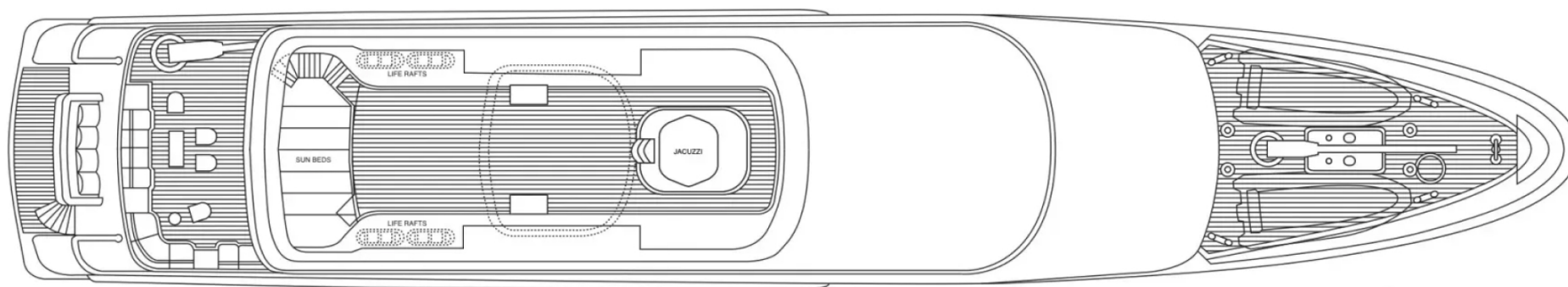
M/Y NITA K II



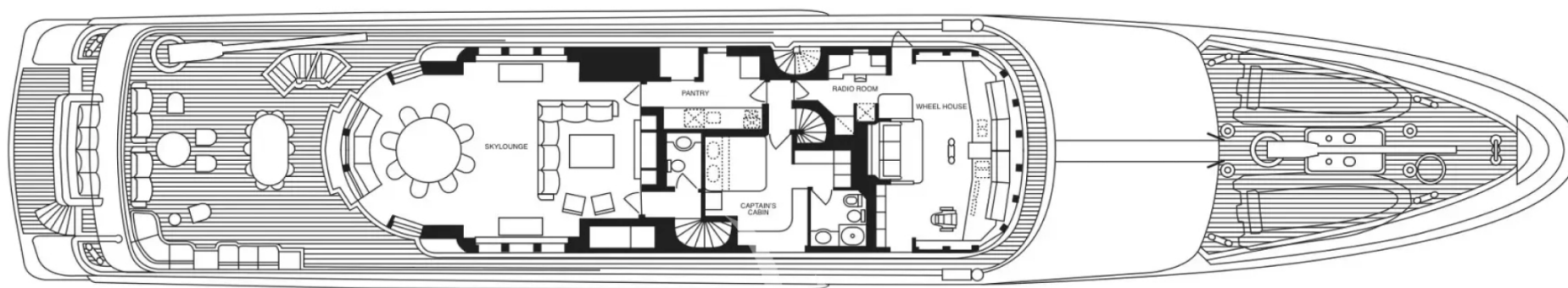
GUEST BATHROOM

M/Y NITA K II

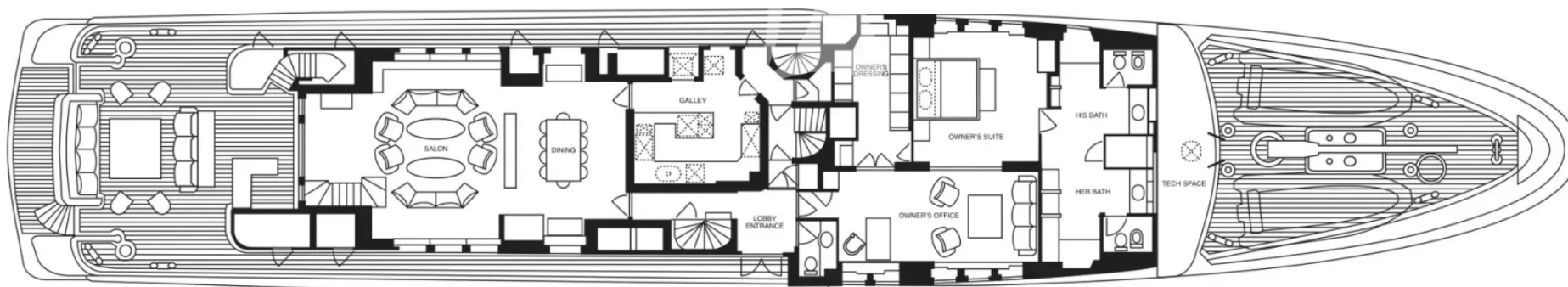
General Arrangement



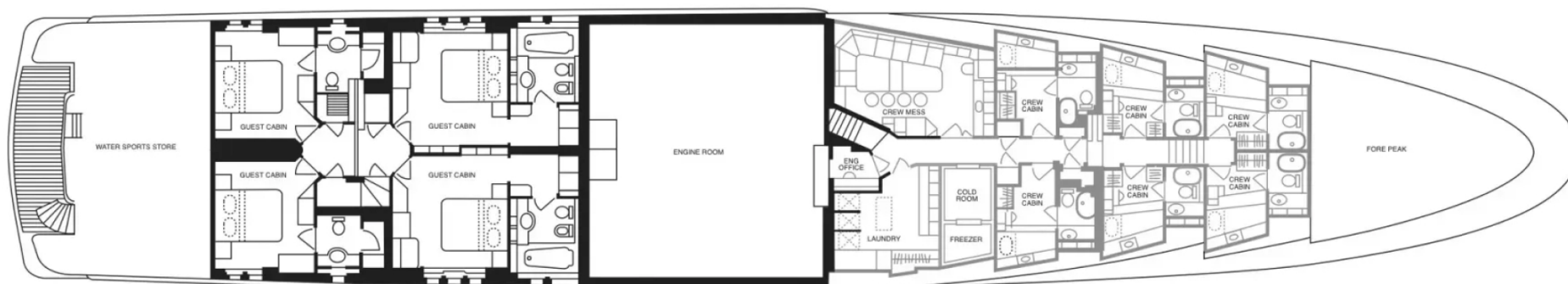
SUNDECK



UPPER DECK



MAIN DECK



LOWER DECK



KRISTINA KRAM

+377 678 63 33 13

Send e-mail

WhatsApp

Telegram

[More information about M/Y NITA K II at www.nauyachts.com](http://www.nauyachts.com)

[Watch video](#)