



New Build

NAU  
YACHTS

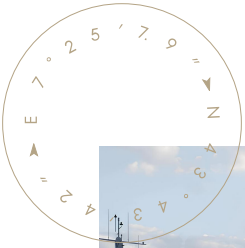
SUY-135

MOTOR YACHT    ANTONINI NAVI 44M    2027

FLAG -

MOTOR YACHT

## SUY-135



The **SUY-135** is a motor yacht that seamlessly blends the classic elegance of a luxury vessel with the capabilities of an expedition yacht. Designed for transporting tenders, vehicles, and water toys, the **SUY-135** stands out in its class. Five elegantly appointed staterooms accommodate up to 10 guests, while crew quarters for eight ensure seamless service and a superior onboard experience.

At the heart of its design is a raised main deck, beneath which lies a full-beam garage that significantly expands storage capacity. This innovative layout maximizes efficiency while maintaining a sleek and stylish profile. The transverse tender garage accommodates a 7-meter RIB, leaving room for additional water toys, ensuring seamless access to the sea while keeping exterior decks open for relaxation.

Measuring 44 meters in length with a maximum beam of 9.8 meters, the **SUY-135** features a robust steel hull and an aluminum superstructure, ensuring durability, longevity, and optimal performance. Powered by twin MAN engines producing 1,400 hp each, the yacht reaches a top speed of 15 knots and boasts an impressive range of 4,000 nautical miles at 10 knots, making it ideal for long-range cruising. Equipped with twin 86 kW generators and a fin stabilization system, the **SUY-135** guarantees smooth and comfortable voyages in any sea conditions.

[see more information about M/Y SUY-135 at www.nauyachts.com](http://www.nauyachts.com)

# SPECIFICATION

SHIPYARD, MODEL	Antonini Navi SUY-135
DELIVERY AT THE SHIPYARD	2027
LENGTH	44 m
WATERLINE LENGTH	N/A
HULL CONFIGURATION	DISPLACEMENT
BEAM	9.8 m
RANGE	4000
DRAFT	2.2 m
GROSS TONNAGE	462 GT
YACHT CLASS	N/A
CABINS	5+5
MASTER CABIN	MAIN DECK
GUESTS	10
BERTHS	10+8
CREW	8
HEADS	7+4

EXTERIOR DESIGN	FULVIO DE SIMONI
INTERIOR DESIGN	FULVIO DE SIMONI
HULL	STEEL
SUPERSTRUCTURE	ALUMINIUM
ENGINES	2 x MAN 1400 h.p.
TYPE OF DRIVE	SHAFT LINE
ENGINE HOURS	N/A
MAXIMUM SPEED	15 kn
CRUSING SPEED	12 kn
FUEL CONSUMPTION AT ECONOMICAL SPEED	N/A
FUEL	48000 l
GREY WATER	2500 l
BLACK WATER	2500 l
FRESH WATER	9000 l
DISPLACEMENT	N/A

[see more information about M/Y SUY-135 at www.nauyachts.com](http://www.nauyachts.com)





EXTERIOR ANTONINI NAVI SUI-135

M/Y SUI-135





EXTERIOR ANTONINI NAVI SUI-135

M/Y SUI-135





EXTERIOR ANTONINI NAVI SUY-135

M/Y SUY-135





EXTERIOR ANTONINI NAVI SUY-135

M/Y SUY-135





COCKPIT SEATING AREA

M/Y SUY-135

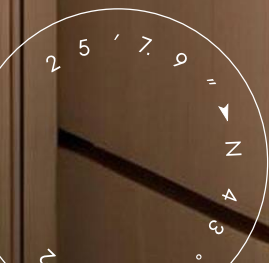




BOW LOUNGE AREA

M/Y SUY-135





MAIN SALON

M/Y SUY-135





MASTER CABIN

M/Y SUY-135





MASTER CABIN

M/Y SUY-135





MASTER BATHROOM

M/Y SUY-135

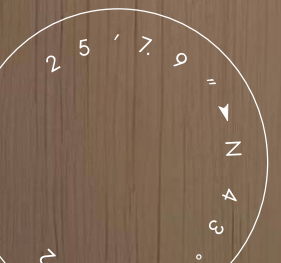




GUEST CABIN

M/Y SUY-135







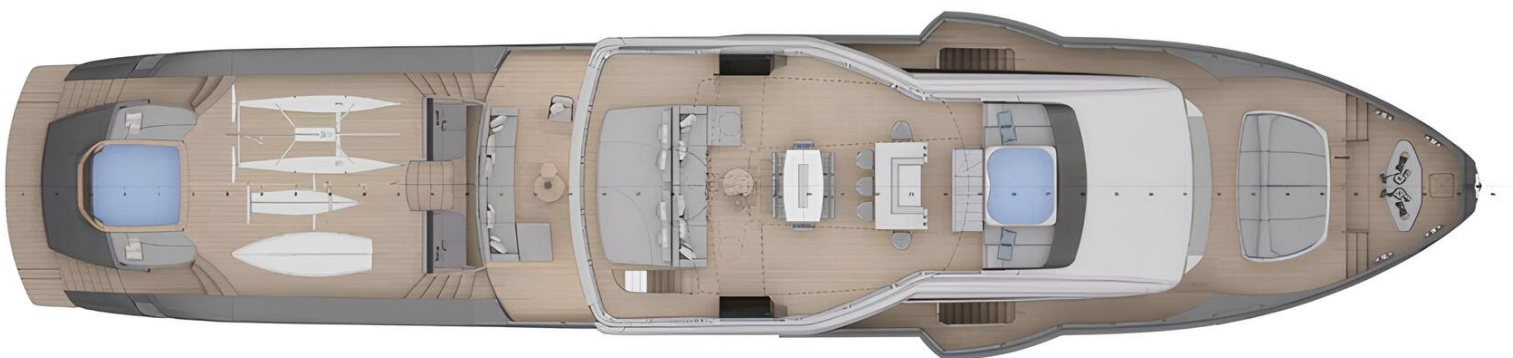
# General Arrangement





PROFILE





SUNDECK



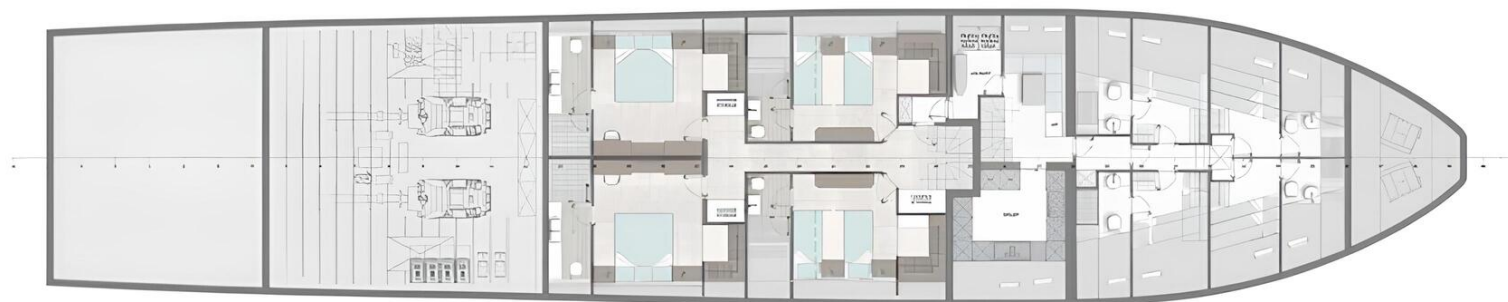


UPPER DECK



MAIN DECK





LOWER DECK



## KIRILL KUATOV

+377 607 93 15 20

+39 333 576 44 44

 [Send e-mail](#)

 WhatsApp

 Telegram