



New Build

NAU
YACHTS

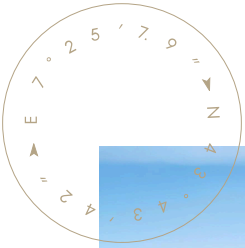
XPD-88

MOTOR YACHT ANTONINI NAVI 28.4M 2027

FLAG -

MOTOR YACHT

XPD-88



The **XPD 88** is a 24-meter yacht with a distinct personality, offering spacious living areas that rival much larger yachts, with a strong focus on comfort and practicality for life aboard. The **XPD** series represents a modern reimagining of expedition yachts, designed with elegance and one clear goal in mind: to travel. The design of the **XPD 88** was created by Mauro Sculli, a naval architect known for his innovative approach to yacht design. His passion for the sea and design, combined with the professionalism of the shipyard, resulted in a yacht where adventure harmoniously blends with style.

A standout feature of the **XPD 88** is the owner's cabin, which spans over 35 m² and includes a private terrace with direct access to the helm, offering an unparalleled connection with the sea. Below deck, the yacht accommodates up to 6 guests in 3 spacious cabins, while the crew quarters provide accommodation for 4 crew members in 2 cabins.

The **XPD 88** seamlessly combines luxury and functionality, offering unforgettable experiences for those who truly appreciate the sea. Central to the **XPD** philosophy is the experience of slow cruising, allowing guests to fully immerse themselves in the beauty of the ocean. The yacht can be equipped with a traditional engine or a more environmentally friendly hybrid propulsion system. Designed for long-distance voyages, the **XPD 88** has a maximum speed of 12 knots and a cruising range of 6,000 nautical miles at a cruising speed of 8.5 knots. The steel hull and superstructure ensure the yacht's durability and reliability.

[see more information about M/Y XPD-88 at www.nauyachts.com](http://www.nauyachts.com)

SPECIFICATION

SHIPYARD, MODEL	Antonini Navi XPD-88
DELIVERY AT THE SHIPYARD	2027
LENGTH	28.4 m
WATERLINE LENGTH	26.65 m
HULL CONFIGURATION	DISPLACEMENT
BEAM	9 m
RANGE	6000
DRAFT	2.25 m
GROSS TONNAGE	299 GT
YACHT CLASS	N/A
CABINS	4+2
MASTER CABIN	UPPER DECK
GUESTS	8
BERTHS	8+4
CREW	4
HEADS	5+1

EXTERIOR DESIGN	STUDIO SCULLI
INTERIOR DESIGN	STUDIO SCULLI
HULL	STEEL
SUPERSTRUCTURE	ALUMINIUM
ENGINES	2 x CAT C18 715 h.p.
TYPE OF DRIVE	SHAFT LINE
ENGINE HOURS	N/A
MAXIMUM SPEED	12 kn
CRUISING SPEED	8.5 kn
FUEL CONSUMPTION AT ECONOMICAL SPEED	N/A
FUEL	32000 l
GREY WATER	2200 l
BLACK WATER	5800 l
FRESH WATER	9300 l
DISPLACEMENT	N/A

[see more information about M/Y XPD-88 at www.nauyachts.com](http://www.nauyachts.com)



EXTERIOR ANTONINI NAVI XPD-88

M/Y XPD-88



EXTERIOR ANTONINI NAVI XPD-88

M/Y XPD-88



EXTERIOR ANTONINI NAVI XPD-88

M/Y XPD-88



EXTERIOR ANTONINI NAVI XPD-88

M/Y XPD-88



EXTERIOR ANTONINI NAVI XPD-88

M/Y XPD-88



COCKPIT

M/Y XPD-88



COCKPIT

M/Y XPD-88



AFT MAIN DECK LOUNGE AREA

M/Y XPD-88



BOW LOUNGE AREA

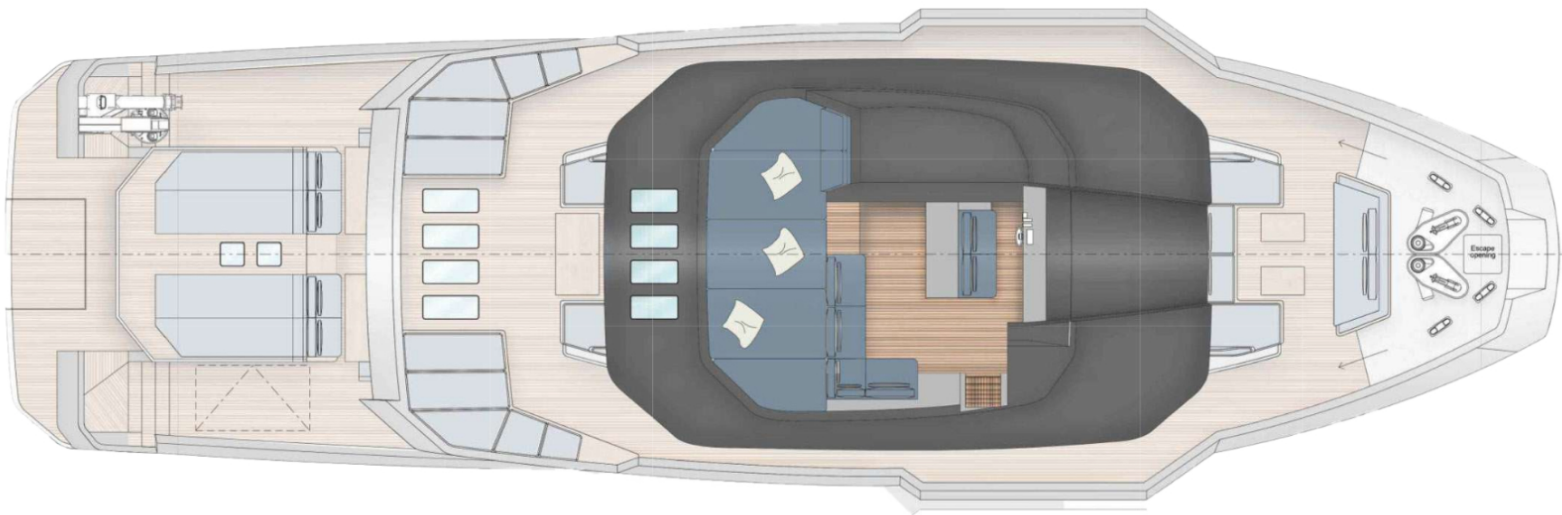
M/Y XPD-88



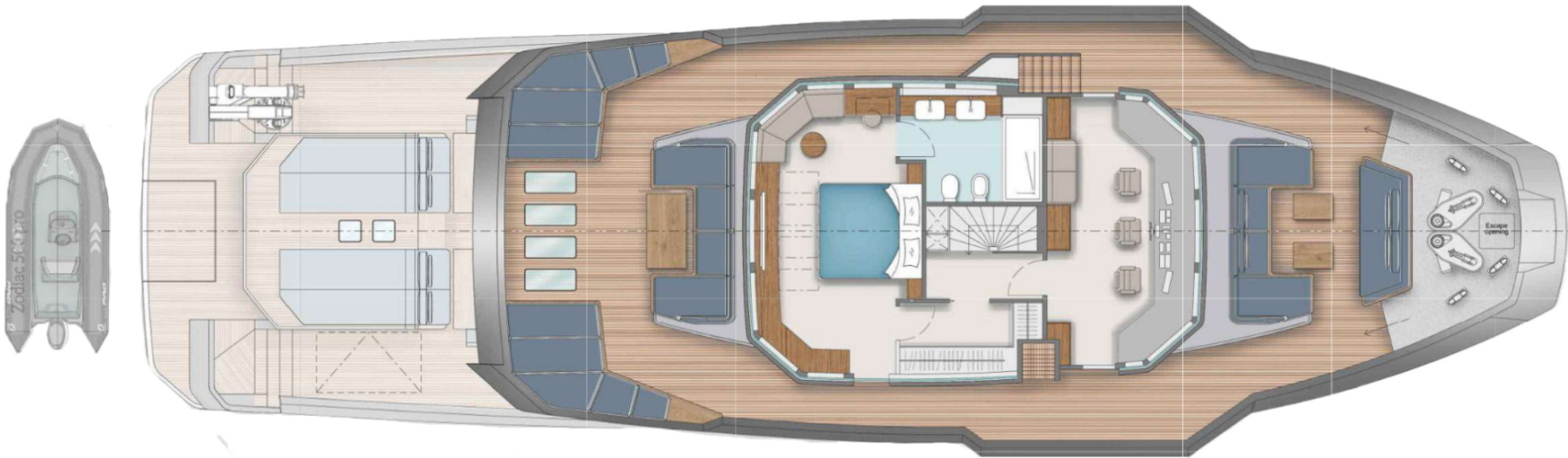
MASTER CABIN

M/Y XPD-88

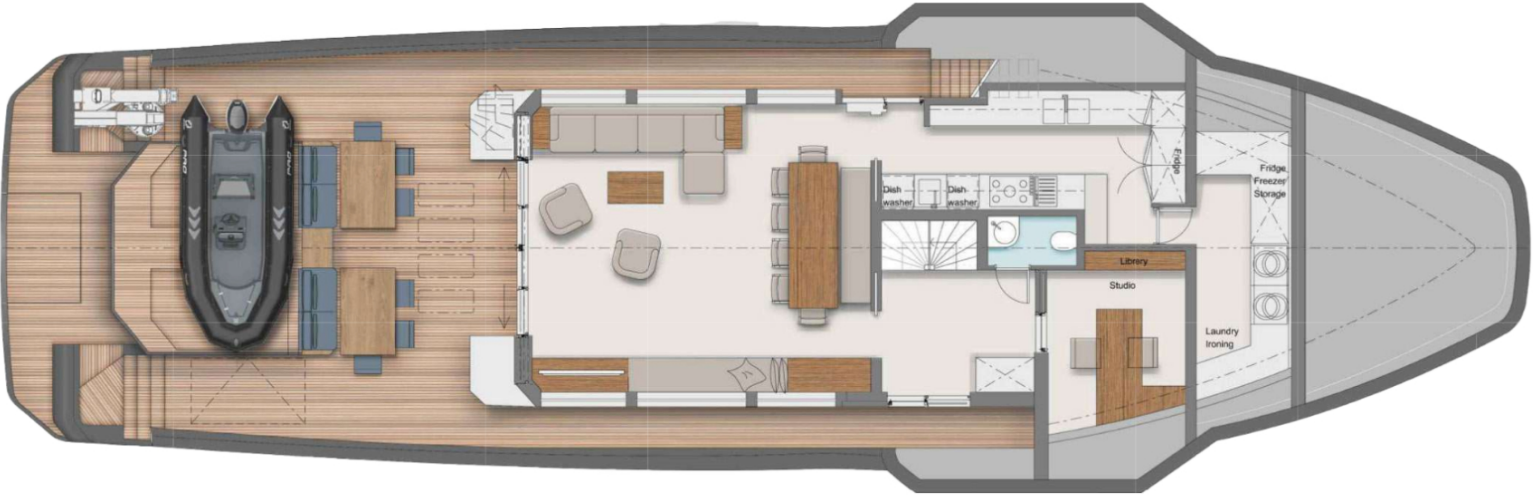
General Arrangement



SUNDECK



UPPER DECK



MAIN DECK



LOWER DECK



KIRILL KUATOV

+377 607 93 15 20

+39 333 576 44 44

 [Send e-mail](#)

 WhatsApp

 Telegram