



New Build

NAU
YACHTS

ANVERA 58S (58#08)

MOTOR YACHT ANVERA 17.5M 2025

FLAG -

MOTOR YACHT

ANVERA 58S (58#08)



The **Anvera 58S (58#08)** is a brand-new yacht, fully equipped and ready for immediate delivery in Rimini, Italy. Built in 2025, this sleek and modern vessel features a striking grey-and-white exterior that exudes sophistication. Inside, it offers a well-appointed layout with two cabins and one bathroom, designed for both comfort and practicality.

Powered by twin MAN 850 HP engines, the **Anvera 58S** delivers exceptional performance on the water. Its innovative lightweight construction, advanced materials, and high-end finishes create a seamless fusion of luxury and efficiency. The main deck is designed for relaxation and socializing, featuring a spacious aft sunbed, an open-air shower, and a dining area with two sofas and a large table. At the bow, a sunbathing area provides additional space to unwind, while the hydraulic swim ladder and fold-down terraces enhance the overall experience on board. Carbon fiber elements, including the flagpole, handrails, and shower column, add to the yacht's modern aesthetic.

The yacht is equipped with state-of-the-art navigation and control systems to ensure ease of handling and precision maneuvering. Bow and stern thrusters, joystick control, two 16-inch LCD plotters, autopilot, GPS, VHF radio, and bow and stern cameras make navigation effortless.

The interior is crafted for comfort and functionality. The owner's cabin features a comfortable bed, a leather sofa, wardrobe storage, LED lighting, and air conditioning. The second cabin offers twin beds on either side, additional storage, and independent lighting controls. The bathroom is elegantly designed with a sink, shower, mirrored cabinet, and towel rack.

With a fuel capacity of 1,600 liters, a freshwater capacity of 400 liters, and a black water tank of 40 liters, the **Anvera 58S** is well-equipped for extended cruising. A 5 kW generator with a dedicated charger ensures reliable onboard power, while the soundproofed engine room enhances comfort.

Entertainment and onboard amenities include a Fusion stereo system with upgraded speakers and a fully equipped galley featuring a refrigerator, induction cooktop, and ice maker. The **Anvera 58S** represents the perfect balance of high performance, innovative design, and superior comfort, making it an exceptional choice for yacht enthusiasts.

[see more information about M/Y Anvera 58S \(58#08\) at www.nauyachts.com](http://www.nauyachts.com)

SPECIFICATION

SHIPYARD, MODEL	Anvera 58
BUILT	2025
LENGTH	17.5 m
WATERLINE LENGTH	N/A
HULL CONFIGURATION	PLANING
BEAM	5.12 m
RANGE	333
DRAFT	1.1 m
GROSS TONNAGE	N/A
YACHT CLASS	CE
CABINS	2
MASTER CABIN	LOWER DECK
GUESTS	16
BERTHS	4
CREW	N/A
HEADS	1

EXTERIOR DESIGN	ANVERA
INTERIOR DESIGN	ANVERA
HULL	CARBON FIBRE
SUPERSTRUCTURE	CARBON FIBRE
ENGINES	2 x MAN 850 h.p.
TYPE OF DRIVE	SHAFT LINE
ENGINE HOURS	N/A
MAXIMUM SPEED	53 kn
CRUSING SPEED	40 kn
FUEL CONSUMPTION AT ECONOMICAL SPEED	~ 120 l/h
FUEL	1600 l
GREY WATER	40 l
BLACK WATER	40 l
FRESH WATER	400 l
DISPLACEMENT	17

[see more information about M/Y Anvera 58S \(58#08\) at www.nauyachts.com](http://www.nauyachts.com)



EXTERIOR ANVERA 58 2025

M/Y ANVERA 58S (58#08)



EXTERIOR ANVERA 58 2025

M/Y ANVERA 58S (58#08)



EXTERIOR ANVERA 58 2025

M/Y ANVERA 58S (58#08)



EXTERIOR ANVERA 58 2025

M/Y ANVERA 58S (58#08)



EXTERIOR ANVERA 58 2025

M/Y ANVERA 58S (58#08)



EXTERIOR ANVERA 58 2025

M/Y ANVERA 58S (58#08)



COCKPIT SEATING AREA

M/Y ANVERA 58S (58#08)



COCKPIT SEATING AREA

M/Y ANVERA 58S (58#08)



HELM STATION

M/Y ANVERA 58S (58#08)



HELM STATION

M/Y ANVERA 58S (58#08)



COCKPIT GALLEY

M/Y ANVERA 58S (58#08)



BOW SUNBATHING AREA

M/Y ANVERA 58S (58#08)



MASTER CABIN

M/Y ANVERA 58S (58#08)



a 06 white
 bon look
 i Breeze Oak 10.69
 suto Tonga 10803-993
 s 1404 Neve
 rofiber white col.200
 or

All pictures shown are for illustration purposes only.
 Product may be subject to change.
 The manufacturer reserves the right to change the product without notice.

MASTER CABIN

M/Y ANVERA 58S (58#08)



ga 06 white
arbon look
i Breeze Oak 10.69
suto Tonga 10803-993
s 1404 Neve
rofiber white col.200
ror

*All pictures shown are for illustration purposes only.
Product may be subject to changes.
*Le immagini presenti sono solo a scopo illustrativo.
Il prodotto reale può essere soggetto a variazioni.

MASTER CABIN

M/Y ANVERA 58S (58#08)



MASTER BATHROOM

M/Y ANVERA 58S (58#08)



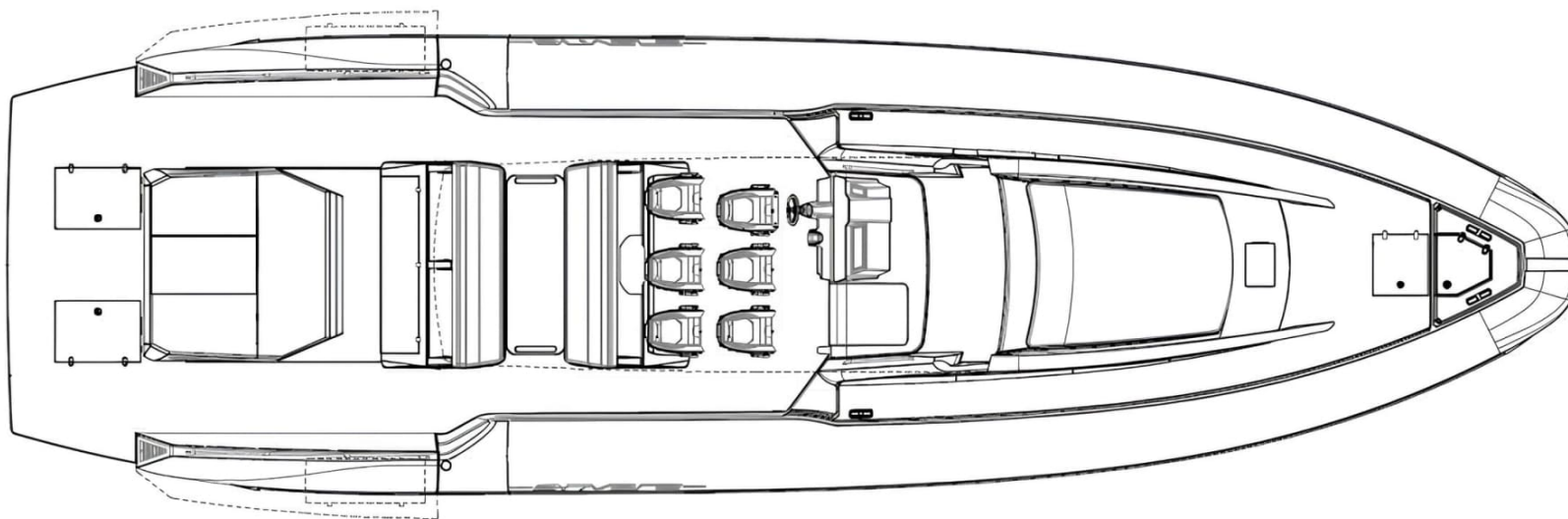
Tonga 06 white
Carbon look
Breeze Oak 10.69
Tonga 10803-993
Black paint
1404 Neve
Microfiber white col.200
Error

Tonga 06 white
Carbon look
Breeze Oak 10.69
Tonga 10803-993
Black paint
1404 Neve
Microfiber white col.200
Error

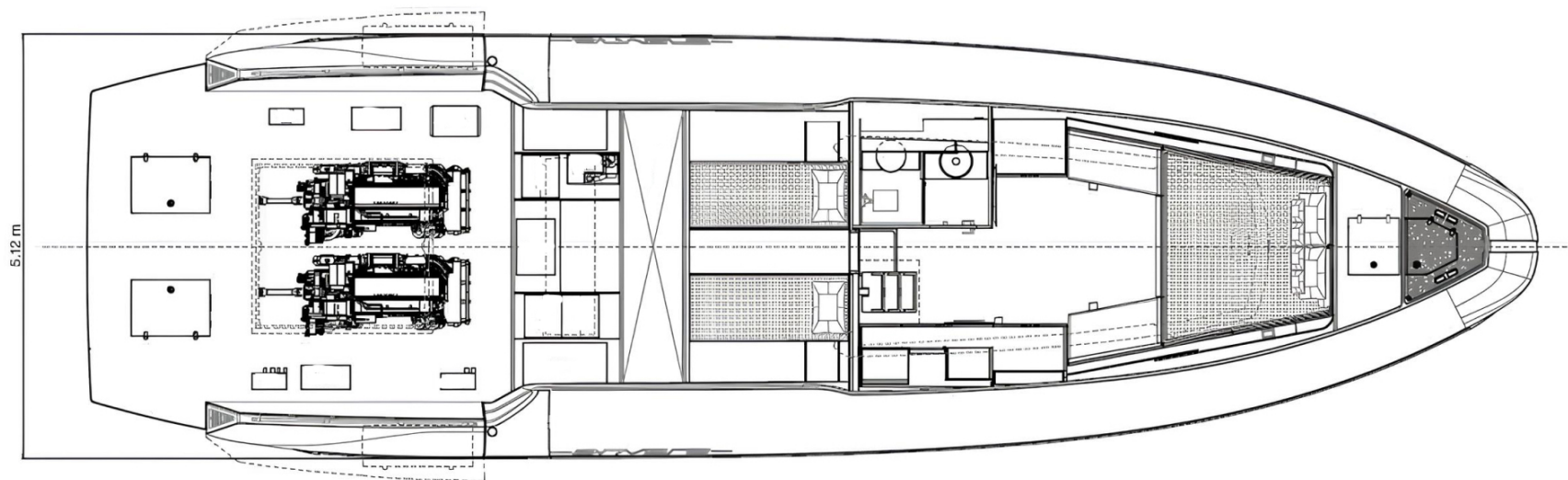
GUEST CABIN

M/Y ANVERA 58S (58#08)

General Arrangement



MAIN DECK



LOWER DECK



KIRILL KUATOV

+377 607 93 15 20

+39 333 576 44 44

 [Send e-mail](#)

 WhatsApp

 Telegram

[More information about M/Y Anvera 58S \(58#08\) at www.nauyachts.com](#)

[Watch video](#)