



New Build

NAU
YACHTS

B.YOND 37M

MOTOR YACHT BENETTI 36.92M 2027

FLAG -

MOTOR YACHT

B.YOND 37M

The expedition yacht **B.Yond 37M**, constructed from steel and aluminum with a capacity of 420GT, exemplifies the perfect blend of stylish design and exceptional technical performance. Designed by **Benetti's Interior Style Department** for the interiors and **Stefano Righini** for the yacht's unique exterior, the **B.Yond 37M** stands out in its class.

Recognizing privacy as a crucial element of a comfortable life on board, the creators of the **B.Yond 37M** have introduced a revolutionary deck layout that completely separates guest and crew areas. Crew accommodations and service zones are located on the lower deck, while guest cabins are situated on the main deck.

The master suite at the bow of the main deck and two VIP cabins can be enhanced with optional fold-out balconies. Another option for owners is to move their suite to the upper deck, transforming it into a penthouse with near-panoramic views. There are also numerous layout versions for additional cabins, an aft beach club, a sunbathing area with a pool on the foredeck, a gym, storage areas, and other amenities.

The use of a hybrid power system, developed by Siemens for **Benetti**, reduces the yacht's energy consumption and environmental impact. This technology offers four operational modes, including fully electric cruising and anchoring. The batteries provide up to 8 hours of autonomous operation during the day and up to 12 hours at night, with a recharge time of just 3 hours.

The yacht can accommodate 10 to 12 guests in 5 to 6 cabins and 7 to 8 crew members in 4 to 5 cabins. The **B.Yond 37M** offers an unparalleled combination of luxury, privacy, and advanced technology, making it an exceptional choice for discerning yachting enthusiasts.

[see more information about M/Y B.Yond 37M at www.nauyachts.com](http://www.nauyachts.com)

SPECIFICATION

SHIPYARD, MODEL	Benetti B.Yond 37M
DELIVERY AT THE SHIPYARD	2027
LENGTH	36.92 m
WATERLINE LENGTH	23.9 m
HULL CONFIGURATION	DISPLACEMENT
BEAM	8.6 m
RANGE	5000
DRAFT	2.61 m
GROSS TONNAGE	420 GT
YACHT CLASS	RINA
CABINS	6+4
MASTER CABIN	MAIN DECK
GUESTS	12
BERTHS	12+7
CREW	8
HEADS	8+5

EXTERIOR DESIGN	STEFANO RIGHINI
INTERIOR DESIGN	BENETTI INTERIOR STYLE DEPARTMENT
HULL	STEEL
SUPERSTRUCTURE	ALUMINIUM
ENGINES	2 x MAN 12V 1400 h.p.
TYPE OF DRIVE	SHAFT LINE
ENGINE HOURS	N/A
MAXIMUM SPEED	14 kn
CRUISING SPEED	10 kn
FUEL CONSUMPTION AT ECONOMICAL SPEED	~ 540 l/h
FUEL	66000 l
GREY WATER	N/A
BLACK WATER	N/A
FRESH WATER	6000 l
DISPLACEMENT	400

[see more information about M/Y B.Yond 37M at www.nauyachts.com](http://www.nauyachts.com)



EXTERIOR BENETTI B.YOND 37M NEW

M/Y B.YOND 37M



EXTERIOR BENETTI B.YOND 37M NEW

M/Y B.YOND 37M



EXTERIOR BENETTI B.YOND 37M NEW

M/Y B.YOND 37M



EXTERIOR BENETTI B.YOND 37M NEW

M/Y B.YOND 37M



BOW LOUNGE AREA

M/Y B.YOND 37M



SUNDECK

M/Y B.YOND 37M



SUNDECK

M/Y B.YOND 37M



SUNDECK LOUNGE AREA

M/Y B.YOND 37M



UPPER DECK LOUNGE AREA

M/Y B.YOND 37M



AFT MAIN DECK LOUNGE AREA

M/Y B.YOND 37M



MAIN DECK LOUNGE AREA

M/Y B.YOND 37M



BEACH CLUB

M/Y B.YOND 37M



STERN

M/Y B.YOND 37M



UPPER DECK SALON LOUNGE AREA

M/Y B.YOND 37M



UPPER DECK SALON LOUNGE AREA

M/Y B.YOND 37M



STAIRS FROM MD TO UD

M/Y B.YOND 37M



MAIN SALOON

M/Y B.YOND 37M



MAIN SALON DINING AREA

M/Y B.YOND 37M



MAIN SALON LOUNGE AREA

M/Y B.YOND 37M



MASTER CABIN

M/Y B.YOND 37M



MASTER CABIN

M/Y B.YOND 37M



MASTER CABIN WORKSPACE

M/Y B.YOND 37M



MASTER CABIN LOUNGE AREA

M/Y B.YOND 37M



MASTER BATHROOM

M/Y B.YOND 37M



MASTER BATHROOM

M/Y B.YOND 37M



VIP CABIN

M/Y B.YOND 37M



GUEST CABIN

M/Y B.YOND 37M



GUEST BATHROOM

M/Y B.YOND 37M



GUEST BATHROOM

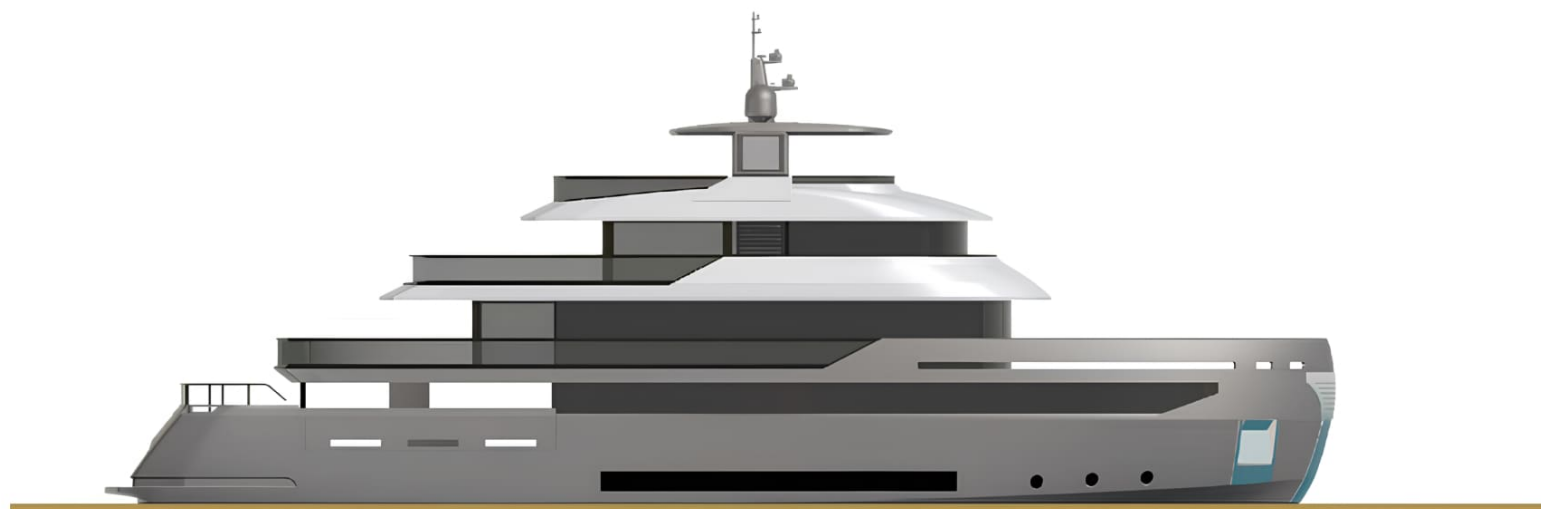
M/Y B.YOND 37M



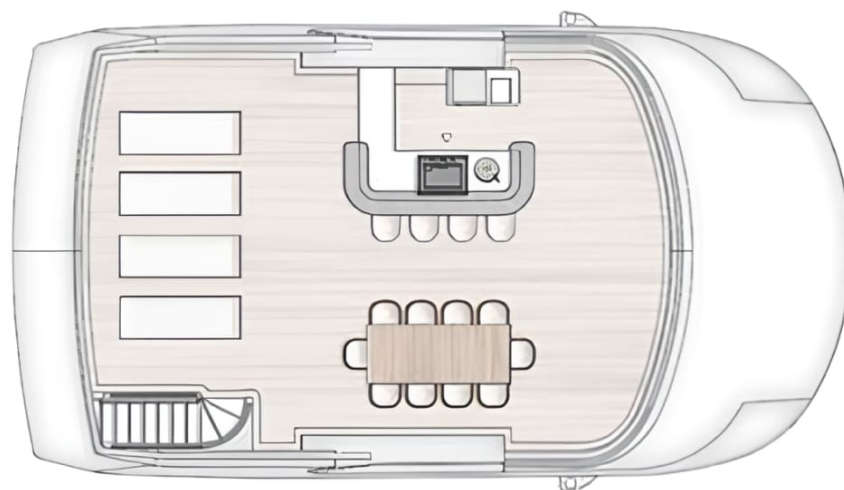
GYM ON THE LOWER DECK

M/Y B.YOND 37M

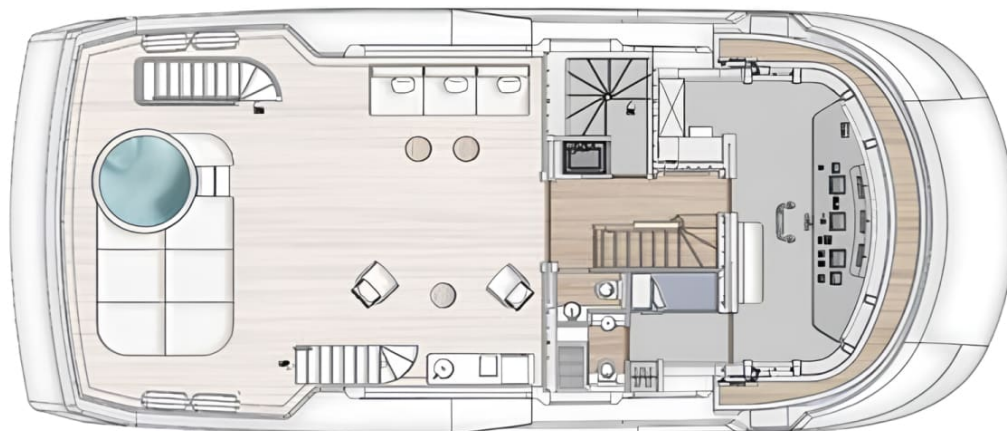
General Arrangement



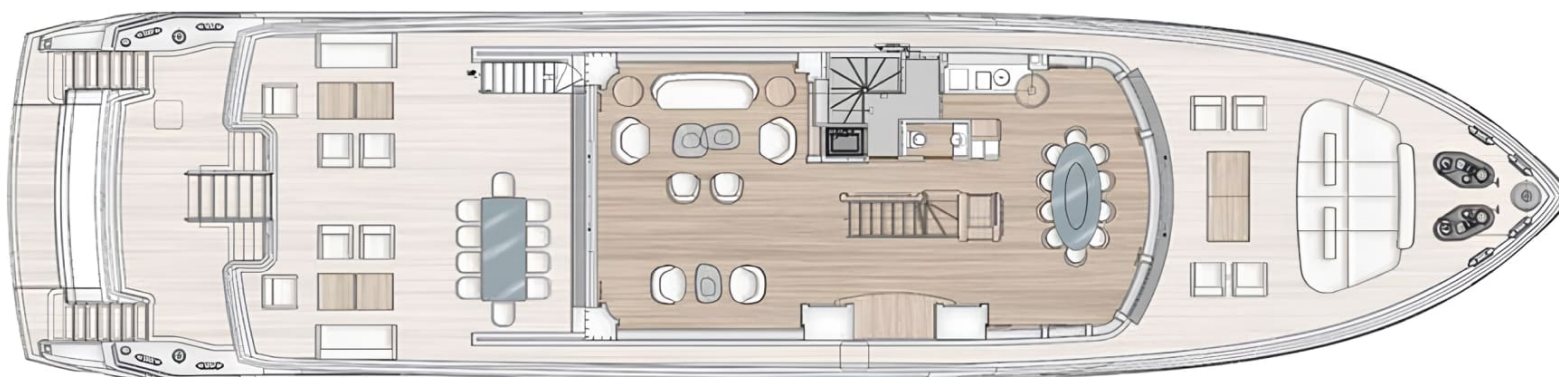
PROFILE



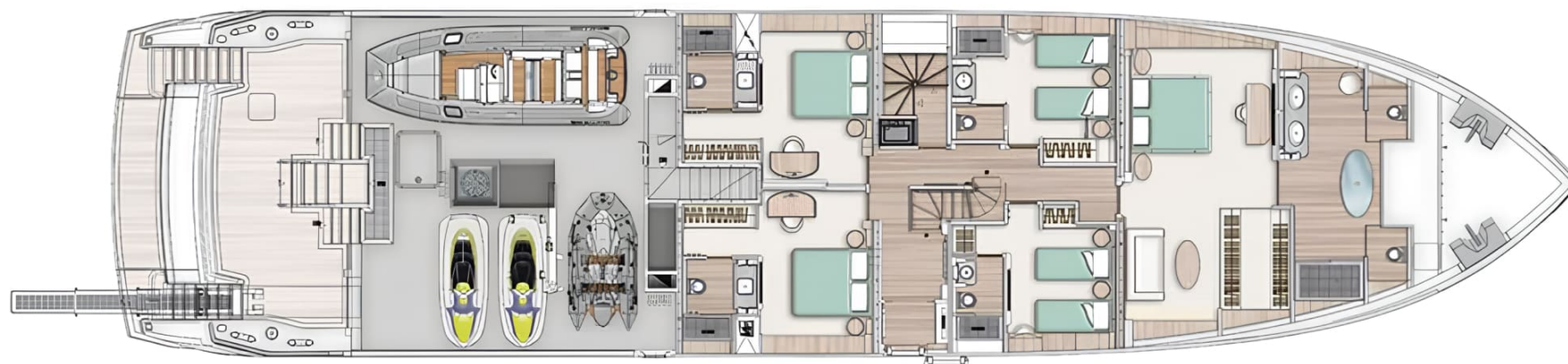
SUNDECK



BRIDGE DECK



UPPER DECK



MAIN DECK



LOWER DECK

EQUIPMENT

GENERAL	EXTERIOR	INTERIOR	ELECTRONICS AND NAVIGATION	OTHER
<ul style="list-style-type: none"> • Hybrid system • IMO Tier III Compliance • Reg Code Part A Compliance • Cold room arrangement located in the lower deck crew quarters on Lower stardboard side. 	<ul style="list-style-type: none"> • Sauna and shower arrangement in the lower deck beach area • Yacht Name on Transom in Stainless Steel Backlit: up to 8 letters (Register in stainless steel) • Awning for Upper Deck Aft and Forward Area: Nr.6 Carbon Fiber Poles for Aft, Nr.2 Carbon Fiber Poles per Forward Area, Awning for Bridge deck aft • No.8 underwater lights (Seavision SV14 LED) with RGB colour • Bollards on aft platform • Supply and installation of a Gaggenau VARIO Teppan Yaki on the fwd portside cabinet • Removable Stainless Steel shower on stern platform • 	<ul style="list-style-type: none"> • Supply and installation of nr. 2 wine "EuroCave" cellars mod. S-259V2 T in the lower deck, plus nr.1 in the storage area • Owner's Cabin on Bridge Deck (This option includes additional Oil/Water separator due to Gross Tonnage increase above 400GT) • Main Deck new layout supplied with: Nr. 2 guest cabins upgraded to VIP category, Nr. 2 guest cabins fwd reallocation, Play room arrangement • Guest cabin on the lower deck in place of the gym • Electric Blinds in Upper Deck Saloon, Owners Cabin, Dressing Room, Bathroom and main deck VIP's cabin (22 in total) • Wooden ... 	<ul style="list-style-type: none"> • Bow truster upgrade for SIEMENS system interface • Cathelco system (MMPP Sea Chest) • Fuel depuration system Alfa Laval MIB 503: System for the removal of - particles and water from fuel. Removal of water and particles improves the working conditions and reliability of the system. It also prevents serious wear and damages to the main engine • CCTV (1 camera for gangway and 1 in Engine Room) • Seatel 100 TV HD + Sailor 900 VSAT • Folbale back seat wheelhouse rest • Secondary Radar (Radar Furuno DRS4 NXT) interface with Chart - Plotter inclUpper Decking ... 	<ul style="list-style-type: none"> • Additional chain length (27,5m) per side: with this extra both chains are upgraded to 165m • Supply and installation of an all off/all on system from the cabin - entrance and from bed head panel • Upgrade for natural main wood finishing • Standard WC upgrade in the 6 cabins to Planus Geberit Tuma • Beauty line upgrade in Benetti blue color



KIRILL KUATOV

+377 607 93 15 20

+39 333 576 44 44

 [Send e-mail](#)

 WhatsApp

 Telegram

[More information about M/Y B.Yond 37M at www.nauyachts.com](#)

[Watch video](#)