



Brokerage

NAU
YACHTS

BLUE DODO

MOTOR YACHT FERRETTI 29.2M 2020

FLAG - BVI

MOTOR YACHT

BLUE DODO



BLUE DODO is a stunning 29.20-meter motor yacht, the result of a collaboration between Studio Zuccon International Project and the **Ferretti Group**, representing a significant advancement in the brand's design philosophy. This flagship model, certified with CE category, is built for exceptional comfort and performance. The yacht boasts an innovative layout: the master suite is positioned at the forward end of the main deck, offering unparalleled views and privacy. Four spacious guest cabins of equal size are located on the lower deck, providing maximum comfort and flexibility. The galley, designed by Ernestomeda, is positioned on the starboard side, and the three crew cabins are placed at the forward part of the lower deck, ensuring practicality and functionality. These features make **BLUE DODO** a versatile and luxurious choice for extended cruising. The yacht also offers expansive outdoor areas, including a spacious flybridge, perfect for relaxation and enjoying the fresh air.

BLUE DODO is powered by two MTU 16V 2000 M96L diesel engines, each delivering 2638 horsepower. With only 650 engine hours, it reaches a maximum speed of 28 knots and cruises comfortably at 25 knots, offering a range of 300 nautical miles at cruising speed. The yacht is equipped with an extensive list of premium options and has been meticulously maintained by its one owner, used solely for personal purposes.

BLUE DODO, hull number 21, is in impeccable condition and ready to offer you an unforgettable journey, with the perfect combination of comfort, design, and performance.

see more information about M/Y BLUE DODO at www.nauyachts.com

SPECIFICATION

| | |
|--------------------|--------------|
| SHIPYARD, MODEL | Ferretti 960 |
| BUILT | 2020 |
| LENGTH | 29.2 m |
| WATERLINE LENGTH | 22.34 m |
| HULL CONFIGURATION | PLANING |
| BEAM | 6.72 m |
| RANGE | 300 |
| DRAFT | 2.2 m |
| GROSS TONNAGE | 152 GT |
| YACHT CLASS | RINA |
| CABINS | 4+2 |
| MASTER CABIN | MAIN DECK |
| GUESTS | 8 |
| BERTHS | 8+4 |
| CREW | 4 |
| HEADS | 5+2 |

| | |
|--------------------------------------|------------------------------|
| EXTERIOR DESIGN | ZUCCON INTERNATIONAL PROJECT |
| INTERIOR DESIGN | FERRETTI GROUP |
| HULL | GRP |
| SUPERSTRUCTURE | GRP |
| ENGINES | 2 x MTU 16V 2638 h.p. |
| TYPE OF DRIVE | SHAFT LINE |
| ENGINE HOURS | 650 h |
| MAXIMUM SPEED | 28 kn |
| CRUISING SPEED | 25 kn |
| FUEL CONSUMPTION AT ECONOMICAL SPEED | ~ 620 l/h |
| FUEL | 10000 l |
| GREY WATER | 330 l |
| BLACK WATER | 330 l |
| FRESH WATER | 1500 l |
| DISPLACEMENT | 99 |

[see more information about M/Y BLUE DODO at www.nauyachts.com](http://www.nauyachts.com)



EXTERIOR FERRETTI 960 2020 MY BLUE DODO

M/Y BLUE DODO



EXTERIOR FERRETTI 960 2020 MY BLUE DODO

M/Y BLUE DODO



EXTERIOR FERRETTI 960 2020 MY BLUE DODO

M/Y BLUE DODO



EXTERIOR FERRETTI 960 2020 MY BLUE DODO

M/Y BLUE DODO



GARAGE

M/Y BLUE DODO



BOW LOUNGE AREA

M/Y BLUE DODO



FLYBRIDGE

M/Y BLUE DODO



FLYBRIDGE

M/Y BLUE DODO



FLYBRIDGE LOUNGE AREA

M/Y BLUE DODO



AFT MAIN DECK LOUNGE AREA

M/Y BLUE DODO



MAIN SALON LOUNGE AREA

M/Y BLUE DODO



CREW AREA

M/Y BLUE DODO



GALLEY

M/Y BLUE DODO



MAIN SALON LOBBY

M/Y BLUE DODO



MASTER CABIN

M/Y BLUE DODO



MASTER CABIN

M/Y BLUE DODO



MASTER BATHROOM

M/Y BLUE DODO



VIP CABIN

M/Y BLUE DODO



VIP CABIN

M/Y BLUE DODO



VIP BATHROOM

M/Y BLUE DODO



GYM

M/Y BLUE DODO



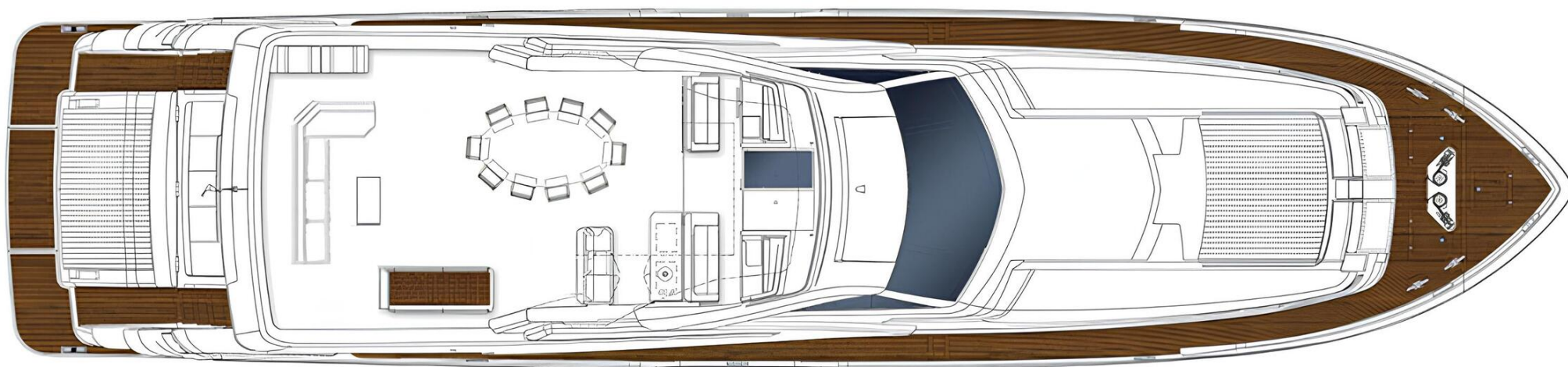
MAIN HELM STATION

M/Y BLUE DODO

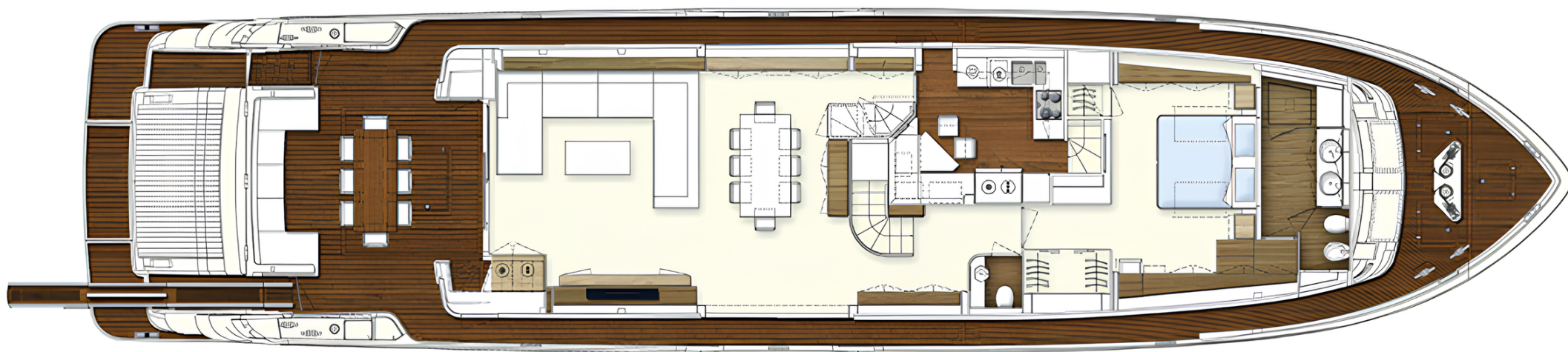
General Arrangement



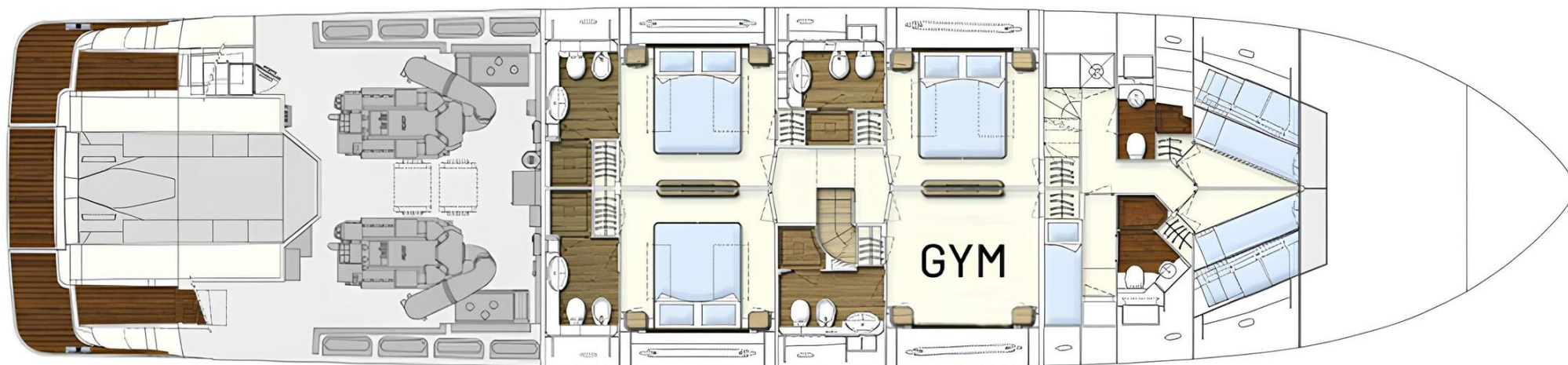
PROFILE



FLYBRIDGE



MAIN DECK



LOWER DECK



KIRILL KUATOV

+377 607 93 15 20

+39 333 576 44 44

 [Send e-mail](#)

 WhatsApp

 Telegram