



Brokerage

NAU
YACHTS

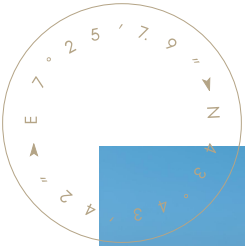
KAR

MOTOR YACHT RIVA 26.92M 2021

€5,500,000
FLAG - MALTA

MOTOR YACHT

KAR



KAR is a 26.92-metre **Riva 88 Folgore** motor yacht, built and delivered to her owner in 2021. She is a clear expression of Riva's signature philosophy, combining bold Italian design, high performance and advanced engineering solutions. The GRP planing hull and the distinctive, dynamic **Folgore** profile ensure confident, stable behaviour both at high speeds and during relaxed cruising.

The yacht is powered by twin MTU 16V 2000 M96L engines, each producing 2,638 hp, delivering a top speed of up to 38 knots and a cruising speed of around 32 knots. Gyroscopic stabilisers enhance comfort underway and at anchor, while upgraded sound insulation provides a quiet and refined onboard environment.

Accommodation is arranged for up to eight guests in four en-suite cabins. The full-beam master suite, located on the lower deck, features a king-size bed, walk-in wardrobe and a spacious bathroom. A VIP cabin and two guest cabins complete the layout. The crew quarters, separated from guest areas, accommodate up to four crew members in two cabins, ensuring a high level of privacy and service.

The main deck saloon is filled with natural light thanks to extensive panoramic glazing and includes a formal dining area for up to ten guests. Interiors are finished with carefully selected bespoke materials, natural wood and leather, complemented by an upgraded lighting system. The galley is fully equipped with modern appliances, making the yacht equally well suited for extended cruising or charter use.

Outdoor areas are designed for relaxation and socialising. The aft deck hosts an all-fresco dining area for eight, the foredeck is arranged as a lounge space, and the flybridge combines sunbathing, seating and dining zones. The upgraded garage accommodates both a tender and a jet ski.

Maintained in excellent technical and cosmetic condition, **KAR** benefited from a full exterior repaint and a series of interior and equipment upgrades in 2024. Fully ready for operation, she represents a well-balanced combination of speed, comfort and the unmistakable elegance of the **Riva** brand.

[see more information about M/Y KAR at www.nauyachts.com](http://www.nauyachts.com)

SPECIFICATION

SHIPYARD, MODEL	Riva Sportfly 88' Folgore
BUILT	2021
LENGTH	26.92 m
WATERLINE LENGTH	22.12 m
HULL CONFIGURATION	PLANING
BEAM	6.31 m
RANGE	350
DRAFT	1.98 m
GROSS TONNAGE	96 GT
YACHT CLASS	RINA
CABINS	4+2
MASTER CABIN	LOWER DECK
GUESTS	8
BERTHS	8+4
CREW	4
HEADS	4+2

EXTERIOR DESIGN	OFFICINA ITALIANA DESIGN
INTERIOR DESIGN	OFFICINA ITALIANA DESIGN
HULL	GRP
SUPERSTRUCTURE	GRP
ENGINES	2 x MTU 16V 2638 h.p.
TYPE OF DRIVE	SHAFT LINE
ENGINE HOURS	N/A
MAXIMUM SPEED	38 kn
CRUISING SPEED	32 kn
FUEL CONSUMPTION AT ECONOMICAL SPEED	~ 450 l/h
FUEL	8000 l
GREY WATER	330 l
BLACK WATER	330 l
FRESH WATER	1200 l
DISPLACEMENT	82

[see more information about M/Y KAR at www.nauyachts.com](http://www.nauyachts.com)



EXTERIOR RIVA 88' FOLGORE 2021 MY KAR

M/Y KAR



EXTERIOR RIVA 88' FOLGORE 2021 MY KAR

M/Y KAR



FLYBRIDGE

M/Y KAR



BOW LOUNGE AREA

M/Y KAR



COCKPIT SEATING AREA

M/Y KAR



EXTERIOR RIVA 88' FOLGORE 2021 MY KAR

M/Y KAR



MAIN SALON LOUNGE AREA

M/Y KAR



MAIN SALON LOUNGE AREA

M/Y KAR



MAIN SALON DINING AREA

M/Y KAR



MASTER CABIN

M/Y KAR



MASTER BATHROOM

M/Y KAR



MASTER BATHROOM

M/Y KAR



VIP CABIN

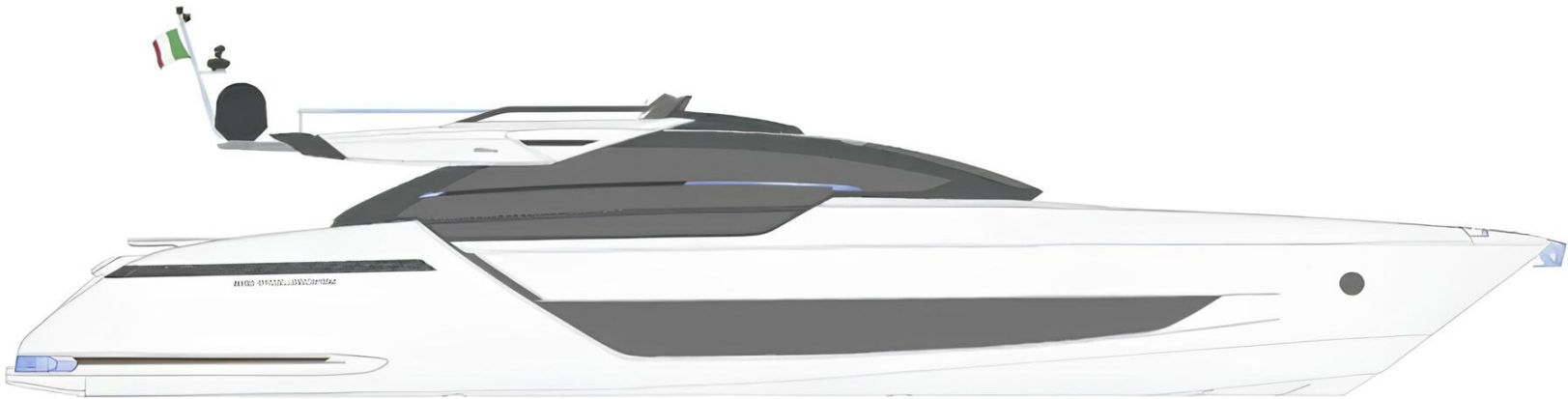
M/Y KAR



GUEST CABIN

M/Y KAR

General Arrangement



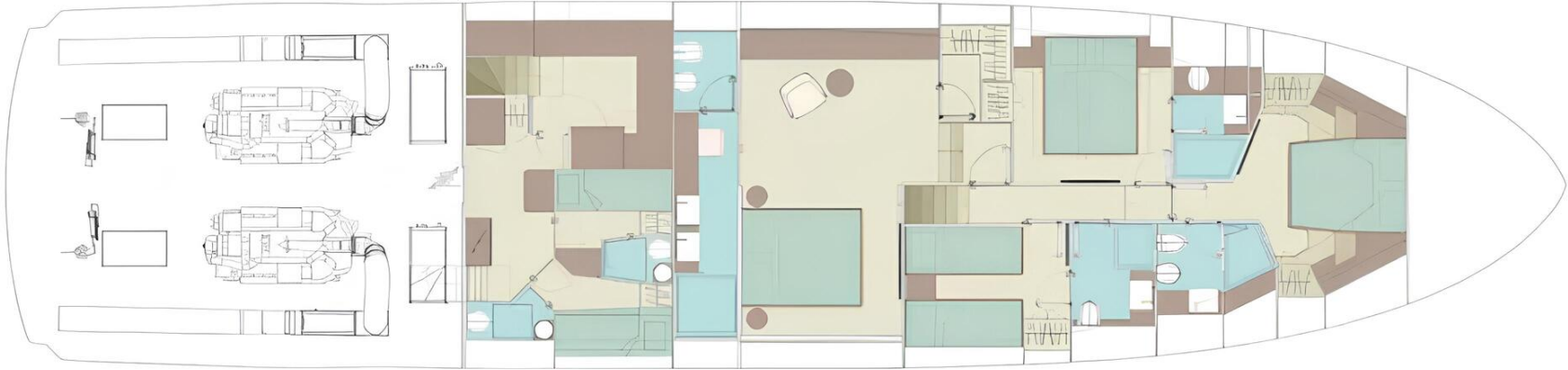
PROFILE



FLYBRIDGE



MAIN DECK



LOWER DECK



KIRILL KUATOV

+377 607 93 15 20

+39 333 576 44 44

 [Send e-mail](#)

 WhatsApp

 Telegram

[More information about M/Y KAR at www.nauyachts.com](http://www.nauyachts.com)

[Watch video](#)