



New Build

NAU
YACHTS

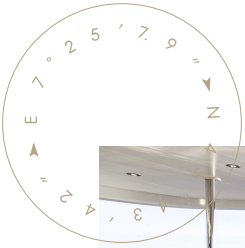
C133

MOTOR YACHT CONRAD SHIPYARD 40M 2027

FLAG -

MOTOR YACHT

C133



Presenting the **Conrad C133**, a remarkable 40-meter motor yacht that combines elegance and performance. Built to the highest Northern European standards, the **Conrad C133** boasts a robust steel hull with a lightweight aluminum superstructure, offering both durability and agility. With sleek, distinctive lines crafted by Raymond Langton and realized through proven naval architecture by Diana Yacht Design of the Netherlands, this yacht's silhouette exudes both sophistication and power.

Once on board, you'll find a layout that rivals much larger yachts, providing spacious living areas designed for maximum comfort. **Conrad's** expert craftsmanship is evident in the high-quality finishes and refined decor of the interior. Five spacious staterooms accommodate up to ten guests, ensuring privacy and relaxation for everyone on board.

The **Conrad C133** features a displacement hull, delivering stability and a smooth ride in all sea conditions. With twin engines, the yacht cruises comfortably at 11 knots, reaches a top speed of 13 knots, and offers an impressive range of 4,000 nautical miles at 10.5 knots, making it ideal for extended journeys and exploration of distant horizons with ease and confidence.

A wide array of amenities enhances both relaxation and entertainment, whether you're unwinding in the elegant salon or taking in panoramic views from the expansive sundeck - every moment on board is crafted to provide an unmatched yachting experience.

Available as a semi-custom model, the **Conrad C133** invites discerning owners to personalize their yacht, ensuring each vessel is as unique as its owner. Embrace the opportunity to own a masterpiece of design and engineering. The **Conrad C133** is not just a yacht; it's a statement of refinement and a gateway to extraordinary sea adventures.

[see more information about M/Y C133 at www.nauyachts.com](http://www.nauyachts.com)

SPECIFICATION

SHIPYARD, MODEL	Conrad Shipyard C133
DELIVERY AT THE SHIPYARD	2027
LENGTH	40 m
WATERLINE LENGTH	35.5 m
HULL CONFIGURATION	DISPLACEMENT
BEAM	8.3 m
RANGE	4000
DRAFT	2.65 m
GROSS TONNAGE	393 GT
YACHT CLASS	MCA LY3
CABINS	5+3
MASTER CABIN	MAIN DECK
GUESTS	10
BERTHS	10+5
CREW	5
HEADS	8+3

EXTERIOR DESIGN	REYMOND LANGTON
INTERIOR DESIGN	CONRAD SHIPYARD
HULL	STEEL
SUPERSTRUCTURE	ALUMINIUM
ENGINES	2 x CAT C18 670 h.p.
TYPE OF DRIVE	SHAFT LINE
ENGINE HOURS	N/A
MAXIMUM SPEED	13 kn
CRUISING SPEED	11 kn
FUEL CONSUMPTION AT ECONOMICAL SPEED	N/A
FUEL	48600 l
GREY WATER	3320 l
BLACK WATER	3320 l
FRESH WATER	10500 l
DISPLACEMENT	395

[see more information about M/Y C133 at www.nauyachts.com](http://www.nauyachts.com)



EXTERIOR CONRAD C133

M/Y C133



EXTERIOR CONRAD C133

M/Y C133



EXTERIOR CONRAD C133

M/Y C133



EXTERIOR CONRAD C133

M/Y C133



EXTERIOR CONRAD C133

M/Y C133



EXTERIOR CONRAD C133

M/Y C133



EXTERIOR CONRAD C133

M/Y C133



BOW AREA

M/Y C133



SUNDECK

M/Y C133



AFT UPPER DECK DINING AREA

M/Y C133



AFT UPPER DECK LOUNGE AREA

M/Y C133



AFT UPPER DECK DINING AREA

M/Y C133



AFT UPPER DECK LOUNGE AREA

M/Y C133



AFT UPPER DECK LOUNGE AREA

M/Y C133



STAIRS FROM MD TO SD

M/Y C133



AFT MAIN DECK DINING AREA

M/Y C133



BOW LOUNGE AREA

M/Y C133



GARAGE

M/Y C133



MAIN HELM STATION

M/Y C133



MAIN HELM STATION

M/Y C133



MAIN SALON

M/Y C133



MAIN SALON LOUNGE AREA

M/Y C133



MAIN SALON LOUNGE AREA

M/Y C133



MAIN SALON LOUNGE AREA

M/Y C133



MAIN SALON LOUNGE AREA

M/Y C133



MAIN SALON DINING AREA

M/Y C133



MAIN SALON DINING AREA

M/Y C133



MAIN SALON DINING AREA

M/Y C133



GALLEY

M/Y C133



GALLEY

M/Y C133



MASTER CABIN

M/Y C133



MASTER CABIN

M/Y C133



MASTER CABIN

M/Y C133



MASTER CABIN WORKSPACE

M/Y C133



MASTER BATHROOM

M/Y C133



MASTER BATHROOM

M/Y C133



STAIRS FROM MD TO LD

M/Y C133



VIP CABIN

M/Y C133



VIP CABIN

M/Y C133



VIP CABIN

M/Y C133



VIP CABIN

M/Y C133



UPPER DECK SALOON

M/Y C133



UPPER DECK SALOON

M/Y C133



UPPER DECK SALOON

M/Y C133



UPPER DECK SALOON

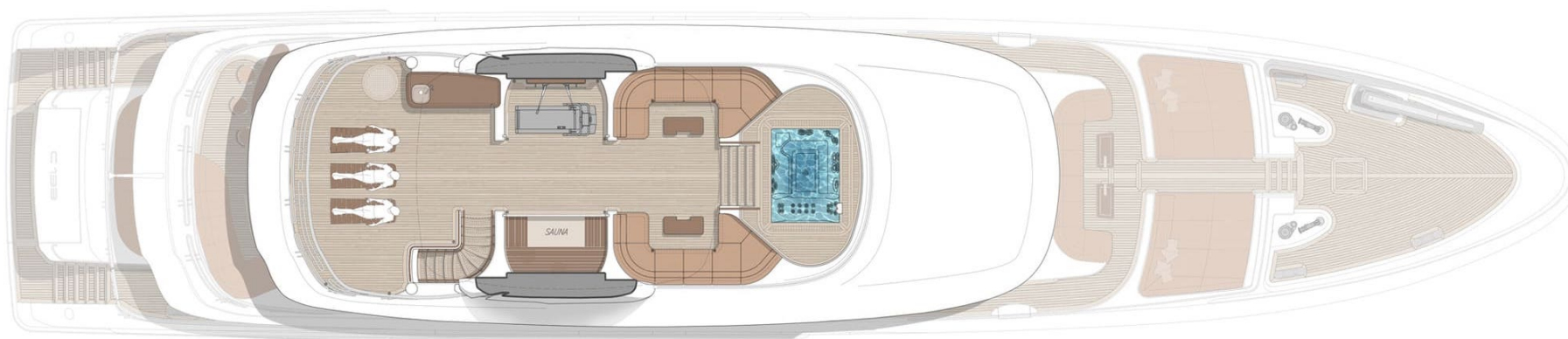
M/Y C133



UPPER DECK SALOON

M/Y C133

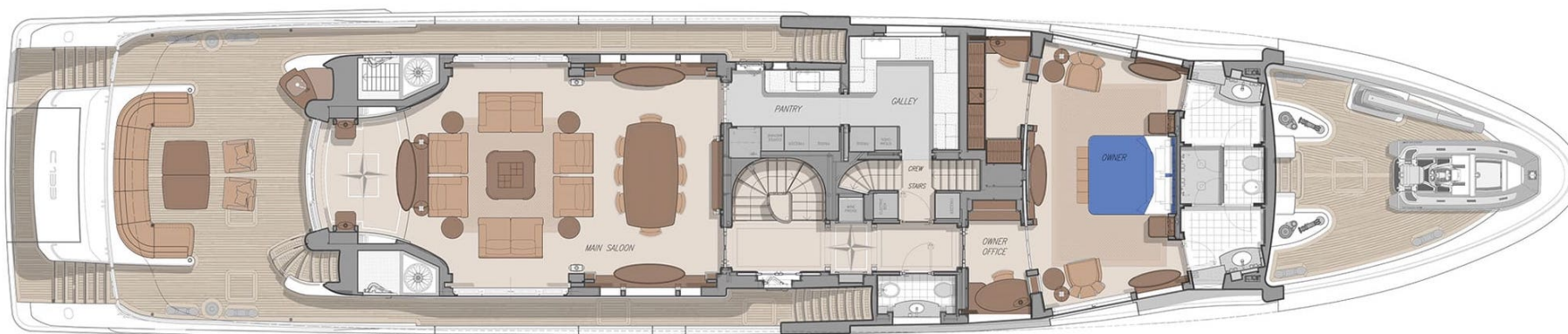
General Arrangement



SUNDECK

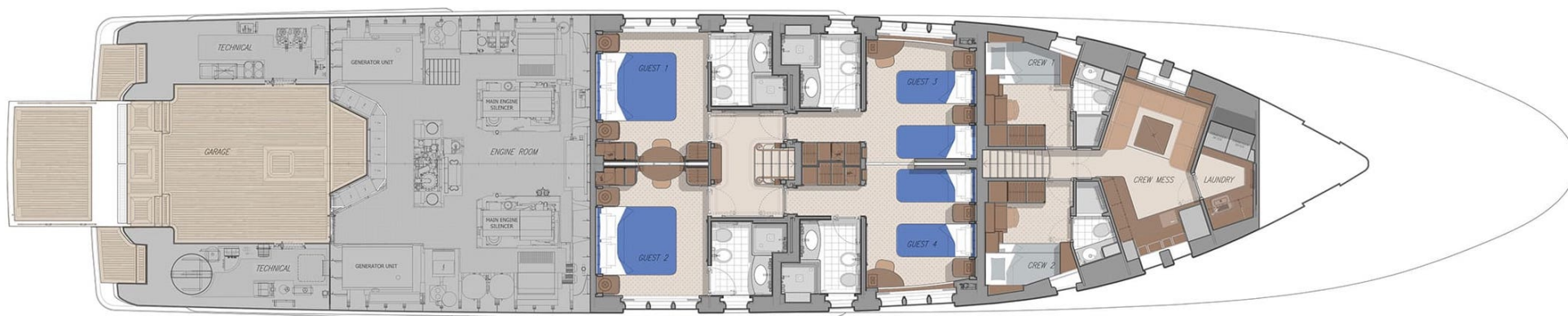


UPPER DECK



(BALCONIES AND DOOR'S CLOSED)

MAIN DECK



LOWER DECK



KIRILL KUATOV

+377 607 93 15 20

+39 333 576 44 44

 [Send e-mail](#)

 WhatsApp

 Telegram

[More information about M/Y C133 at www.nauyachts.com](#)

[Watch video](#)