



Brokerage

NAU
YACHTS

MINI K2

MOTOR YACHT EXTRA YACHTS BY ISA 29.99M 2022

€9,300,000
FLAG - CAYMAN ISLANDS

MOTOR YACHT

MINI K2



MINI K2 is a high-performance motor yacht from the **Extra X99 Fast** series, measuring just under 30 meters in length. Combining sporty character with luxurious comfort, this custom-built yacht features exterior design by Francesco Guida Design and interiors by Luca Dini Design & Architecture. Her sleek lines are enhanced by large glass surfaces, flooding the interiors with natural light and offering seamless indoor-outdoor living.

The main deck features a bright, open-plan salon with plush seating and a dining area. Below deck, accommodation is offered for up to 8 guests in four cabins, including a full-beam master suite, all with en-suite bathrooms. The separate crew quarters for up to 4 crew members ensure maximum guest privacy and smooth onboard service.

Outdoor spaces are optimized for both entertaining and relaxation. A forward lounge offers wind-protected seating, while the flybridge includes a bar, sunbeds, and a spacious seating area. Aft, the beach club features fold-out balconies and integrated sea access, along with a garage for a tender and water toys.

Powered by twin MTU 16V2000 M96L engines paired with MJP waterjets, **MINI K2** reaches a top speed of 34 knots and cruises comfortably at around 27 knots. A Seakeeper stabilization system and Dometic Condaria air conditioning ensure onboard comfort both underway and at anchor. Built in GRP and RINA-classed, the yacht is engineered for high-speed coastal cruising with maximum efficiency.

MINI K2 is a modern, stylish performance yacht designed for owners who value speed, compact versatility, and smart onboard living. She is equally suited for weekend escapes or fast-paced island hopping in total comfort and style.

see more information about M/Y MINI K2 at www.nauyachts.com

SPECIFICATION

SHIPYARD, MODEL	Extra Yachts by ISA X99 Fast
BUILT	2022
LENGTH	29.99 m
WATERLINE LENGTH	23.96 m
HULL CONFIGURATION	PLANING
BEAM	7.1 m
RANGE	325
DRAFT	1.35 m
GROSS TONNAGE	161 GT
YACHT CLASS	RINA
CABINS	4+2
MASTER CABIN	LOWER DECK
GUESTS	9
BERTHS	9+4
CREW	4
HEADS	4+2

EXTERIOR DESIGN	GUIDA DESIGN
INTERIOR DESIGN	LUCA DINI DESIGN & ARCHITECTURE
HULL	GRP
SUPERSTRUCTURE	GRP
ENGINES	2 x MTU 16V2000 M96L 2600 h.p.
TYPE OF DRIVE	JET
ENGINE HOURS	750 h
MAXIMUM SPEED	34 kn
CRUISING SPEED	27 kn
FUEL CONSUMPTION AT ECONOMICAL SPEED	~ 168 l/h
FUEL	10450 l
GREY WATER	580 l
BLACK WATER	580 l
FRESH WATER	2200 l
DISPLACEMENT	100

[see more information about M/Y MINI K2 at www.nauyachts.com](http://www.nauyachts.com)



EXTERIOR EXTRA YACHTS BY ISA X99 FAST
2022 MY MINI K2

M/Y MINI K2



EXTERIOR EXTRA YACHTS BY ISA X99 FAST
2022 MY MINI K2

M/Y MINI K2



EXTERIOR EXTRA YACHTS BY ISA X99 FAST
2022 MY MINI K2

M/Y MINI K2



EXTERIOR EXTRA YACHTS BY ISA X99 FAST
2022 MY MINI K2

M/Y MINI K2



JET SKIS IN THE BOW AREA

M/Y MINI K2



FLYBRIDGE

M/Y MINI K2



FLYBRIDGE

M/Y MINI K2



COCKPIT SEATING AREA

M/Y MINI K2



COCKPIT SEATING AREA

M/Y MINI K2



COCKPIT SEATING AREA

M/Y MINI K2



COCKPIT DINING AREA

M/Y MINI K2



COCKPIT DINING AREA

M/Y MINI K2



MAIN SALON LOUNGE AREA

M/Y MINI K2



MASTER CABIN

M/Y MINI K2



MASTER BATHROOM

M/Y MINI K2



VIP CABIN

M/Y MINI K2



VIP BATHROOM

M/Y MINI K2



GUEST CABIN

M/Y MINI K2



GUEST BATHROOM

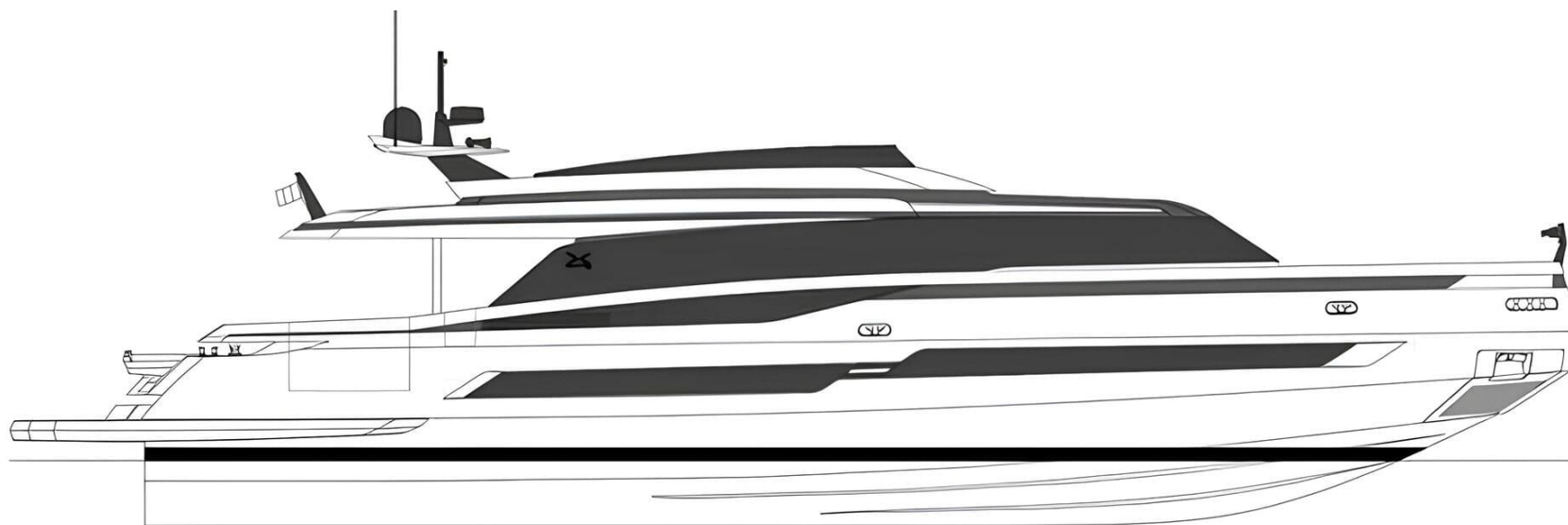
M/Y MINI K2



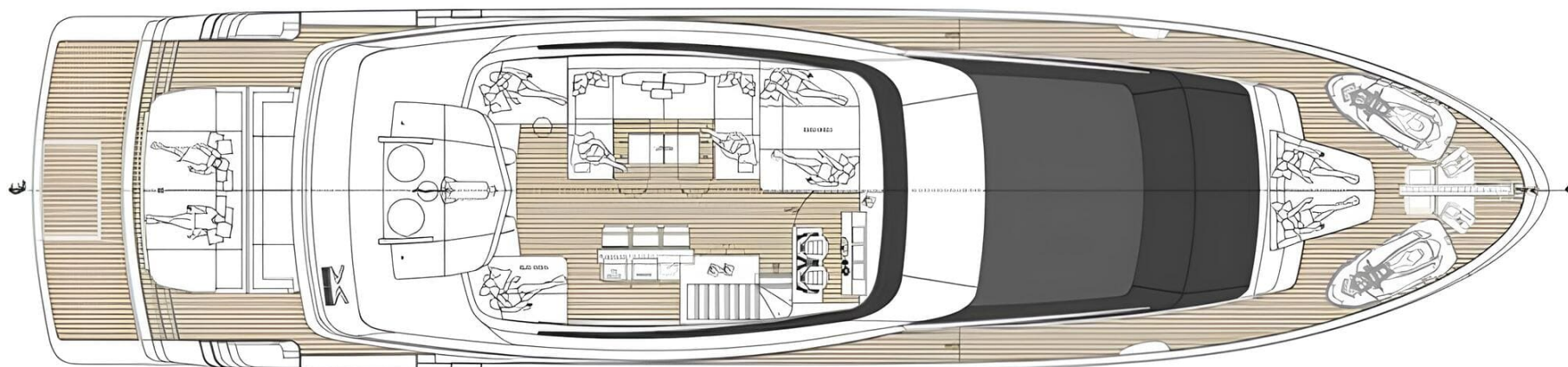
MAIN HELM STATION

M/Y MINI K2

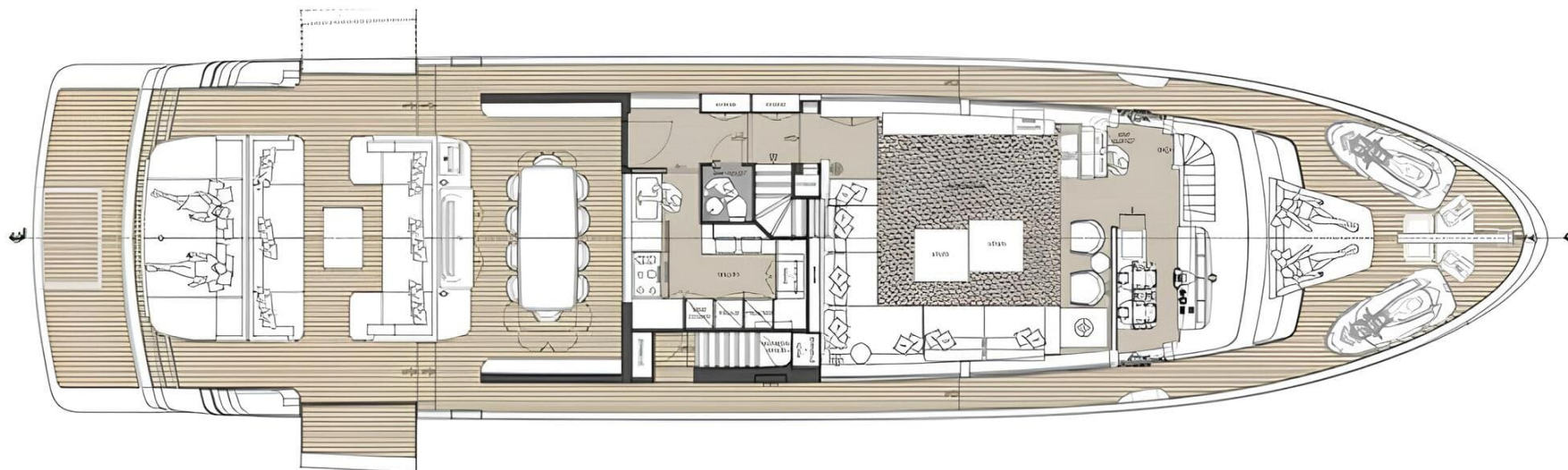
General Arrangement



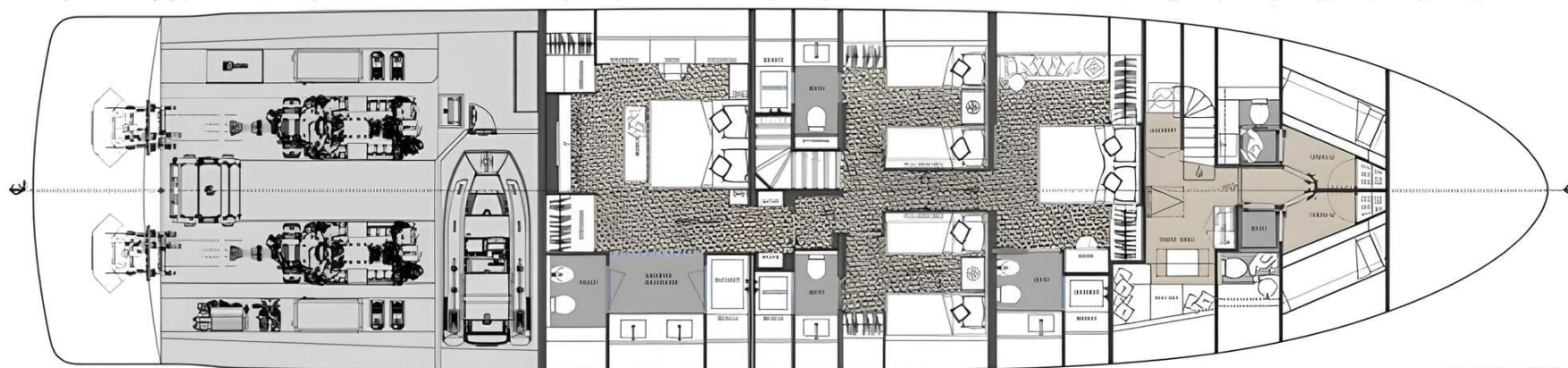
PROFILE



FLYBRIDGE



MAIN DECK



LOWER DECK



KIRILL KUATOV

+377 607 93 15 20

+39 333 576 44 44

 [Send e-mail](#)

 WhatsApp

 Telegram

[More information about M/Y MINI K2 at www.nauyachts.com](http://www.nauyachts.com)

[Watch video](#)