



New Build

NAU
YACHTS

CROSSOVER 42

MOTOR YACHT COLUMBUS YACHTS 42M 2027

FLAG -

MOTOR YACHT

CROSSOVER 42



Introducing the **Crossover 42**, the inaugural vessel of **Columbus Yachts'** new expedition line, designed to make extended voyages comfortable, safe, and incredibly exciting. With a robust steel hull and aluminum superstructure, this yacht offers nearly limitless possibilities for ocean exploration. The bulbous bow is optimized for smooth and economical cruising, with a range of 4,000 miles.

The yacht's exterior exudes power and charisma. Expansive tinted glass surfaces allow ample natural light to flood the interior and are a key design element, emphasizing the bold and slightly aggressive aesthetic of the model. Hydro Tec's main design concepts focus on a voluminous forward section and a spacious aft deck, intended for onboard entertainment and relaxation. At anchor, the aft deck transforms into a vast beach club with a pool and a lounging area furnished with chairs, sunbeds, and loungers. During passages, the pool is covered with a sliding roof, and the furniture is stowed away to make room for an 8-meter tender, jet skis, and other water toys, which can be launched and retrieved using a crane mounted on the upper deck.

The minimalist interiors by Guida Design feature smooth lines, rounded corners, and a subtle play of light and shadow, creating an atmosphere of coziness and tranquility. The optimized layout ensures complete privacy for the owner and guests, as well as ideal working conditions for the crew. The owner's suite, located forward on the main deck, occupies nearly half of the living space. Four guest cabins are midship on the lower deck. The crew mess and crew cabins are located forward on the lower deck, with the captain's cabin adjacent to the wheelhouse.

Powered by two Caterpillar C32 engines with 1,200 hp each, the yacht can reach speeds up to 14.5 knots, with a cruising speed of 12 knots. Its relatively shallow draft allows the yacht to enter shallow bays and dock in most ports. Two water makers ensure a constant supply of fresh water, and ample storage guarantees sufficient provisions. The owner of the **Crossover 42** needs only to choose a direction and embark on a long and exciting journey.

[see more information about M/Y Crossover 42 at www.nauyachts.com](http://www.nauyachts.com)

SPECIFICATION

SHIPYARD, MODEL	Columbus Yachts Crossover 42
DELIVERY AT THE SHIPYARD	2027
LENGTH	42 m
WATERLINE LENGTH	N/A
HULL CONFIGURATION	DISPLACEMENT
BEAM	9.34 m
RANGE	4000
DRAFT	2.6 m
GROSS TONNAGE	445 GT
YACHT CLASS	N/A
CABINS	5+5
MASTER CABIN	MAIN DECK
GUESTS	10
BERTHS	10+9
CREW	9
HEADS	6+5

EXTERIOR DESIGN	HYDRO TEC
INTERIOR DESIGN	FRANCESCO GUIDA
HULL	STEEL
SUPERSTRUCTURE	ALUMINIUM
ENGINES	2 x CAT C32 ACERT 1200 h.p.
TYPE OF DRIVE	SHAFT LINE
ENGINE HOURS	N/A
MAXIMUM SPEED	14.5 kn
CRUSING SPEED	12 kn
FUEL CONSUMPTION AT ECONOMICAL SPEED	N/A
FUEL	60000 l
GREY WATER	N/A
BLACK WATER	N/A
FRESH WATER	8500 l
DISPLACEMENT	N/A

[see more information about M/Y Crossover 42 at www.nauyachts.com](http://www.nauyachts.com)



EXTERIOR COLUMBUS YACHTS CROSSOVER
42 NEW

M/Y CROSSOVER 42



EXTERIOR COLUMBUS YACHTS CROSSOVER 42 NEW

M/Y CROSSOVER 42



EXTERIOR COLUMBUS YACHTS CROSSOVER 42 NEW

M/Y CROSSOVER 42



EXTERIOR COLUMBUS YACHTS CROSSOVER 42 NEW

M/Y CROSSOVER 42



EXTERIOR COLUMBUS YACHTS CROSSOVER 42 NEW

M/Y CROSSOVER 42



EXTERIOR COLUMBUS YACHTS CROSSOVER
42 NEW

M/Y CROSSOVER 42



SUNDECK

M/Y CROSSOVER 42



SUNDECK

M/Y CROSSOVER 42



SUNDECK DINING AREA

M/Y CROSSOVER 42



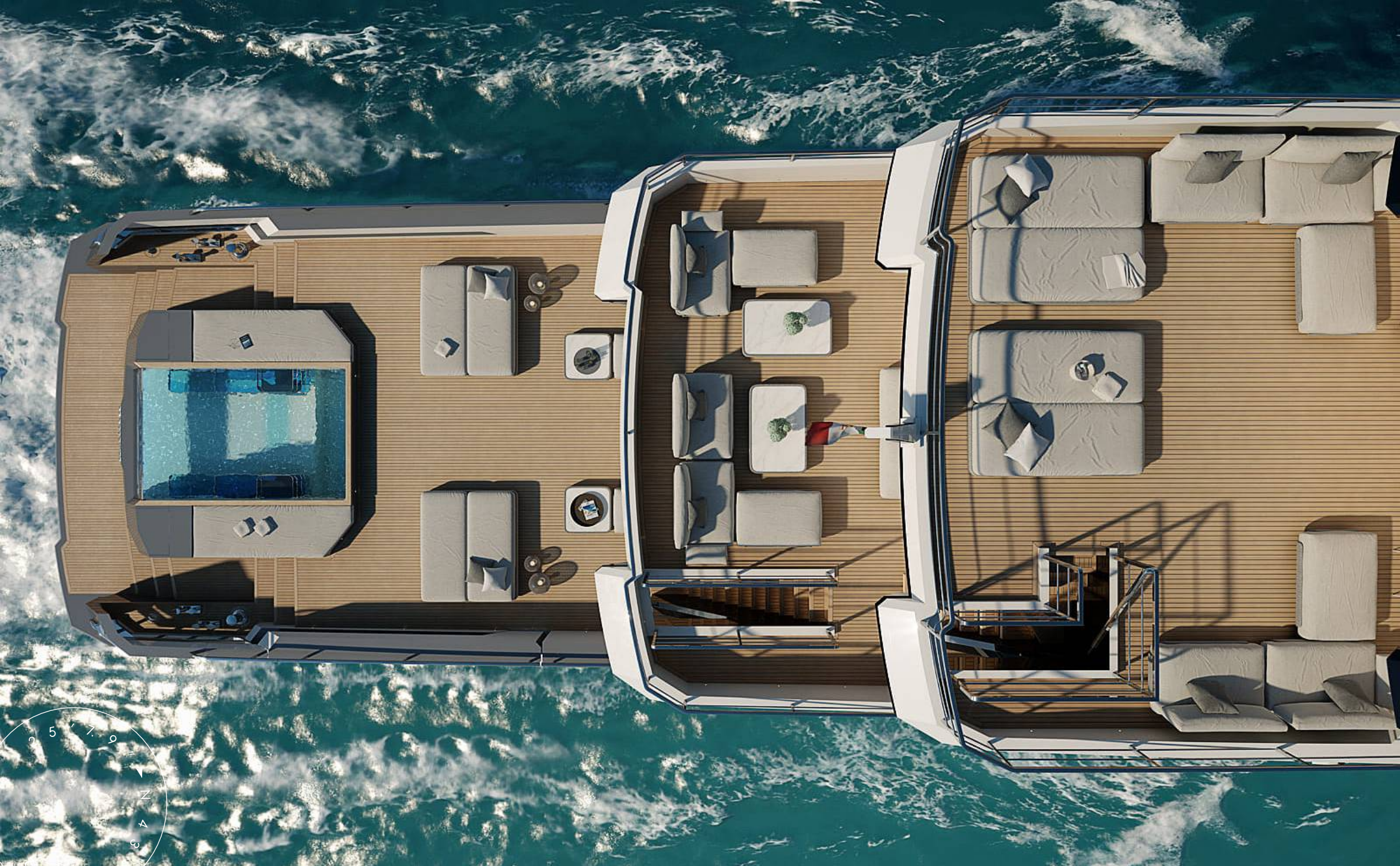
AFT UPPER DECK LOUNGE AREA

M/Y CROSSOVER 42



BOW LOUNGE AREA

M/Y CROSSOVER 42



STERN

M/Y CROSSOVER 42



BEACH CLUB

M/Y CROSSOVER 42



BEACH CLUB

M/Y CROSSOVER 42



BEACH CLUB

M/Y CROSSOVER 42



MAIN SALON LOUNGE AREA

M/Y CROSSOVER 42



MAIN SALON LOUNGE AREA

M/Y CROSSOVER 42



MAIN SALON LOUNGE AREA

M/Y CROSSOVER 42



MAIN SALON LOUNGE AREA

M/Y CROSSOVER 42



MAIN SALON BAR

M/Y CROSSOVER 42



MASTER CABIN

M/Y CROSSOVER 42



MASTER CABIN

M/Y CROSSOVER 42



MASTER CABIN

M/Y CROSSOVER 42



MASTER CABIN

M/Y CROSSOVER 42



MASTER CABIN LOUNGE AREA

M/Y CROSSOVER 42



MASTER CABIN LOUNGE AREA

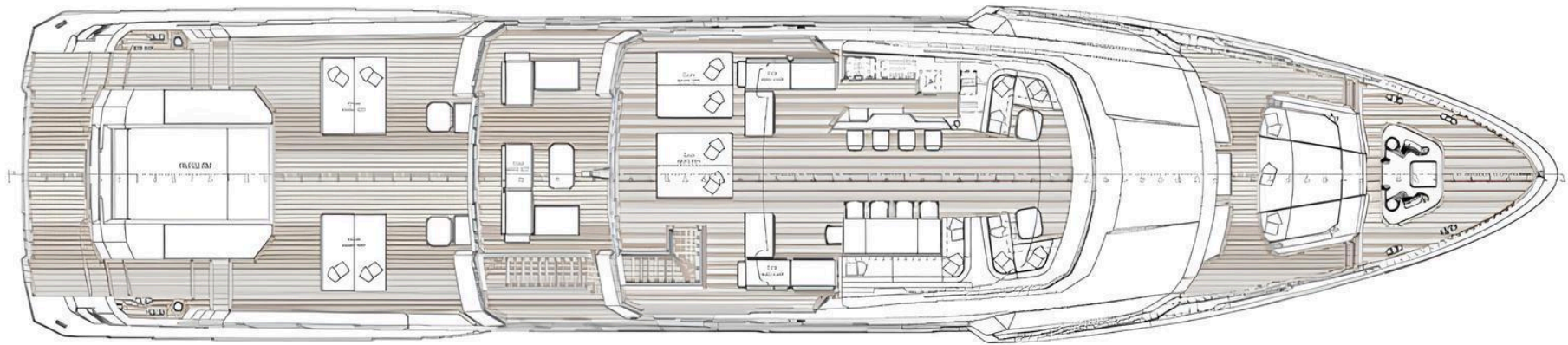
M/Y CROSSOVER 42



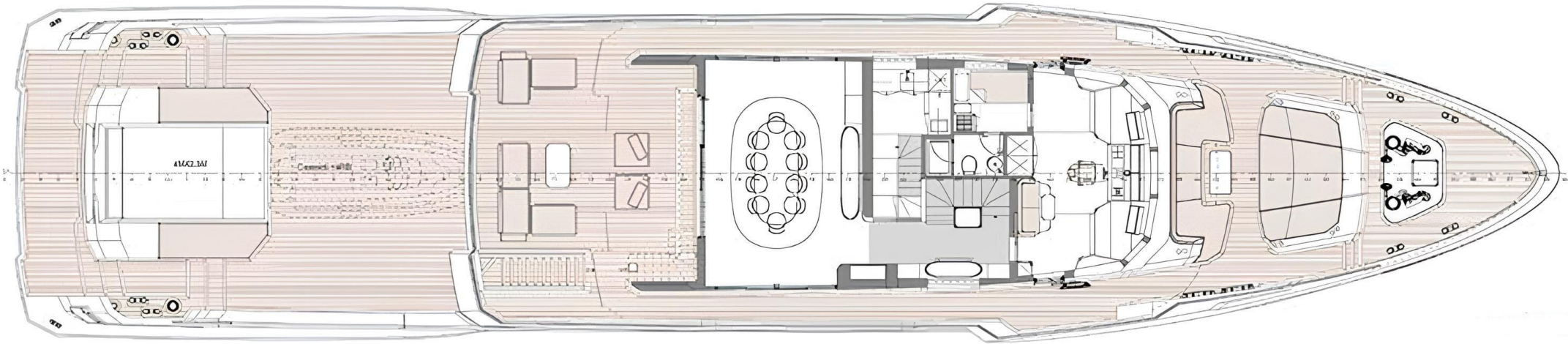
MASTER BATHROOM

M/Y CROSSOVER 42

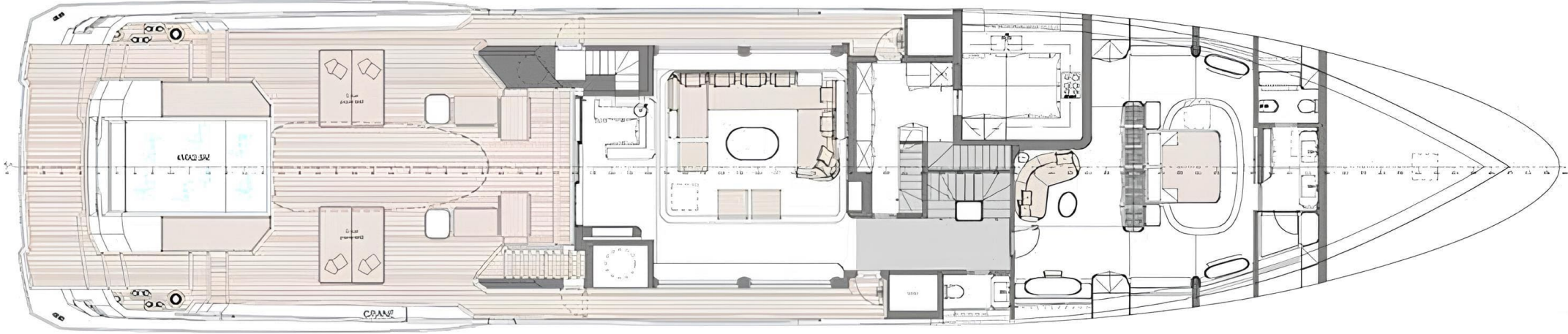
General Arrangement



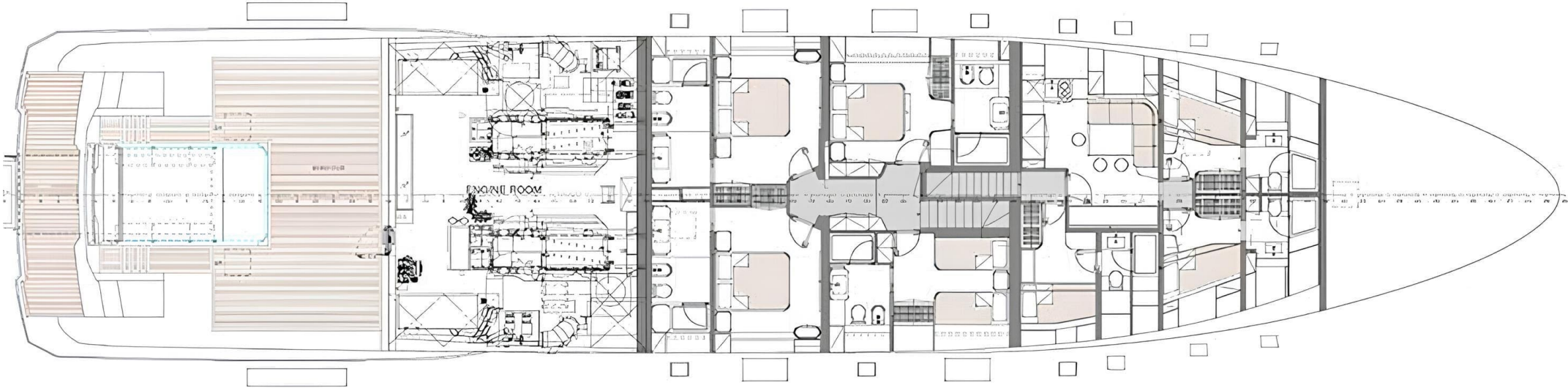
SUNDECK



UPPER DECK



MAIN DECK



LOWER DECK



KIRILL KUATOV

+377 607 93 15 20

+39 333 576 44 44

[Send e-mail](#)

[WhatsApp](#)

[Telegram](#)