



Brokerage

NAU
YACHTS

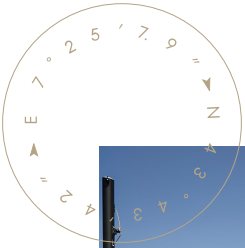
JESMA II

MOTOR YACHT ADMIRAL 40M 2017

€9,900,000
FLAG - GREECE

MOTOR YACHT

JESMA II



JESMA II brings together the lightness of an aluminium hull, contemporary architectural lines and consistently reliable seakeeping - qualities that have kept her thoroughly relevant since her launch in 2017. Her elongated profile and expansive sundeck, shaded by a distinctive overhang, create an inviting open-air environment, while the wide swim platform forms a functional waterside lounge that anchors the yacht's outdoor life.

Accommodation is arranged for up to 12 guests in six cabins. The master suite sits on the main deck with panoramic glazing and a strong sense of privacy. A second "owner-quality" cabin - a spacious VIP with an additional berth — occupies the upper deck, while four well-appointed guest cabins lie on the lower deck. Every suite features an en-suite bathroom finished in Carrara marble, underpinning the yacht's refined aesthetic.

JESMA II's technical condition is reinforced by a disciplined maintenance history. Twin Caterpillar C32 ACERT engines deliver a comfortable cruising speed of around 15 knots, while CMC Zero-Speed stabilisers ensure steadiness both underway and at anchor. Recent works include full servicing of engines and generators, upgrades to the navigation suite, renewal of teak decking, installation of new cameras and a complete hull polish - placing all major systems and surfaces in prime condition. Her onboard technology meets modern expectations: an iPad-controlled lighting and audio system, Apple TV in every cabin and a custom-designed evening mode that subtly transforms the ambience after sunset.

[see more information about M/Y JESMA II at www.nauyachts.com](http://www.nauyachts.com)

SPECIFICATION

SHIPYARD, MODEL	Admiral Impero 40
BUILT	2017
LENGTH	40 m
WATERLINE LENGTH	44.8 m
HULL CONFIGURATION	SEMI-DISPLACEMENT
BEAM	8 m
RANGE	2000
DRAFT	1.9 m
GROSS TONNAGE	299 GT
YACHT CLASS	RINA
CABINS	6+4
MASTER CABIN	MAIN DECK
GUESTS	12
BERTHS	12+8
CREW	8
HEADS	7+4

EXTERIOR DESIGN	LUCA DINI DESIGN & ARCHITECTURE
INTERIOR DESIGN	GIAN MARCO COMPANINO DESIGN
HULL	ALUMINUM
SUPERSTRUCTURE	ALUMINIUM
ENGINES	2 x Caterpillar C32 ACERT 1900 h.p.
TYPE OF DRIVE	SHAFT LINE
ENGINE HOURS	2037 h
MAXIMUM SPEED	18 kn
CRUSING SPEED	15 kn
FUEL CONSUMPTION AT ECONOMICAL SPEED	~ 480 l/h
FUEL	33000 l
GREY WATER	N/A
BLACK WATER	N/A
FRESH WATER	8000 l
DISPLACEMENT	N/A

[see more information about M/Y JESMA II at www.nauyachts.com](http://www.nauyachts.com)



EXTERIOR ADMIRAL IMPERO 40 2017 MY
JESMA II

M/Y JESMA II



EXTERIOR ADMIRAL IMPERO 40 2017 MY
JESMA II

M/Y JESMA II



EXTERIOR ADMIRAL IMPERO 40 2017 MY
JESMA II

M/Y JESMA II



AFT AREA

M/Y JESMA II



SUNDECK LOUNGE AREA

M/Y JESMA II



SUNDECK LOUNGE AREA

M/Y JESMA II



SUNBATHING AREA ON THE SUNDECK

M/Y JESMA II



SUNBATHING AREA ON THE SUNDECK

M/Y JESMA II



SUNDECK LOUNGE AREA

M/Y JESMA II



SUNDECK LOUNGE AREA

M/Y JESMA II



DINING AREA AFT ON THE UPPER DECK

M/Y JESMA II



LOUNGE AREA ON THE BOW

M/Y JESMA II



BEACH CLUB

M/Y JESMA II



MAIN SALON

M/Y JESMA II



DINING AREA IN THE MAIN SALON

M/Y JESMA II



DINING AREA IN THE MAIN SALON

M/Y JESMA II



MASTER CABIN

M/Y JESMA II



MAKE-UP TABLE IN MASTER CABIN

M/Y JESMA II



MASTER BATHROOM

M/Y JESMA II



VIP CABIN

M/Y JESMA II



VIP CABIN

M/Y JESMA II



VIP CABIN

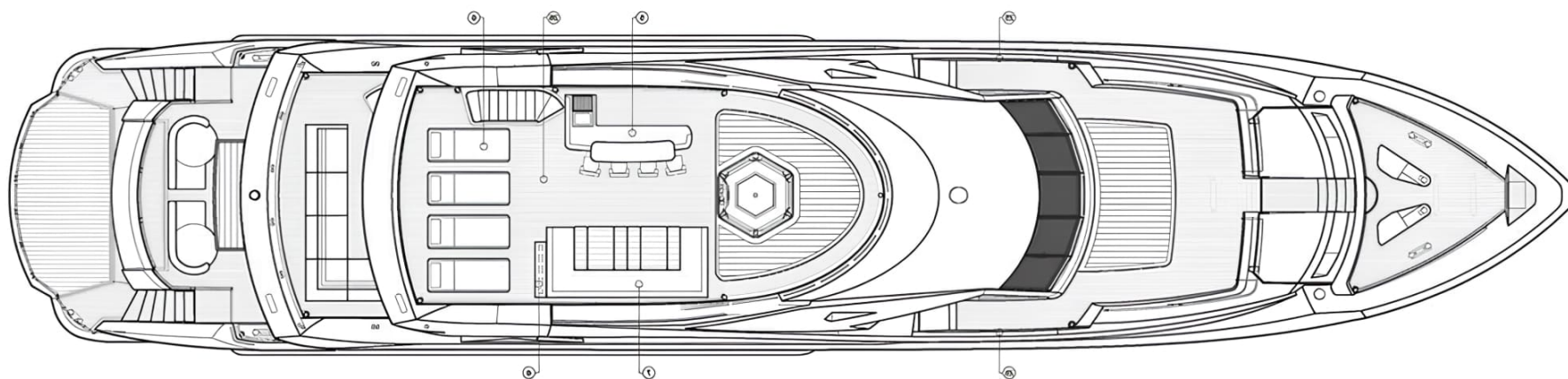
M/Y JESMA II



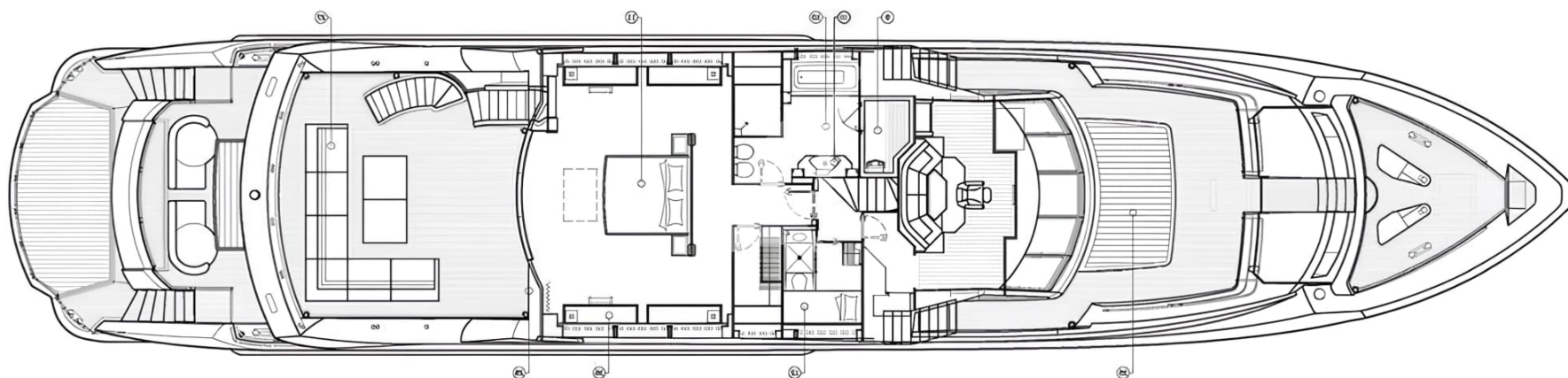
GUEST CABIN

M/Y JESMA II

General Arrangement



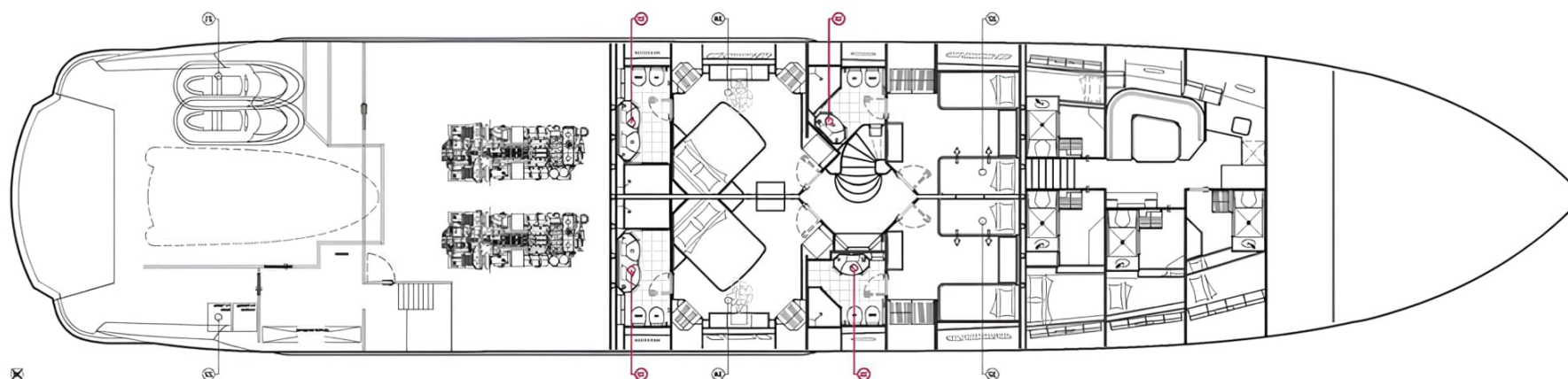
SUNDECK



UPPER DECK



MAIN DECK



LOWER DECK



KIRILL KUATOV

+377 607 93 15 20

+39 333 576 44 44

 [Send e-mail](#)

 WhatsApp

 Telegram